

CERASHIELD Swatches



CS-102 GRAPHITE BLACK



CS-112 COBALT



CS-124 SATIN NICKEL



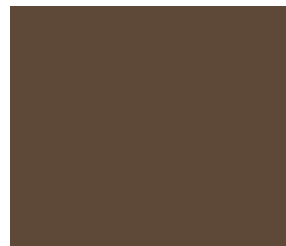
CS-129 STAINLESS



CS-138 JET BLACK



CS-143 STOPLIGHT RED



CS-148 BURNT BRONZE



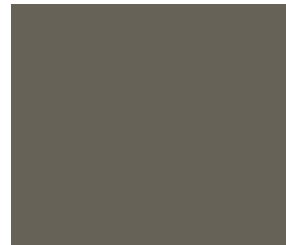
CS-158 BLUE FLAME



CS-163 LOLLYPOP PURPLE



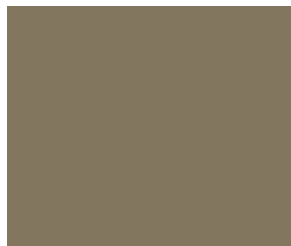
CS-186 PISTON COAT
(AIR CURE)



CS-187 TRANSFER GREY



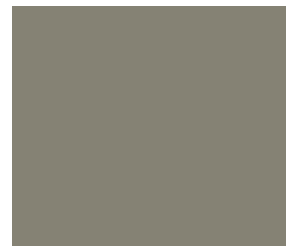
CS-190 20150 COYOTE



CS-211 DESERT SAND



CS-215 HIGHLAND GREEN



CS-219 GUN METAL GREY

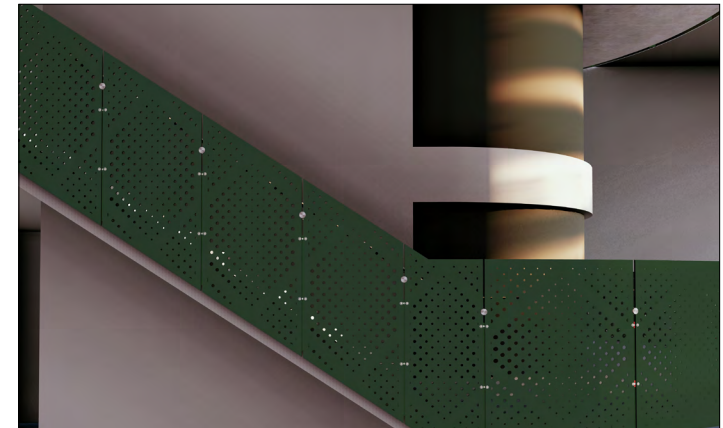


CS-226 PATRIOT BROWN

DISCLAIMER

*Please note that the digital swatches of our CERSASHIELD may not accurately represent the actual real-life samples. Factors such as monitor settings, lighting conditions, and individual perception can affect the colors you see on your screen. We suggest using the swatches as a general reference for color, shade, and hue, rather than expecting an exact match. For the most precise color selection, we recommend requesting physical samples or visiting our office in Lewisville, TX to evaluate the powder coat colors in person.

Please note that while we offer a diverse range of standard powder coat colors to complement our products, any selections outside of these standard options may incur additional costs. We encourage you to consult with our specialists to explore all available options and make the best decision for your project needs.



CS-215 HIGHLAND GREEN ON STRUC PANEL RAILING SYSTEM

Looking for a pop of color on your railing system?

Advanced Technology Backed by CERAKOTE

VIVA Railings leverages the advanced technology of CERAKOTE, a world-renowned coating technology celebrated for its superior durability, corrosion resistance, and aesthetic versatility. By integrating CERASHIELD's proven methods, VIVA Railings ensures that our coating delivers unmatched performance and aesthetic excellence. Visit Cerakote for more information.

Color and Application Versatility:

- Compatible with stainless steel, aluminum, and steel.
- Over 40 vibrant color options.
- Superior alternative to anodizing, which is limited in material compatibility and color range.

Color Consistency:

- Adheres to Delta E ≤ 1 standard for minimal perceptible color variance.
- Ideal for high-volume projects requiring uniform finishes.

Preservation of Aluminum Alloy Properties:

- Retains the fatigue properties of aluminum.
- Prevents brittleness and tensile residual stress associated with anodizing.

Eco-Friendly Solution:

- Free of heavy metals; compliant with VOC regulations nationwide.
- Meets REACH, ROHS, and Proposition 65 standards.
- Does not involve harmful substances like hexavalent chromium used in anodizing.

Professional Preference:

- Popular with architects and contractors for reliability, consistency, color options, and faster lead times.

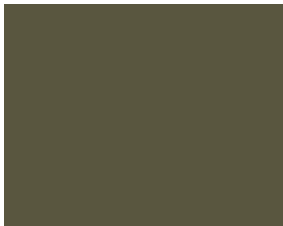
Shown here are the standard colors available.

As in all of our railing systems, customization is always a possibility. At VIVA Railings our priority is to provide products and services that match your vision.

CERASHIELD Swatches



CS-228 TACTICAL GREY



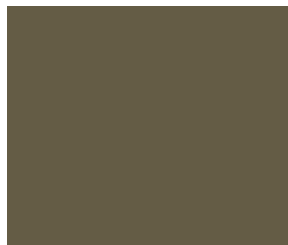
CS-231 MAGPUL
FOLIAGE GREEN



CS-232 MAGPUL O.D. GREEN



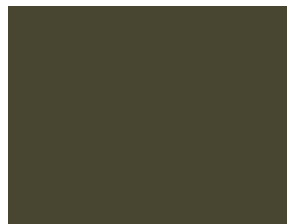
CS-239 SNIPER GREY



CS-240 COYOTE TAN



CS-241 O.D. GREEN



CS-244 MIL SPECS
O.D. GREEN



CS-267 MAGPUL FDE



CS-7300 BLACK VELVET



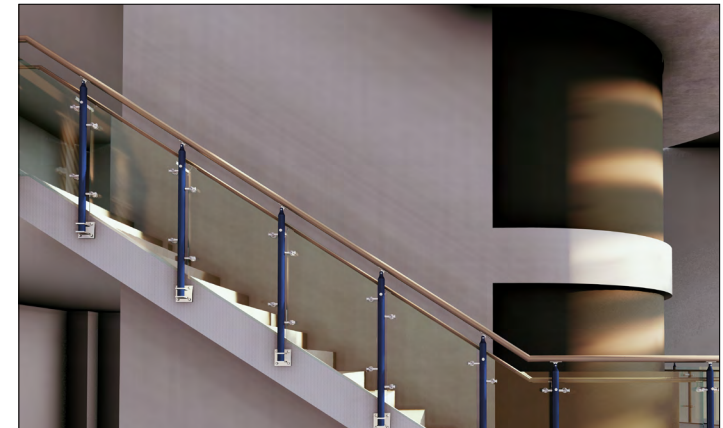
CS-7800 GLACIER GOLD



CS-7900 GLACIER TITANIUM



CS-30118 FS FIELD DRAB



CS-158 BLUE FLAME ON CIRCA GLASS RAILING SYSTEM

Looking for a pop of color on your railing system?

Advanced Technology Backed by CERAKOTE

VIVA Railings leverages the advanced technology of CERAKOTE, a world-renowned coating technology celebrated for its superior durability, corrosion resistance, and aesthetic versatility. By integrating CERASHIELD's proven methods, VIVA Railings ensures that our coating delivers unmatched performance and aesthetic excellence. Visit Cerakote for more information.

Color and Application Versatility:

- Compatible with stainless steel, aluminum, and steel.
- Over 40 vibrant color options.
- Superior alternative to anodizing, which is limited in material compatibility and color range.

Color Consistency:

- Adheres to Delta E ≤ 1 standard for minimal perceptible color variance.
- Ideal for high-volume projects requiring uniform finishes.

Preservation of Aluminum Alloy Properties:

- Retains the fatigue properties of aluminum.
- Prevents brittleness and tensile residual stress associated with anodizing.

Eco-Friendly Solution:

- Free of heavy metals; compliant with VOC regulations nationwide.
- Meets REACH, ROHS, and Proposition 65 standards.
- Does not involve harmful substances like hexavalent chromium used in anodizing.

Professional Preference:

- Popular with architects and contractors for reliability, consistency, color options, and faster lead times.

Shown here are the standard colors available.

As in all of our railing systems, customization is always a possibility. At VIVA Railings our priority is to provide products and services that match your vision.

DISCLAIMER

*Please note that the digital swatches of our CERSASHIELD may not accurately represent the actual real-life samples. Factors such as monitor settings, lighting conditions, and individual perception can affect the colors you see on your screen. We suggest using the swatches as a general reference for color, shade, and hue, rather than expecting an exact match. For the most precise color selection, we recommend requesting physical samples or visiting our office in Lewisville, TX to evaluate the powder coat colors in person.

Please note that while we offer a diverse range of standard powder coat colors to complement our products, any selections outside of these standard options may incur additional costs. We encourage you to consult with our specialists to explore all available options and make the best decision for your project needs.

PENCIL HARDNESS TEST	CERASHIELD	STANDARD POWDER COAT COLOR
Pencil Hardness Test – Used to determine the hardness of a coating by evaluating its resistance to scratching using pencils of varying hardness. The test involves pressing pencils with different hardness grades against the coating surface and observing the hardest pencil that does not leave a mark.	7H-9H	2H-6H

FLAKING TEST	CERASHIELD	STANDARD POWDER COAT COLOR
Maximum temperatures that a particular coating can withstand before it starts flaking.	800° F - 1200° F	500° F

MIL THICKNESS	CERASHIELD	STANDARD POWDER COAT COLOR
Thickness of the coating. Average powder-coating thickness is about 2mil to 6mil. CERASHIELD colors have met ASTM standards for Salt Spray tests, Impact Resistance test, Pencil Hardness tests, all with 1 mil thickness.	1 MIL	4 MIL

CORROSION TESTING
Corrosion tests have been performed as per ASTM B117 standards (salt spray chamber) where the product lasted for 2034 hours, exceeding the requirements of 1000 hours. CERASHIELD by CERAKOTE Corrosion Test Video