



FOLD - AVAILABLE INFILLS

Laser Cut Patterns

FOLDTM METAL PANEL RAILING SYSTEM

PRODUCT DATA



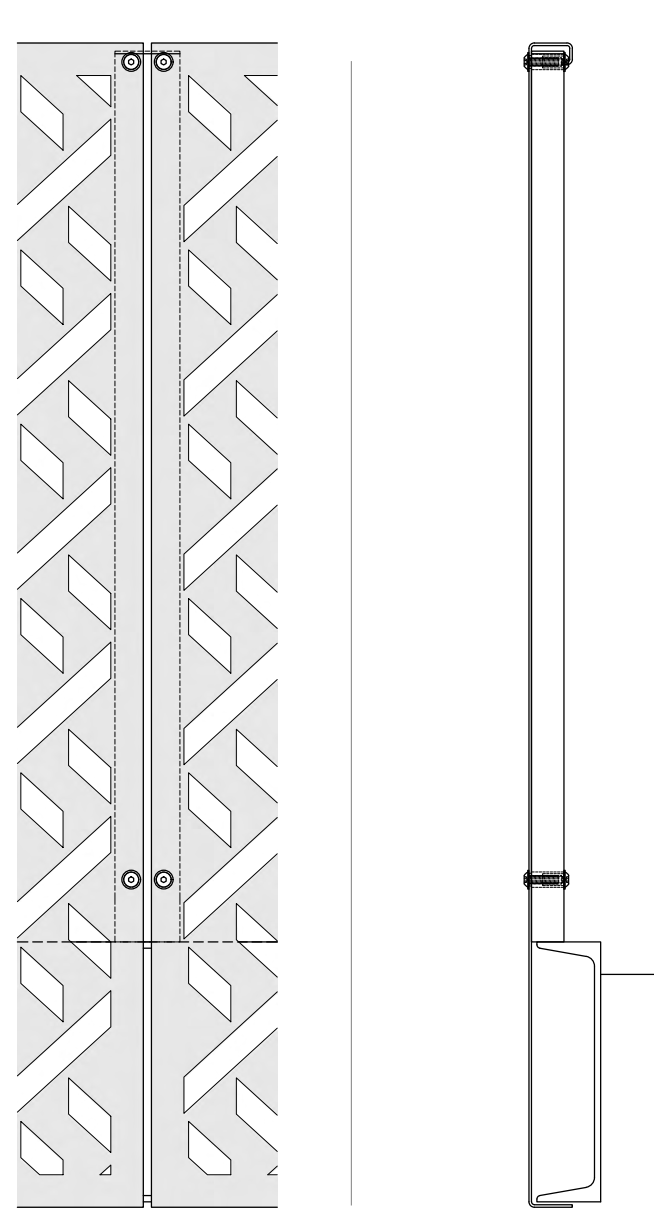
VIVA RAILINGS
LEADERS IN ARCHITECTURAL RAILING SYSTEMS

DESIGN + ENGINEER + FABRICATE + INSTALL



FOLDTM METAL PANEL RAILING SYSTEM

Our Fold Panel Railing System is an ingeniously engineered structural sheet metal fabrication design. This system features CNC laser cut patterns that provide a range of pre-configured or custom designs of your choice. With material choices of aluminum or steel in finishes of anodized or powder coating – what you can do with the FOLD panel system on your project is best left to your imagination.



FOLD - AVAILABLE INFILLS

Laser Cut Patterns

Other mounting options available.



FOLDTM METAL PANEL SYSTEM - TECHNICAL DATA

	MATERIAL	FINISH	SIZE/SPACING
POST	<div>Stainless Steel (201) / Aluminum (With Stainless Steel infill panel)</div> <div>Stainless Steel (304 or 316) (With Stainless Steel infill panel)</div>	<div>Powder Coat</div> <div>#6 Satin</div>	<div>Formed panels @ 4'-6" max. O.C.</div> <div>Fascia, Top or Core mount.</div>
INFILL OPTIONS	<div>Stainless Steel (304 or 316)</div> <div>Aluminum</div> <div>Steel</div>	<div>#6 Satin</div> <div>Powder Coat - Super Polyester (AAMA 2604) - \$ ¹</div> <div>Powder Coat - Super Polyester (AAMA 2604) - \$</div> <div>Powder Coat - PVDF (AAMA 2605) - \$\$</div> <div>Powder Coat</div>	<div>2" wide with 14GA thickness. 4'-0" max. O.C.</div>
HAND RAIL	<div>Stainless Steel Tube</div> <div>Stainless Steel Tube with LED ²</div> <div>Wood (Red Oak, Cherry or Maple) ³</div> <div>Wood (Red Oak, Cherry or Maple) with LED</div>	<div>#6 Satin, Powder Coat</div> <div>#6 Satin</div> <div>Unstained</div>	<div>Ø1-1/2" or Ø2" tube</div> <div>Ø1-1/2" with LED LINEAR, Ø1-1/2" or Ø2" with LED POD</div> <div>Ø2"</div> <div>Ø2" with LED LINEAR</div>

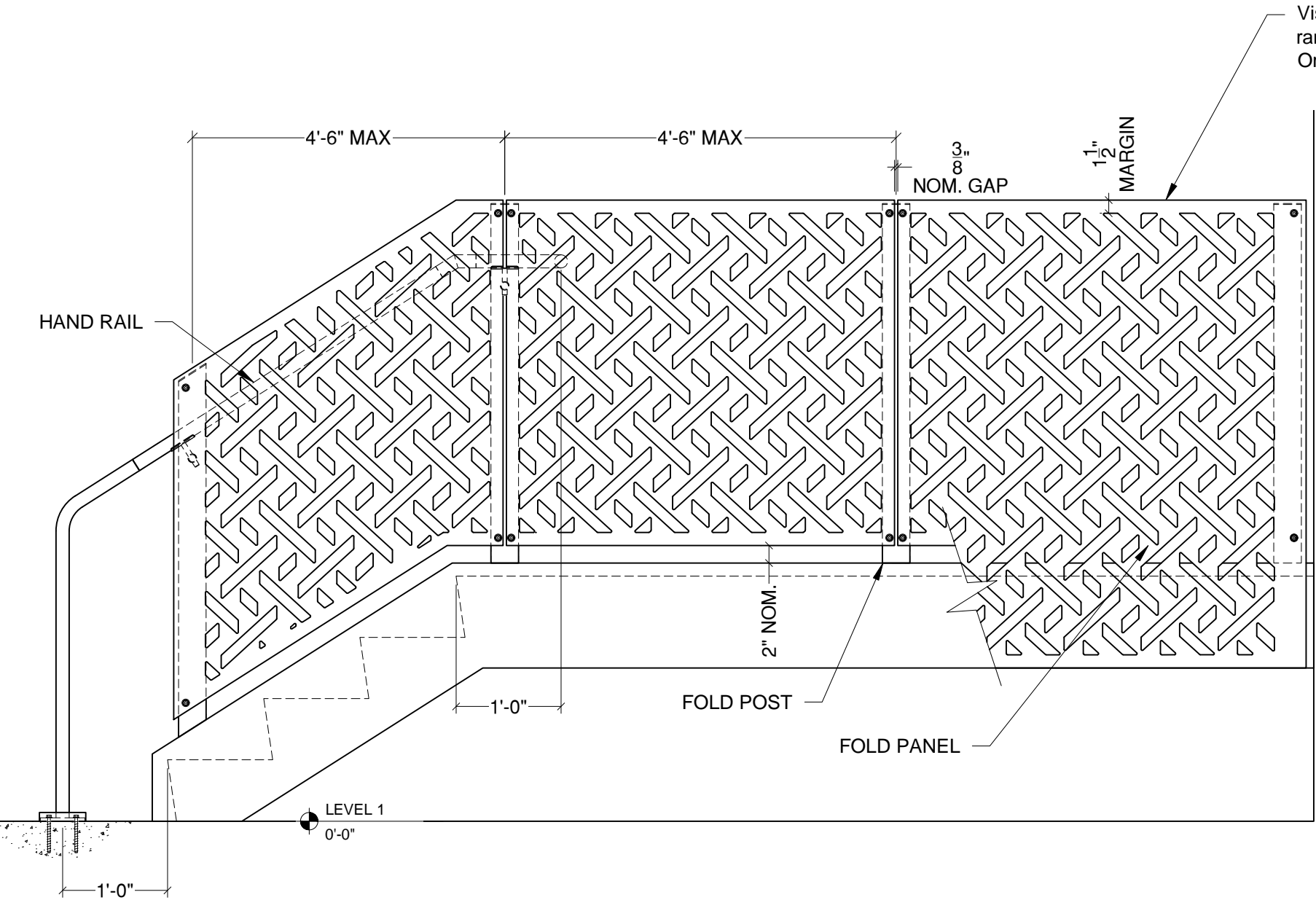


1. \$ to \$\$\$: Indicates finish type comparative cost.
2. All LED LINEAR products are ETL certified; ETL mark is proof of product compliance to North American safety standard.
3. Other species available upon request.

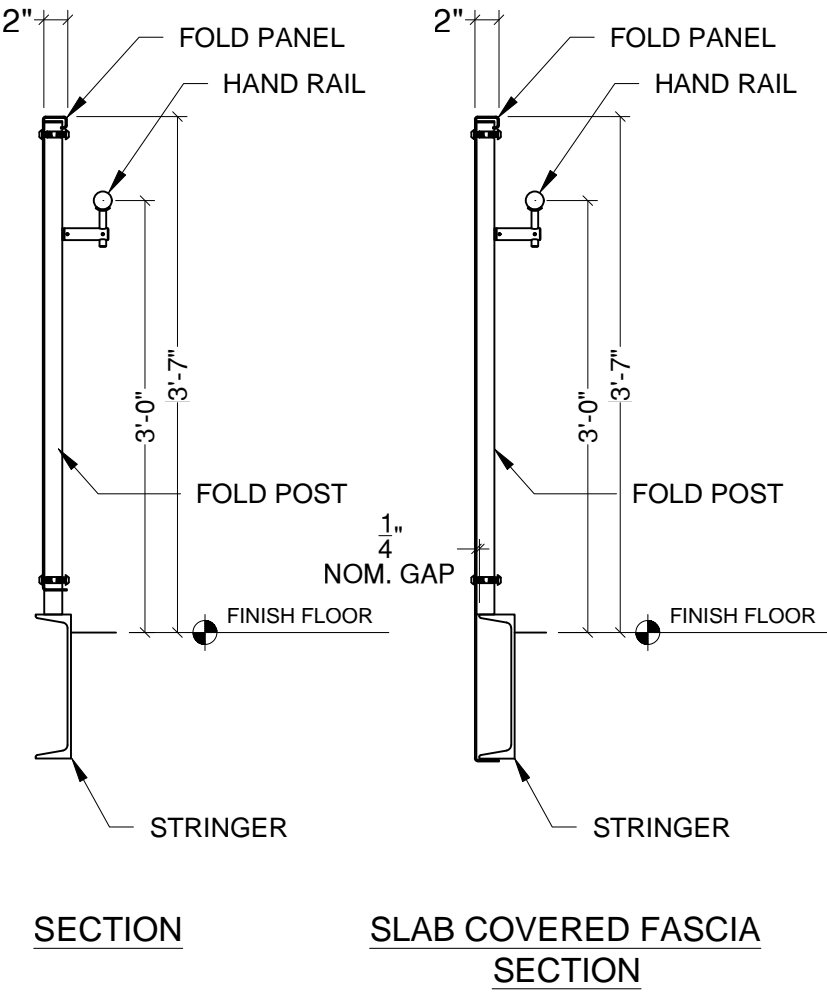


FOLD RAILING SYSTEM

METAL PANEL INFILL



Visit <https://vivarailings.com/> for range of design patterns
Or provide your custom pattern



VIVA RAILINGS IS NOT RESPONSIBLE FOR THE STRUCTURAL INTEGRITY OF ANY BUILDING SYSTEMS OR OTHER MATERIALS NOT FURNISHED BY VIVA RAILINGS. VIVA RAILINGS HAS NO WAY OF KNOWING AND SPECIFICALLY DISCLAIMS WHETHER OR NOT THE BUILDING SYSTEMS TO WHICH VIVA RAILINGS' PRODUCTS ARE TO BE ATTACHED ARE STRUCTURALLY SOUND OR DESIGNED TO PROPERLY SUPPORT VIVA RAILINGS'S MATERIALS. ANY SUCH DESIGN RESPONSIBILITY BELONGS TO OTHERS FOR WHOM VIVA RAILINGS IS NOT RESPONSIBLE. THESE DRAWINGS ARE INTENDED FOR THE SOLE USE OF VIVA RAILINGS' CUSTOMER AND THEIR AGENTS FOR THE INSTALLATION OF PRODUCTS FURNISHED BY VIVA RAILINGS. VIVA RAILINGS REMAINS THE SOLE OWNER OF ALL DESIGNS AND INTELLECTUAL PROPERTY CONTAINED WITHIN. REPRODUCTION AND USE OF THESE DESIGNS FOR ANY OTHER PURPOSE IS FORBIDDEN. SCALES ARE PROVIDED FOR REFERENCE ONLY. FOR PRODUCT INFORMATION AND TECHNICAL SUPPORT, PLEASE CONTACT VIVA RAILINGS.

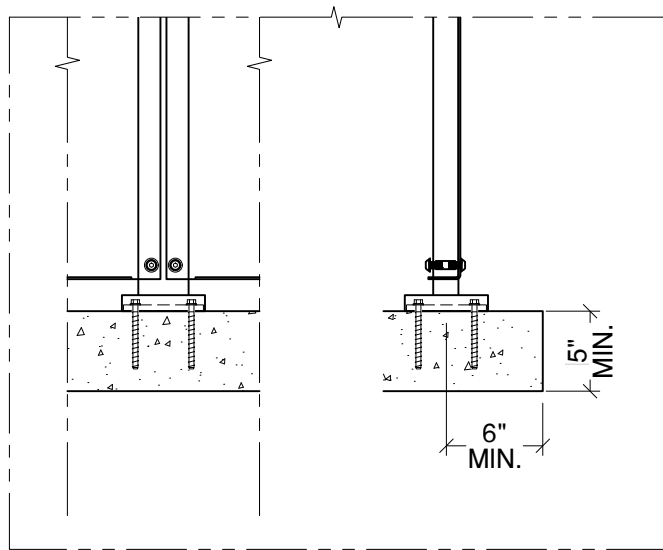


FOLD METAL PANEL RAILING SYSTEM



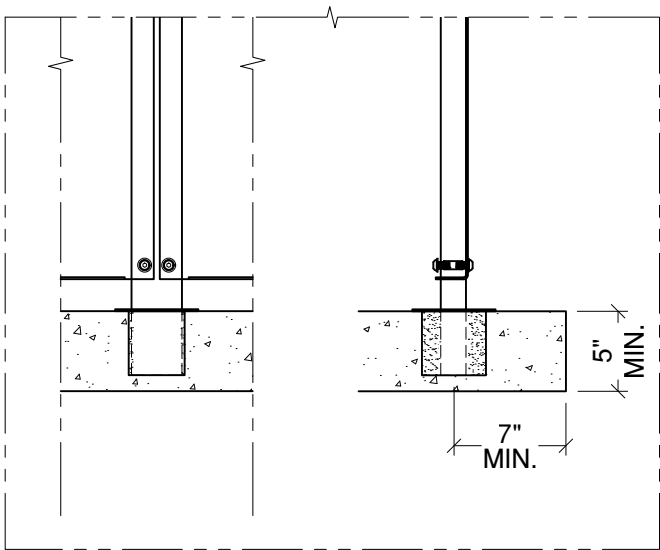
FOLD RAILING SYSTEM

MOUNTING CONDITION, TOP MOUNTED POST



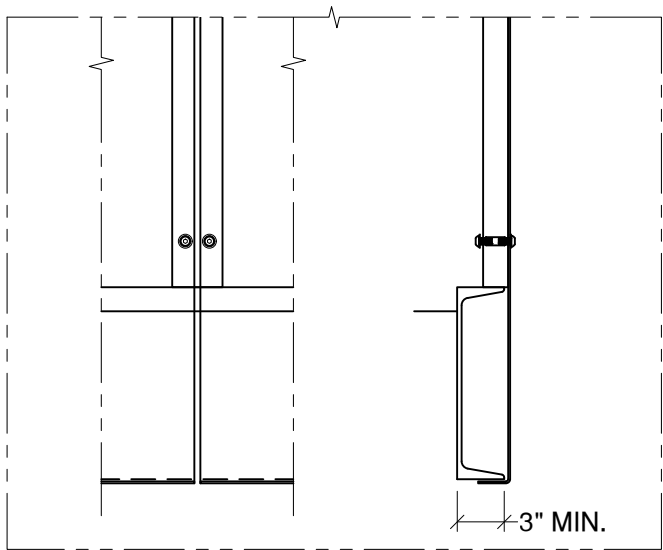
Anchored to Concrete ¹ - \$ ²

Detail# FO-T01



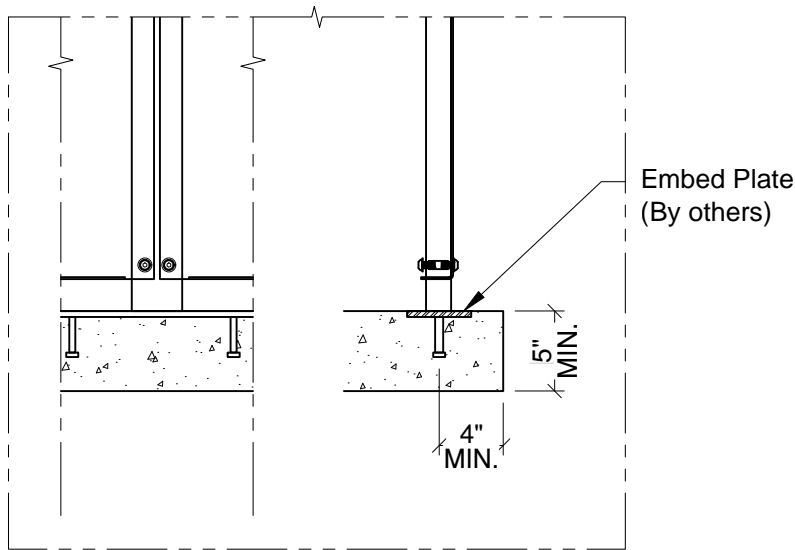
Cored into Concrete - \$\$

Detail# FO-T02



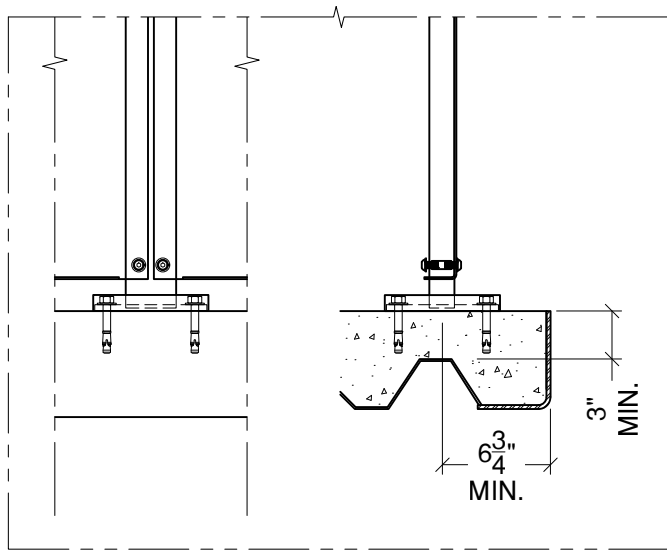
Welded @ Steel Channel - \$

Detail# FO-T03



Welded @ Embed Plate - \$

Detail# FO-T04



Anchored to Concrete Slab on Deck - \$\$

Detail# FO-T05

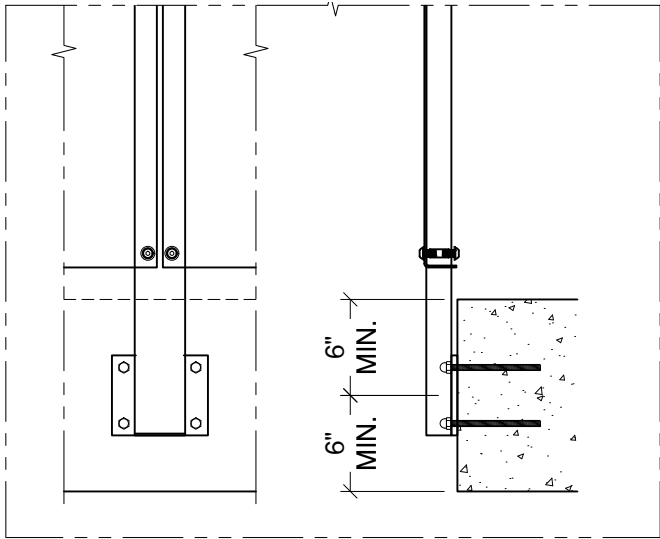
(1) Min. 4000 PSI concrete, Typ.
(2) \$ to \$\$\$: Indicates mounting type comparative cost

VIVA RAILINGS IS NOT RESPONSIBLE FOR THE STRUCTURAL INTEGRITY OF ANY BUILDING SYSTEMS OR OTHER MATERIALS NOT FURNISHED BY VIVA RAILINGS. VIVA RAILINGS HAS NO WAY OF KNOWING AND SPECIFICALLY DISCLAIMS WHETHER OR NOT THE BUILDING SYSTEMS TO WHICH VIVA RAILINGS' PRODUCTS ARE TO BE ATTACHED ARE STRUCTURALLY SOUND OR DESIGNED TO PROPERLY SUPPORT VIVA RAILINGS'S MATERIALS. ANY SUCH DESIGN RESPONSIBILITY BELONGS TO OTHERS FOR WHOM VIVA RAILINGS IS NOT RESPONSIBLE. THESE DRAWINGS ARE INTENDED FOR THE SOLE USE OF VIVA RAILINGS' CUSTOMER AND THEIR AGENTS FOR THE INSTALLATION OF PRODUCTS FURNISHED BY VIVA RAILINGS. VIVA RAILINGS REMAINS THE SOLE OWNER OF ALL DESIGNS AND INTELLECTUAL PROPERTY CONTAINED WITHIN. REPRODUCTION AND USE OF THESE DESIGNS FOR ANY OTHER PURPOSE IS FORBIDDEN. SCALES ARE PROVIDED FOR REFERENCE ONLY. FOR PRODUCT INFORMATION AND TECHNICAL SUPPORT, PLEASE CONTACT VIVA RAILINGS.



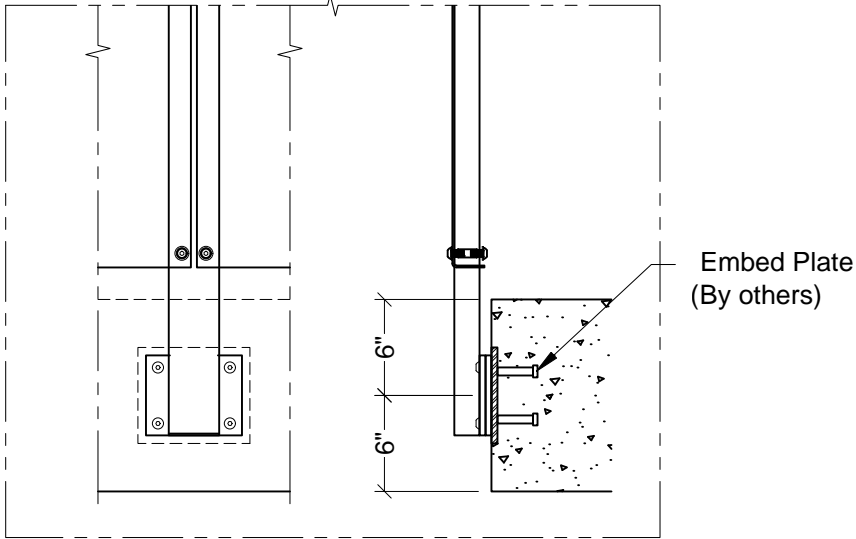
FOLD RAILING SYSTEM

MOUNTING CONDITION, FASCIA MOUNTED POST



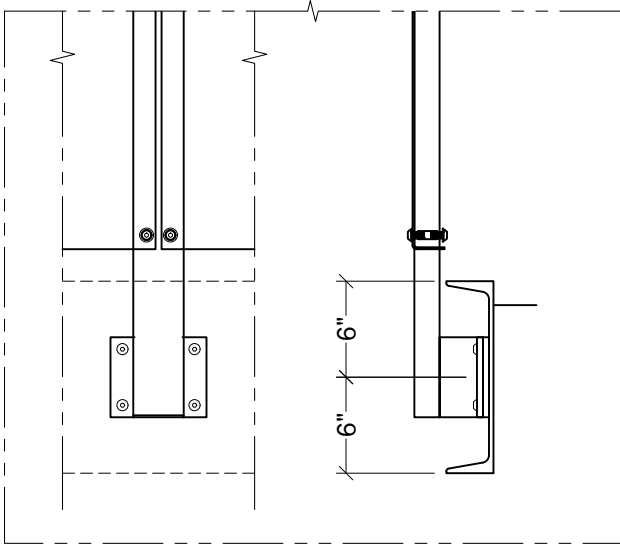
Anchored to Concrete ¹ - \$\$\$

Detail# FO-F01



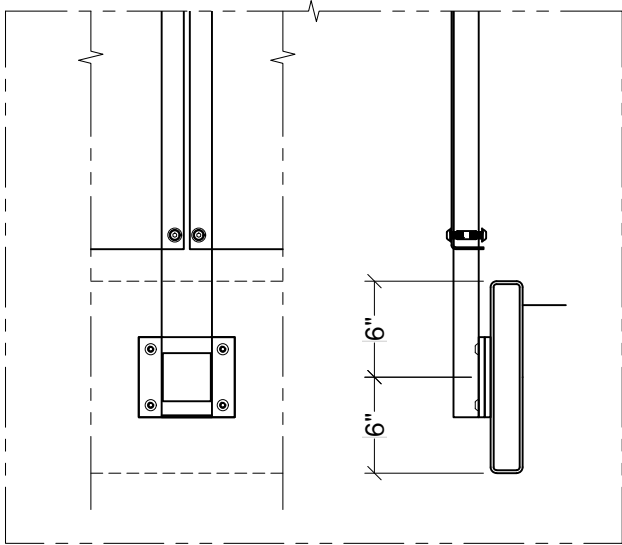
Welded @ Embed Plate - \$\$

Detail# FO-F02



Welded @ Steel Channel - \$\$

Detail# FO-F03



Welded @ Steel Tube - \$\$

Detail# FO-F04

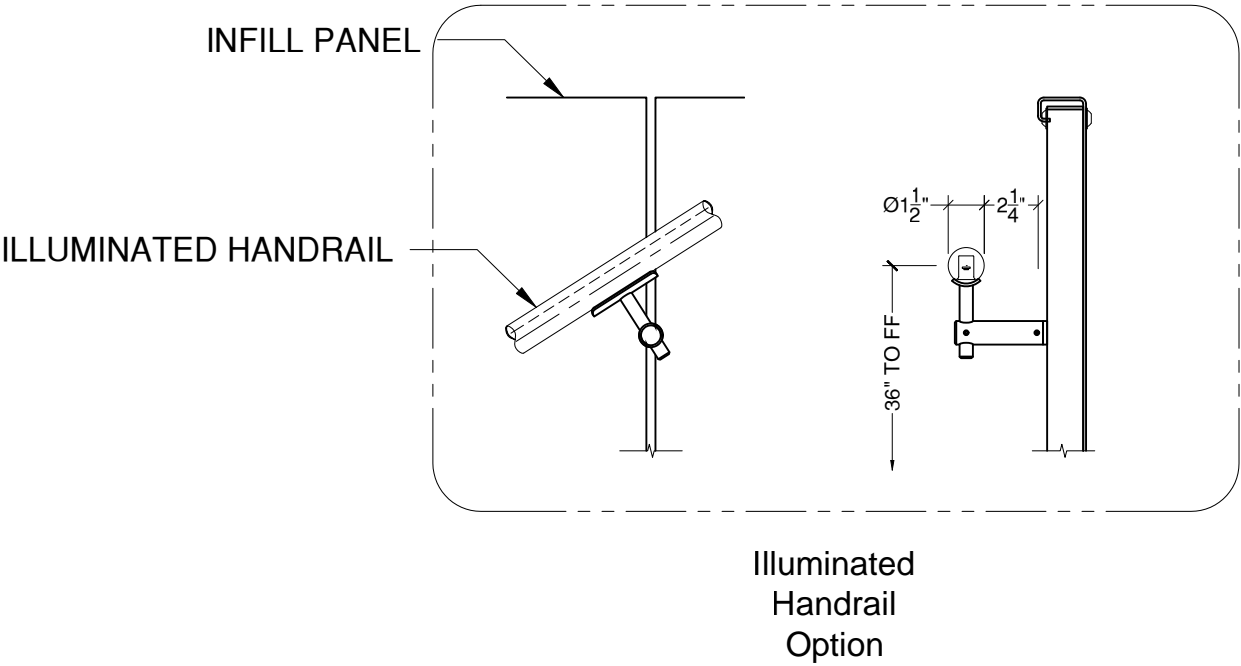
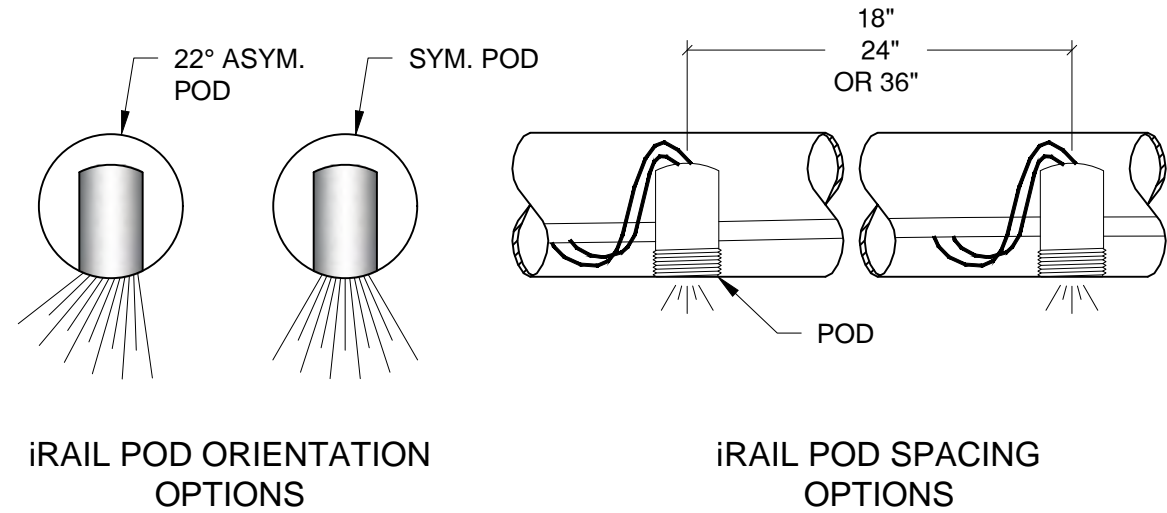
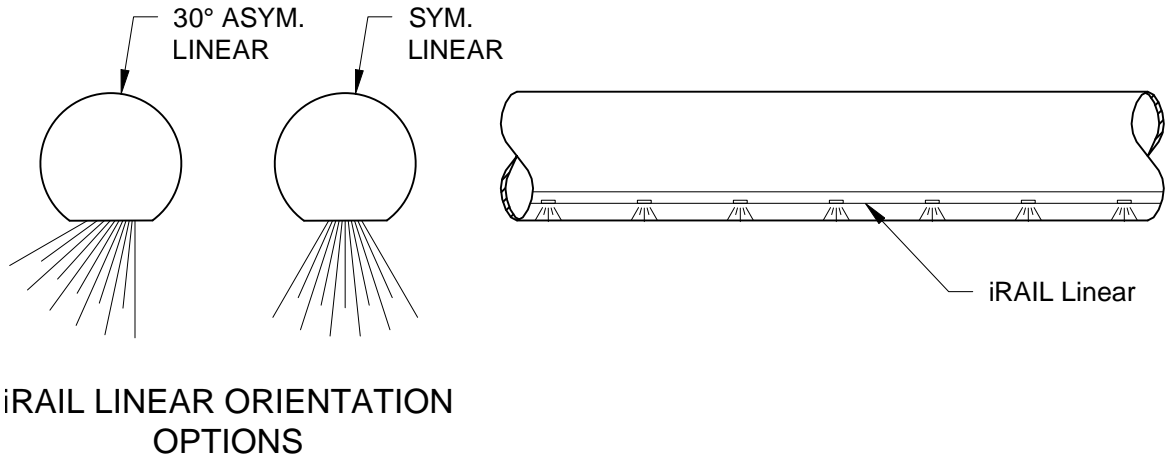
(1) Min. 4000 PSI concrete, Typ.

VIVA RAILINGS IS NOT RESPONSIBLE FOR THE STRUCTURAL INTEGRITY OF ANY BUILDING SYSTEMS OR OTHER MATERIALS NOT FURNISHED BY VIVA RAILINGS. VIVA RAILINGS HAS NO WAY OF KNOWING AND SPECIFICALLY DISCLAIMS WHETHER OR NOT THE BUILDING SYSTEMS TO WHICH VIVA RAILINGS' PRODUCTS ARE TO BE ATTACHED ARE STRUCTURALLY SOUND OR DESIGNED TO PROPERLY SUPPORT VIVA RAILINGS'S MATERIALS. ANY SUCH DESIGN RESPONSIBILITY BELONGS TO OTHERS FOR WHOM VIVA RAILINGS IS NOT RESPONSIBLE. THESE DRAWINGS ARE INTENDED FOR THE SOLE USE OF VIVA RAILINGS' CUSTOMER AND THEIR AGENTS FOR THE INSTALLATION OF PRODUCTS FURNISHED BY VIVA RAILINGS. VIVA RAILINGS REMAINS THE SOLE OWNER OF ALL DESIGNS AND INTELLECTUAL PROPERTY CONTAINED WITHIN. REPRODUCTION AND USE OF THESE DESIGNS FOR ANY OTHER PURPOSE IS FORBIDDEN. SCALES ARE PROVIDED FOR REFERENCE ONLY. FOR PRODUCT INFORMATION AND TECHNICAL SUPPORT, PLEASE CONTACT VIVA RAILINGS.



FOLD RAILING SYSTEM

ILLUMINATED RAILING



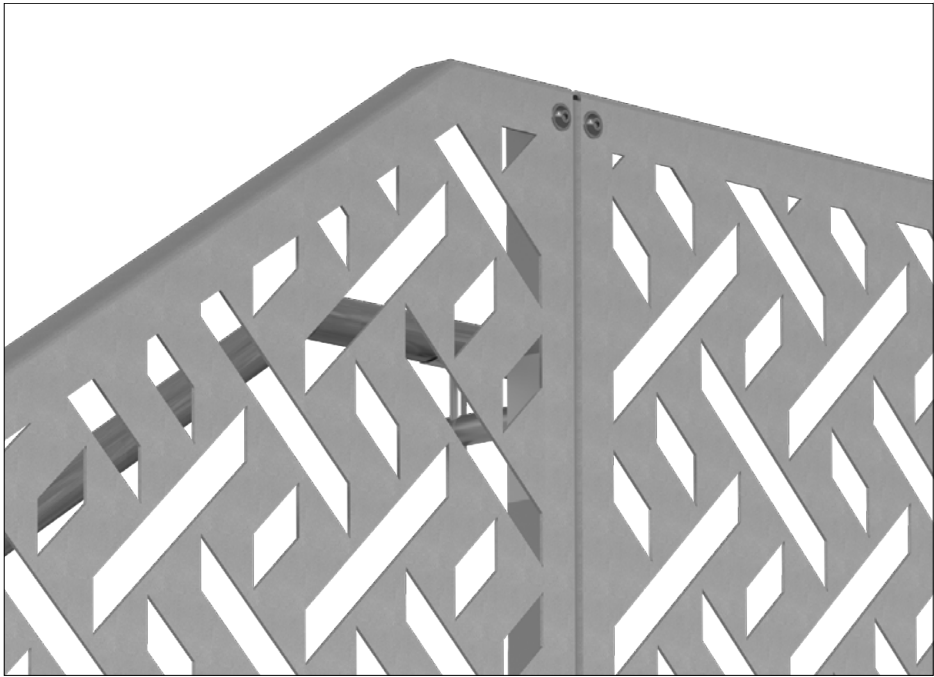
iRAIL LIGHTED RAILING SYSTEM



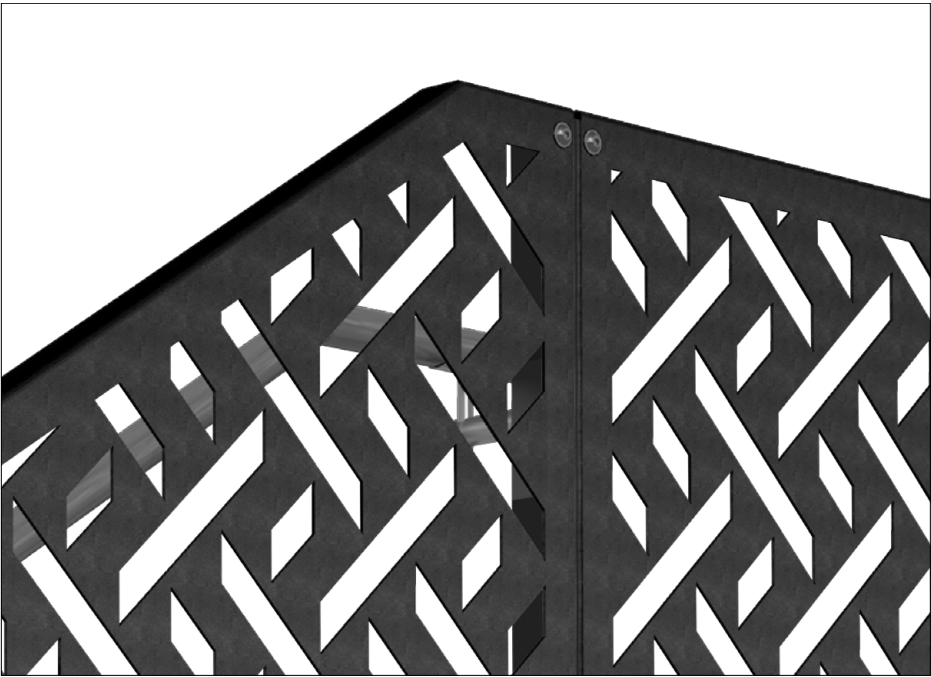
FOLD METAL PANEL RAILING SYSTEM

FINISHING OPTIONS

#6 Satin



Powder Coat*



Powder coating is an environmentally-friendly option because it doesn't rely on solvents or chemical carriers. Instead, an electrostatic charge holds the paint to the steel, thus eliminating VOC emissions which will help in regards to LEED requirements. In addition, it meets AAMA specifications. Powder coating is durable and scratch resistant so it weathers and retains its original hue better than conventional liquid coatings.*

Cerashield* Ceramic Coating



Enhanced durability and superior protection.
Available in a wide range of colors.
(Replaces traditional powder coat finish options.)

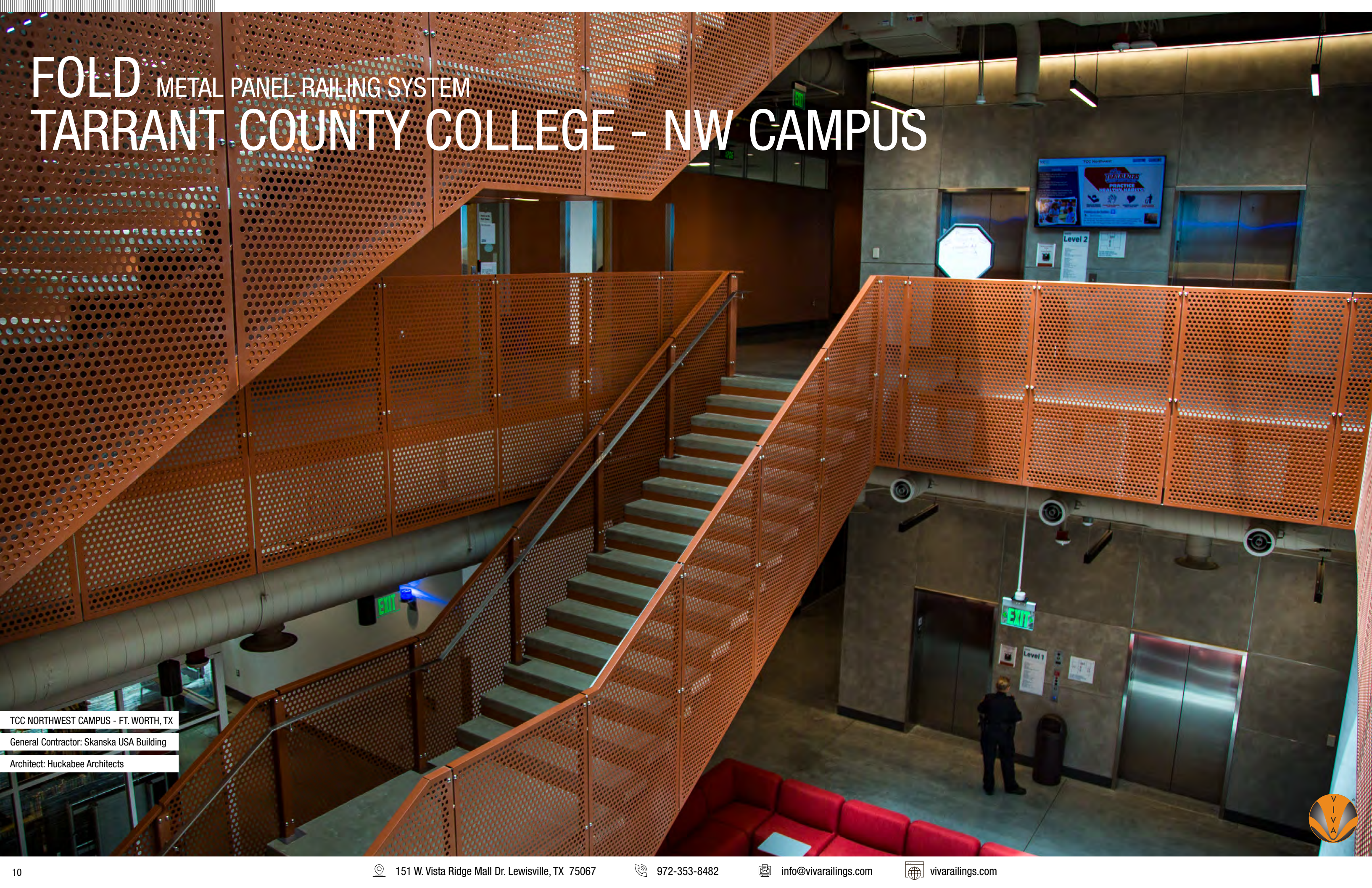
*VIVA Railings now proudly offers CeraShield Ceramic Coating (powered by CERAKOTE Technology) as our premium finishing option, providing enhanced durability and superior protection for interior and exterior applications. While CeraShield offers unparalleled advantages in hardness, corrosion resistance, UV stability, and chemical resistance, we will continue to offer standard Powder Coat finishes to meet a variety of aesthetic preferences.

The digital swatches of our powder coat colors may not accurately represent the actual real-life samples. Factors such as monitor settings, lighting conditions, and individual perception can affect the colors you see on your screen. We suggest using the swatches as a general reference for color, shade, and hue, rather than expecting an exact match. For the most precise color selection, we recommend requesting physical samples or visiting our office in Lewisville, TX to evaluate the powder coat colors in person.

Please note that while we offer a diverse range of standard powder coat colors to complement our products, any selections outside of these standard options may incur additional costs. We encourage you to consult with our specialists to explore all available options and make the best decision for your project needs.



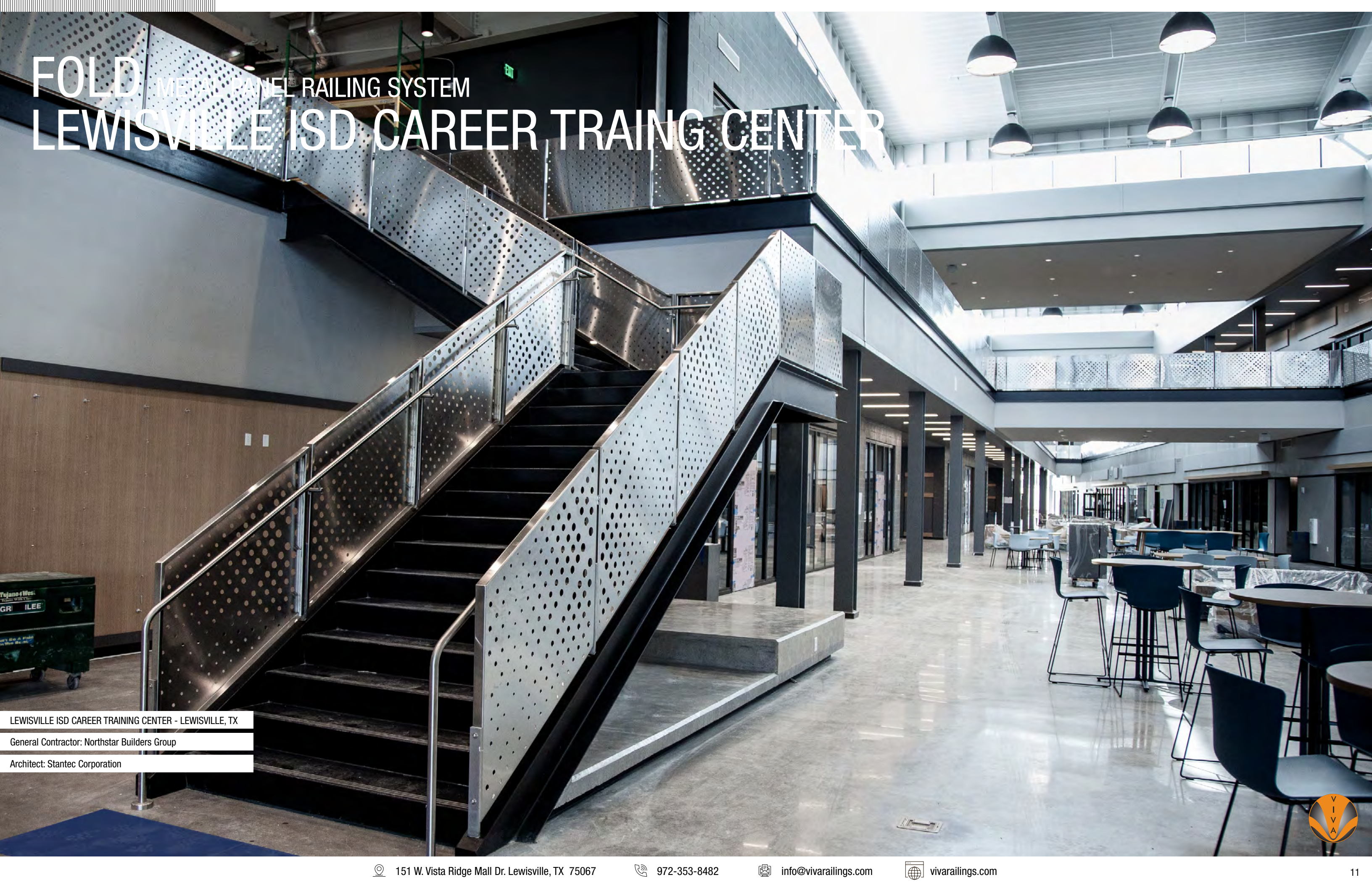
FOLD METAL PANEL RAILING SYSTEM TARRANT COUNTY COLLEGE - NW CAMPUS



TCC NORTHWEST CAMPUS - FT. WORTH, TX
General Contractor: Skanska USA Building
Architect: Huckabee Architects



FOLD METAL PANEL RAILING SYSTEM LEWISVILLE ISD CAREER TRAINING CENTER



LEWISVILLE ISD CAREER TRAINING CENTER - LEWISVILLE, TX
General Contractor: Northstar Builders Group
Architect: Stantec Corporation





DESIGN + ENGINEER + FABRICATE + INSTALL

151 W. Vista Ridge Mall Dr. Lewisville, TX 75067

(Dallas/Fort Worth Metroplex)

PH: 972.353.8482 | info@vivarailings.com
vivarailings.com



Inc. Magazine 500 | 5000
VIVA RAILINGS, LLC.
Among The Fastest Growing
US Companies
Eight Years in a Row
2012-2019



Inc. Magazine 500 | 5000
VIVA RAILINGS, LLC.
Among The Fastest Growing
Texas Companies
#211



ICC-ES 4405 Certified
SHOE™
Structural Glass Railing System



LEED
Material & Resources Credits 4.1 and 4.2



The American Institute of Architects



The California Contractors State License
Board Certified