



GATES - AVAILABLE INFILLS

- Glass
- Perforated Metal
- Wire Mesh

GATES PRODUCT DATA



DESIGN + ENGINEER + FABRICATE + INSTALL

GATES GLASS & METAL SYSTEM

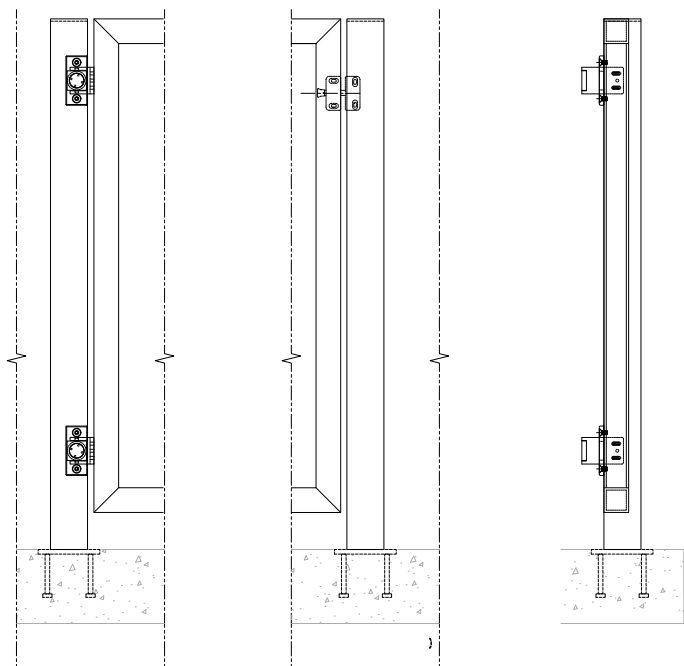
GATES - AVAILABLE INFILLS

Glass

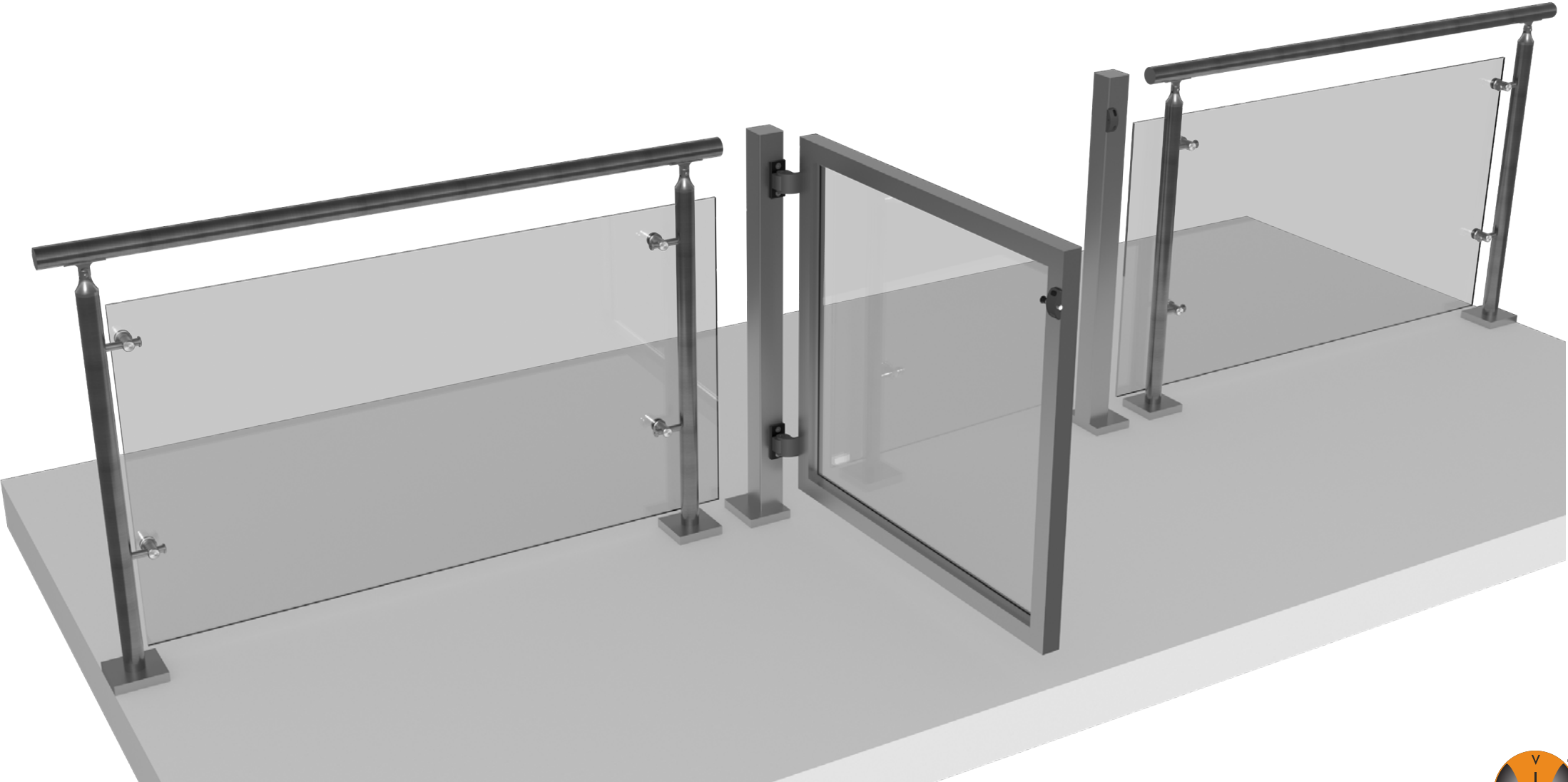
Perf Metal

Wire Mesh

Gates Glass & Metal Systems: a versatile and stylish add-on designed to seamlessly integrate with any of our existing railing systems. Enhances the functionality and security of our railing solutions without compromising on the aesthetic appeal.



Other mounting options available.



GATES

GLASS & METAL SYSTEM - TECHNICAL DATA

	MATERIAL	FINISH	SIZE/SPACING
POST	Stainless Steel (304 or 316)	#6 Satin	3"x3" @ 3"-10" max. O.C.Top or Core mount.
	Stainless Steel (201)	Powder Coat	
INFILL	Glass	Clear, Tinted or Frit	Standard thickness:1/2" laminated glass with PVB or SGP interlayer ¹ Interlayer standard thickness, SGP: 0.035" , 0.06" PVB: 0.035"
	Perforated Metal	#6 Satin	2" wide frame
	Wire Mesh		

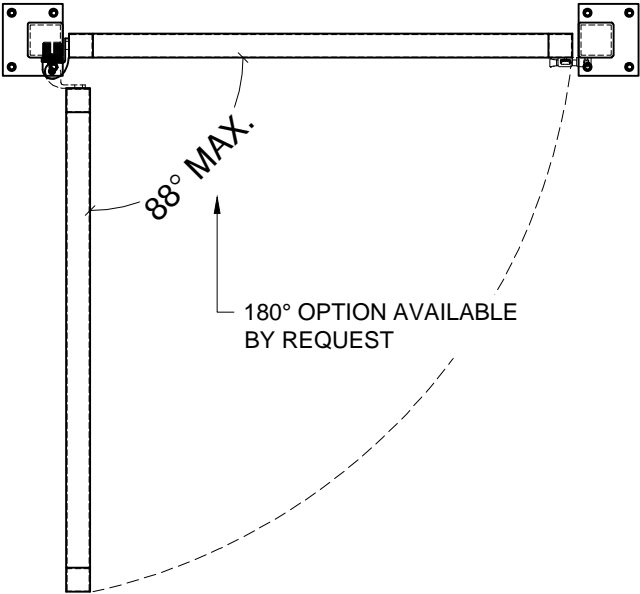


1. IBC 2015 & newer requires railing glass to be laminated. VIVA recommends SGP for exterior applications.

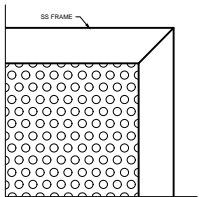


GATES GLASS & METAL SYSTEM

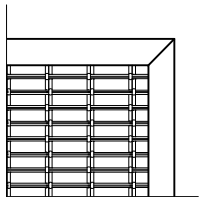
STAINLESS STEEL FRAME GATES



GLASS INFILL

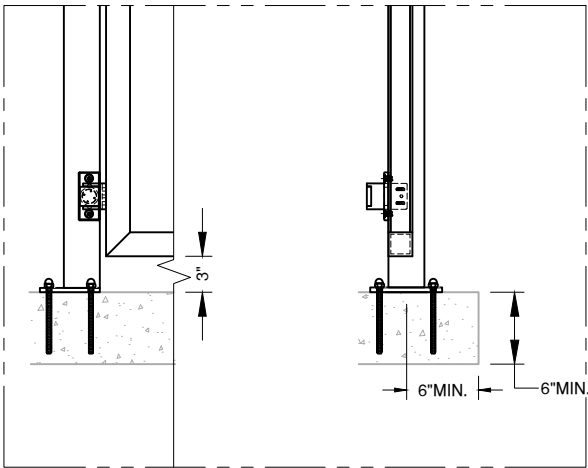
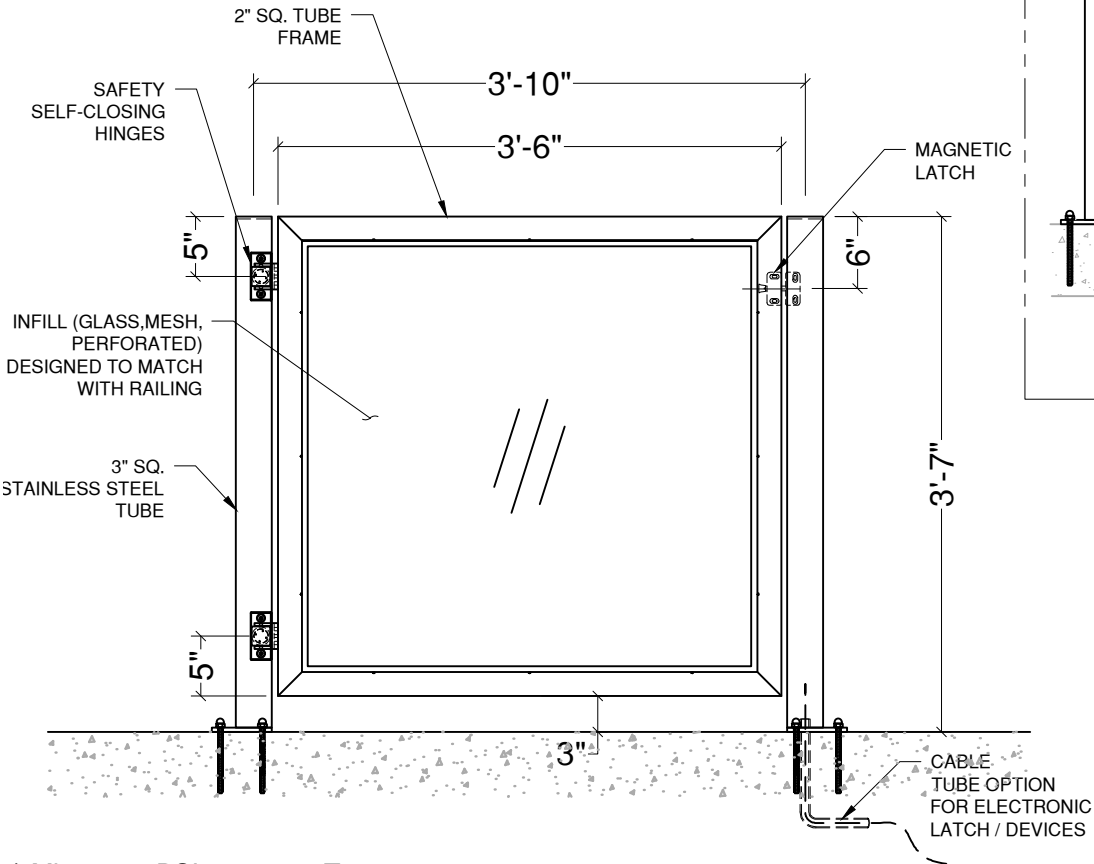


PERFORATED
INFILL

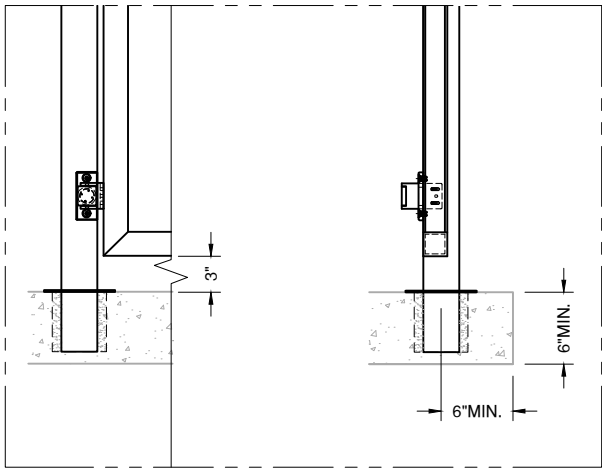


WIREMESH
INFILL

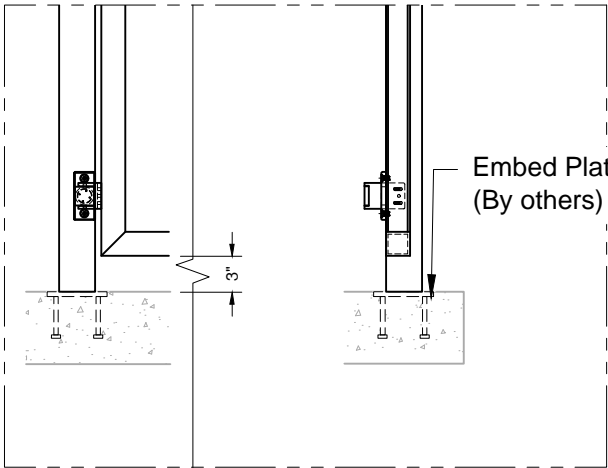
Visit <https://vivarailings.com/> for range of infill options.



Anchored to Concrete ¹ - \$ ²
Detail# GA-T01 ³



Cored into Concrete - \$\$
Detail# GA-T02



Welded @ Embed Plate - \$
Detail# GA-T04

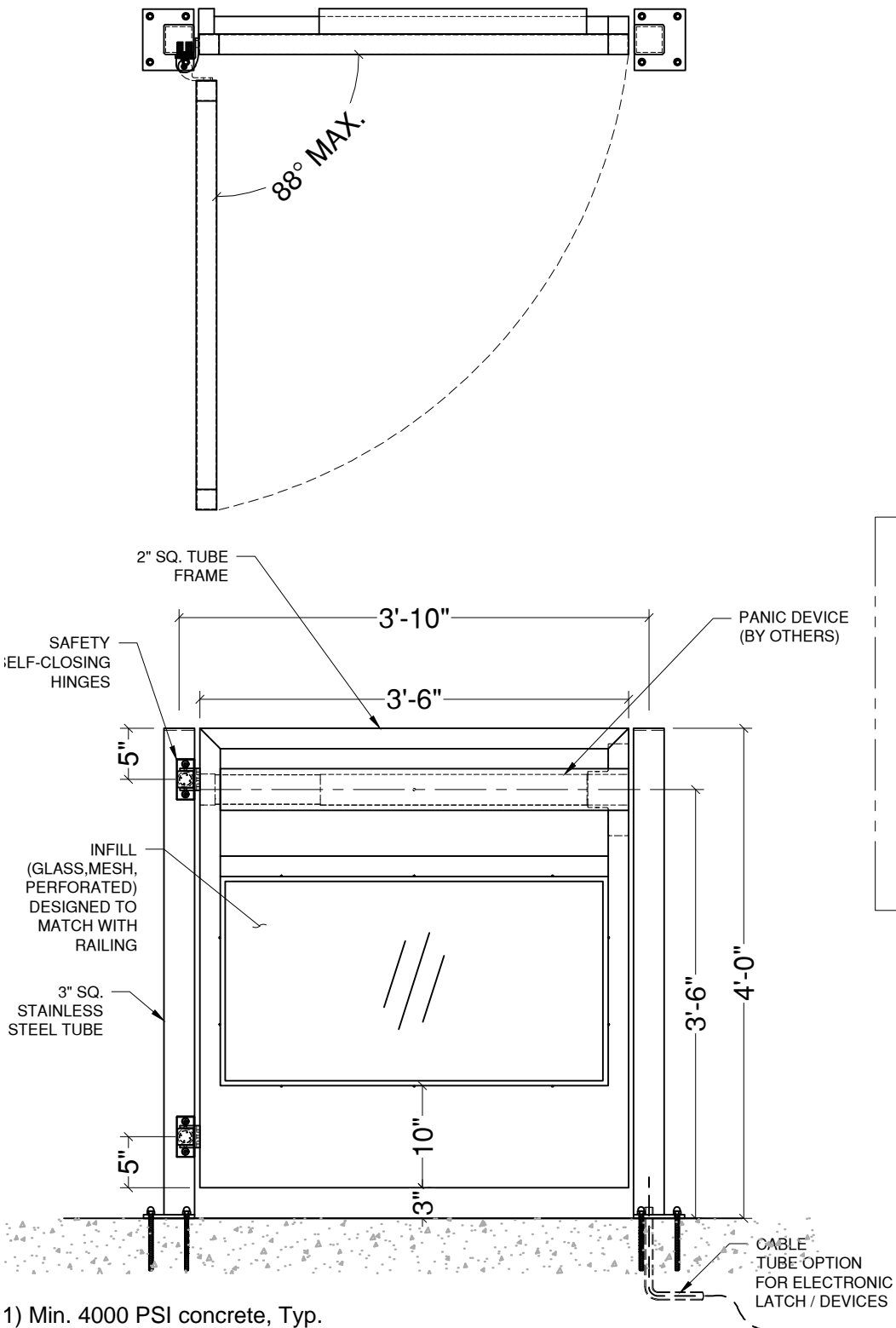
1) Min. 4000 PSI concrete, Typ.
2) \$ to \$\$\$: Indicates mounting type comparative cost

VIVA RAILINGS IS NOT RESPONSIBLE FOR THE STRUCTURAL INTEGRITY OF ANY BUILDING SYSTEMS OR OTHER MATERIALS NOT FURNISHED BY VIVA RAILINGS. VIVA RAILINGS HAS NO WAY OF KNOWING AND SPECIFICALLY DISCLAIMS WHETHER OR NOT THE BUILDING SYSTEMS TO WHICH VIVA RAILINGS' PRODUCTS ARE TO BE ATTACHED ARE STRUCTURALLY SOUND OR DESIGNED TO PROPERLY SUPPORT VIVA RAILINGS'S MATERIALS. ANY SUCH DESIGN RESPONSIBILITY BELONGS TO OTHERS FOR WHOM VIVA RAILINGS IS NOT RESPONSIBLE. THESE DRAWINGS ARE INTENDED FOR THE SOLE USE OF VIVA RAILINGS' CUSTOMER AND THEIR AGENTS FOR THE INSTALLATION OF PRODUCTS FURNISHED BY VIVA RAILINGS. VIVA RAILINGS REMAINS THE SOLE OWNER OF ALL DESIGNS AND INTELLECTUAL PROPERTY CONTAINED WITHIN. REPRODUCTION AND USE OF THESE DESIGNS FOR ANY OTHER PURPOSE IS FORBIDDEN. SCALES ARE PROVIDED FOR REFERENCE ONLY. FOR PRODUCT INFORMATION AND TECHNICAL SUPPORT, PLEASE CONTACT VIVA RAILINGS.



GATES GLASS & METAL SYSTEM

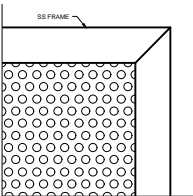
STAINLESS STEEL FRAME GATE FOR POOLS



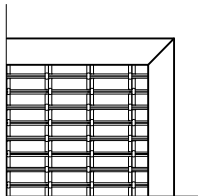
- 1) Min. 4000 PSI concrete, Typ.
- 2) \$ to \$\$\$: Indicates mounting type comparative cost



GLASS INFILL

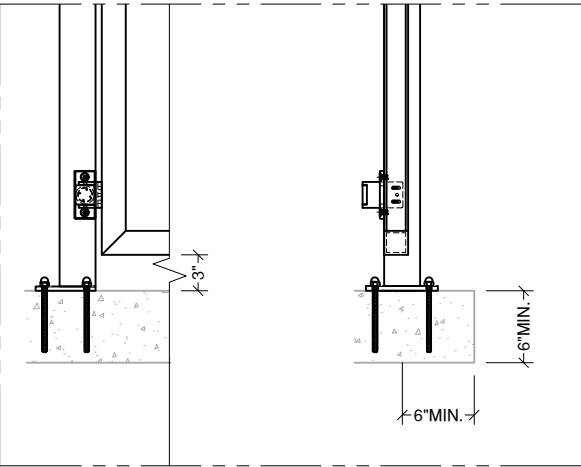


PERFORATED
INFILL

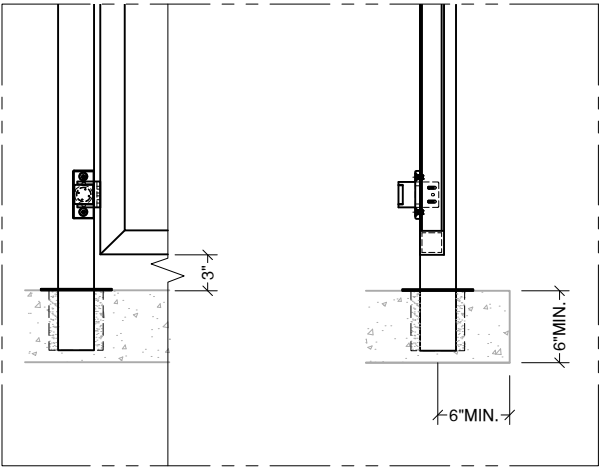


WIREMESH
INFILL

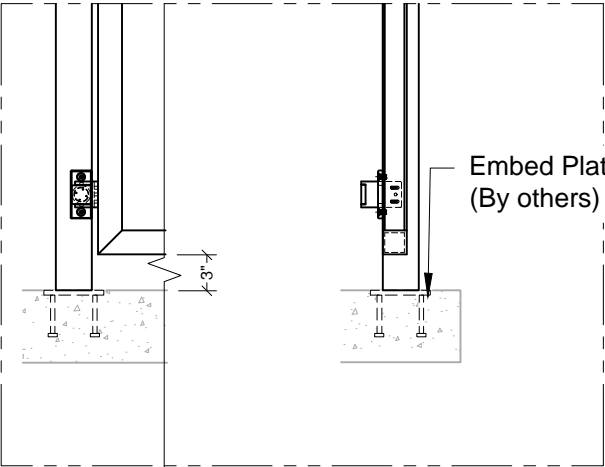
Visit <https://vivarailings.com/> for range of infill options.



Anchored to Concrete ¹ - \$ ²
Detail# GA-T01 ³



Cored into Concrete - \$\$
Detail# GA-T02



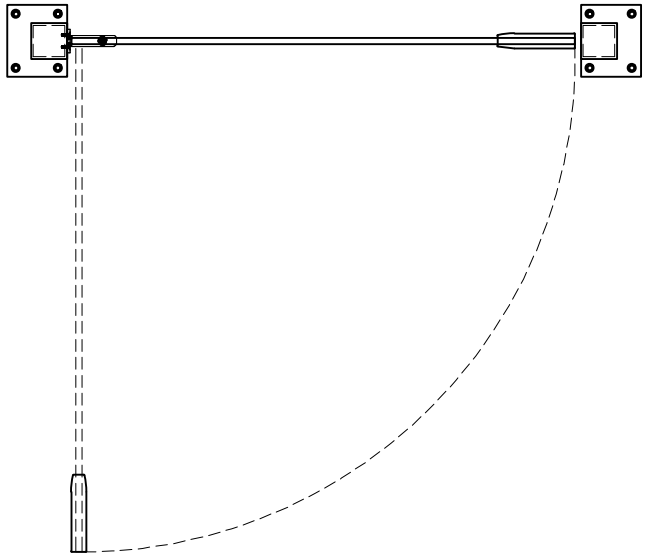
Welded @ Embed Plate - \$
Detail# GA-T04

VIVA RAILINGS IS NOT RESPONSIBLE FOR THE STRUCTURAL INTEGRITY OF ANY BUILDING SYSTEMS OR OTHER MATERIALS NOT FURNISHED BY VIVA RAILINGS. VIVA RAILINGS HAS NO WAY OF KNOWING AND SPECIFICALLY DISCLAIMS WHETHER OR NOT THE BUILDING SYSTEMS TO WHICH VIVA RAILINGS' PRODUCTS ARE TO BE ATTACHED ARE STRUCTURALLY SOUND OR DESIGNED TO PROPERLY SUPPORT VIVA RAILINGS'S MATERIALS. ANY SUCH DESIGN RESPONSIBILITY BELONGS TO OTHERS FOR WHOM VIVA RAILINGS IS NOT RESPONSIBLE. THESE DRAWINGS ARE INTENDED FOR THE SOLE USE OF VIVA RAILINGS' CUSTOMER AND THEIR AGENTS FOR THE INSTALLATION OF PRODUCTS FURNISHED BY VIVA RAILINGS. VIVA RAILINGS REMAINS THE SOLE OWNER OF ALL DESIGNS AND INTELLECTUAL PROPERTY CONTAINED WITHIN. REPRODUCTION AND USE OF THESE DESIGNS FOR ANY OTHER PURPOSE IS FORBIDDEN. SCALES ARE PROVIDED FOR REFERENCE ONLY. FOR PRODUCT INFORMATION AND TECHNICAL SUPPORT, PLEASE CONTACT VIVA RAILINGS.

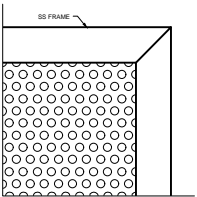


GATES GLASS & METAL SYSTEM

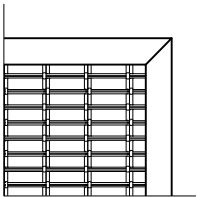
FULL GLASS GATE



GLASS INFILL

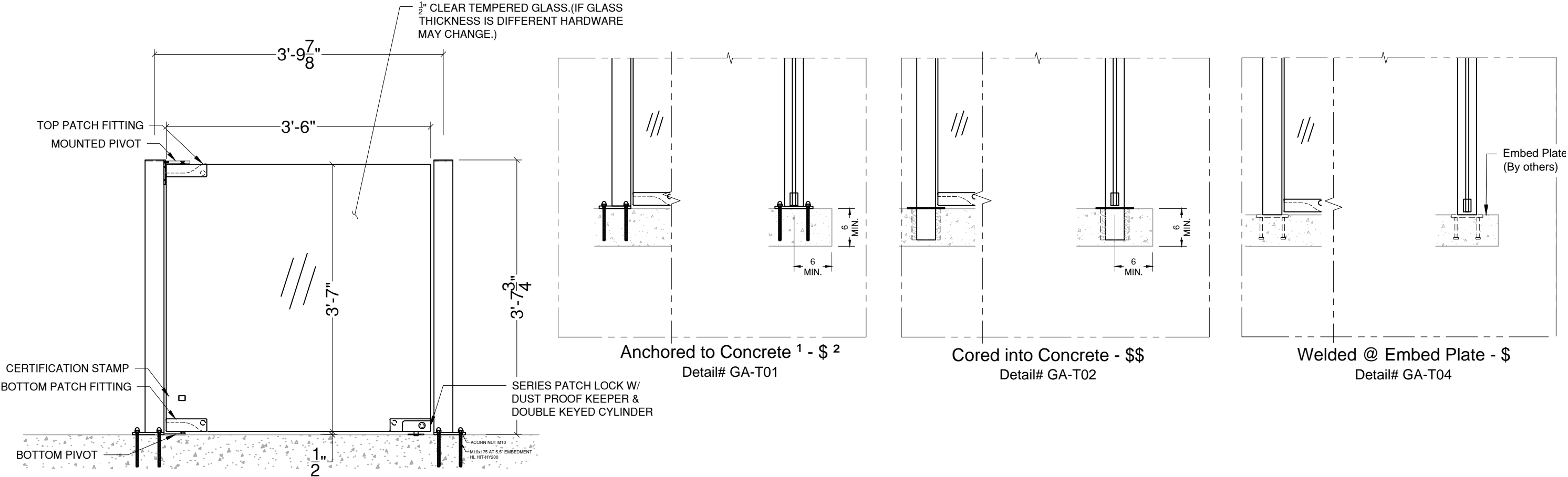


PERFORATED
INFILL



WIREMESH
INFILL

Visit <https://vivarailings.com/> for range of infill options.

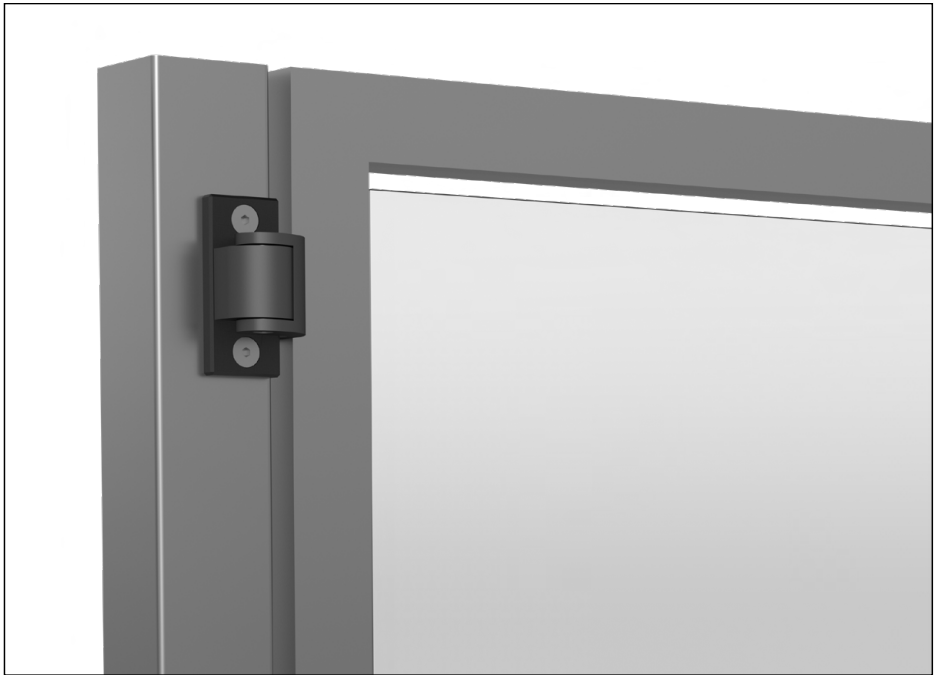


(1) Min. 4000 PSI concrete, Typ.
(2) \$ to \$\$\$: Indicates mounting type comparative cost



FINISHING OPTIONS

#6 Satin



CeraShield* Ceramic Coating



Enhanced durability and superior protection.
Available in a wide range of colors.
(Replaces traditional powder coat finish options.)

*VIVA Railings now proudly offers CERASHIELD Ceramic Coating (powered by CERAKOTE Technology) as our premium finishing option, providing enhanced durability and superior protection for interior and exterior applications. While CERASHIELD offers unparalleled advantages in hardness, corrosion resistance, UV stability, and chemical resistance, we will continue to offer standard Powder Coat finishes to meet a variety of aesthetic preferences.

Powder Coat



Powder coating is an environmentally-friendly option because it doesn't rely on solvents or chemical carriers. Instead, an electrostatic charge holds the paint to the steel, thus eliminating VOC emissions which will help in regards to LEED requirements. In addition, it meets AAMA specifications. Powder coating is durable and scratch resistant so it weathers and retains its original hue better than conventional liquid coatings.*



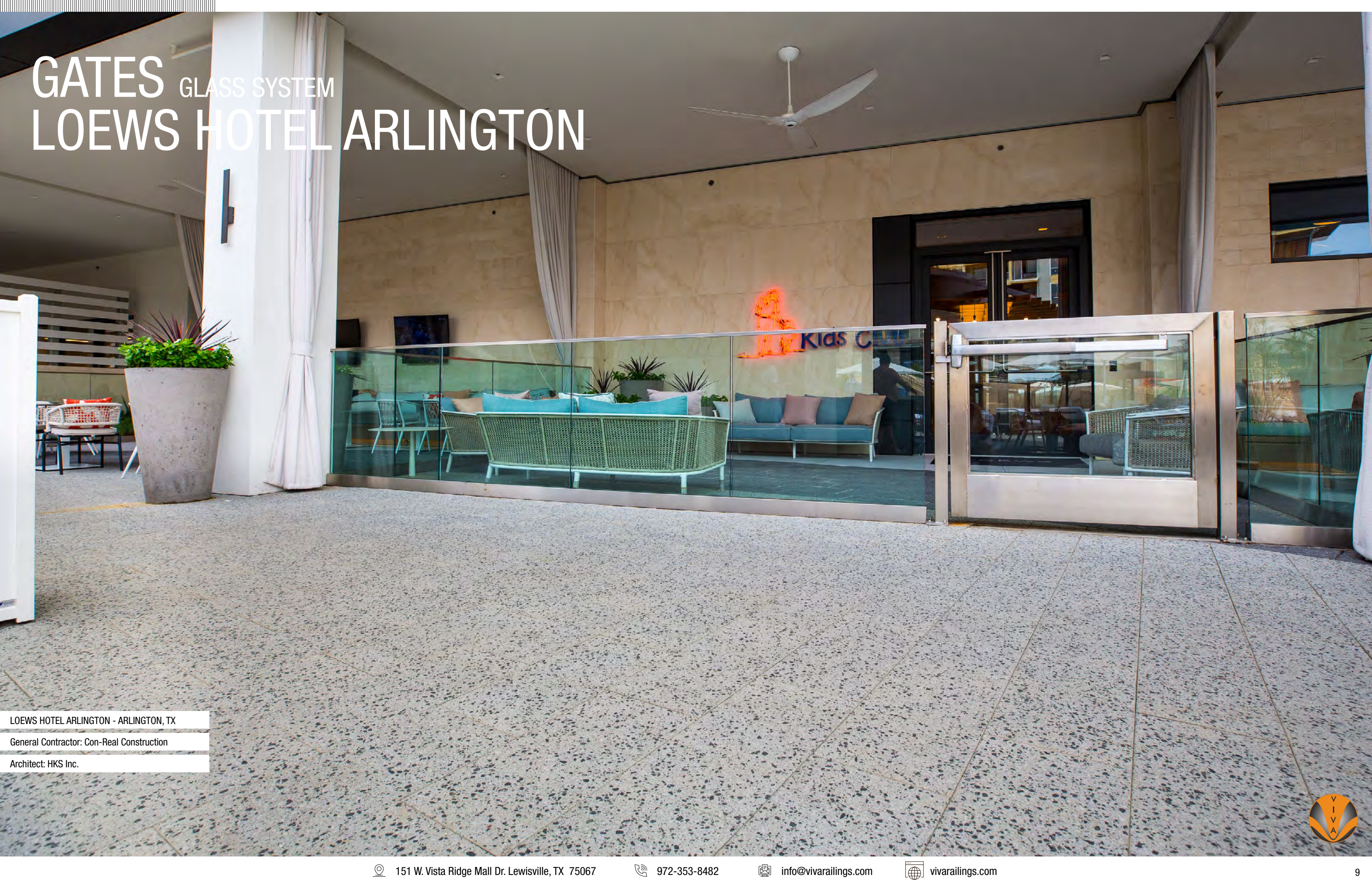
GATES GLASS SYSTEM ONE TOYOTA U.S. HEADQUARTERS



TOYOTA U.S. HEADQUARTERS - PLANO, TX
General Contractor: Austin Industries
Architect: Corgan Associates Inc.



GATES GLASS SYSTEM LOEWS HOTEL ARLINGTON



LOEWS HOTEL ARLINGTON - ARLINGTON, TX
General Contractor: Con-Real Construction
Architect: HKS Inc.





GATES GLASS SYSTEM HALL ARTS HOTEL

HALL ARTS HOTEL - DALLAS, TX
General Contractor: Austin Commercial
Architect: HKS



GATES METAL SYSTEM OMNI PGA RESORT



OMNI PGA RESORT - FRISCO, TX

General Contractor: Brasfield & Gorrie

Architect: SB Architects



DESIGN + ENGINEER + FABRICATE + INSTALL

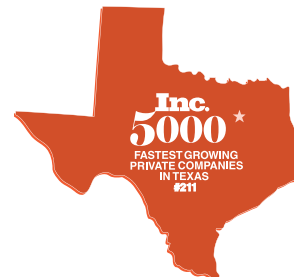
151 W. Vista Ridge Mall Dr. Lewisville, TX 75067

(Dallas/Fort Worth Metroplex)

PH: 972.353.8482 | info@vivarailings.com
vivarailings.com



Inc. Magazine 500 | 5000
VIVA RAILINGS, LLC.
Among The Fastest Growing
US Companies
Eight Years in a Row
2012-2019



Inc. Magazine 500 | 5000
VIVA RAILINGS, LLC.
Among The Fastest Growing
Texas Companies
#211



ICC-ES 4405 Certified
SHOE™
Structural Glass Railing System



LEED
Material & Resources Credits 4.1 and 4.2



The American Institute of Architects



The California Contractors State License
Board Certified