



SUN CONTROL SYSTEM

Laser Cut Panels

# SUN CONTROL SYSTEM™ PRODUCT DATA



## VIVA RAILINGS

LEADERS IN ARCHITECTURAL RAILING SYSTEMS

DESIGN • ENGINEER • FABRICATE • INSTALL



# SUN CONTROL SYSTEM

SUN CONTROL SYSTEM

Laser Cut Panels

Laser cut sun control and shade structures are fast becoming the ideal choice for commercial spaces and applications, with a range of choices in both design and material. These systems aid in controlling sunlight in architectural spaces and are precise, functional and durable. Our MetalSpaces range of products offer comprehensive and quality architectural solutions for laser-cut metal panels, from custom space dividers and lighting panels to sun control and shade structures.

- TYPES
- BROW
- WING
- VERTICAL
- SHADOWBOX

- APPLICATIONS
- WINDOW CANOPIES
- SUN BAFFLES
- VERTICAL SUN CONTROL

- FEATURES
- EASY TO INSTALL
- FRONT LOADING

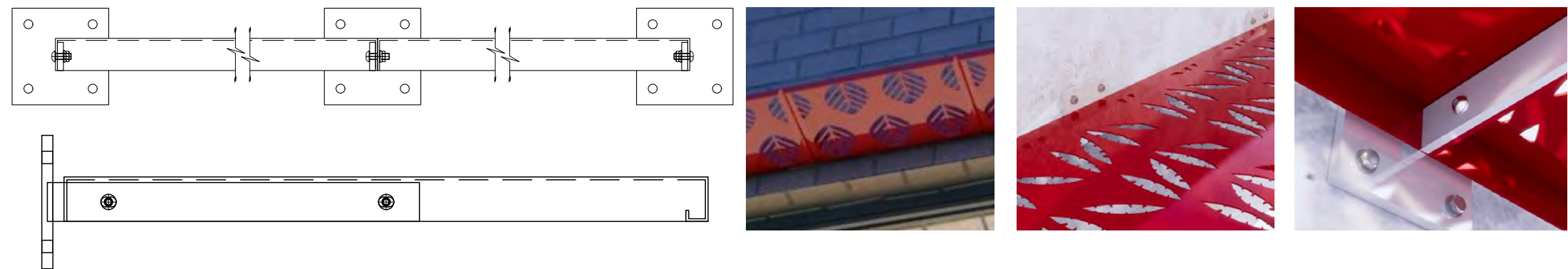
- OPTION (SHAPES)
- VERTICAL PANEL
- HORIZONTAL PANEL




# BROW & WING TYPE - TECHNICAL DATA

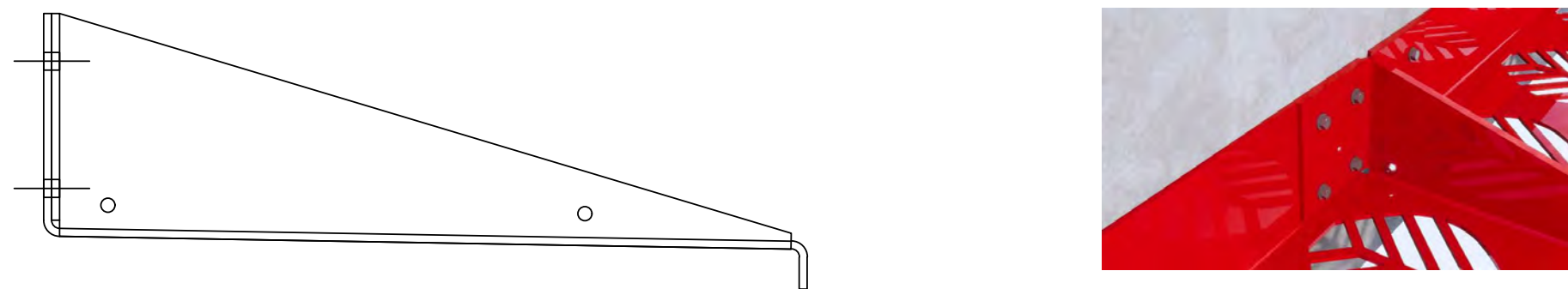
## BROW (TYPE B) - TECHNICAL DATA

	MATERIAL	FINISH	WIDTH / LENGTH
BROW SYSTEM TYPE B	Aluminum: 1/8", 3/16" & 1/4"	Powder Coat, PVDF	2'-0" wide x 6'-0" long max 3'-0" wide x 4'-0" long max
	Stainless Steel: 14GA	Brushed Satin	



## WING (TYPE W) - TECHNICAL DATA

	MATERIAL	FINISH	WIDTH / LENGTH	
WING SYSTEM TYPE W	Aluminum: 1/8", 3/16" & 1/4"	Powder Coat, PVDF	1'-6" 2'-0" 3'-0" max	6'-0" max.
	Stainless Steel: 14GA	Brushed Satin		



Above options are available in any of our Standard Patterns (pg xx), FotoFacade (pg xx) or Custom Pattern  
Standard cost-effective sizes shown, custom sizes available at a premium cost add.

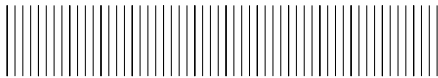


All LED LINEAR products are ETL certified;  
ETL mark is proof of product compliance to  
North American safety standard.





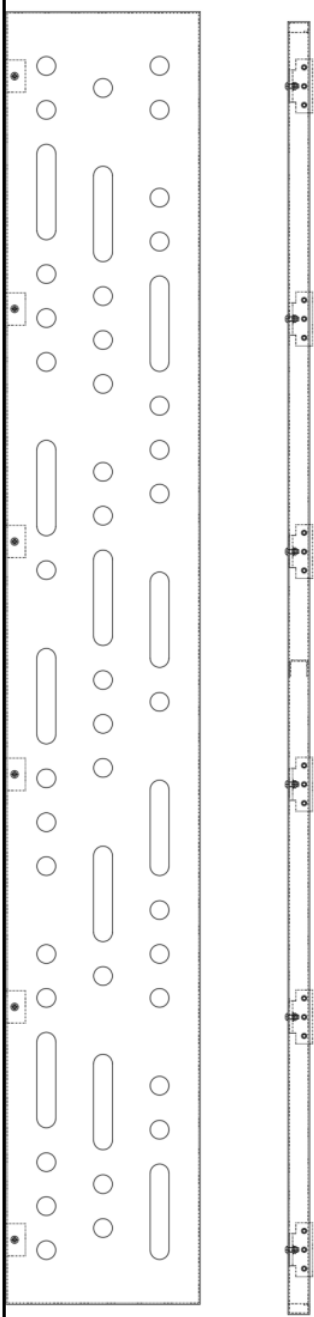
# WALL SYSTEM - VERTICAL (TYPE V) TECHNICAL DATA



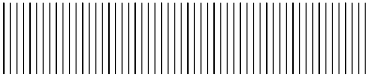
**VERTICAL SYSTEM  
TYPE V**

MATERIAL	FINISH	WIDTH / LENGTH	
Aluminum: 1/8", 3/16" & 1/4"	Powder Coat, PVDF	1'-0"	4'-6"
Stainless Steel: 14GA	Brushed Satin	1'-6"	7'-6"
		2'-0" max.	9'-6"

Above options are available in any of our Standard Patterns, FotoFacade or Custom Pattern  
Standard cost-effective sizes shown, custom sizes available at a premium cost add.



# SHADOW BOX - (TYPE SB) TECHNICAL DATA

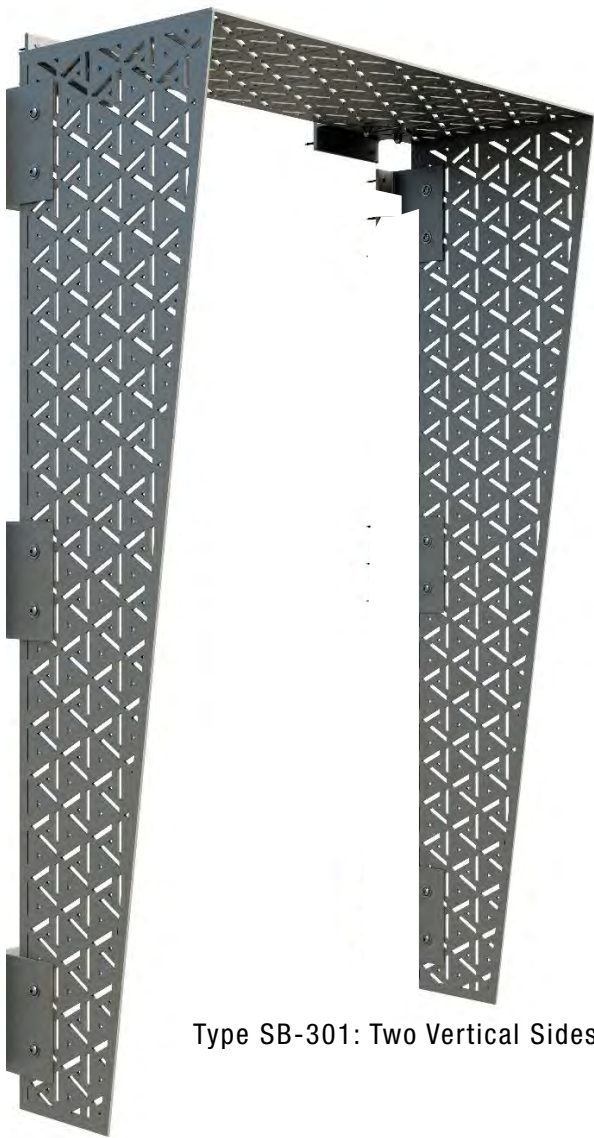


SHADE BOX

MATERIAL	FINISH	WIDTH	HEIGHT	LENGTH
Aluminum: 1/8", 3/16" & 1/4"	Powder Coat, PVDF	1'-0" 1'-6" 2'-0" max.	5'-0" 8'-0" 10'-0"	4'-0" 5'-0" 6'-0" 8'-0" 10'-0"
Stainless Steel: 14GA	Brushed Satin			



Type SB-300: One Vertical Side



Type SB-301: Two Vertical Sides

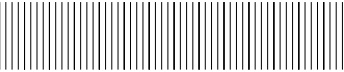
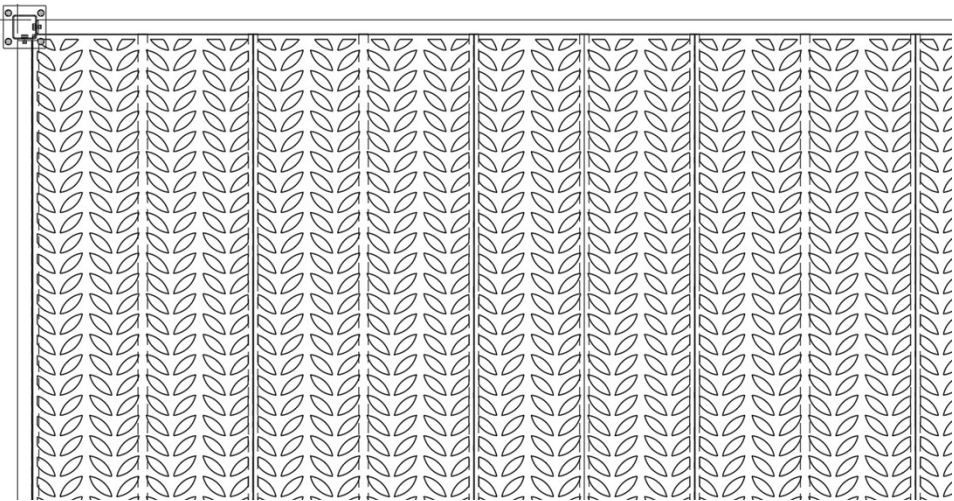
Above options are available in any of our Standard Patterns, FotoFacade or Custom Pattern  
Standard cost-effective sizes shown, custom sizes available at a premium cost add.





# SHADE STRUCTURE - TECHNICAL DATA

APPLICATIONS	FEATURES	OPTION (SHAPES)
OUTDOOR SEATING	SUN CONTROL	SQUARE
PARKS AND PLAYGROUNDS	EASE OF INSTALL	RECTANGULAR
GAZEBO	PRE-ENGINEERED SYSTEMS	ROUND
PARKING		
COVERED WALKWAYS		



	MATERIAL	FINISH	FRAMING MATERIAL	FRAMING FINISH	SIZE
SQUARE SHAPE	Aluminum: 1/8", 3/16" & 1/4"	Powder Coat, PVDF	Steel columns and Steel beams	Zinc Primer and Powder Coat Red Oxide Primer	10'-0" x 10'-0"
	Stainless Steel: 14GA	Brushed Satin			
	Steel: 14GA , 11GA	Powder Coat, Weathered, Mill			
RECTANGULAR SHAPE	Aluminum: 1/8", 3/16" & 1/4"	Powder Coat, PVDF	Steel columns and Steel beams	Zinc Primer and Powder Coat Red Oxide Primer	12'-0" x 15'-0" 16'-0" x 20'-0"
	Stainless Steel: 14GA	Brushed Satin			
	Steel: 14GA , 11GA	Powder Coat, Weathered, Mill			
ROUND SHAPE	Aluminum: 1/8", 3/16" & 1/4"	Powder Coat, PVDF	Steel columns and Steel beams	Zinc Primer and Powder Coat Red Oxide Primer	12'-0" O.D. 16'-0" O.D.
	Stainless Steel: 14GA	Brushed Satin			
	Steel: 14GA , 11GA	Powder Coat, Weathered, Mill			

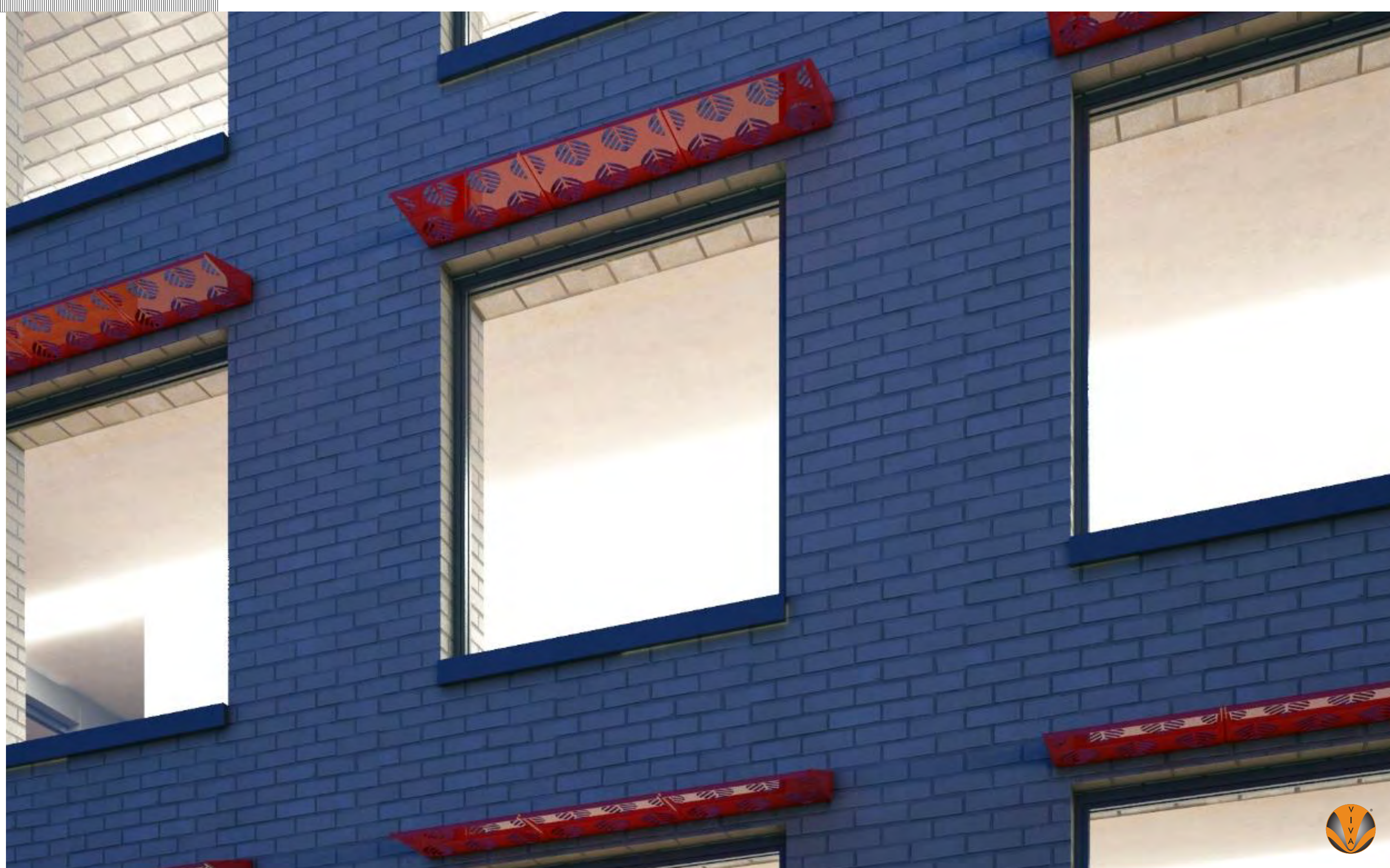
Above options are available in any of our Standard Patterns, FotoFacade or Custom Pattern

Standard cost-effective sizes shown, custom sizes available at a premium cost add.

VIVA RAILINGS IS NOT RESPONSIBLE FOR THE STRUCTURAL INTEGRITY OF ANY BUILDING SYSTEMS OR OTHER MATERIALS NOT FURNISHED BY VIVA RAILINGS. VIVA RAILINGS HAS NO WAY OF KNOWING AND SPECIFICALLY DISCLAIMS WHETHER OR NOT THE BUILDING SYSTEMS TO WHICH VIVA RAILINGS' PRODUCTS ARE TO BE ATTACHED ARE STRUCTURALLY SOUND OR DESIGNED TO PROPERLY SUPPORT VIVA RAILINGS'S MATERIALS. ANY SUCH DESIGN RESPONSIBILITY BELONGS TO OTHERS FOR WHOM VIVA RAILINGS IS NOT RESPONSIBLE. THESE DRAWINGS ARE INTENDED FOR THE SOLE USE OF VIVA RAILINGS' CUSTOMER AND THEIR AGENTS FOR THE INSTALLATION OF PRODUCTS FURNISHED BY VIVA RAILINGS. VIVA RAILINGS REMAINS THE SOLE OWNER OF ALL DESIGNS AND INTELLECTUAL PROPERTY CONTAINED WITHIN. REPRODUCTION AND USE OF THESE DESIGNS FOR ANY OTHER PURPOSE IS FORBIDDEN. SCALES ARE PROVIDED FOR REFERENCE ONLY. FOR PRODUCT INFORMATION AND TECHNICAL SUPPORT, PLEASE CONTACT VIVA RAILINGS.









# SHADE STRUCTURES STERLING PARK SAFETY CENTER



STERLING PARK SAFETY CENTER - STERLING, VA  
General Contractor: Kinsley Construction  
Architect: Moseley Architects





# SHADE STRUCTURES ANNE ARUNDEL SEVERN INTERGENERATIONAL CENTER

ANNE ARUNDEL SEVERN INTERGENERATIONAL CENTER - SEVERN, MD  
General Contractor: Towson Mechanical, Inc.  
Architect: Murphy And Dittenhafer Inc













DESIGN + ENGINEER + FABRICATE + INSTALL

151 W. Vista Ridge Mall Dr. Lewisville, TX 75067

(Dallas/Fort Worth Metroplex)

PH: 972.353.8482 | info@vivarailings.com  
vivarailings.com



Inc. Magazine 500 | 5000  
VIVA RAILINGS, LLC.  
Among The Fastest Growing  
US Companies  
Eight Years in a Row  
**2012-2019**



Inc. Magazine 500 | 5000  
VIVA RAILINGS, LLC.  
Among The Fastest Growing  
Texas Companies  
**#211**



ICC-ES 4405 Certified  
**SHOE™**  
Structural Glass Railing System



LEED  
Material & Resources Credits 4.1 and 4.2



The American Institute of Architects



The California Contractors State License  
Board Certified

