



VIEW - AVAILABLE INFILLS

Glass

VIEW™ GLASS RAILING SYSTEM PRODUCT DATA



VIVA RAILINGS
LEADERS IN ARCHITECTURAL RAILING SYSTEMS

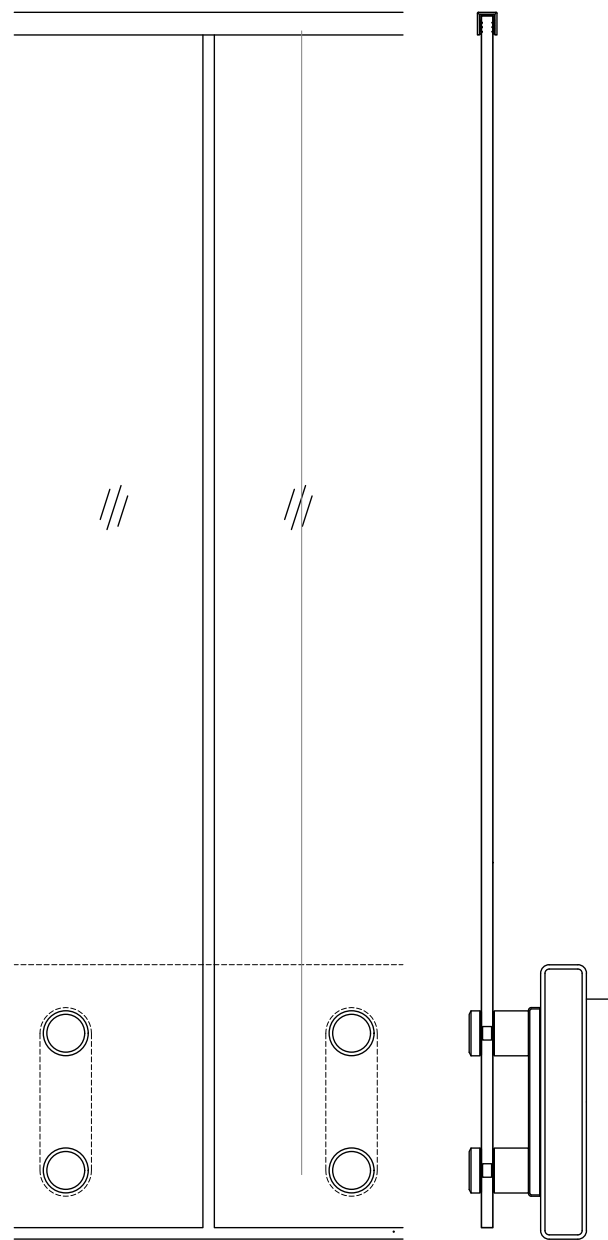
DESIGN + ENGINEER + FABRICATE + INSTALL

VIEW™ GLASS RAILING SYSTEM

VIEW - AVAILABLE INFILLS

Glass

VIEW glass panel railing system from Viva Railings offers a sleek and contemporary design that is perfect for modern architectural projects. The system features a minimalist design with a single bar post and a unique funnel or VIEW-shaped conical bracket that sits between the glass panels. This bracket serves a dual purpose, supporting the glass panels and providing a sturdy handrail.



Other mounting options available.



VIEW™

GLASS SYSTEM - TECHNICAL DATA

	MATERIAL	FINISH	SIZE/SPACING
STANDOFF	Stainless Steel (304 or 316)	#6 Satin	Ø2" Fascia mount, 4'-6" max.* Glass infill * Max. spacing changes upon glass thickness
	Stainless Steel (201)	Powder Coat	
INFILL OPTIONS	Glass	Clear, Tinted or Frit	Min. 1/2" SGP laminated glass ¹ or Min. 5/8" PVB laminated glass
TOP RAIL	Stainless Steel U-Cap	#6 Satin, Powder Coat	1" Height U-Cap
	Stainless Steel U-Cap with LED ²	#6 Satin	1" Height U-Cap with LED LINEAR
	Stainless Steel Tube with LED		Ø1-1/2" tube with LED LINEAR
HAND RAIL	Stainless Steel Tube	#6 Satin, Powder Coat	Ø1-1/2" or Ø2" tube
	Stainless Steel Tube with LED	#6 Satin	Ø1-1/2" with LED LINEAR, Ø1-1/2" or Ø2" with LED POD
	Wood (Red Oak, Cherry or Maple) ³	Unstained	Ø2"
	Wood (Red Oak, Cherry or Maple) with LED		Ø2" with LED LINEAR



Intertek

1. IBC 2015 & newer requires railing glass to be laminated. VIVA recommends SGP for exterior applications.

2. All LED LINEAR products are ETL certified; ETL mark is proof of product compliance to North American safety standard.

3. Other species available upon request.

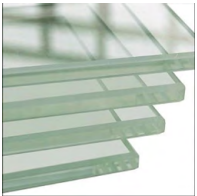


VIEW RAILING SYSTEM

GLASS INFILL



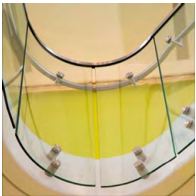
AVAILABLE GLASS TYPES



Clear Monolithic



Clear Laminated (PVB or SGP)



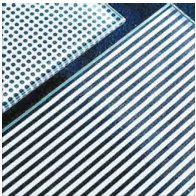
Bent



Tinted



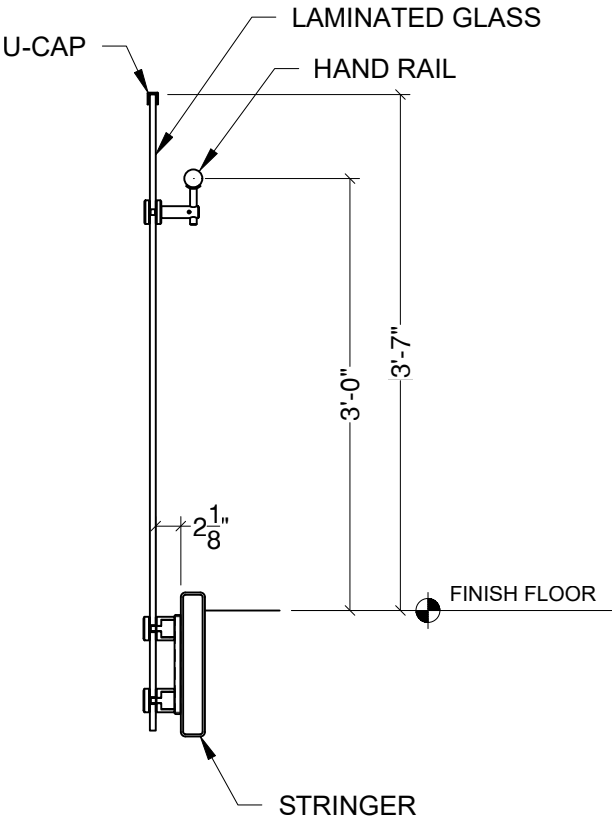
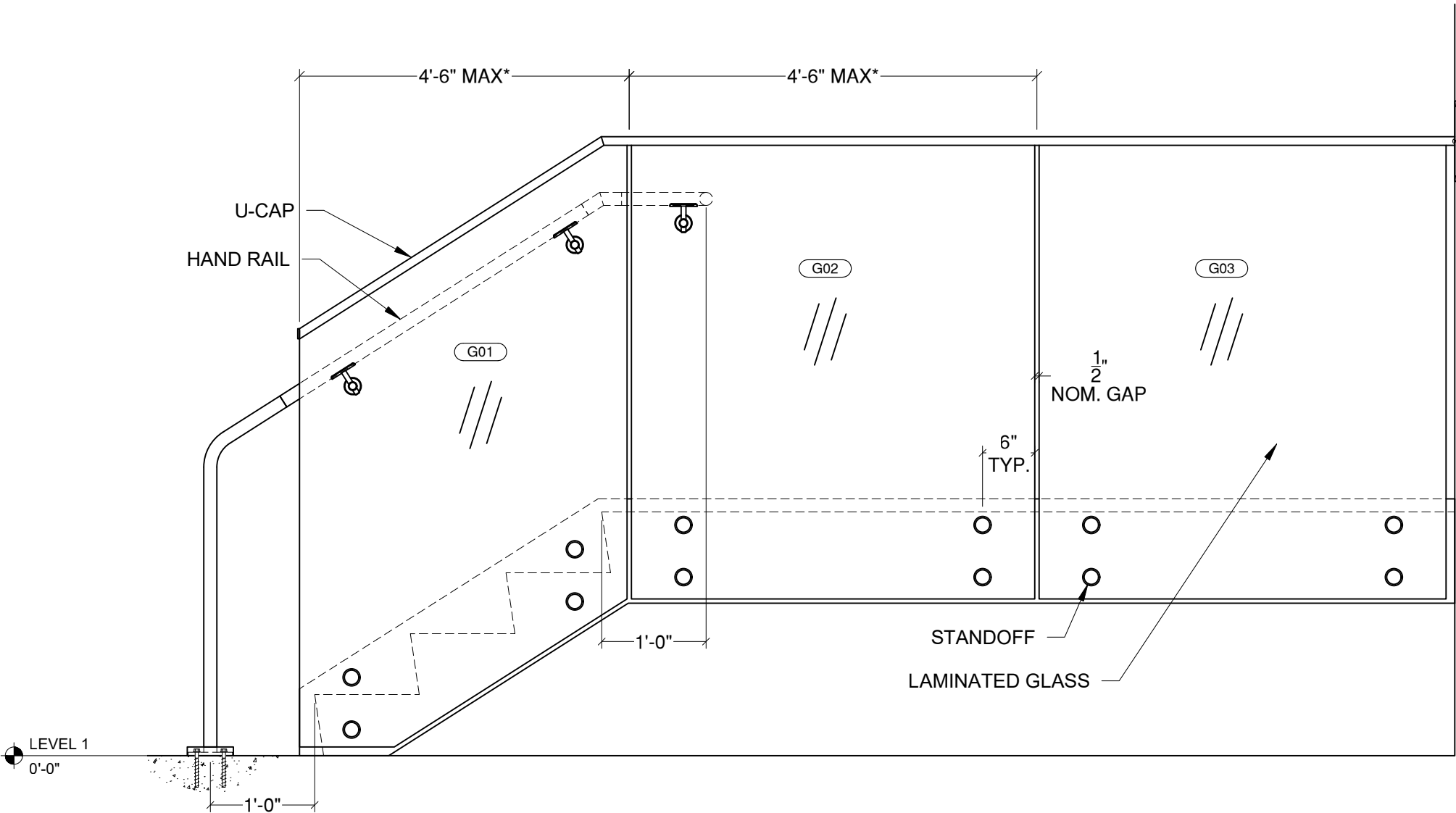
Satin Etched



Ceramic Frit



Colored Laminate (PVB only)



TOP RAIL OPTIONS

* Max. spacing changes upon glass thickness.

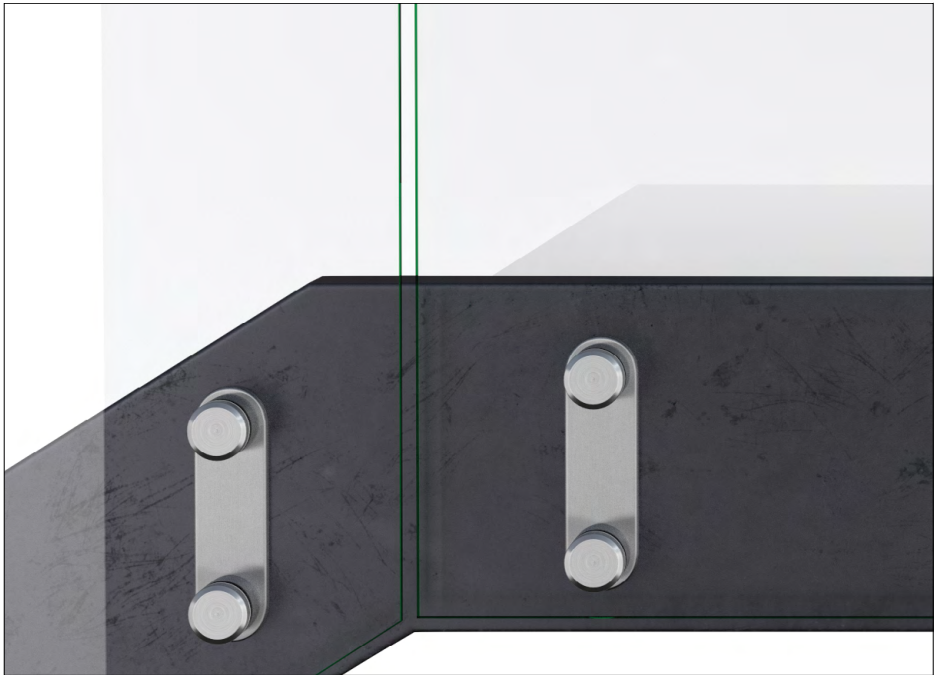
VIVA RAILINGS IS NOT RESPONSIBLE FOR THE STRUCTURAL INTEGRITY OF ANY BUILDING SYSTEMS OR OTHER MATERIALS NOT FURNISHED BY VIVA RAILINGS. VIVA RAILINGS HAS NO WAY OF KNOWING AND SPECIFICALLY DISCLAIMS WHETHER OR NOT THE BUILDING SYSTEMS TO WHICH VIVA RAILINGS' PRODUCTS ARE TO BE ATTACHED ARE STRUCTURALLY SOUND OR DESIGNED TO PROPERLY SUPPORT VIVA RAILINGS'S MATERIALS. ANY SUCH DESIGN RESPONSIBILITY BELONGS TO OTHERS FOR WHOM VIVA RAILINGS IS NOT RESPONSIBLE. THESE DRAWINGS ARE INTENDED FOR THE SOLE USE OF VIVA RAILINGS' CUSTOMER AND THEIR AGENTS FOR THE INSTALLATION OF PRODUCTS FURNISHED BY VIVA RAILINGS. VIVA RAILINGS REMAINS THE SOLE OWNER OF ALL DESIGNS AND INTELLECTUAL PROPERTY CONTAINED WITHIN. REPRODUCTION AND USE OF THESE DESIGNS FOR ANY OTHER PURPOSE IS FORBIDDEN. SCALES ARE PROVIDED FOR REFERENCE ONLY. FOR PRODUCT INFORMATION AND TECHNICAL SUPPORT, PLEASE CONTACT VIVA RAILINGS.



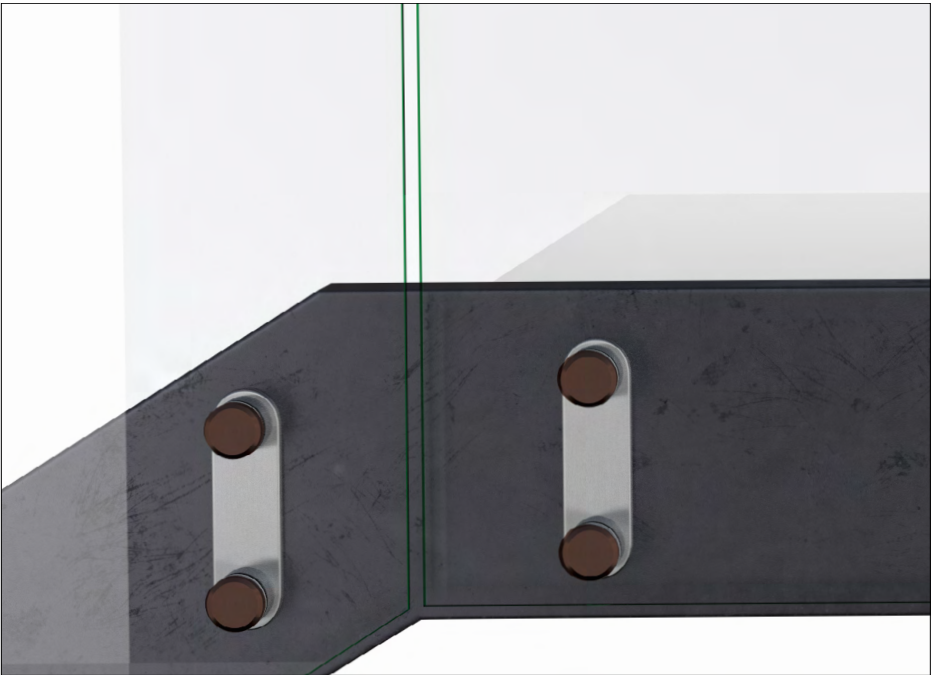
VIEW GLASS RAILING SYSTEM

FINISHING OPTIONS

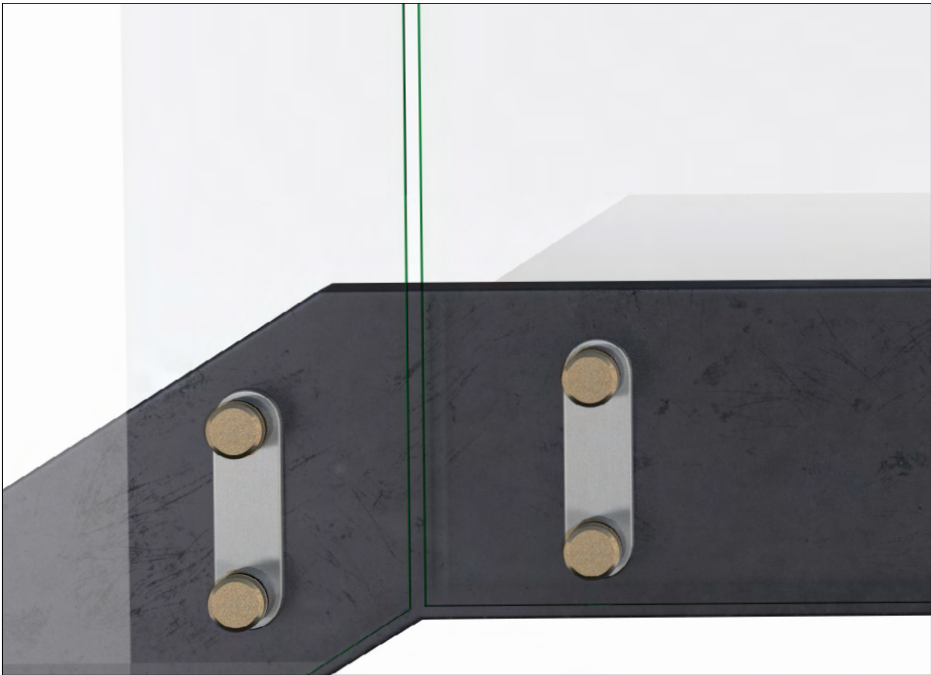
#6 Satin



CeraShield* Ceramic Coating



Powder Coat



Enhanced durability and superior protection.
Available in a wide range of colors.
(Replaces traditional powder coat finish options.)

*VIVA Railings now proudly offers CeraShield Ceramic Coating (powered by CERAKOTE Technology) as our premium finishing option, providing enhanced durability and superior protection for interior and exterior applications. While CeraShield offers unparalleled advantages in hardness, corrosion resistance, UV stability, and chemical resistance, we will continue to offer standard Powder Coat finishes to meet a variety of aesthetic preferences.

Powder coating is an environmentally-friendly option because it doesn't rely on solvents or chemical carriers. Instead, an electrostatic charge holds the paint to the steel, thus eliminating VOC emissions which will help in regards to LEED requirements. In addition, it meets AAMA specifications. Powder coating is durable and scratch resistant so it weathers and retains its original hue better than conventional liquid coatings.*



POWDER COAT FINISHING OPTIONS
CERASHIELD FINISHING OPTIONS

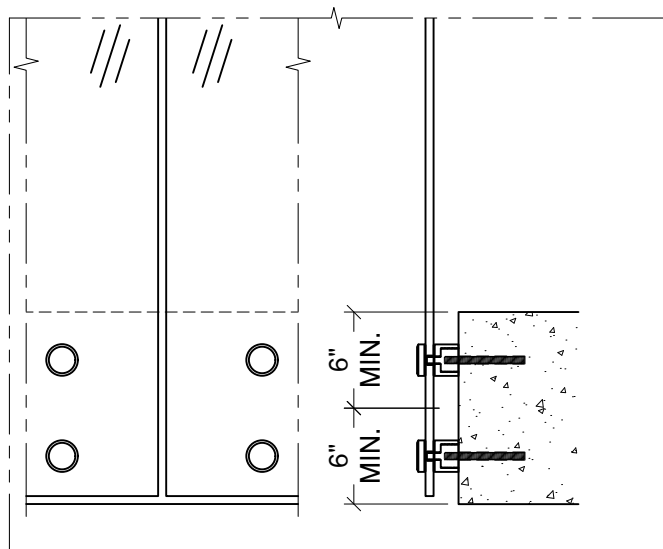
The digital swatches of our powder coat colors may not accurately represent the actual real-life samples. Factors such as monitor settings, lighting conditions, and individual perception can affect the colors you see on your screen. We suggest using the swatches as a general reference for color, shade, and hue, rather than expecting an exact match. For the most precise color selection, we recommend requesting physical samples or visiting our office in Lewisville, TX to evaluate the powder coat colors in person.

Please note that while we offer a diverse range of standard powder coat colors to complement our products, any selections outside of these standard options may incur additional costs. We encourage you to consult with our specialists to explore all available options and make the best decision for your project needs.



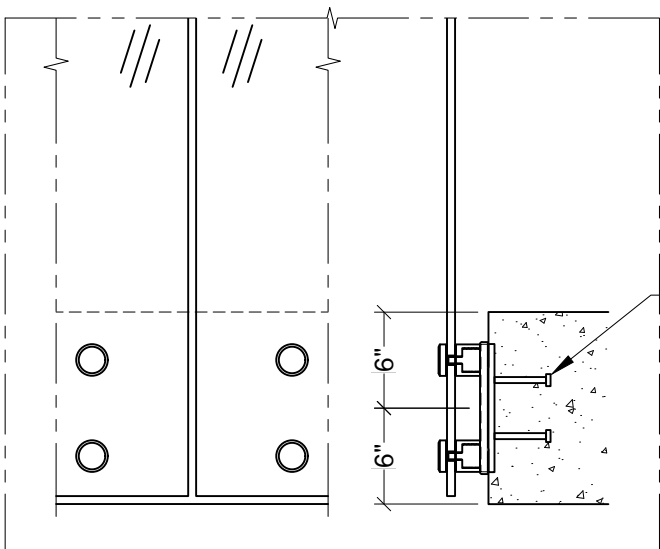
VIEW RAILING SYSTEM

MOUNTING CONDITION, FASCIA MOUNTED POST



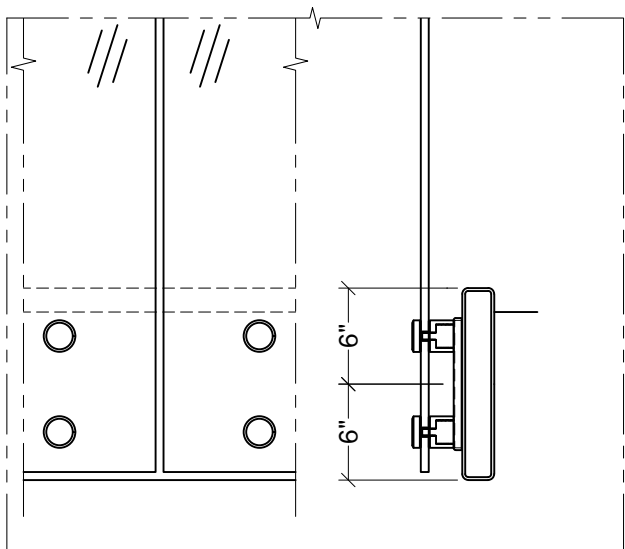
Anchored to Concrete ¹ - \$\$\$ ²

Detail# VA-F01



Welded @ Embed Plate - \$\$

Detail# VA-F02



Welded @ Steel Tube - \$\$

Detail# VA-F03

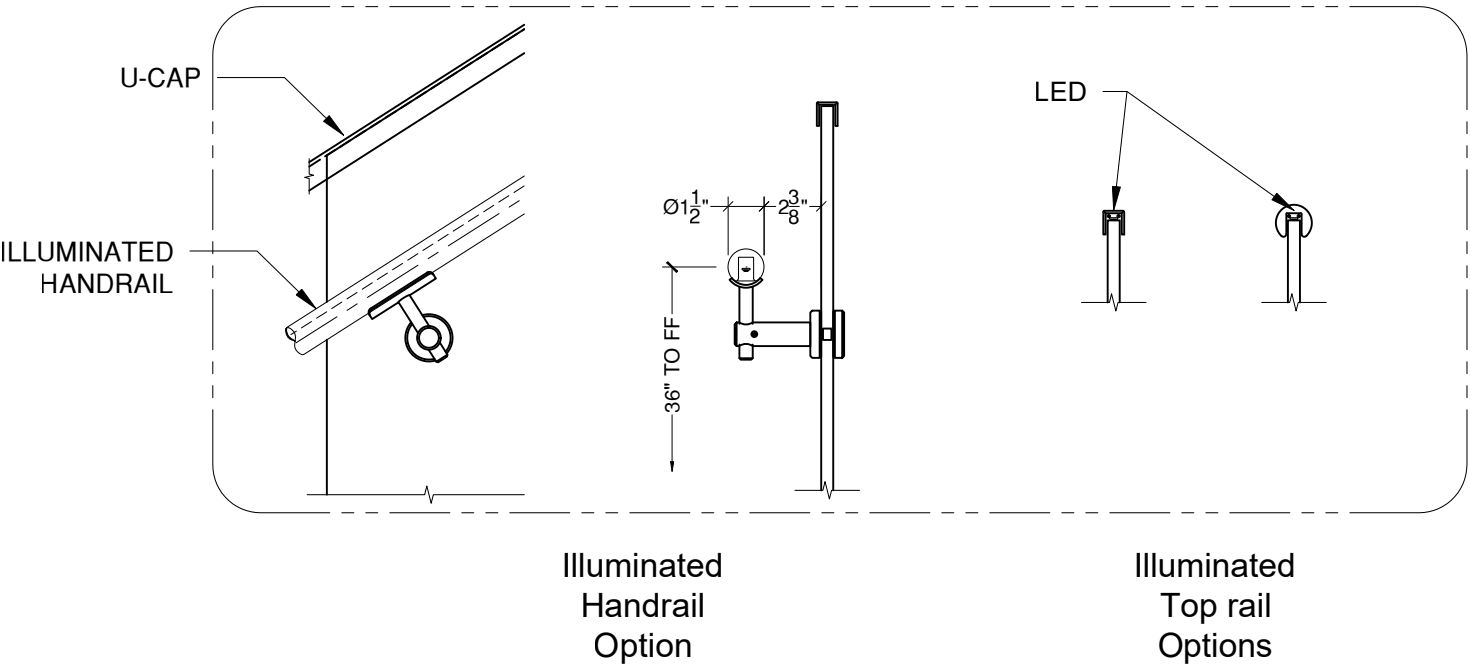
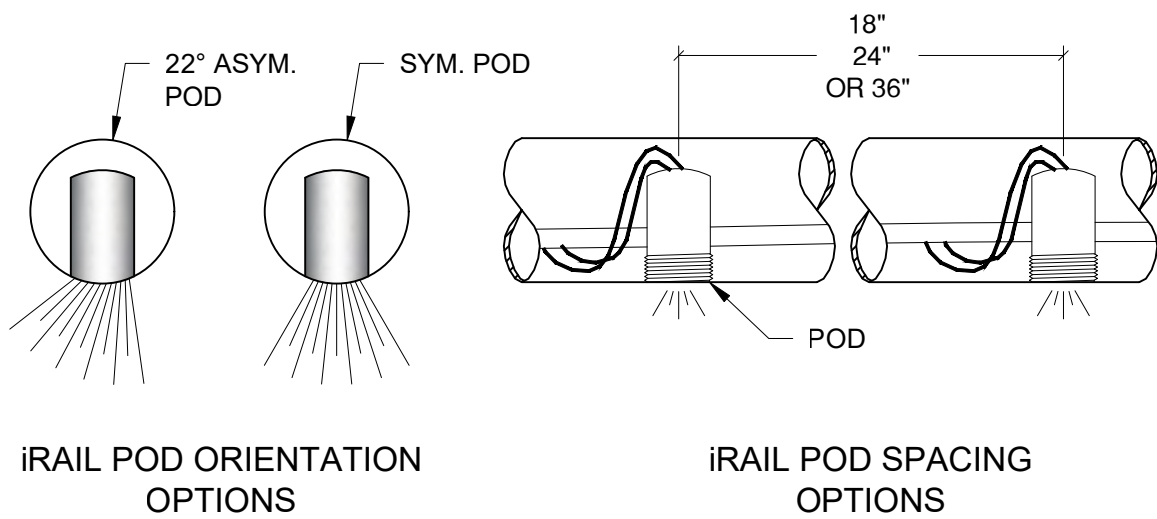
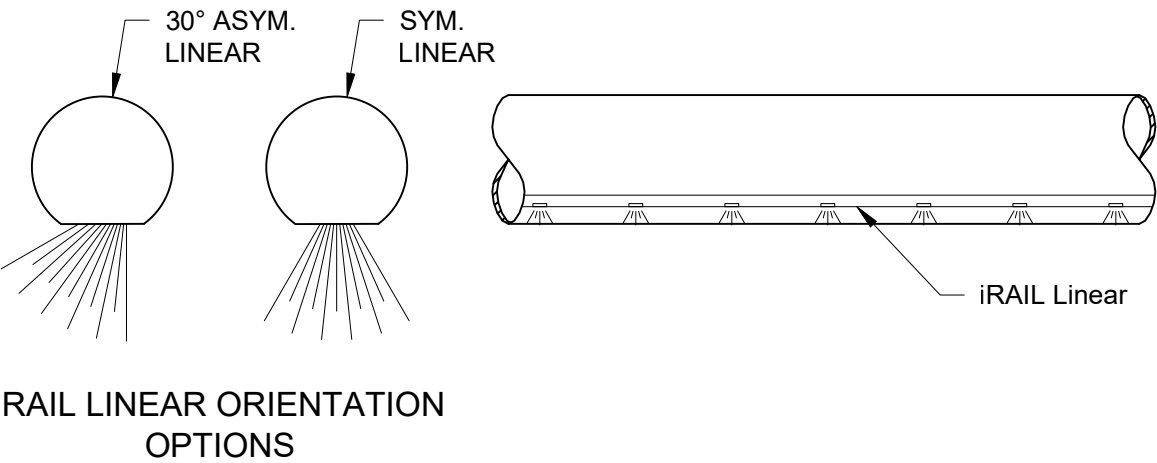
(1) Min. 4000 PSI concrete, Typ.
(2) \$ to \$\$\$: Indicates mounting type comparative cost

VIVA RAILINGS IS NOT RESPONSIBLE FOR THE STRUCTURAL INTEGRITY OF ANY BUILDING SYSTEMS OR OTHER MATERIALS NOT FURNISHED BY VIVA RAILINGS. VIVA RAILINGS HAS NO WAY OF KNOWING AND SPECIFICALLY DISCLAIMS WHETHER OR NOT THE BUILDING SYSTEMS TO WHICH VIVA RAILINGS' PRODUCTS ARE TO BE ATTACHED ARE STRUCTURALLY SOUND OR DESIGNED TO PROPERLY SUPPORT VIVA RAILINGS'S MATERIALS. ANY SUCH DESIGN RESPONSIBILITY BELONGS TO OTHERS FOR WHOM VIVA RAILINGS IS NOT RESPONSIBLE. THESE DRAWINGS ARE INTENDED FOR THE SOLE USE OF VIVA RAILINGS' CUSTOMER AND THEIR AGENTS FOR THE INSTALLATION OF PRODUCTS FURNISHED BY VIVA RAILINGS. VIVA RAILINGS REMAINS THE SOLE OWNER OF ALL DESIGNS AND INTELLECTUAL PROPERTY CONTAINED WITHIN. REPRODUCTION AND USE OF THESE DESIGNS FOR ANY OTHER PURPOSE IS FORBIDDEN. SCALES ARE PROVIDED FOR REFERENCE ONLY. FOR PRODUCT INFORMATION AND TECHNICAL SUPPORT, PLEASE CONTACT VIVA RAILINGS.



VIEW RAILING SYSTEM

ILLUMINATED RAILING



iRAIL LIGHTED RAILING SYSTEM



VIEW GLASS RAILING SYSTEM SMU FRANCES ANNE MOODY HALL

SMU FRANCES ANNE MOODY HALL - DALLAS, TX

General Contractor: The Beck Group

Architect: Smithgroup Inc



VIEW GLASS RAILING SYSTEM UT DALLAS SCIENCE CENTER

UNIV. OF TEXAS DALLAS SCIENCE EDUCATION CENTER - DALLAS, TX
General Contractor: Linbeck Group
Architect: Stantec Corporation

VIEW GLASS RAILING SYSTEM WEST COAST UNIVERSITY



WEST COAST UNIVERSITY - RICHARDSON, TX
General Contractor: Pogue Construction
Architect: Huckabee Architects



VIEW GLASS RAILING SYSTEM UNK SCIENCE EDUCATION BUILDING



UNK SCIENCE & ENGINEERING BUILDING - KEARNEY NE
General Contractor: RDG USA
Architect: Kearney Glass





DESIGN + ENGINEER + FABRICATE + INSTALL

151 W. Vista Ridge Mall Dr. Lewisville, TX 75067

(Dallas/Fort Worth Metroplex)

PH: 972.353.8482 | info@vivarailings.com
vivarailings.com



Inc. Magazine 500 | 5000
VIVA RAILINGS, LLC.
Among The Fastest Growing
US Companies
Eight Years in a Row
2012-2019



Inc. Magazine 500 | 5000
VIVA RAILINGS, LLC.
Among The Fastest Growing
Texas Companies
#211



ICC-ES 4405 Certified
SHOE™
Structural Glass Railing System



LEED
Material & Resources Credits 4.1 and 4.2



The American Institute of Architects



The California Contractors State License
Board Certified