



VISIO - AVAILABLE INFILLS  
Glass

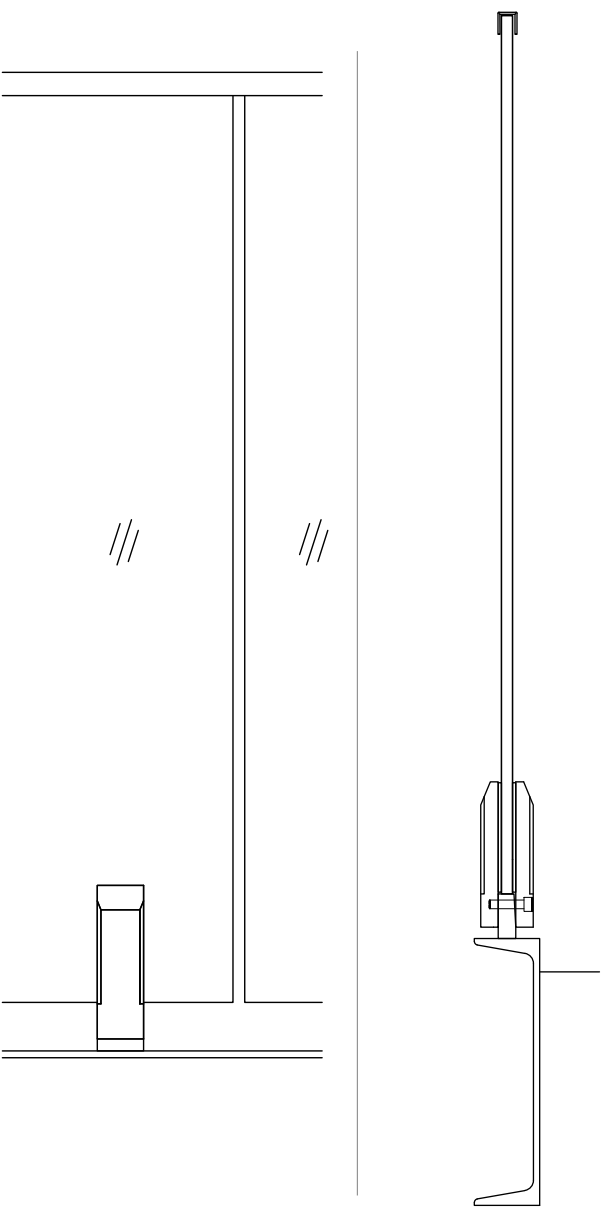
# VISIO™ GLASS RAILING SYSTEM PRODUCT DATA





# VISIO™ GLASS RAILING SYSTEM

VISIO glass panel railing system from Viva Railings offers a sleek and contemporary design that is perfect for modern architectural projects. The system features a minimalist design with a single bar post and a unique funnel or VISIO-shaped conical bracket that sits between the glass panels. This bracket serves a dual purpose, supporting the glass panels and providing a sturdy handrail.



VISIO - AVAILABLE INFILLS

Glass

Other mounting options available.



# VISION<sup>TM</sup> GLASS SYSTEM - TECHNICAL DATA

	MATERIAL	FINISH	SIZE/SPACING
CLAMP	Stainless Steel (304 or 316)	#6 Satin	Clamp @ 4'-0" max. O.C. Spacing for Glass Panels. Fascia or Top mount.
	Stainless Steel (201)	Powder Coat	
INFILL OPTIONS	Glass	Clear, Tinted or Frit	Min. 1/2" SGP laminated glass <sup>1</sup> Min. 5/8" PVB laminated glass
TOP RAIL	Stainless Steel U-Cap	#6 Satin, Powder Coat	1" Height U-Cap
	Stainless Steel U-Cap with LED <sup>3</sup>	#6 Satin	1" Height U-Cap with LED LINEAR
	Stainless Steel Tube with LED	#6 Satin	Ø1-1/2" tube with LED LINEAR
HAND RAIL	Stainless Steel Tube	#6 Satin, Powder Coat	Ø1-1/2" or Ø2" tube
	Wood (Red Oak, Cherry or Maple) <sup>2</sup>	Unstained	Ø1-1/2" with LED LINEAR, Ø1-1/2" or Ø2" with LED POD
	Stainless Steel Tube with LED	Unstained	Ø2" with LED LINEAR
	Wood (Red Oak, Cherry or Maple) with LED		

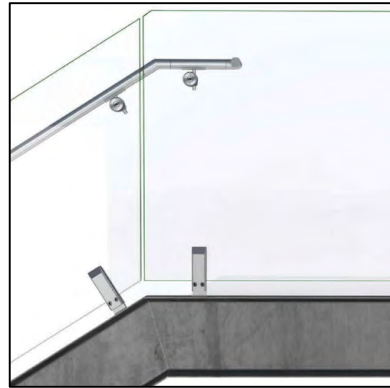


1. IBC 2015 & newer requires railing glass to be laminated. VIVA recommends SGP for exterior applications.

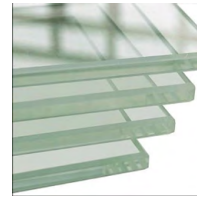
2. All LED LINEAR products are ETL certified; ETL mark is proof of product compliance to North American safety standard.

3. Other species available upon request.

# **VISIO** RAILING SYSTEM **GLASS INFILL, TOP MOUNT**



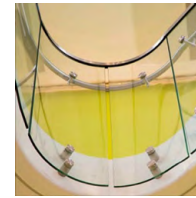
## AVAILABLE GLASS TYPES



Clear  
Monolithic



Clear Laminated  
(PVB or SGP)



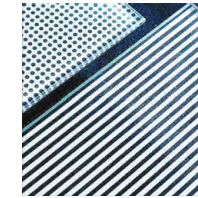
Bent



Tinted



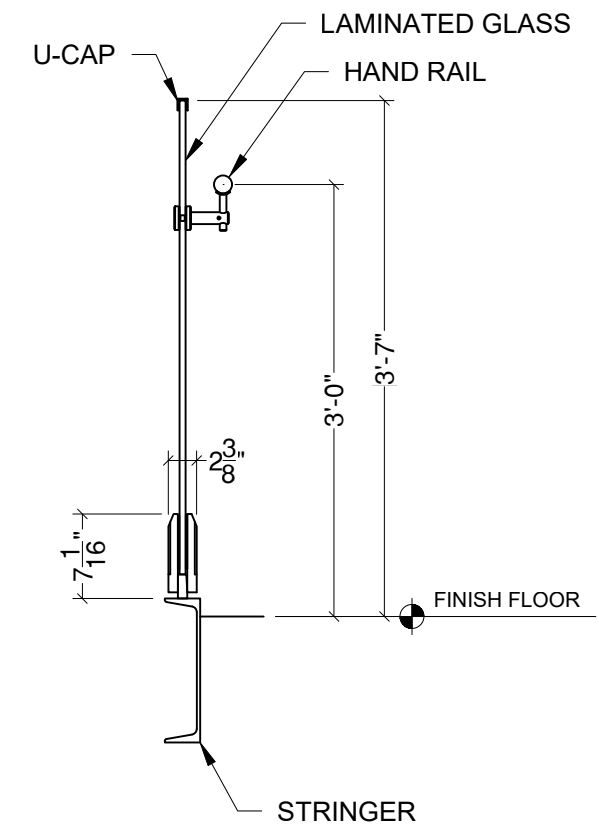
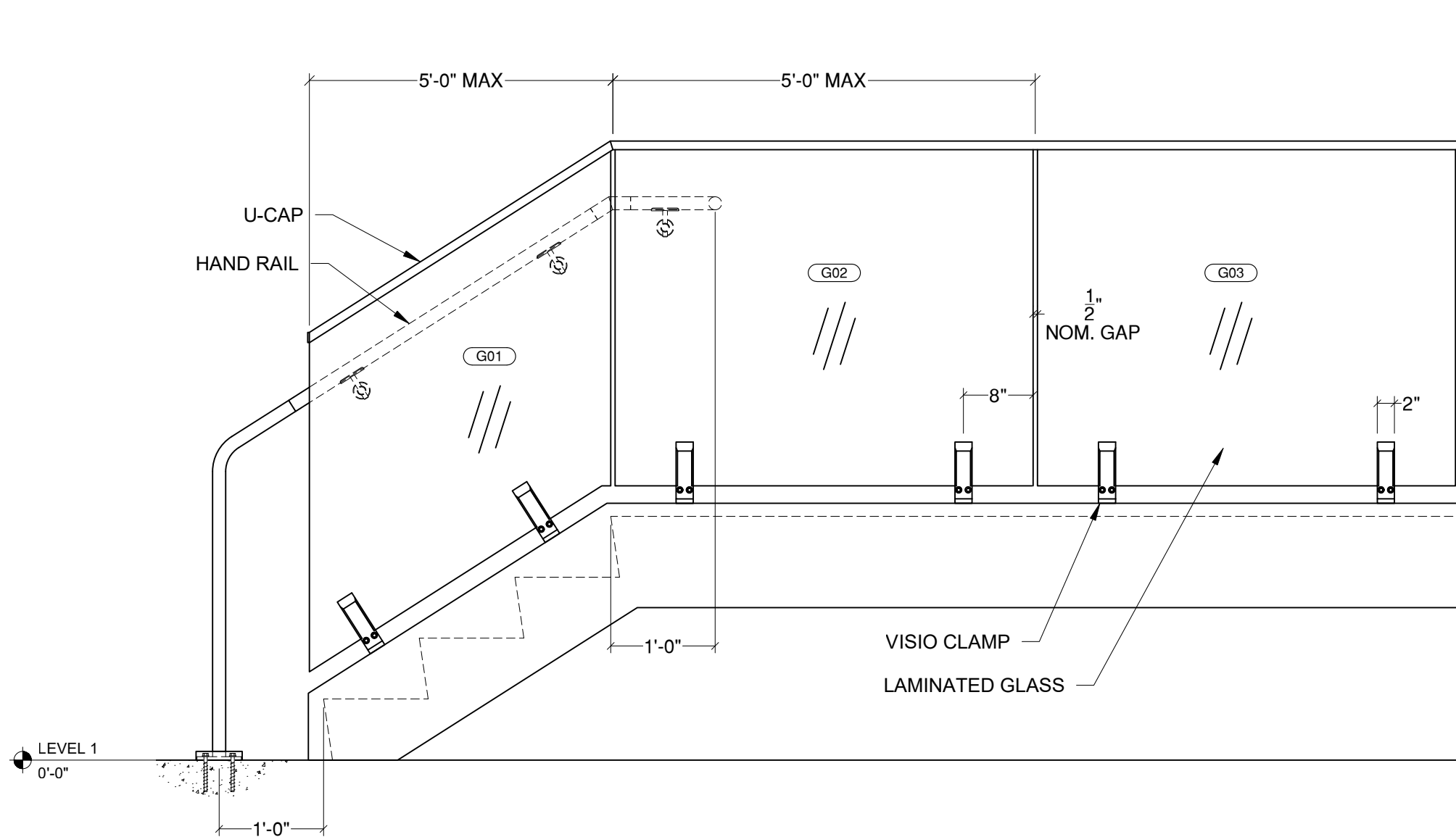
Satin  
Etched



Ceramic Frit



Colored Laminate  
(PVB only)



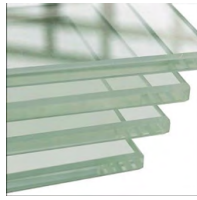
VIVA RAILINGS IS NOT RESPONSIBLE FOR THE STRUCTURAL INTEGRITY OF ANY BUILDING SYSTEMS OR OTHER MATERIALS NOT FURNISHED BY VIVA RAILINGS. VIVA RAILINGS HAS NO WAY OF KNOWING AND SPECIFICALLY DISCLAIMS WHETHER OR NOT THE BUILDING SYSTEMS TO WHICH VIVA RAILINGS' PRODUCTS ARE TO BE ATTACHED ARE STRUCTURALLY SOUND OR DESIGNED TO PROPERLY SUPPORT VIVA RAILINGS'S MATERIALS. ANY SUCH DESIGN RESPONSIBILITY BELONGS TO OTHERS FOR WHOM VIVA RAILINGS IS NOT RESPONSIBLE. THESE DRAWINGS ARE INTENDED FOR THE SOLE USE OF VIVA RAILINGS' CUSTOMER AND THEIR AGENTS FOR THE INSTALLATION OF PRODUCTS FURNISHED BY VIVA RAILINGS. VIVA RAILINGS REMAINS THE SOLE OWNER OF ALL DESIGNS AND INTELLECTUAL PROPERTY CONTAINED WITHIN. REPRODUCTION AND USE OF THESE DESIGNS FOR ANY OTHER PURPOSE IS FORBIDDEN. SCALES ARE PROVIDED FOR REFERENCE ONLY. FOR PRODUCT INFORMATION AND TECHNICAL SUPPORT, PLEASE CONTACT VIVA RAILINGS.





# VISIO RAILING SYSTEM

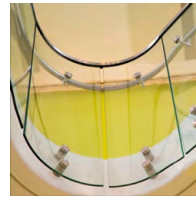
## AVAILABLE GLASS TYPES



Clear  
Monolithic



Clear Laminated  
(PVB or SGP)



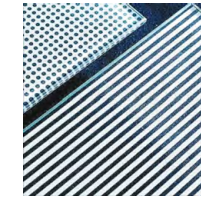
Bent



Tinted



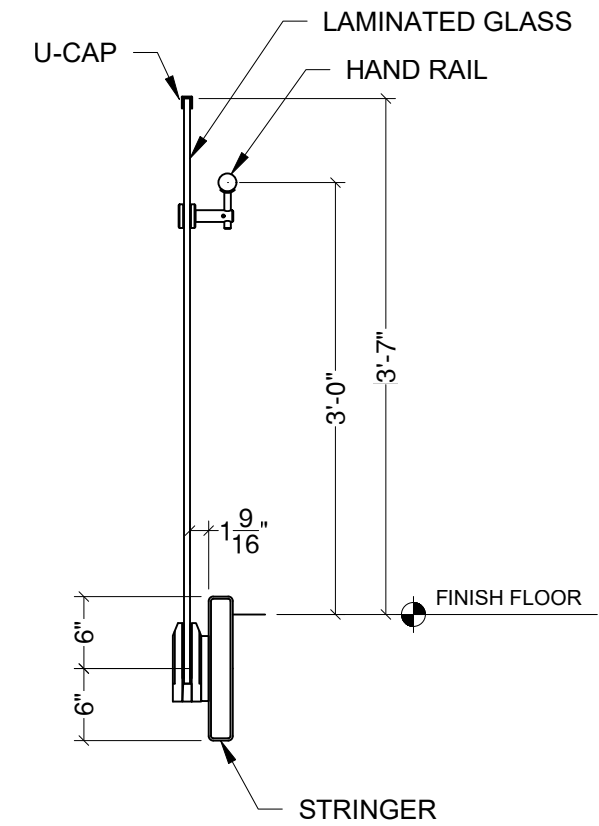
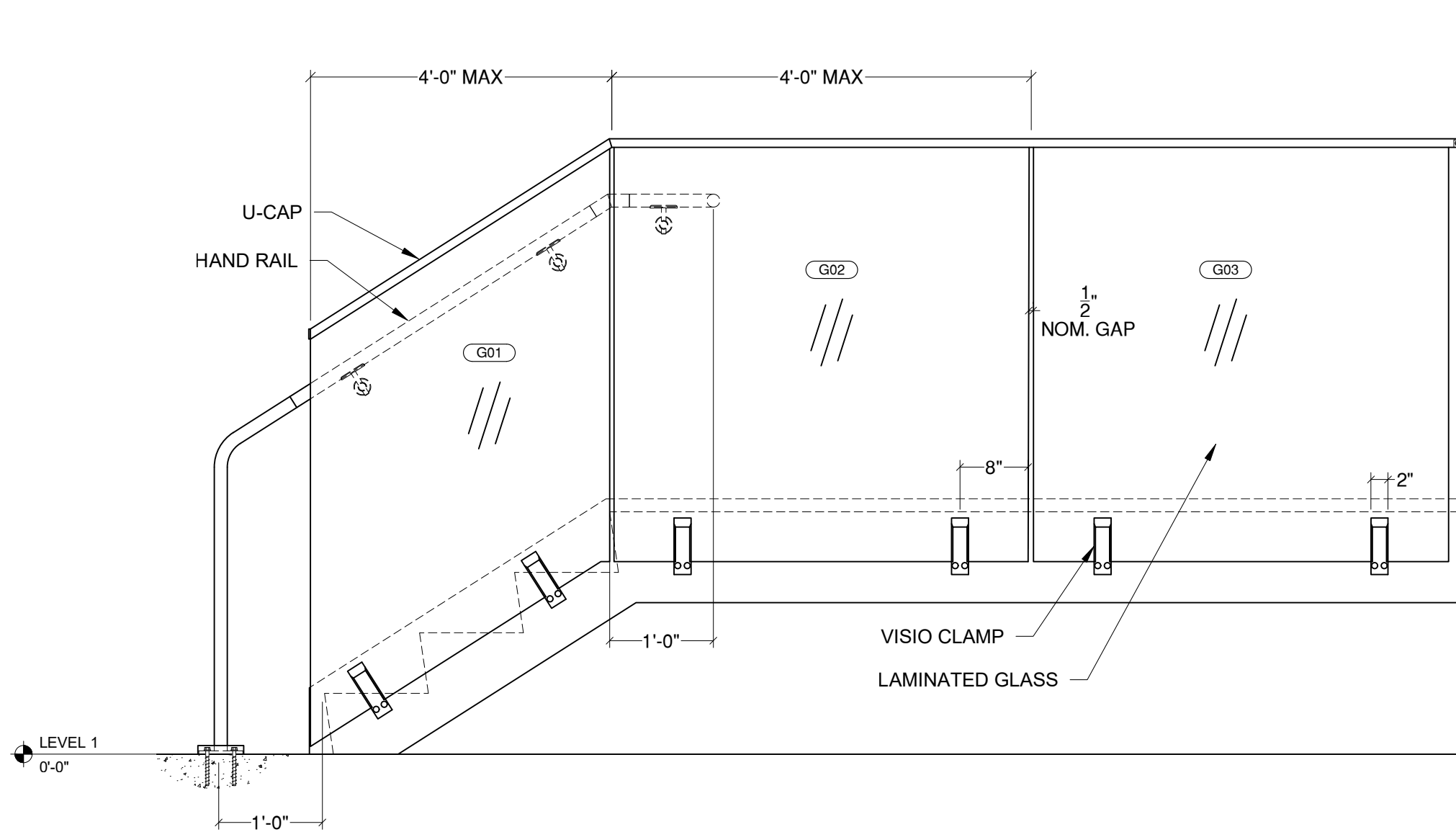
Satin  
Etched



Ceramic Frit



Colored Laminate  
(PVB only)



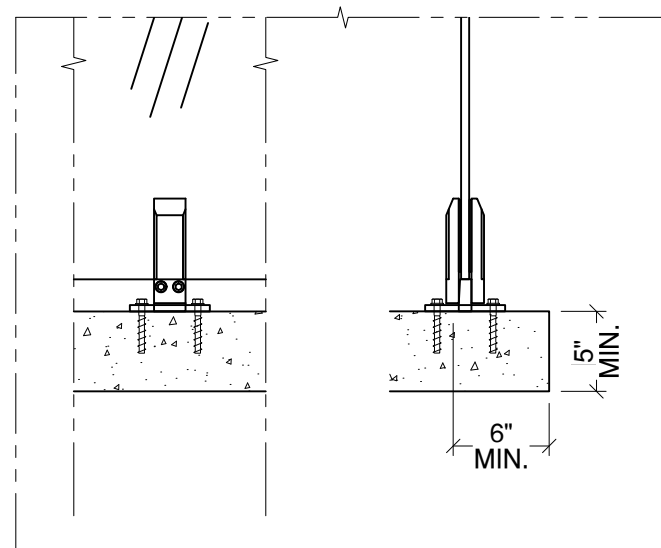
VIVA RAILINGS IS NOT RESPONSIBLE FOR THE STRUCTURAL INTEGRITY OF ANY BUILDING SYSTEMS OR OTHER MATERIALS NOT FURNISHED BY VIVA RAILINGS. VIVA RAILINGS HAS NO WAY OF KNOWING AND SPECIFICALLY DISCLAIMS WHETHER OR NOT THE BUILDING SYSTEMS TO WHICH VIVA RAILINGS' PRODUCTS ARE TO BE ATTACHED ARE STRUCTURALLY SOUND OR DESIGNED TO PROPERLY SUPPORT VIVA RAILINGS' S MATERIALS. ANY SUCH DESIGN RESPONSIBILITY BELONGS TO OTHERS FOR WHOM VIVA RAILINGS IS NOT RESPONSIBLE. THESE DRAWINGS ARE INTENDED FOR THE SOLE USE OF VIVA RAILINGS' CUSTOMER AND THEIR AGENTS FOR THE INSTALLATION OF PRODUCTS FURNISHED BY VIVA RAILINGS. VIVA RAILINGS REMAINS THE SOLE OWNER OF ALL DESIGNS AND INTELLECTUAL PROPERTY CONTAINED WITHIN. REPRODUCTION AND USE OF THESE DESIGNS FOR ANY OTHER PURPOSE IS FORBIDDEN. SCALES ARE PROVIDED FOR REFERENCE ONLY. FOR PRODUCT INFORMATION AND TECHNICAL SUPPORT, PLEASE CONTACT VIVA RAILINGS.





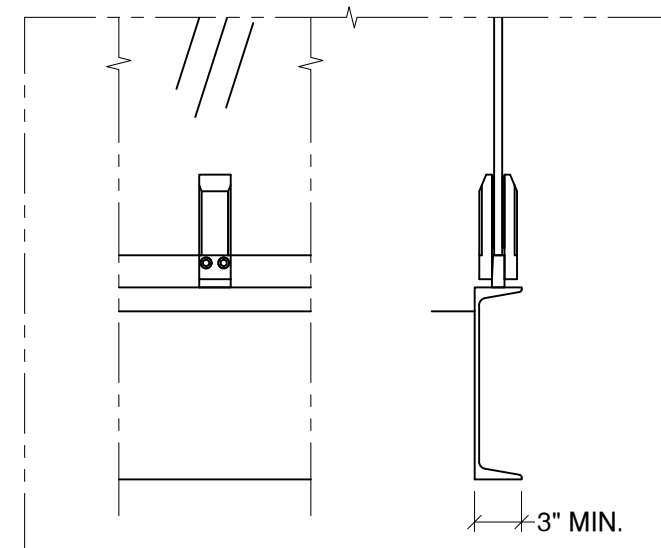
# VISIO RAILING SYSTEM

## MOUNTING CONDITION, TOP MOUNTED POST



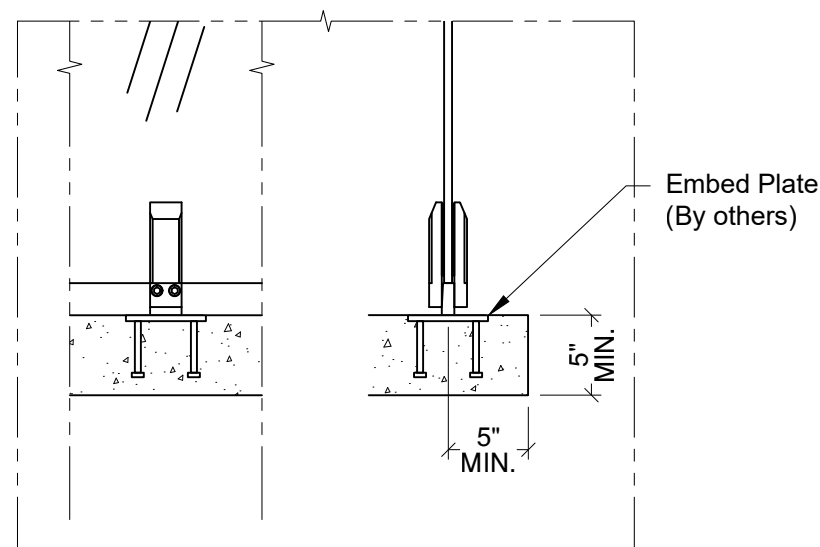
Anchored to Concrete <sup>1</sup> - \$ <sup>2</sup>

Detail# ZA-T01 <sup>3</sup>



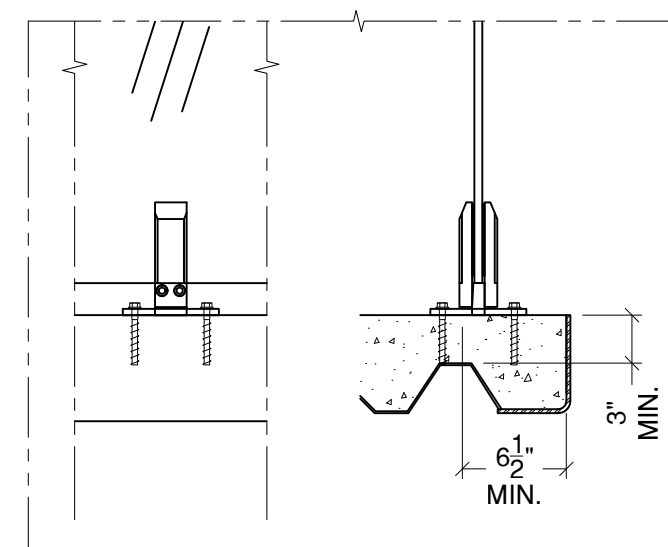
Welded @ Steel Channel - \$

Detail# ZA-T03



Welded @ Embed Plate - \$

Detail# ZA-T04



Anchored to Concrete Slab on Deck - \$\$

Detail# ZA-T05

(1) Min. 4000 PSI concrete, Typ.

(2) \$ to \$\$\$: Indicates mounting type comparative cost

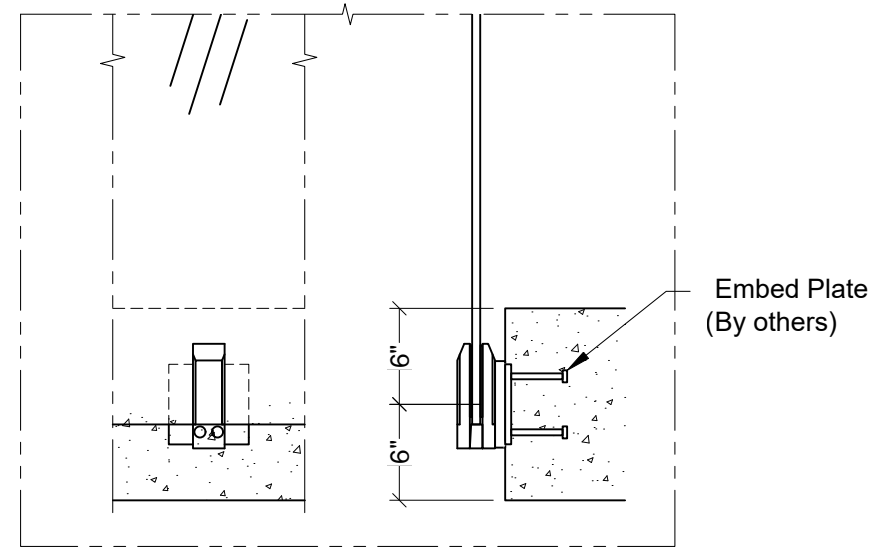
VIVA RAILINGS IS NOT RESPONSIBLE FOR THE STRUCTURAL INTEGRITY OF ANY BUILDING SYSTEMS OR OTHER MATERIALS NOT FURNISHED BY VIVA RAILINGS. VIVA RAILINGS HAS NO WAY OF KNOWING AND SPECIFICALLY DISCLAIMS WHETHER OR NOT THE BUILDING SYSTEMS TO WHICH VIVA RAILINGS' PRODUCTS ARE TO BE ATTACHED ARE STRUCTURALLY SOUND OR DESIGNED TO PROPERLY SUPPORT VIVA RAILINGS'S MATERIALS. ANY SUCH DESIGN RESPONSIBILITY BELONGS TO OTHERS FOR WHOM VIVA RAILINGS IS NOT RESPONSIBLE. THESE DRAWINGS ARE INTENDED FOR THE SOLE USE OF VIVA RAILINGS' CUSTOMER AND THEIR AGENTS FOR THE INSTALLATION OF PRODUCTS FURNISHED BY VIVA RAILINGS. VIVA RAILINGS REMAINS THE SOLE OWNER OF ALL DESIGNS AND INTELLECTUAL PROPERTY CONTAINED WITHIN. REPRODUCTION AND USE OF THESE DESIGNS FOR ANY OTHER PURPOSE IS FORBIDDEN. SCALES ARE PROVIDED FOR REFERENCE ONLY. FOR PRODUCT INFORMATION AND TECHNICAL SUPPORT, PLEASE CONTACT VIVA RAILINGS.



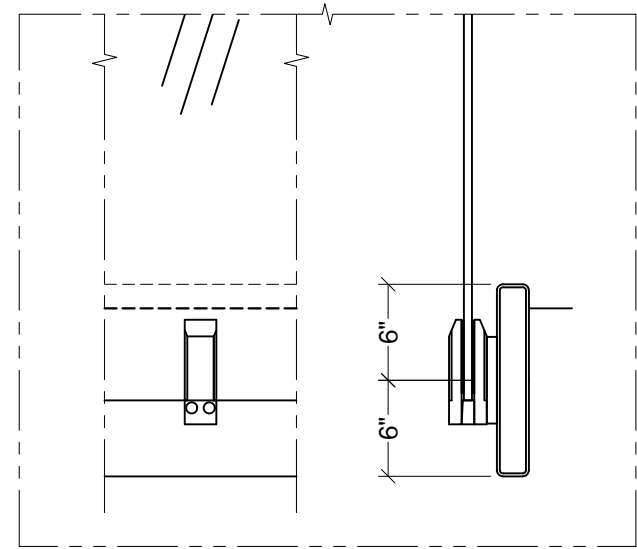


# VISIO RAILING SYSTEM

## MOUNTING CONDITION, FASCIA MOUNTED POST



Welded @ Embed Plate - \$\$  
Detail# ZA-F02



Welded @ Steel Tube - \$\$  
Detail# ZA-F04

(1) Min. 4000 PSI concrete, Typ.

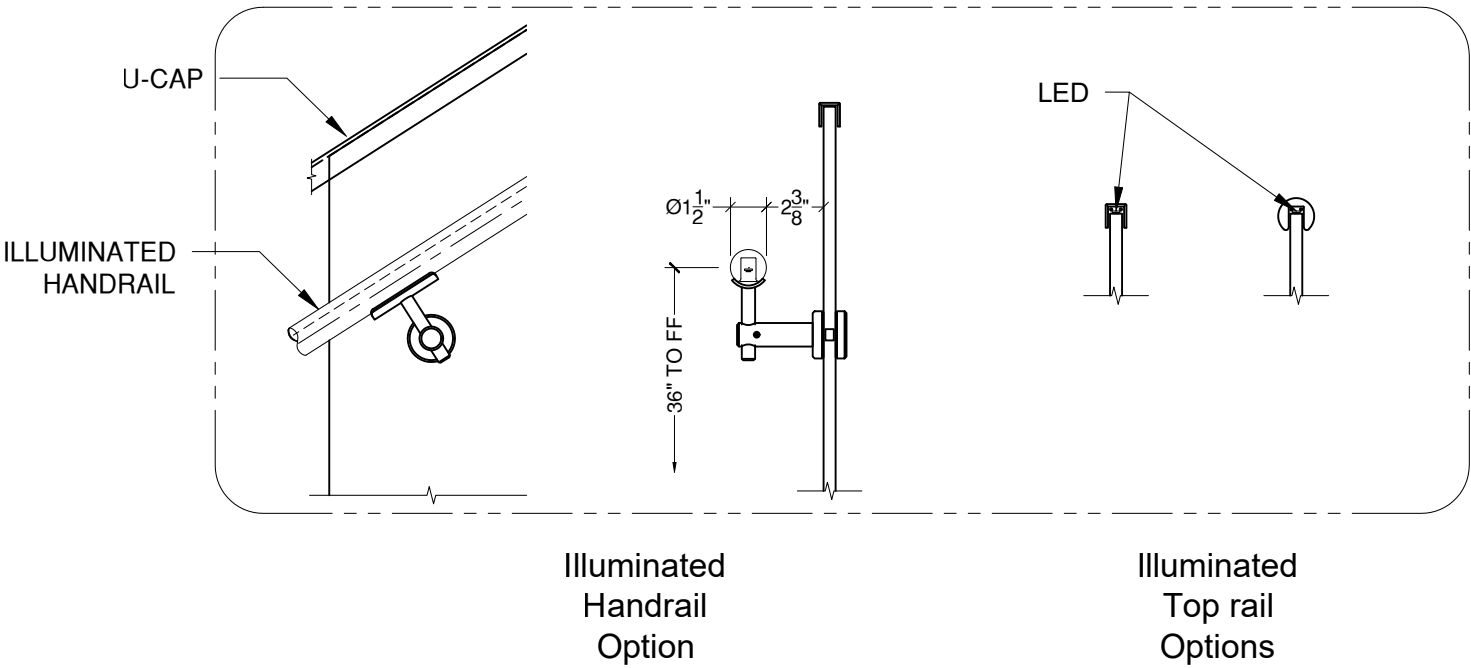
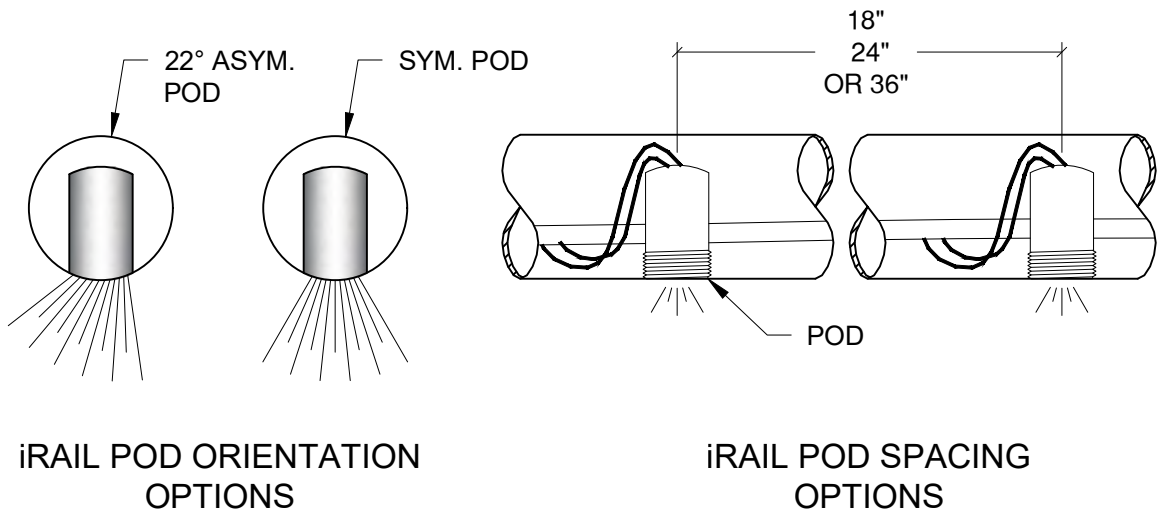
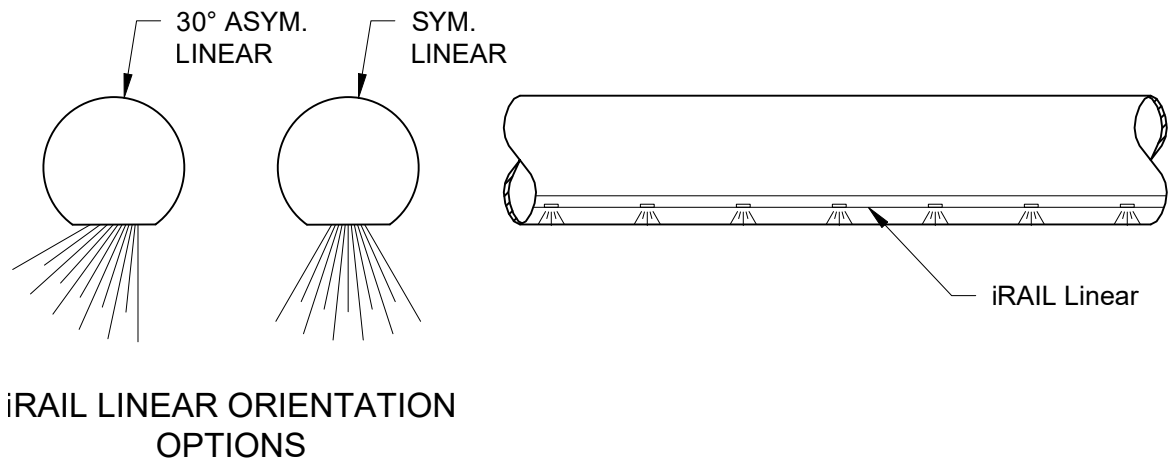
VIVA RAILINGS IS NOT RESPONSIBLE FOR THE STRUCTURAL INTEGRITY OF ANY BUILDING SYSTEMS OR OTHER MATERIALS NOT FURNISHED BY VIVA RAILINGS. VIVA RAILINGS HAS NO WAY OF KNOWING AND SPECIFICALLY DISCLAIMS WHETHER OR NOT THE BUILDING SYSTEMS TO WHICH VIVA RAILINGS' PRODUCTS ARE TO BE ATTACHED ARE STRUCTURALLY SOUND OR DESIGNED TO PROPERLY SUPPORT VIVA RAILINGS'S MATERIALS. ANY SUCH DESIGN RESPONSIBILITY BELONGS TO OTHERS FOR WHOM VIVA RAILINGS IS NOT RESPONSIBLE. THESE DRAWINGS ARE INTENDED FOR THE SOLE USE OF VIVA RAILINGS' CUSTOMER AND THEIR AGENTS FOR THE INSTALLATION OF PRODUCTS FURNISHED BY VIVA RAILINGS. VIVA RAILINGS REMAINS THE SOLE OWNER OF ALL DESIGNS AND INTELLECTUAL PROPERTY CONTAINED WITHIN. REPRODUCTION AND USE OF THESE DESIGNS FOR ANY OTHER PURPOSE IS FORBIDDEN. SCALES ARE PROVIDED FOR REFERENCE ONLY. FOR PRODUCT INFORMATION AND TECHNICAL SUPPORT, PLEASE CONTACT VIVA RAILINGS.





# VISIO RAILING SYSTEM

## ILLUMINATED RAILING



iRAIL LIGHTED RAILING SYSTEM





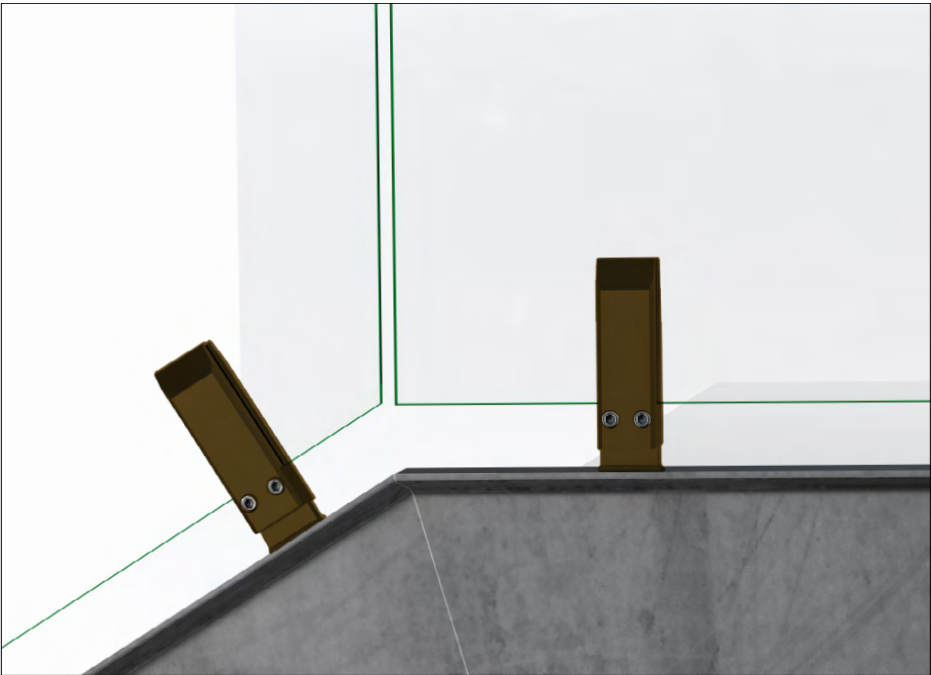
# VISIO GLASS RAILING SYSTEM

## FINISHING OPTIONS

#6 Satin



CeraShield\* Ceramic Coating



Enhanced durability and superior protection.  
Available in a wide range of colors.  
(Replaces traditional powder coat finish options.)

\*VIVA Railings now proudly offers CeraShield Ceramic Coating (powered by CERAKOTE Technology) as our premium finishing option, providing enhanced durability and superior protection for interior and exterior applications. While CeraShield offers unparalleled advantages in hardness, corrosion resistance, UV stability, and chemical resistance, we will continue to offer standard Powder Coat finishes to meet a variety of aesthetic preferences.

Powder Coat\*



Powder coating is an environmentally-friendly option because it doesn't rely on solvents or chemical carriers. Instead, an electrostatic charge holds the paint to the steel, thus eliminating VOC emissions which will help in regards to LEED requirements. In addition, it meets AAMA specifications. Powder coating is durable and scratch resistant so it weathers and retains its original hue better than conventional liquid coatings.\*



<a href="#">POWDER COAT FINISHING OPTIONS</a>
<a href="#">CERASHIELD FINISHING OPTIONS</a>

The digital swatches of our powder coat colors may not accurately represent the actual real-life samples. Factors such as monitor settings, lighting conditions, and individual perception can affect the colors you see on your screen. We suggest using the swatches as a general reference for color, shade, and hue, rather than expecting an exact match. For the most precise color selection, we recommend requesting physical samples or visiting our office in Lewisville, TX to evaluate the powder coat colors in person.

Please note that while we offer a diverse range of standard powder coat colors to complement our products, any selections outside of these standard options may incur additional costs. We encourage you to consult with our specialists to explore all available options and make the best decision for your project needs.





# VISION GLASS RAILING SYSTEM MANOR ISD NEW TECH MIDDLE SCHOOL



MANOR ISD NEW TECH MIDDLE SCHOOL - MANOR, TX  
General Contractor: Joeris General Contractors  
Architect: Stantec Corporation





# VISION GLASS RAILING SYSTEM RICHARD J. LEE ELEMENTARY



RICHARD J. LEE ELEMENTARY - COPPELL, TX  
General Contractor: Balfour Beatty Contractors  
Architect: Stantec Corporation







**DESIGN + ENGINEER + FABRICATE + INSTALL**

**151 W. Vista Ridge Mall Dr. Lewisville, TX 75067**

(Dallas/Fort Worth Metroplex)

PH: 972.353.8482 | [info@vivarailings.com](mailto:info@vivarailings.com)  
[vivarailings.com](http://vivarailings.com)



Inc. Magazine 500 | 5000  
VIVA RAILINGS, LLC.  
Among The Fastest Growing  
US Companies  
Eight Years in a Row  
**2012-2019**



Inc. Magazine 500 | 5000  
VIVA RAILINGS, LLC.  
Among The Fastest Growing  
Texas Companies  
**#211**



ICC-ES 4405 Certified  
**SHOE™**  
Structural Glass Railing System



LEED  
Material & Resources Credits 4.1 and 4.2



The American Institute of Architects



The California Contractors State License  
Board Certified