



VORTEX - AVAILABLE INFILLS

Glass

# VORTEX<sup>TM</sup> GLASS RAILING SYSTEM

## PRODUCT DATA

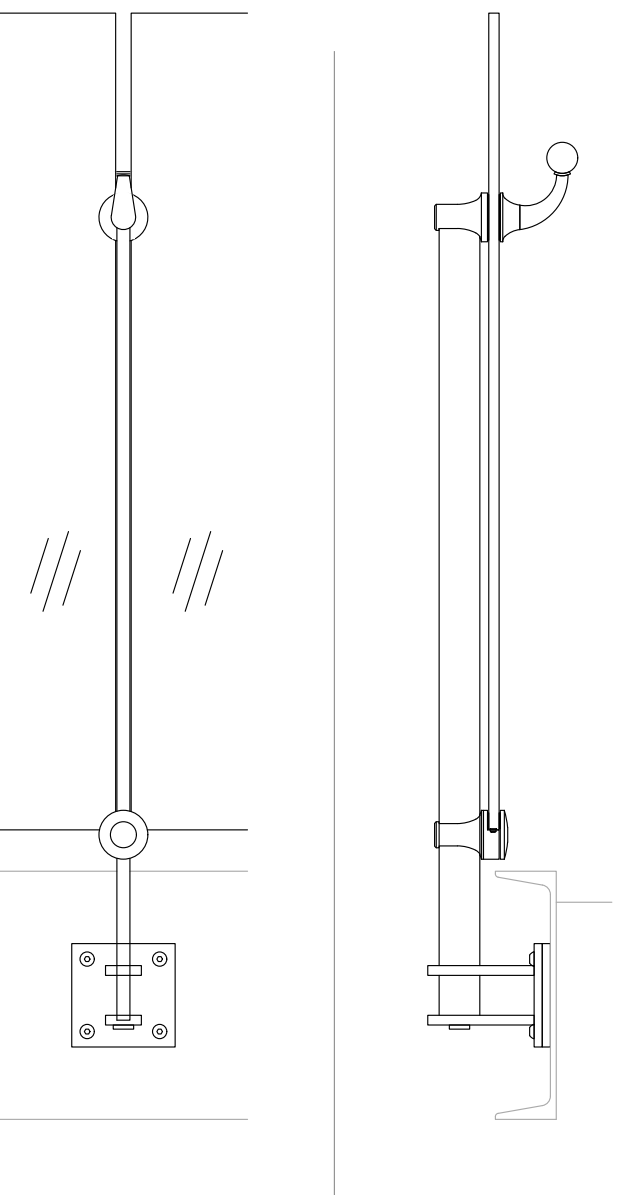


**VIVA RAILINGS**  
LEADERS IN ARCHITECTURAL RAILING SYSTEMS

DESIGN + ENGINEER + FABRICATE + INSTALL



# VORTEX™ GLASS RAILING SYSTEM

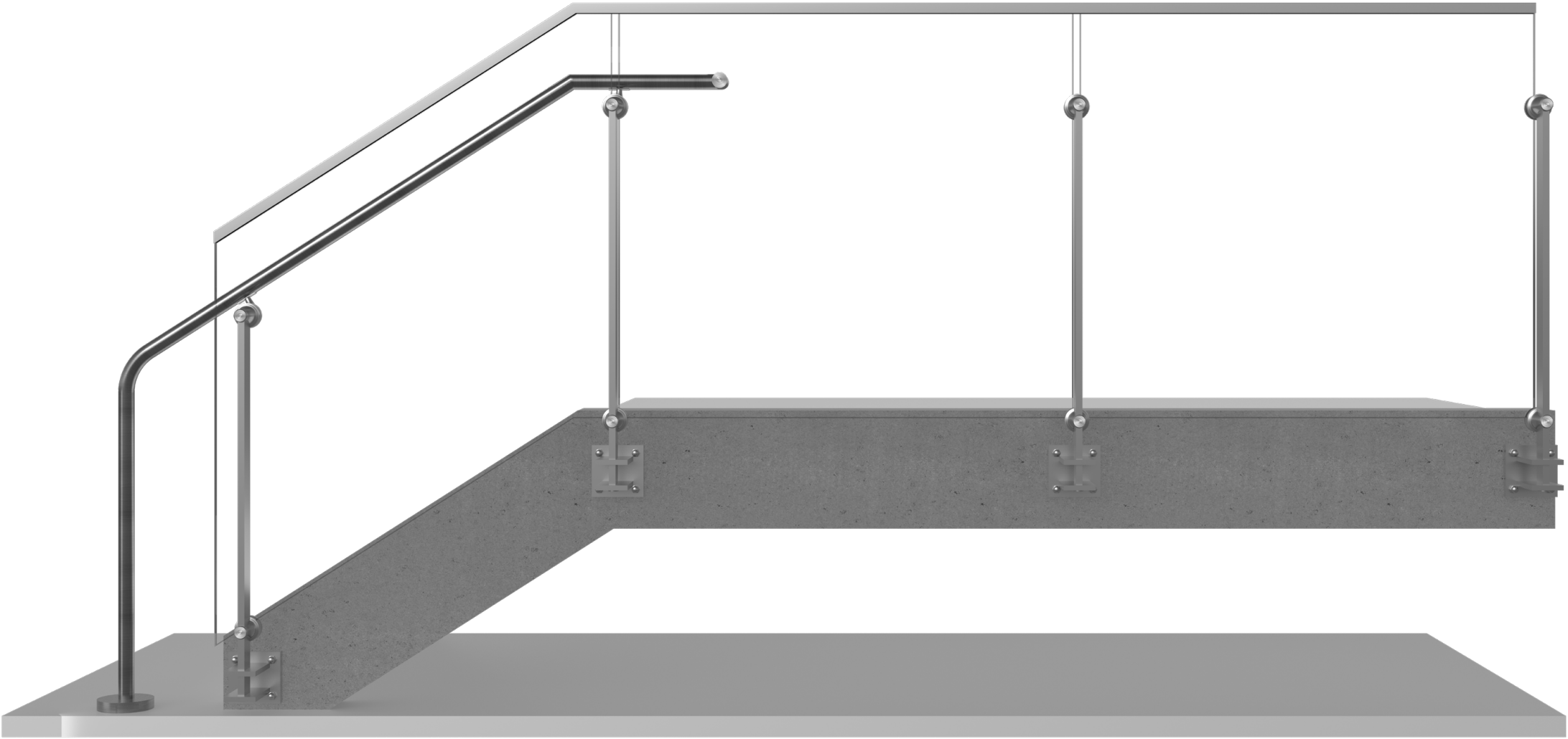


Other mounting options available.

VORTEX - AVAILABLE INFILLS

Glass

VORTEX glass panel railing system from Viva Railings offers a sleek and contemporary design that is perfect for modern architectural projects. The system features a minimalist design with a single bar post and a unique funnel or vortex-shaped conical bracket that sits between the glass panels. This bracket serves a dual purpose, supporting the glass panels and providing a sturdy handrail.



VORTEX™ GLASS SYSTEM - TECHNICAL DATA

	MATERIAL	FINISH	SIZE/SPACING
POST	<div>Stainless Steel (304 or 316)</div> <div>Stainless Steel (201)</div>	<div>#6 Satin</div> <div>Powder Coat</div>	2" Flat bar @ 5'-0" max. O.C. for glass infill
INFILL OPTIONS	Glass with Cone Clamp	Clear, Tinted or Frit	<div>Min. 3/8" laminated glass with PVB or SGP interlayer <sup>1</sup></div> <div>Glass standard thickness: 3/8", 1/2"</div> <div>Interlayer standard thickness, SGP: 0.035" , 0.06"</div> <div>PVB: 0.035"</div>
TOP RAIL/HAND RAIL	<div>Stainless Steel U-Cap</div> <div>Stainless Steel U-Cap with LED <sup>3</sup></div> <div>Stainless Steel Tube</div> <div>Stainless Steel Tube with LED</div> <div>Wood (Red Oak, Cherry or Maple) <sup>2</sup></div> <div>Wood (Red Oak, Cherry or Maple) with LED</div>	<div>#6 Satin, Powder Coat</div> <div>#6 Satin</div> <div>#6 Satin, Powder Coat</div> <div>#6 Satin</div> <div>Unstained</div> <div>Unstained</div>	<div>1" Height U-Cap for Glass Top Rail</div> <div>Ø1-1/2" with LED LINEAR, Ø1-1/2" or Ø2" with LED POD</div> <div>Ø1-1/2" or Ø2" for Hand Rail</div> <div>Ø2" or 2"x1" Rectangular tube for Top Rail</div> <div>Ø1-1/2" with LED LINEAR, Ø1-1/2" or Ø2" with LED POD</div> <div>Ø2"</div> <div>Ø2" with LED LINEAR</div>



Intertek

1. IBC 2015 & newer requires railing glass to be laminated. VIVA recommends SGP for exterior applications.

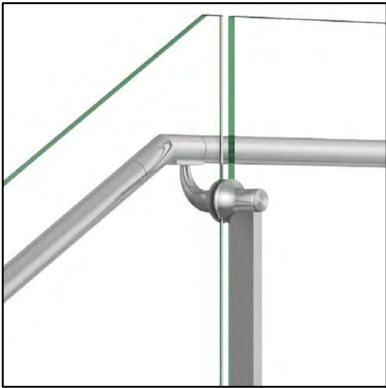
2. Other species available upon request.

3. All LED LINEAR products are ETL certified; ETL mark is proof of product compliance to North American safety standard.

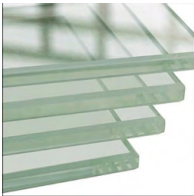


# VORTEX RAILING SYSTEM

## GLASS INFILL



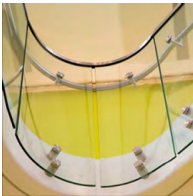
### AVAILABLE GLASS TYPES



Clear Monolithic



Clear Laminated (PVB or SGP)



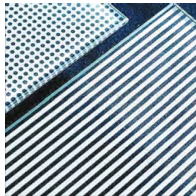
Bent



Tinted



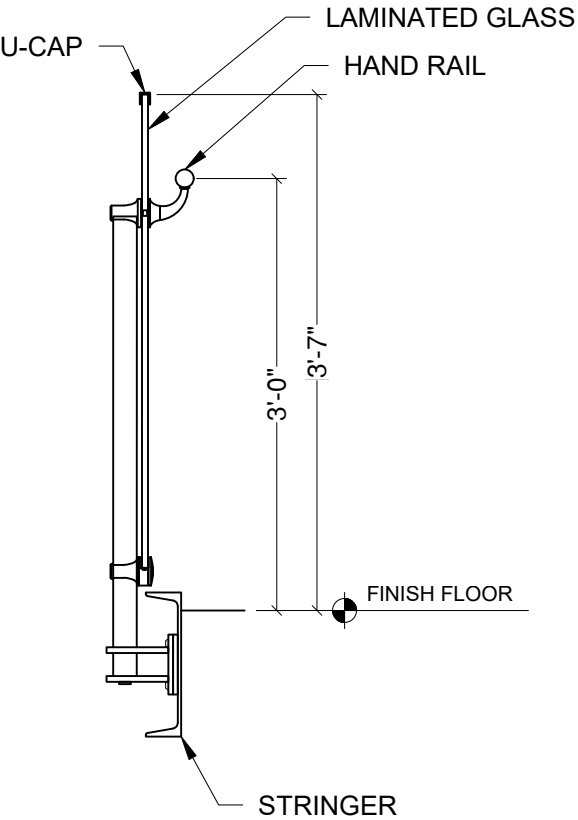
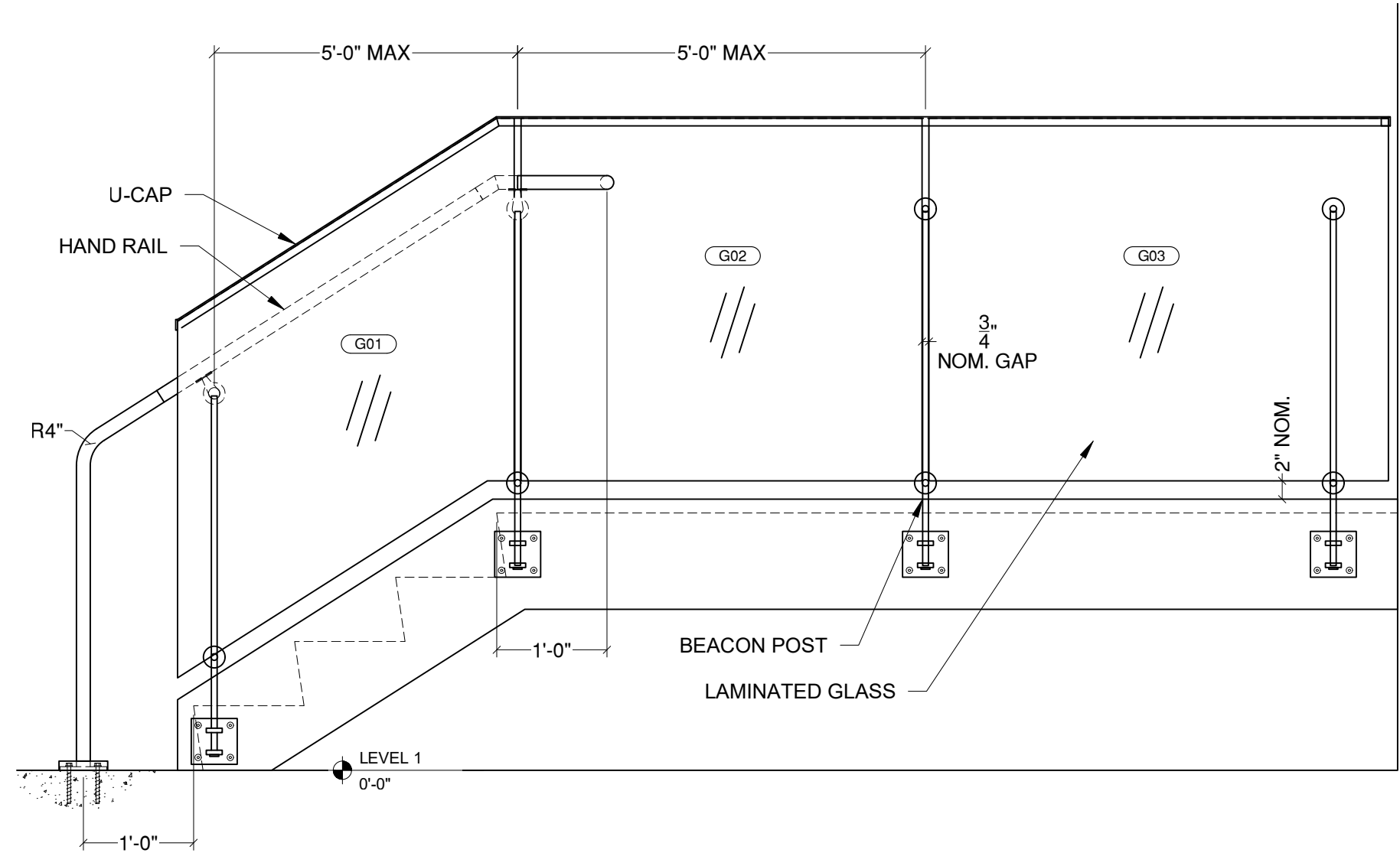
Satin Etched



Ceramic Frit



Colored Laminate (PVB only)

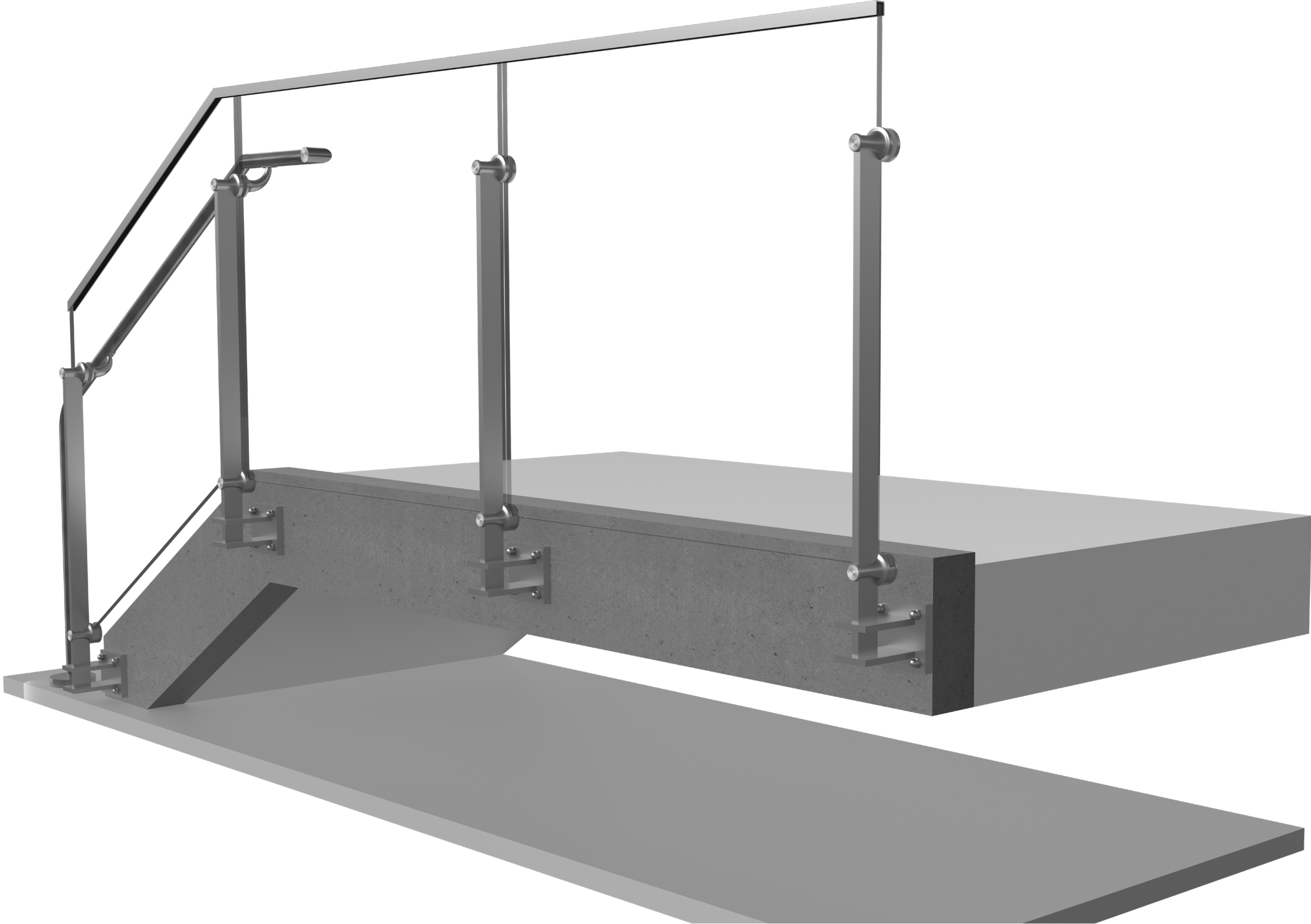


VIVA RAILINGS IS NOT RESPONSIBLE FOR THE STRUCTURAL INTEGRITY OF ANY BUILDING SYSTEMS OR OTHER MATERIALS NOT FURNISHED BY VIVA RAILINGS. VIVA RAILINGS HAS NO WAY OF KNOWING AND SPECIFICALLY DISCLAIMS WHETHER OR NOT THE BUILDING SYSTEMS TO WHICH VIVA RAILINGS' PRODUCTS ARE TO BE ATTACHED ARE STRUCTURALLY SOUND OR DESIGNED TO PROPERLY SUPPORT VIVA RAILINGS'S MATERIALS. ANY SUCH DESIGN RESPONSIBILITY BELONGS TO OTHERS FOR WHOM VIVA RAILINGS IS NOT RESPONSIBLE. THESE DRAWINGS ARE INTENDED FOR THE SOLE USE OF VIVA RAILINGS' CUSTOMER AND THEIR AGENTS FOR THE INSTALLATION OF PRODUCTS FURNISHED BY VIVA RAILINGS. VIVA RAILINGS REMAINS THE SOLE OWNER OF ALL DESIGNS AND INTELLECTUAL PROPERTY CONTAINED WITHIN. REPRODUCTION AND USE OF THESE DESIGNS FOR ANY OTHER PURPOSE IS FORBIDDEN. SCALES ARE PROVIDED FOR REFERENCE ONLY. FOR PRODUCT INFORMATION AND TECHNICAL SUPPORT, PLEASE CONTACT VIVA RAILINGS.





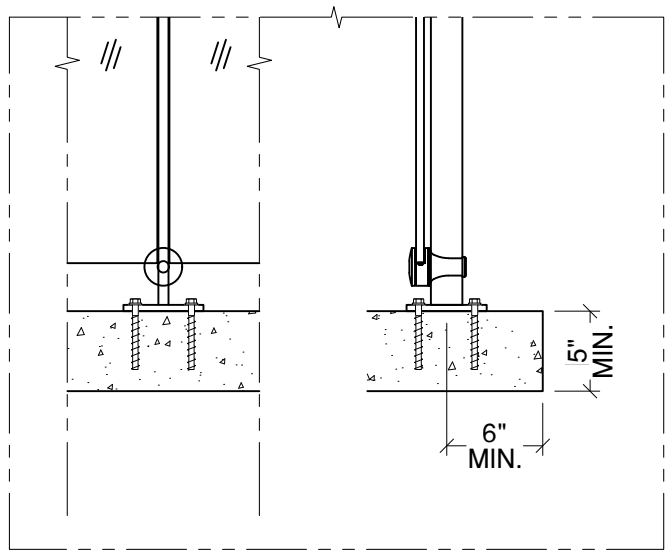
# VORTEX GLASS RAILING SYSTEM





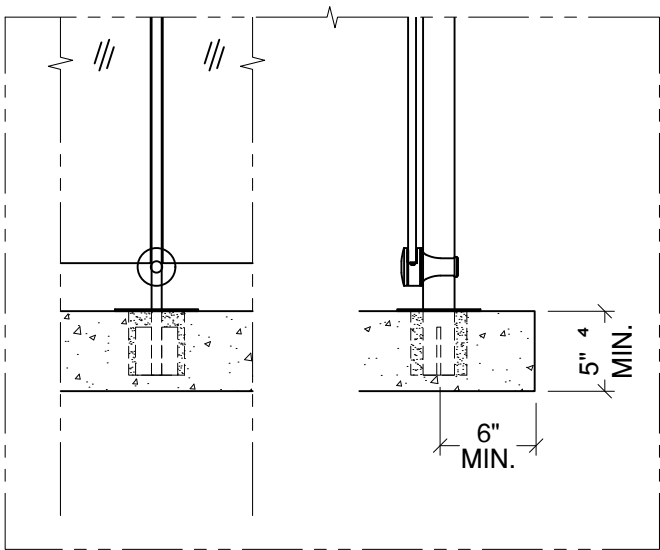
# VORTEX RAILING SYSTEM

## MOUNTING CONDITION, TOP MOUNTED POST



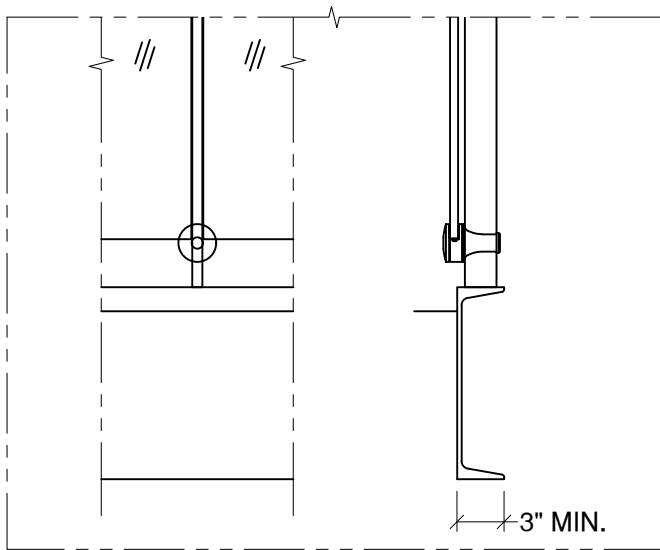
Anchored to Concrete <sup>1</sup> - \$ <sup>2</sup>

Detail# BE-T01 <sup>3</sup>



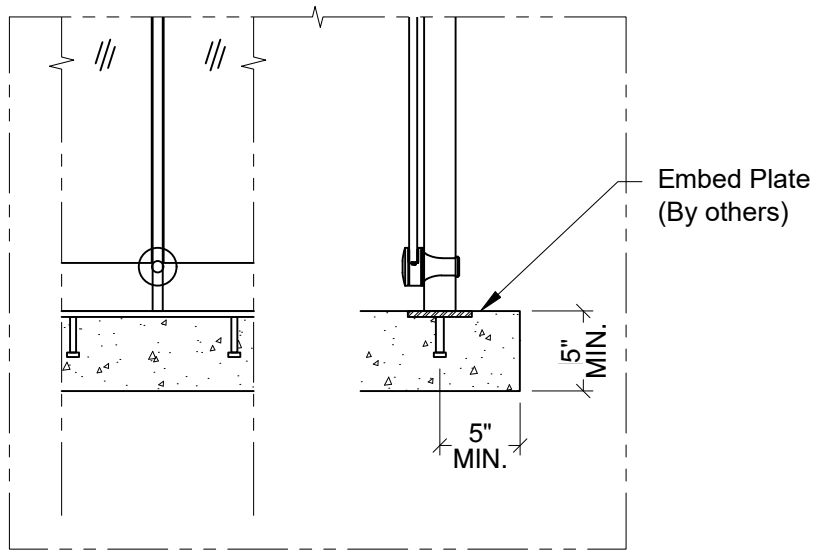
Cored into Concrete - \$\$

Detail# BE-T02



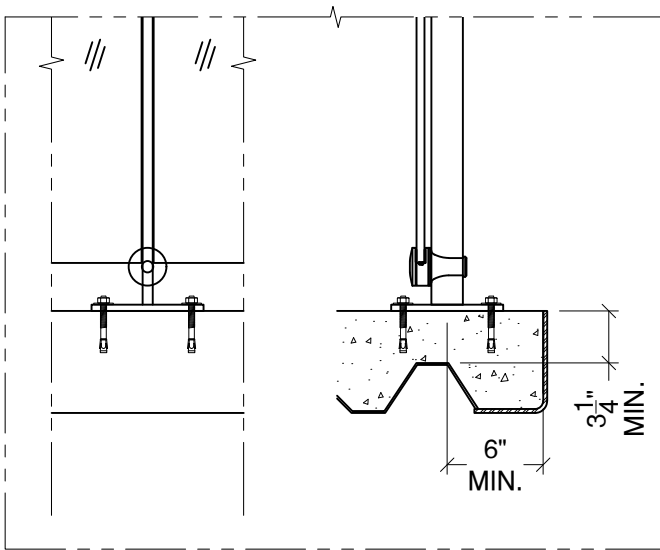
Welded @ Steel Channel - \$

Detail# BE-T03



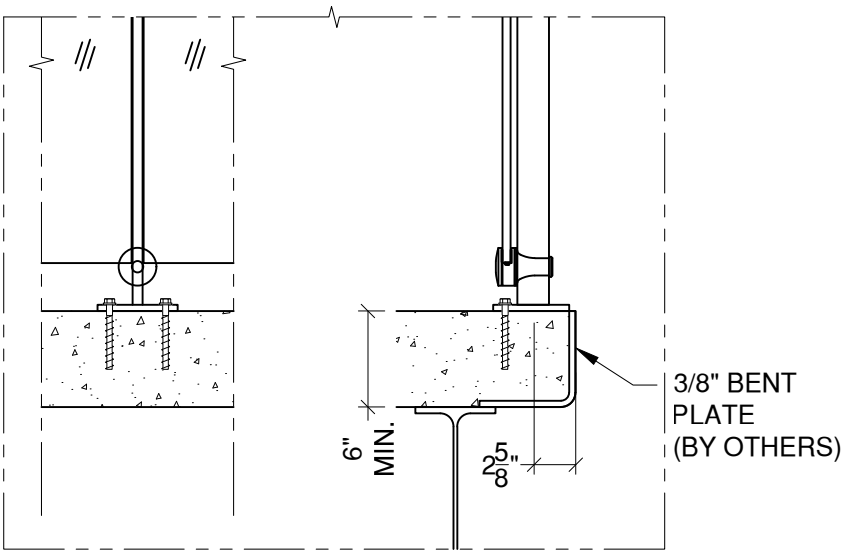
Welded @ Embed Plate - \$

Detail# BE-T04



Anchored to Concrete Slab on Deck - \$\$

Detail# BE-T05



Anchored to Concrete  
Welded to Steel Plate - \$

Detail# BE-T06

- (1) Min. 4000 PSI concrete, Typ.  
(2) \$ to \$\$\$: Indicates mounting type comparative cost  
(3) Anchoring is not an available option for top mount with cable infill  
(4) 6 1/2 inch Min. for end post with cable infill

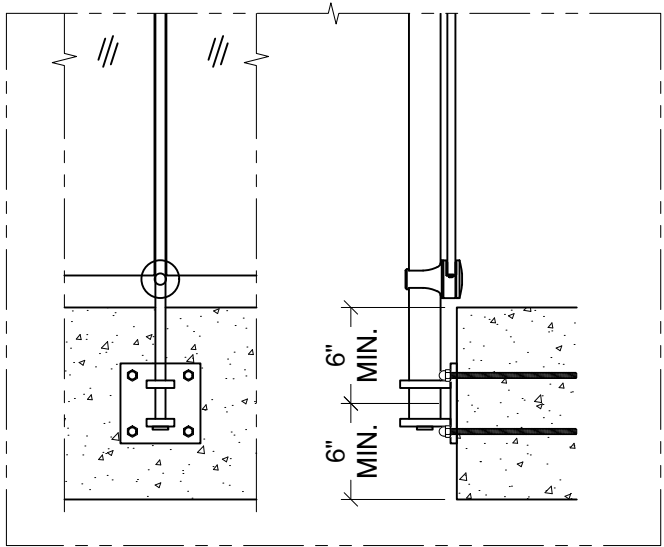
VIVA RAILINGS IS NOT RESPONSIBLE FOR THE STRUCTURAL INTEGRITY OF ANY BUILDING SYSTEMS OR OTHER MATERIALS NOT FURNISHED BY VIVA RAILINGS. VIVA RAILINGS HAS NO WAY OF KNOWING AND SPECIFICALLY DISCLAIMS WHETHER OR NOT THE BUILDING SYSTEMS TO WHICH VIVA RAILINGS' PRODUCTS ARE TO BE ATTACHED ARE STRUCTURALLY SOUND OR DESIGNED TO PROPERLY SUPPORT VIVA RAILINGS'S MATERIALS. ANY SUCH DESIGN RESPONSIBILITY BELONGS TO OTHERS FOR WHOM VIVA RAILINGS IS NOT RESPONSIBLE. THESE DRAWINGS ARE INTENDED FOR THE SOLE USE OF VIVA RAILINGS' CUSTOMER AND THEIR AGENTS FOR THE INSTALLATION OF PRODUCTS FURNISHED BY VIVA RAILINGS. VIVA RAILINGS REMAINS THE SOLE OWNER OF ALL DESIGNS AND INTELLECTUAL PROPERTY CONTAINED WITHIN. REPRODUCTION AND USE OF THESE DESIGNS FOR ANY OTHER PURPOSE IS FORBIDDEN. SCALES ARE PROVIDED FOR REFERENCE ONLY. FOR PRODUCT INFORMATION AND TECHNICAL SUPPORT, PLEASE CONTACT VIVA RAILINGS.





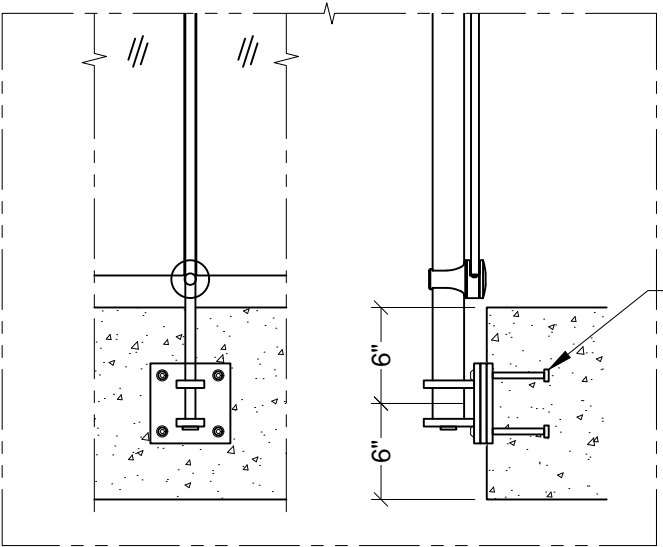
# VORTEX RAILING SYSTEM

## MOUNTING CONDITION, FASCIA MOUNTED POST



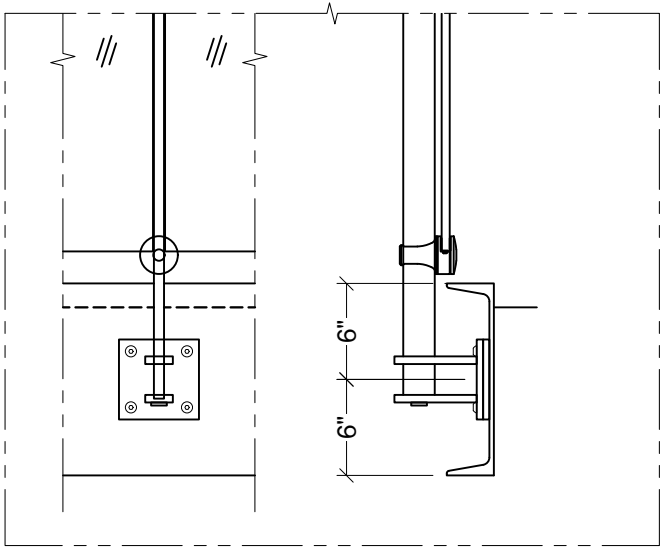
Anchored to Concrete <sup>1</sup> - \$\$\$

Detail# BE-F01 <sup>2</sup>



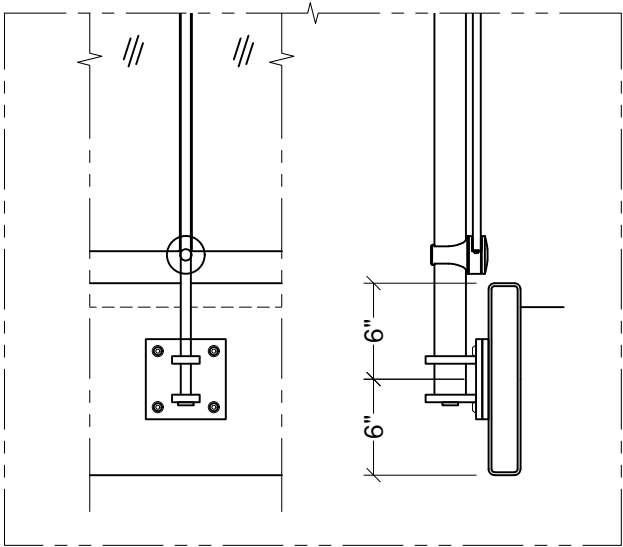
Welded @ Embed Plate - \$\$

Detail# BE-F02



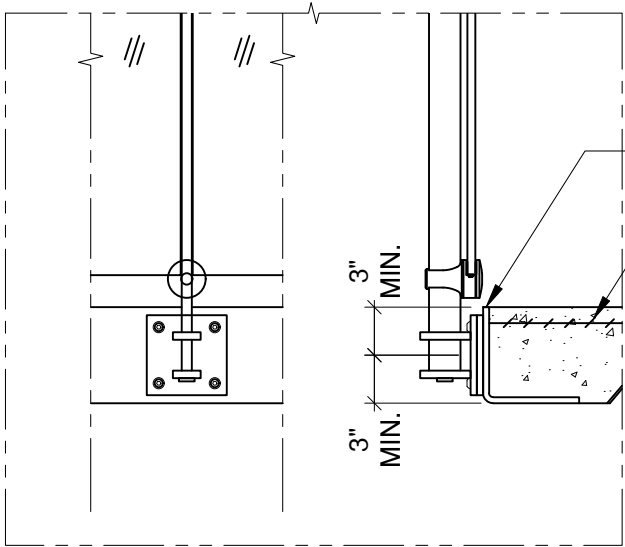
Welded @ Steel Channel - \$\$

Detail# BE-F03



Welded @ Steel Tube - \$\$

Detail# BE-F04



Welded @ Pour Stop - \$\$

Detail# BE-F05

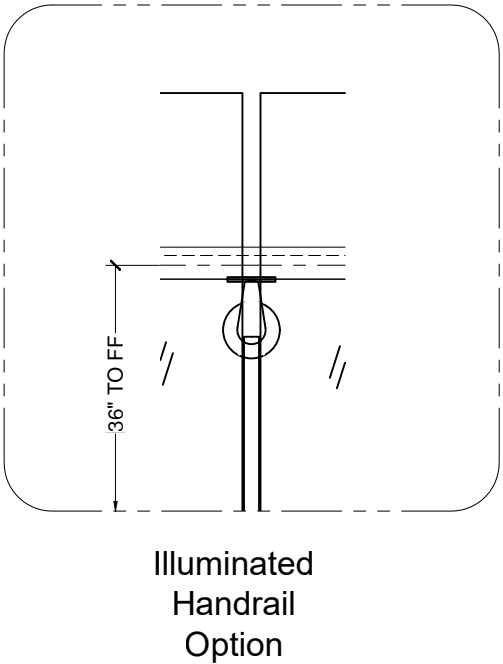
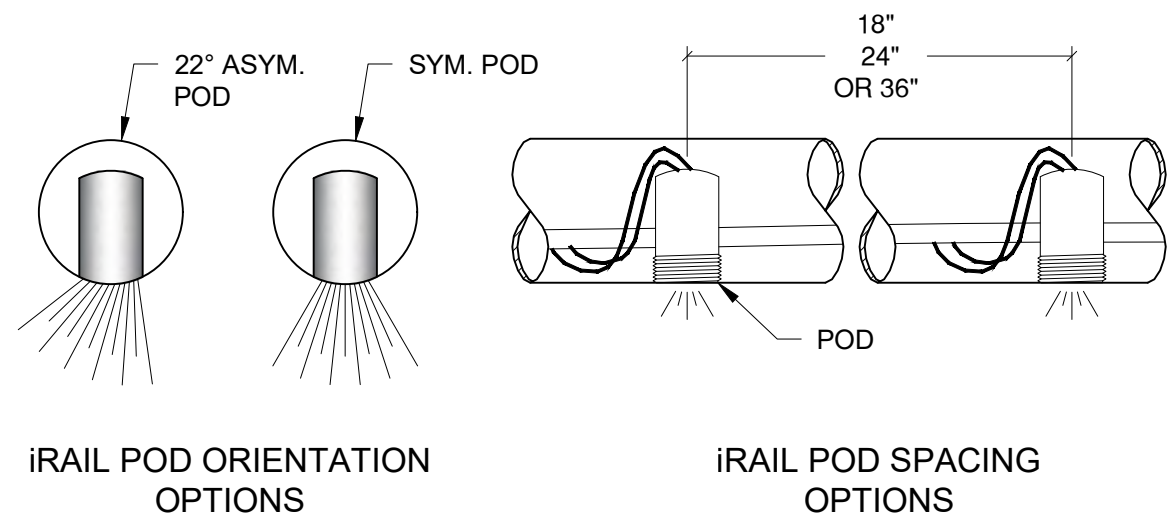
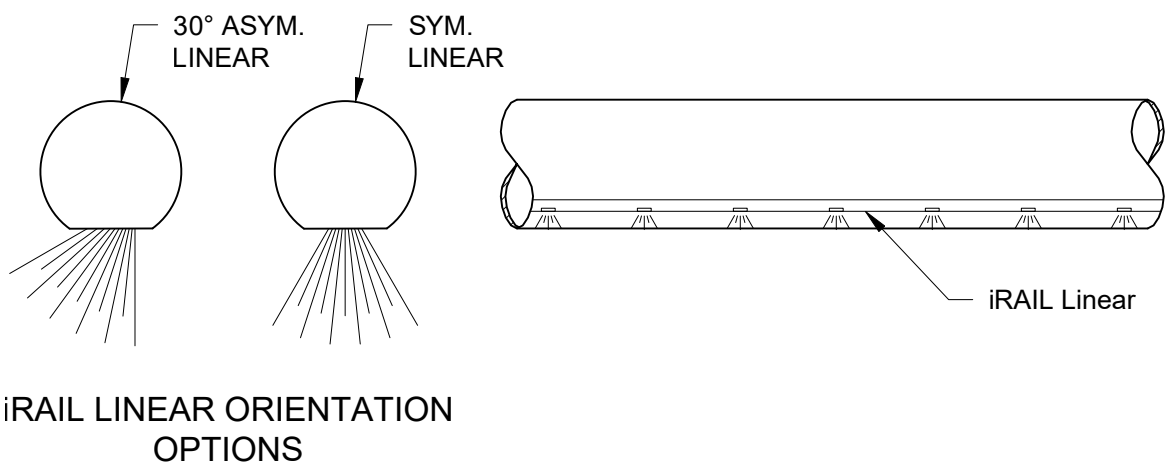
(1) Min. 4000 PSI concrete, Typ.  
(2) Anchoring is not a recommended option for cable infill





# VORTEX RAILING SYSTEM

## ILLUMINATED RAILING



iRAIL LIGHTED RAILING SYSTEM

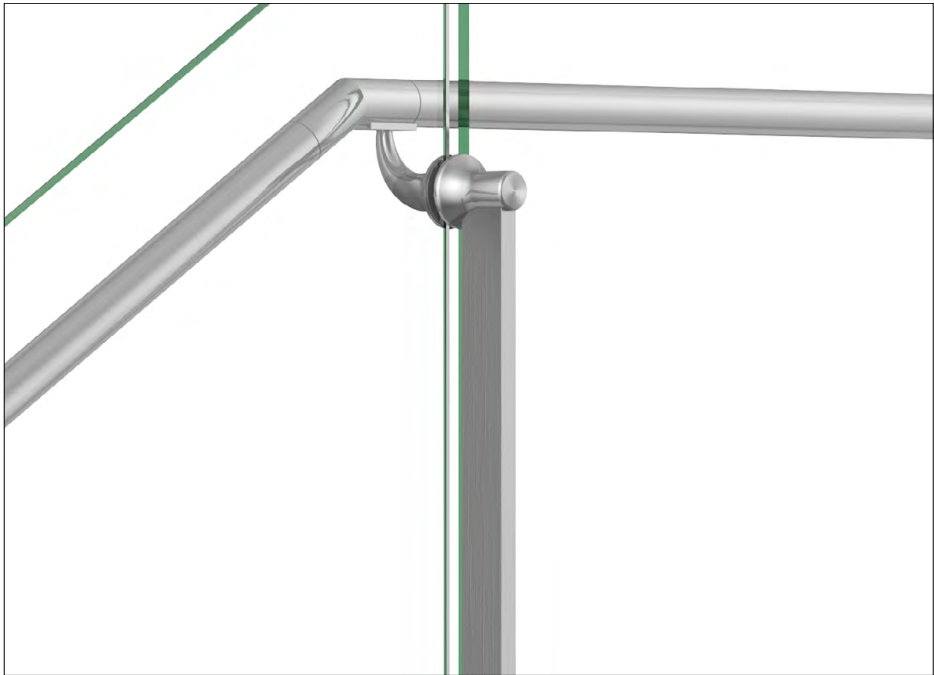




# VORTEX GLASS RAILING SYSTEM

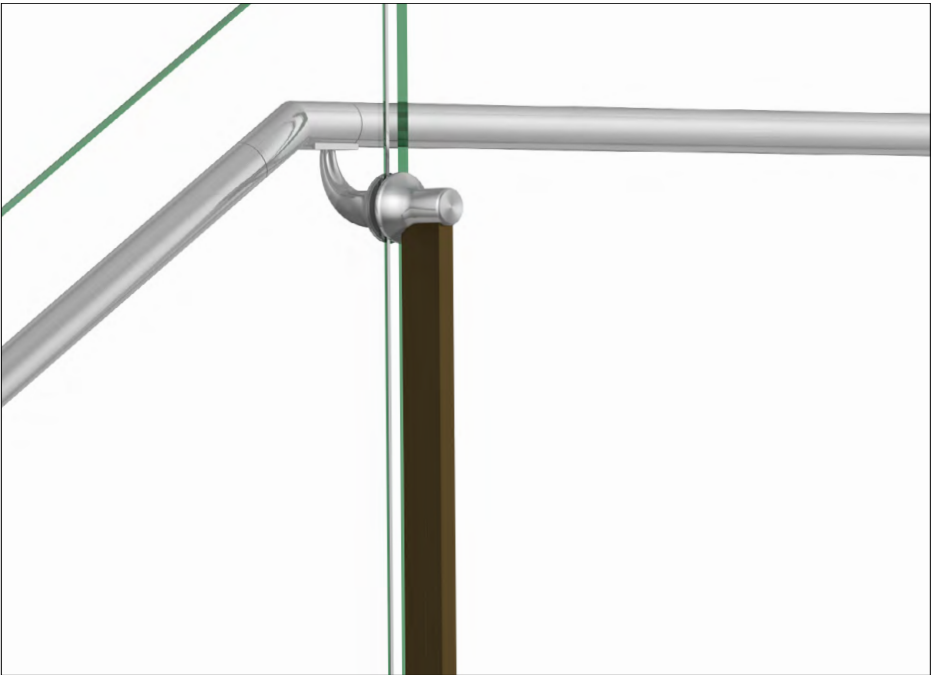
## FINISHING OPTIONS

### #6 Satin



#8 Mirror Finish comes at an additional cost to our #6 Finish.

### CeraShield\* Ceramic Coating



Enhanced durability and superior protection.  
Available in a wide range of colors.  
(Replaces traditional powder coat finish options.)

\*VIVA Railings now proudly offers CeraShield Ceramic Coating (powered by CERAKOTE Technology) as our premium finishing option, providing enhanced durability and superior protection for interior and exterior applications. While CeraShield offers unparalleled advantages in hardness, corrosion resistance, UV stability, and chemical resistance, we will continue to offer standard Powder Coat finishes to meet a variety of aesthetic preferences.

### Powder Coat\*



Powder coating is an environmentally-friendly option because it doesn't rely on solvents or chemical carriers. Instead, an electrostatic charge holds the paint to the steel, thus eliminating VOC emissions which will help in regards to LEED requirements. In addition, it meets AAMA specifications. Powder coating is durable and scratch resistant so it weathers and retains its original hue better than conventional liquid coatings.\*



[POWDER COAT FINISHING OPTIONS](#)

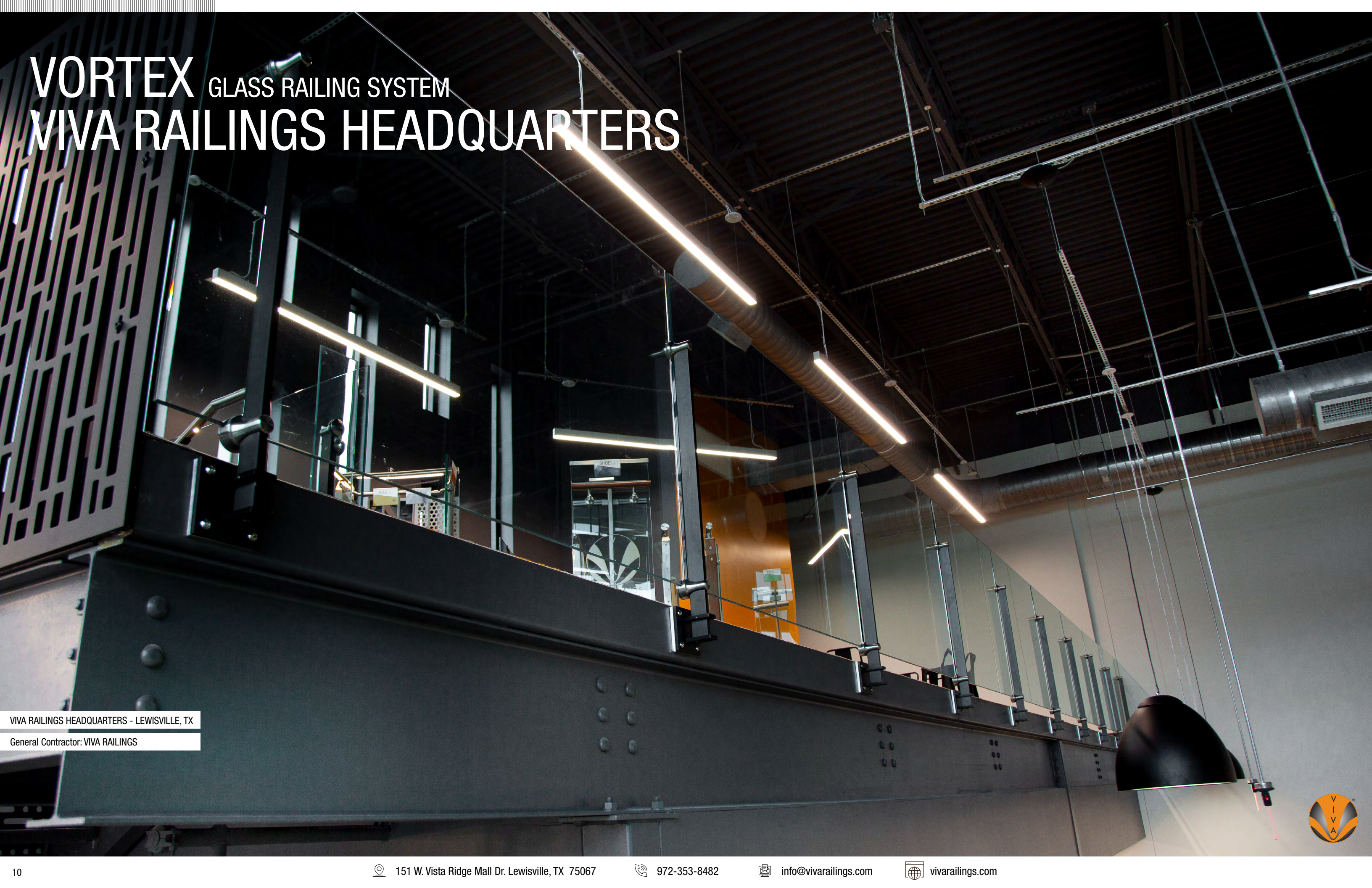
[CERASHIELD FINISHING OPTIONS](#)

The digital swatches of our powder coat colors may not accurately represent the actual real-life samples. Factors such as monitor settings, lighting conditions, and individual perception can affect the colors you see on your screen. We suggest using the swatches as a general reference for color, shade, and hue, rather than expecting an exact match. For the most precise color selection, we recommend requesting physical samples or visiting our office in Lewisville, TX to evaluate the powder coat colors in person.

Please note that while we offer a diverse range of standard powder coat colors to complement our products, any selections outside of these standard options may incur additional costs. We encourage you to consult with our specialists to explore all available options and make the best decision for your project needs.







# VORTEX GLASS RAILING SYSTEM VIVA RAILINGS HEADQUARTERS

VIVA RAILINGS HEADQUARTERS - LEWISVILLE, TX  
General Contractor: VIVA RAILINGS





# VORTEX GLASS RAILING SYSTEM VIVA RAILINGS HEADQUARTERS

VIVA RAILINGS HEADQUARTERS - LEWISVILLE, TX

General Contractor: VIVA RAILINGS







**DESIGN + ENGINEER + FABRICATE + INSTALL**

**151 W. Vista Ridge Mall Dr. Lewisville, TX 75067**

(Dallas/Fort Worth Metroplex)

PH: 972.353.8482 | [info@vivarailings.com](mailto:info@vivarailings.com)  
[vivarailings.com](http://vivarailings.com)



Inc. Magazine 500 | 5000  
VIVA RAILINGS, LLC.  
Among The Fastest Growing  
US Companies  
Eight Years in a Row  
**2012-2019**



Inc. Magazine 500 | 5000  
VIVA RAILINGS, LLC.  
Among The Fastest Growing  
Texas Companies  
**#211**



ICC-ES 4405 Certified  
**SHOE™**  
Structural Glass Railing System



LEED  
Material & Resources Credits 4.1 and 4.2



The American Institute of Architects



The California Contractors State License  
Board Certified