

02

# Cleaning & Janitorial



Cleaning & Janitorial

Hygiene and Toilet Rolls  
Cleaning Products  
Mops and Buckets

Brushes  
Floor Care  
Washroom Systems

Handcare Products  
Dust Control  
Miscellaneous

# Cleaning & Janitorial Contents

<b>405</b>	Introduction	<b>460</b>	Cleaner/Polish
<b>406</b>	Rolls & Towels	<b>461</b>	Air Freshener/Deodoriser
<b>414</b>	Paper Systems	<b>463</b>	Dishwashing
<b>418</b>	Wipes	<b>464</b>	Washing
<b>420</b>	Rags	<b>467</b>	E:dose
<b>421</b>	Hand Cleaners	<b>470</b>	Floor Cleaners
<b>432</b>	Sanitising Wipes	<b>476</b>	Sacks & Bags
<b>436</b>	Gojo/Purell	<b>477</b>	Waste Bins
<b>446</b>	Hand Sanitiser	<b>486</b>	Window Cleaning
<b>450</b>	ECA Water	<b>491</b>	Dust beaters
<b>451</b>	Decontamination	<b>492</b>	Mopping
<b>452</b>	Detergent	<b>502</b>	Brushware
<b>453</b>	Disinfectant	<b>518</b>	Vehicle Cleaning
<b>458</b>	Toilet Cleaner	<b>520</b>	Catering & Disposable



# Cleaning & Janitorial

## Cleaning & Janitorial Introduction

This section of our catalogue holds a certain special value to Tower Supplies, as this product range is where it all kicked off. Our current Managing Director who is also the company founder started off selling paper products, and the breadth of this catalogue gives you an idea of what we have achieved in the past 35 years.

Even in this product range we have expanded and are now able to supply virtually anything from the mighty ride-on scrubber drier, to the humble hand-towel and the oh so essential toilet roll. Some of the brands we supply include Tork, Gojo, Prochem, Rubbermaid, Numatic, Victor, Innu-science amongst many others.

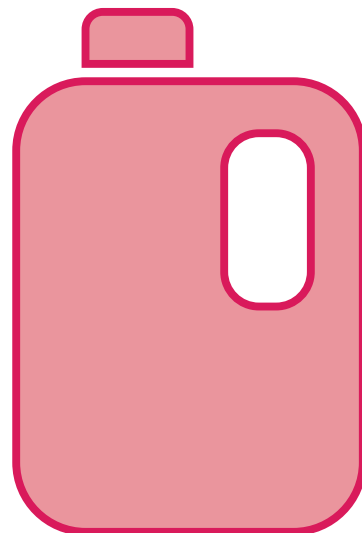
With innovation as one of our key values, some of the products available in our paper, soap & skin care systems, and our janitorial & floor care ranges are up there with the most advanced products. Nevertheless, don't be put off if all that innovation and 'techy stuff' sounds a bit scary. These products help some of our largest customers, but just as much, they help our local customers who have been with us for years, and provide the solid bread and butter that every company needs.

Oh, and if you're from the local area i.e. Poole, Dorset, we would love to see you in our Trade Counter where you can draw off the wealth of expertise we have in our Trade Counter manager. With a range of cleaning chemicals and products enough to make a contract cleaners dream, we should have something for you. And don't limit it to chemicals – if you would like to see some of our cleaning machines in action before you make the investment (which we totally understand), we would love to arrange a demo for you – just give us a shout.

Another thing we should mention, is that as you are all aware, the environment has suddenly become more important to everyone (it was never unimportant, but with anything, when you start losing it, it takes on a new value to you). As you go through this catalogue, you will notice that some of our products have the 'Green Tick'. This signifies that they are some of the environments best friends. They do a sterling job without harming the environment, meaning that you as a user and beneficiary of these products can go through every day knowing you are doing your bit to preserve this good old earth for years to come. And it doesn't stop there - we're constantly on the hunt to find products that are even more agreeable to the environment (think back to the bit about innovation.)

If you've read through this and thought "where in the world do I start with re-looking at my cleaning and janitorial situation", fear not. Get in touch with our amazing sales team. We would love to come and see you and arrange site surveys or training for your staff to ensure that you get the maximum out of every millilitre of cleaning chemical, or every second out your mops. We are here to Make Your Workplace a Better Place.

So, all that's left is for you to read on, and we look forward to hearing from you soon.



01

**2 ply toilet rolls 200sh white, soft**

2 ply Conventional Toilet Rolls. White 100% recycled.  
Sheet - 112mm L x 95mm W.  
200 sheets/roll,  
2 rolls/pack,  
18 packs/case,  
96 cases/pallet.

Code L01.SP200



02

**Whisper Soft white toilet tissue**

2 ply 'Whisper' Soft Luxury Toilet Roll. White Non-recycled. Laminated Embossed.  
Sheet - 110mm L x 103mm W.  
Roll - 23.1mL.  
40 rolls/case, 30 cases/pallet.

Code L01.SP400



03

**2 ply luxysoft toilet rolls 240sh white, soft**

2 ply Conventional Toilet Rolls. White 100% recycled.  
Sheet - 104mm L x 120mm W.  
240 sheets/roll,  
4 rolls/pack,  
10 packs/case,  
30 cases/pallet.

Code L01.SP21432



04

**2 ply toilet rolls 320sh white, soft**

2 ply Toilet Roll. White.  
Sheet 120mmL x 95mm W.  
320 sheets/roll, 4 rolls/pack,  
9 packs/case, 72 cases/pallet.

Code L01.SP320



05

**Micro Mini Toilet Roll**

White 2 ply. 24 Rolls.  
125m x 90mm x 347sheet

Code L04.MT102



06

**2 ply jumbo toilet rolls**

2 Ply Jumbo Toilet Roll. White 100% recycled.  
6 rolls/case, 42 cases/pallet.  
3" Core - 410m L x 92mm W and 76mm

Code L04.JT002



07

**2 ply mini jumbo toilet rolls**

2 ply Mini Jumbo Toilet Roll. White 100% recycled.  
12 rolls/case, 50 cases/pallet.

2.5" Core - 200m L x 92mm W and 62mm

Code L04.JT005

3" Core - 200m L x 92mm W and 76mm

Code L04.JT006



08

**2 ply midi toilet rolls**

2 ply Midi Jumbo Toilet Roll.  
White 100% recycled.  
250m L x 92mm W and  
76mm (3" core).  
6 rolls/case,  
70 cases/pallet.

Code L04.JT007

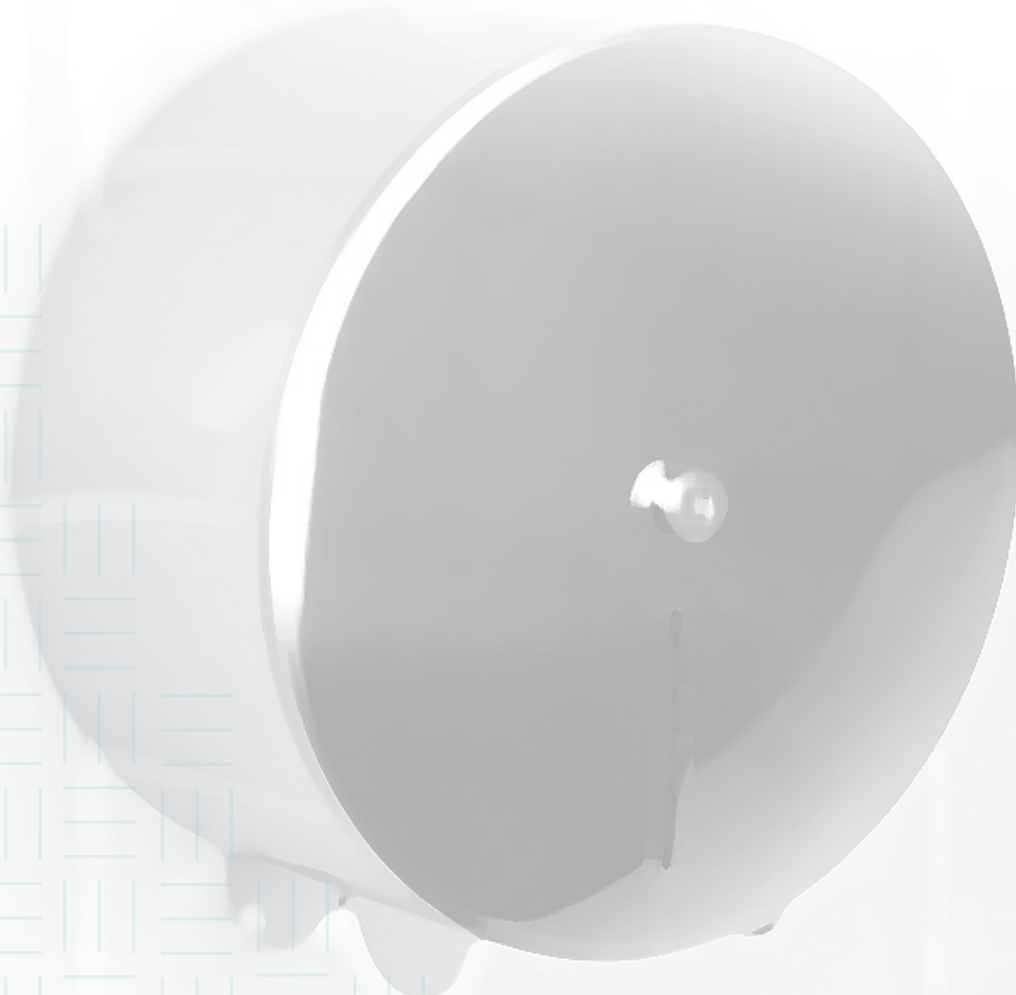


09

**2 ply bulk toilet tissue white, soft**

2 ply Bulk Pack Toilet Tissue. White.  
Pure - not recycled.  
108mm x 195mm.  
36 sleeves/case,  
50 cases/pallet.  
250 Sheets per Sleeve

Code L03.SF002



01

**Embossed c-fold towel, 2 ply, deluxe. White**

2 ply C-fold white hand towel. 50% recycled.  
310mm x 225mm. 157 towels/sleeve,  
15 sleeves/case, 64 cases/pallet.

Code **L05.HT004-WH**



02

**Embossed c-fold towel Deluxe. Green**

1 ply embossed C-fold green hand towel. 15 sleeves/case,  
64 cases/pallet. consequat.

172 Towels per Sleeve

Code **L05.HT001**

197 Towels per Sleeve

Code **L05.HT002**



03

**Bulkysoft V-fold HP Trim Hand Towels. White**

2 ply V-fold white hand towel. 4000 towels/case.

Code **L05.84550**



04

**Hand Towels 1 ply V-fold Green recycled 40gsm**

1 ply green hand towels. 40 g/m2 Recycled.  
Embossed & laminated.  
5000 towels/case.

Code **L05.HT007E**



05

**Hand Towels 20.5x24cm, Z-fold. White**

2 ply Z-fold white hand towel. 65% recycled.  
315mm x 215mm. 180 towels/sleeve, 15 sleeves/case.

Code **L05.SP27501**



06

**1 Ply Embossed interleaved green H/Towels**

1 Ply Interleaved green hand towel. 100% recycled.  
242mm x 222mm. 180 towels/sleeve,  
20 sleeves/case,  
64 cases/pallet.

Code **L05.HT007**



07

**2 ply mini c/feed rolls 60m white**

2 Ply White Mini Centrefeed Rolls. 100% recycled. 197mm x 65m. 12 rolls/case, 50 cases/pallet.

Code L06.ST102



08

**1 ply standard centrefeed rolls 300m blue**

1 ply centrefeed rolls. 100% recycled. 300m L x 197mm W. 6 rolls/case, 50 cases/pallet.

Code L06.ST002



09

**3 ply standard centrefeed rolls 150m blue**

3 ply centrefeed rolls. Blue. 100% recycled. 150m L x 197mm W. 6 rolls/case, 50 cases/pallet.

Code L06.ST005



10

**2 ply standard centrefeed rolls 150m**

2 ply centrefeed rolls. 100% recycled. 150m L x 197mm W. 6 rolls/case, 50 cases/pallet.

White  
Code L06.ST003

Blue  
Code L06.ST004



01

**2ply maxi roll 240m white**

2 ply Wiper Roll. White. Recycled.  
Sheet - 395mm L x 260mm W.  
Roll - 222m L. 2 rolls/case, 70 cases/pallet.

**Code L06.MA006**

02

**Rolls Wiper (TORK SERVOIL) blue**

Wiper 430 2 ply Blue  
heavy duty paper roll.  
Roll size - 340m L x 37cm  
W. 1 roll/case. 18 cases/pallet.

**Code L07.130070**

03

**Boss Wiper 2Ply blue**

2 ply Blue Embossed Wiper  
Roll. Nokia Blue Recycled.  
Sheet - 395mm L x 260mm  
W. Roll - 230m L. 2 rolls/case,  
56 cases/pallet.

**Code L07.SP21226**

04

**Katrin Classic 3 Ply Wiper roll 1000sh blue**

Katrin Classic XXL 3 ply wiper/hand  
drying roll. Blue. 1000 sheets.  
Sheet size - 380mm W x 380mm L.  
30 cases/pallet.

**Code L07.SP27385**

05

**2 ply wiper roll 1000sh blue, width 40cm**

2 Ply Blue Wiper Roll.  
100% recycled.  
Sheet - 400mm W x 370mm L.  
Roll - 400m L. 1 roll/case,  
60 cases/pallet.

**Code L07.WR003**

06

**3 ply wiper roll 1000sh blue, width 40cm**

3 Ply Maxi Wiper Roll. 1000sh.  
Sheet size - 38cm L x 37cm W.  
Roll length - 380m. 1 roll/case,  
36 cases/pallet.

**Code L07.WR005**

07

**2 ply wiper roll 1000sh**

2 Ply Wiper Roll. 100% recycled.  
Roll - 400mL. 1000 sheets.  
2 rolls/case, 42 cases/pallet.

White - 370mm L x 280mm W  
**Code L07.WR006**

Blue - 260mm W x 365mm L  
**Code L07.WR007**



08

**Deluxe wiper rolls blue**

Deluxe high-absorbency wiper roll typically used in sensitive  
and demanding wiping environments. Glued and embossed.  
Deluxe Wiper Rolls. 3 ply Blue. 500 sheets. (x2)

**Code L07.WR053**

09

**Heavy towel rolls 76m 200mm wide (x16)**

1 Ply Embossed heavy duty green hand towel roll. 200mm x 70mm. 16 rolls/case.

Code L05.HT010

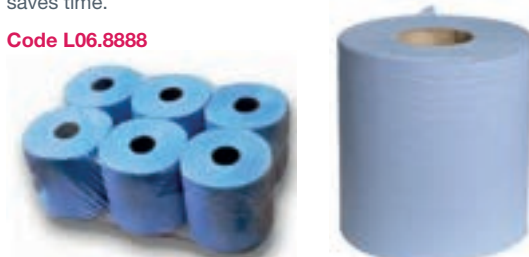


10

**2 ply Performance Blue Roll 20cm x 304m (x6)**

2 ply high capacity wiper, ideal for all hygienic environments. It's Quick absorption of liquids increases efficiency and saves time.

Code L06.8888



11

**Dispenser Tork wall stand wiper combi Steel Colour**

Tork wall stand high capacity dispenser. Wall mounted. Red and smoke colour and constructed of metal and plastic. 463mm H x 646mm W x 274mm D.

Code L16.217010



12

**Floorstand dispenser with cutter blade**

A freestanding robust, practical floor dispenser for industrial drying rolls. Simple and easy to use, and can easily be relocated as necessary. Roll width 40cm. Colour: Blue metal. Dimensions - 900mm H x 460mm W x 440mm D.

Code L16.WRD1



13

**Floorstand with cutter blade mobile - Black**

Floorstand dispenser with wheels for wiper roll. Metal.

Code L16.WRD2



**Wiper Roll Guide**

Code	Colour	Ply	Width (mm)	Sheet length (mm)	Roll length (m)	Description
L06.MA006	White	2	260	395	222	Bumper Roll
L07.130070	Blue	3	370	340	340	Tork Heavy Duty Wiping
L07.SP21226	Blue	2	260	395	230	Boss Wiper
L07.SP27385	Blue	3	380	380	380	Katrin Classic Industrial
L07.WR003	Blue	2	370	365	400	Perform Bumper Roll
L07.WR005	Blue	3	370	380	380	Maxi Roll
L07.WR006	White	2	260	365	400	Perform Bumper Roll
L07.WR007	Blue	2	260	365	400	Perform Bumper Roll
L07.WR053	Blue	3	260	500	150	Bulkysoft Wiper
L05.HT010	Green	1	200	Continuous	76	Embossed Heavy Duty Roll
L06.8888	Blue	2	200	Continuous	304	Perform Blue Roll

01

**2 Ply Hygiene Rolls 125sh White**

This product is typically used in the healthcare profession for patient tables and beds. It is very popular with dentists, doctors, and nursing & care homes and is available in 50cm and 25cm widths.

50cm x 9 Rolls  
Code L08.MW010

25cm x 18 Rolls  
Code L08.MW020



02

**3 Ply Hygiene Rolls 90sh Blue**

This product is typically used in the healthcare profession for patient tables and beds. It is very popular with dentists, doctors, and nursing & care homes and is available in 50cm and 25cm widths.

50cm x 12 Rolls  
Code L08.MW030

25cm x 24 Rolls  
Code L08.MW040



03

**2 Ply Hygiene Rolls 100sh Blue**

This product is typically used in the healthcare profession for patient tables and beds. It is very popular with dentists, doctors, and nursing & care homes and is available in 50cm and 25cm widths.

50cm x 12 Rolls  
Code L08.MW050

25cm x 18 Rolls  
Code L08.MW060



04

**Premium Hygiene Rolls**

Premium quality couch rolls for Medical and Healthcare use. Pure white in colour this is an absolute must for the discerning practitioner.

50cm - 9 Rolls  
Code L08.MW015

25cm - 18 Rolls  
Code L08.MW025



05

**2 Ply Professional Tissues 100sh White**

Great value pack for use by professionals in a variety of environments, from bedside tables to day rooms and dining rooms. Ideal for placing in any room, waiting room or bedroom.

48 Boxes  
Code L09.PP001



06

**Luxysoft Facial Tissues**

Luxysoft 2 ply facial tissues. 200mm x 210mm. 90 shts/box, 36 boxes/case, 40 cases/pallet. Typically used in the hospitality sector to prevent the spread of colds and other winter bugs.

36 Boxes  
Code L09.SP23548



07

**Bulkysoft facial tissues**

100% Cellulose. 2 ply. Cloth size: 21 x 21 cm. PEFC & Ecolabel certified. Dermatologically tested. 40x100 sheets per case.

40 Boxes  
Code L09.68100



08

**Bulkysoft Cube Tissues**

2 Ply White facial tissues. Mixed Design. 205mm x 205mm. 90 shts/box, 24 boxes/case. Dermatologically tested.

Code L09.SP23550



09

**Classic 10" Roll White Paper Towel Dispenser**

Sturdy durable 10" White Powder Coated Paper Towel Dispenser. Suitable for a wide range of locations. Built in serrated edge. Locking mechanism. Suitable for perforated or non-perforated paper. W.288 x H. 159 x D. 165mm Weight 1.4kg.

Code L16.MMD1-10



10

**Plastic Lockable Dispenser for C/fold and M/fold**

The Modular hand towel dispenser is a hard-wearing, versatile system that enables the distribution of interleaved, C-fold, Z-fold and extra-narrow towels. It is available in two sizes to fit your environment.

Small

Code L16.HTD1-S

Large

Code L16.HDTD1



11

**Plastic Mini/Jumbo Lockable Dispenser**

The integrated reversible spigot enables the use of different roll-core diameters which increase the amount of application possibilities. Suitable for perforated and non-perforated paper with effortless restocking

Lockable Jumbo Dispenser

Code L16.JTD1

Lockable Mini Jumbo Dipenser

Code L16.JTD2



12

**Bulk Pack Lockable Dispenser**

Popular in small washrooms, the bulk pack toilet paper dispenser benefits from a sturdy & compact design, while promoting high-standards of hygiene in the washroom.

Code L16.SFD1



13

**Lockable Dispenser, holding 3 toilet rolls**

White Powder Coated Stainless Steel toilet paper dispenser w/locking mechanism. Stores up to 3 rolls. 125.5mm W x 399mm H x 127mm D. 1.9kg. 100 dispensers/pallet.

Code L16.SP2



14

**Mini Centre Feed Lockable Dispenser**

Space-saving and easy to restock, this centrefeed dispenser has been designed for areas that require fast access to paper towels. The hard-wearing centrefeed dispenser will stand up to years of constant use in busy environments. It is available in two sizes (small or large) to fit your needs.

Code L16.STD1



15

**Standard Centre Feed Lockable Dispenser**

Space-saving and easy to restock, this centrefeed dispenser has been designed for areas that require fast access to paper towels. The hard-wearing centrefeed dispenser will stand up to years of constant use in busy environments. It is available in two sizes (small or large) to fit your needs.

Code L16.STD2



16

**Twin Mini Jumbo Dispenser**

Quality, high impact material. Lockable. Core size diameter 21/4. No waste system – only one roll accessed at a time. All rolls are used completely – no wasted stub rolls, giving up to 30% paper saving. Made in England

Code L16.BC594



01

**Tork SmartOne Toilet Tissue Dispenser**

The Tork SmartOne Toilet Roll Dispenser in Elevation Design is a modern efficient dispensing system suitable for demanding washrooms with high traffic. The sheet-by-sheet dispensing helps to reduce consumption by up to 40% when compared to traditional jumbo roll dispensers, which means more visits per roll. Tork Elevation dispensers have a functional, modern design that makes a lasting impression on your guests.

White

Code **L16.294020-WH**

Black

Code **L16.294020-BK****Tork SmartOne Toilet Rolls White (x6)**

The Tork SmartOne Toilet Roll System (T8) uniquely delivers one hygienic sheet at a time, helping to reduce consumption by up to 40% compared to traditional jumbo roll dispensers, which means more visits per roll. Tork SmartOne extra high-capacity rolls are suitable for demanding washrooms with high traffic. The high-capacity single-sheet dispensing roll saves maintenance time and ensures that paper is always available. Quick disintegration and reduced consumption minimizes the risk of expensive pipe blockages. Soft tissue with high brightness and the Tork leaf print for a good image. SmartCore® core removal – for fast and easy refilling. Tork Easy Handling™ Carry Packs are durable, effortless to handle, and reduce waste.

Code **L04.297490**

02

**Tork SmartOne Mini Toilet Tissue Dispenser**

The Tork SmartOne Mini Toilet Roll Dispenser in Elevation Design is an efficient and very robust dispensing system suitable for demanding washrooms with low to medium traffic. The sheet-by-sheet dispensing helps to reduce consumption by up to 40% when compared to traditional jumbo roll dispensers, which means more visits per roll. Tork Elevation dispensers have a functional, modern design that makes a lasting impression on your guests.

White

Code **L16.472025-WH**

Black

Code **L16.472025-BK****Tork SmartOne Mini Toilet Rolls White (x12)**

The Tork SmartOne Mini Toilet Roll System uniquely delivers one hygienic sheet at a time, helping to reduce consumption by up to 40% compared to traditional jumbo roll dispensers, which means more visits per roll. Tork SmartOne Mini high-capacity rolls are suitable for demanding washrooms from low to medium to high traffic, depending on which Tork SmartOne Mini dispenser is chosen.

Code **L04.2974920**

03

### Tork Twin SmartOne Mini Toilet Tissue Dispenser

The Tork SmartOne Twin Mini Toilet Roll Dispenser in Elevation Design is an efficient and very robust dispensing system suitable for demanding washrooms with high traffic. By holding two rolls and sheet-by-sheet dispensing, consumption is reduced by up to 40% when compared to a traditional jumbo roll dispenser which means more visits per roll. Tork Elevation dispensers have a functional, modern design that makes a lasting impression on your guests.

The single-sheet dispensing helps to reduce consumption by up to 40%. It is hygienic because guests only touch the paper that they use. It has an extremely robust design with a metal key and lock that protects the roll and stops theft. Extra high capacity saves maintenance time and ensures that paper is always available. The twin roll dispenser allows rolls to be used to the end, minimising the stub roll waste

White

Code L16.682000

Black

Code L16.682010



04

### Tork Twin Coreless Mid-Size Toilet Tissue Dispenser

The Tork Twin Coreless Mid-size Toilet Roll Dispenser is ideal for medium to high traffic washrooms with a high focus on guest satisfaction. It ensures high efficiency and that toilet paper is always available for guests by holding up to nine times more paper than two conventional toilet rolls.

White

Code L16.502225-WH

Black

Code L16.502225-BK



### Tork Toilet Rolls 2ply Compact White (x24)

The Premium Tork Soft Coreless Mid-size Toilet Roll offers a superior look and feel with the right performance.

Code L04.SP20651



05

### Versatwin Toilet Tissue Dispenser

360m 1 ply capacity. 250m 2 ply capacity. One roll used at a time. Infinity paper system. Bio Kleen™ treated transfer handle. 21 x 32.4 x 14.6 cm (H x W x D).

Blue

Code L16.DSTA06

Silver

Code L16.DSTS06

White

Code L16.DSTW06



06

### Versatwin 2 ply white toilet tissue rolls (x24)

2 ply Versatwin toilet roll. 125m length, 90mm width. 24 rolls per case. 3,000m per case. 100% recycled.

Code L01.JT81SW



01

**Torkmatic Hand-Towel Roll Dispenser White**

The Tork Matic® Hand Towel Roll Dispenser in Elevation Design delivers easy maintenance to keep busy washrooms functioning and reduces consumption with one-at-a-time sheet dispensing. Tork Elevation dispensers have a functional, modern design that makes a lasting impression on your guests. The high capacity serves more customers with fewer rolls. Easy maintenance with the LED level indicator that shows when a refill is needed. Effortless cleaning and intuitive refilling saves time.

**Code L16.551000****Torkmatic Hand-Towel Roll. Premium Soft 2ply White (x6)**

Great for image washrooms, the Premium Tork Matic® hand towel rolls are soft with a nice blue-leaf décor embossing. It dries hands quickly and thoroughly thanks to the QuickDry™ feature. The rolls are suitable for the Tork Matic® Hand Towel Roll Dispenser, developed for easy maintenance in high-traffic washrooms. It saves time and controls consumption by one-at-a-time sheet dispensing.

**Code L05.290016****Torkmatic Advanced Hand-Towel Roll Soft 2ply (x6)**

The blue Advanced Tork Matic® hand towel rolls are food contact approved, which makes this hand towel roll ideal for wash stations in food environments.

White

**Code L05.290067**

02

**Tork Xpress Multi-fold Hand-Towel Dispenser**

The Tork Xpress® Multi-fold Hand Towel Dispenser in Elevation Design is suitable for environments that demand both comfort and hygiene. This slim, attractive dispenser reduces consumption and waste with one-at-a-time dispensing. Tork Elevation dispensers have a functional, modern design that makes a lasting impression on your guests. Good hygiene as guests only touch the towel used. Bundles can be topped up easily to avoid paper run-outs. Hassle free maintenance due to overflow protection for easy refilling.

**Code L16.552000****Tork Xpress Hand-towels Interfold Premium Soft 2ply**

A large, soft hand towel with a high-quality feel that leaves a lasting impression. QuickDry™ – our strongest, most absorbent paper, for more efficient drying with less waste. Multi-folded for one at-a-time dispensing to reduce consumption and improve hygiene. Attractive Tork Leaf décor: designed to make a great impression. Tork Easy Handling Carry Packs for easier carrying, opening and package disposal.

**Code L05.100288****Tork Xpress Hand-towels Interfold Premium Extra Soft 2ply**

Extra soft version of the L05.100288.

**Code L05.100297**

03

**Lotus enMotion Touchless Hand Towel Dispenser**

Maintain a hygienic environment in any washroom or kitchen, with this hands free towel dispenser from Tork. This innovative and attractive dispenser gives out a sheet when a hand is passed in front of the sensor, reducing the risk of cross contamination as well as reducing towel waste. The sensor has different time delay and proximity settings, allowing you to customise the dispenser to suit your washroom needs. Requires 4 x standard D batteries (not included).

**Code L16.K90000****Tork Hand-towel System for Electric Dispenser Blue 24.7cm (x6)**

The blue paper is traceable, thus increasing safety in food preparation. The long roll reduces maintenance and saves time. Fits in the blue and white 24.7cm electronic dispenser.

Blue

**Code L05.J90226**

White

**Code L05.J90227**

White 2ply

**Code L05.K90225**

04

**Leonardo Control Roll dispenser - Smart Sensor**

240m capacity. No-touch sensor dispensing. Programmable sheet length. Towel 'in' or 'out'. Stub-roll transfer. Battery operated. 41.9 x 29.8 x 23.5cm (H x W x D).

**Code L16.DSROB9****Leonardo Control Roll dispenser - Manual**

240m capacity. Controlled sheet length. Towel 'in'. Bio Kleen™ treated handle. Stub-roll transfer. 41.9 x 32.9 x 23.5cm (H x W x D).

**Code L16.DSRA12****Control Roll Hand Towel Blue (x6)**

1ply blue roll towel. For general workplace drying use. 197mm width. 6 rolls per case. 100% recycled.

1ply 200m length

**Code L05.RTB200**

2ply 150m length

**Code L06.SP25078**

# PROWIPE



Portable  
Dispenser  
Box



## The Benefits of Non-Woven Wipes

- Low-linting
- Strong and durable
- Excellent absorption speed and capacity
- Ideal for a wide range of industrial cleaning requirements from mopping up spillages to critical area cleaning in an engineering environment.
- Solvent and chemical resistant - will not fall apart in use.

## Prowipe Dispenser Box for demanding professionals

- Made with premium low-linting Sontara material
- 2 Types of material - Depending on requirements
- Soft texture - Ideal for cleaning delicate surfaces and machinery
- Productivity - Designed to provide ultimate cleaning efficiency
- Safety - Cloths are neatly maintained to minimise risk of contamination
- Design --Strong, sturdy, lightweight and splash proof - ideal for cleaning and wiping on the move
- Easy to Clean - Maintain the life of the Prowipe Box by wiping down after use
- Wall Mountable - Supplied with a bracket to easily affix the box to the wall.

For further information please call or email our helpful sales team on 01202 71800 or [sales@towersupplies.com](mailto:sales@towersupplies.com)

01

**ProWipe**

Prowipes Smooth 51gsm Dispenser Box (x200). Premium wiping cloth, ideal for critical cleaning & technical wiping.

White Code L17.PR100      Turquoise Code L17.PR300

Wall Bracket for ProWipe Box.

Code L17.PR050



02

**Creped Sontara wipes 400sh blue, width 30cm**

Wipextra turquoise creped wipes. 77gsm. Sheet size - 30cm x 33cm. 400 sheets/case, 56 cases/pallet.

Code L17.SW011



03

**Wipextra turquoise z-fold**

Wipextra turquoise, Z-fold 30 x 38cm, first quality. 150 sheets/carton, 132 cartons/pallet.

Creped - 77gsm  
Code L17.SW024

Flat - 73gsm  
Code L17.SW025



04

**Sontara Basic Soft White. 5kg**

Bewisoft +/- 40 x 60cm, flat packed in a box. Basic Soft. 5kg box. 36 boxes/pallet.

Code L17.SW036



05

**Flat Sontara rolls 400sh blue, width 27cm**

Sontara® Turquoise Smooth Premium Wiping cloth on a perforated roll. Sheet size - 28cmW x 38cmL. 400 sheets/roll, 2 rolls/case, 60 cases/pallet.

Code L17.SW001.1



06

**Sontara Basic Soft Blue/Turquoise. 5kg**

Bewisoft +/- 40 x 60cm, flat packed in a box. Basic Soft. 5kg box. 36 boxes/pallet.

Code L17.SW035



07

**Wiper 2Ply Boss wipes Blue**

3ply Blue Embossed Karrywipe centrefeed rolls in Carrybox. 100% Recycled. Sheet: 148mm L x 255mm W. 2 rolls/case, 48 cases/pallet.

Code L12.NW008



08

**Tack Wipes 10s Non Woven Low Linting (10x20)**

Aqua Tack Cloths low linting. Individually wrapped 10 cloths/box.

Code L17.TK001

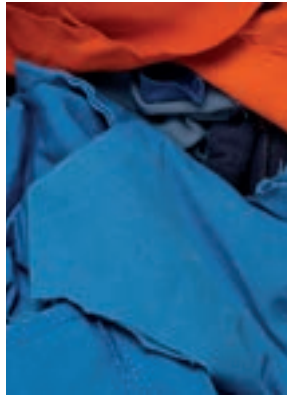


01

**Non Select Rag**

Non-Select rag.  
Case

Code **L14.RW010**



02

**White Wipe Rag**

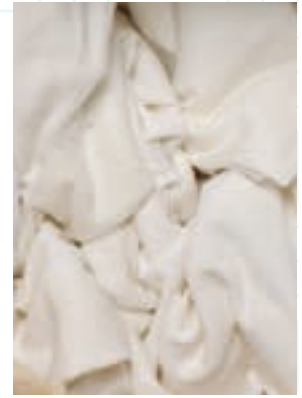
White Rag, 100% Cotton.

Case

Code **L14.RW030**

Vacuum packed - 10kg

Code **L14.RW030VP**



03

**Select Cotton Rag**

Select Cotton rag.

Case

Code **L14.RW020**

Vacuum packed - 10kg

Code **L14.RW020VP**

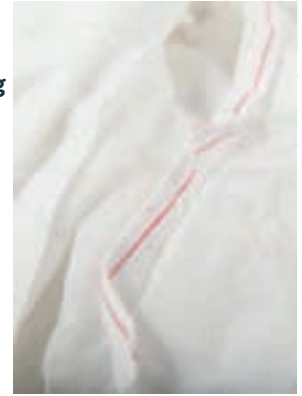


04

**White Cotton Sheeting**

White Sheeting, 12.5kg,  
100% Cotton.

Code **L14.RW040**



05

**White T-Shirt Rag**

White T-Shirt Rag, 10kg.

Code **L14.RW060-WH**

**Mixed T-shirt Rag**

T-shirt Rag, 10kg.

Code **L14.SP20637**

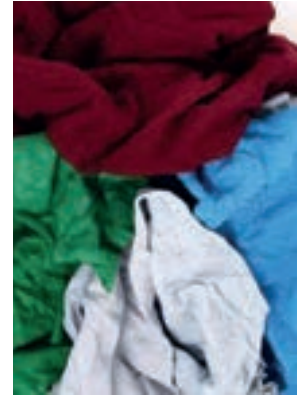


06

**Sweatshirt Rag**

Sweatshirt Rag, 10kg.

Code **L14.RW021**

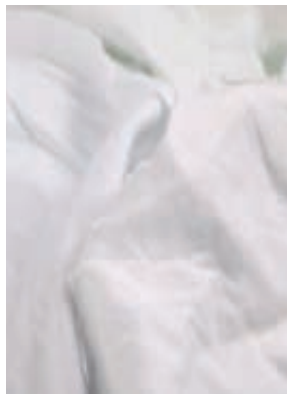


07

**Bleached Hoisery**

Bleached hoisery, 10kg.

Code **L14.RW050**



08

**Terry Towelling**

White Bathrobes Rag, 10kg.

Code **L14.RW090**



09

**Tea Towel**

Tea Towel Rag, 10kg.

Code **L14.SP21985**



10

**Swarfega hand cleanser**

Original green gel hand cleaner with added conditioner. Has the cleaning performance normally associated with products containing scrubbing agents. Smooth gel formula makes it easy to apply and rinse off with no residue. Effectively removes heavy soiling from the skin. Suitable for frequent daily use. Mild citrus fragrance.



1L x 6

Code M03.H0054

11

**Swarfega Heavy**

Heavy duty gel formula hand cleanser containing non-abrasive micro-polymer granules and added conditioner to quickly remove deeply ingrained oil and grease soilings. Advanced gel formulation makes it easy to apply & rinse off with no residue. For use at the end of each work period, or more frequently if required, to quickly and effectively dissolve oil, grease and heavy soiling. Mild citrus fragrance.

15L

Code M03.H0059

4L

Code M03.H0058



12

**Swarfega Dispenser 4L**

Swarfega® hand cleanser  
4 litre dispenser

Code M03.DS400



13

**Swarfega Orange 4L Refill**

Advanced formulation, solvent-free heavy duty hand cleanser containing non-abrasive scrubbers for a deep-down cleaning action and moisturiser to help care for the skin. Removes ingrained oil, grease and general grime.

Code M03.DSS054



14

**Swarfega Lemon 15L**

Solvent free lemon hand cleaner combining highly developed surfactant cleaning agents with non-abrasive, natural cornmeal hand scrub. For use at the end of each work period, or more frequently if required, to effectively remove oil, grease, adhesives and some paints. Mild citrus fragrance. Contains moisturiser to help care for skin. 15 litre tub.

4L

Code M03.SPP60FPA

15L

Code M03.H0063



15

**Swarfega Heavy Duty 4L Refill**

Heavy duty gel formula hand cleanser containing non-abrasive micro-polymer granules and added conditioner to quickly remove deeply ingrained oil and grease soilings. Advanced gel formulation makes it easy to apply & rinse off with no residue. For use at the end of each work period, or more frequently if required, to quickly and effectively dissolve oil, grease and heavy soiling. Mild citrus fragrance.

Code M03.DS010



deb  
stoko



## SKIN PROTECTION CENTRE PROTECT

Pre-work skin protection creams help protect the skin against contact with various workplace contaminants, irritants and working conditions. They also help make the skin easier to clean.

01

### Stokoderm UV30

Stokoderm UV30 Suncream. High protection against UVB 30, UVA, and UVC radiation. Water resistant.

1000ml refill

Code M03.SUNIL.1

12 x100ml

Code M03.SUN100ML



02

### Travabon Classic

Travabon Classic Skin protection ointment for oily and water-insoluble workplace substances.

100ml

Code M31.20854

1000ml x 9

Code M31.22325



03

### Stokoderm Aqua

Stokoderm Aqua Sensitive cream. Skin protection against water-based substances and for regeneration.

100ml

Code M31.24663

1000ml

Code M31.24666



04

### Stokoderm Frost, skin protect cream, 100ml tube

Stokoderm Frost, skin protect cream, 100ml tube (x1). Skin Protection Cream when working in low temperatures.

Code M31.32968



05

### Stokoderm Universal

Stokoderm Universal hand protection cream (x1). Unique all-in-one skin protection with natural film former and moisturizer.

Code M31.85554 100ml

Code M31.85552 1000ml



06

### Stokoderm Protect PURE

Stokoderm® Protect PURE Universal perfume-free, non-greasy pre-work skin cream to help protect against contact with water and non-water based contaminants including dry powders.

1000ml refill

Code M03.DS002

12 x100ml

Code M03.DS003





## SKIN PROTECTION CENTRE **CLEANSE**

Appropriate cleansing of the hands plays a vital part in preventing occupational dermatitis. Using the right cleansers will help with removing dirt and irritants while keeping the skin in a healthy condition

07

### **Stoko Refresh Wash. Foam**

Stoko Refresh Wash. Foam. The creamy and fine-pored hand wash foam nourishes the skin with aloe vera. Perfect, top-of-the-line skin cleansing thanks to its superior quality care substances. Awarded with the EU Ecolabel.

1000ml

Code M31.34995

500ML

Code M31.34993



08

### **Estesol hair&body 2000ml (x6)**

Estesol hair&body 2000ml (x6). 2 in 1 shower gel for your body and hair with a fresh unisex scent.

Code M31.29126



09

### **Estesol classic 2000ml (x6)**

Estesol classic 2000ml (x6). Liquid skin cleanser for light skin cleansing. With conditioner and has a gentle fresh scent.

Code M31.83503



10

### **Estesol mild wash 2000ml (x6)**

Estesol mild wash 2000ml (x6). Creamy, special skin cleanser for light skin cleansing. Perfume-free.

Code M31.82543



11

### **Estesol Lotion PURE Refill**

Estesol® Lotion PURE Refill - Perfume-free and dye-free light duty lotion hand cleanser for regular use to remove general dirt and grime.

2L

Code M03.DS004

4L

Code M03.DS006



12

### **Estesol Orange Lotion Refill**

Translucent 'citrus zest' lotion hand cleanser. Based on coconut oil to produce a rich, creamy lather. Contains glycerine to moisturise the skin and help prevent dryness.

2000ml refill

Code M03.DOP.2

4000ml refill

Code M03.DOP.1



01

**Solopol Lime refill**

Solopol Lime refill - Petroleum solvent-free hand cleanser with Deb's patented combination of natural cornmeal and light lime extracts. Natural, non-abrasive and biodegradable cornmeal scrubbers give a deep clean without damaging the skin or harming the environment. Contains glycerine and wheatgerm extract to moisturise and condition the skin.

**Code M03.DS008** 2L

**Code M03.DS0105** 4L



02

**Solopol Hand Cleaning Paste 2000ml (x6)**

Solopol Classic Hand Cleaning Paste 2000ml (x6). Traditional hand cleanser with time-proven cleaning system for heavy-duty skin cleansing.

**Code M31.33282**



03

**Kresto paint**

Kresto paint. Special hand cleanser for paints, resins and other very stubborn contamination.

2000ml Soft Bottle x 6

**Code M31.81907**



04

**Solopol strong 2L (x6)**

Solopol strong 2L (x6). Hand cleanser for extra-heavy-duty skin cleansing with scrubbing agent.

**Code M31.33257**



05

**Kresto Citrus**

Kresto Citrus - Patented combination of natural orange oil extracts and cornmeal scrubbing agent to provide a highly effective cleansing performance. Contains moisturisers to help keep skin soft and supple. Works quickly to remove a wide range of ingrained and difficult to remove contaminants.

**Code M03.DS012** 2L

**Code M03.DS014** 4L

06

**Solopol natural 250ml tube**

Solopol natural 250ml tube (x1). Solvent-free hand cleanser with scrubbing-agent for heavy-duty contamination.

**Code M31.33279**



# deb stoko



## SKIN PROTECTION CENTRE SANITISE

Hand sanitiser that can be used without water to kill germs and provide a higher level of hand hygiene and skin disinfection

07

### Stoko Refresh Toilet Seat Cleaner Spray 500ml

Stoko Refresh Toilet Seat Cleaner Spray 500ml (x1). Spray with alcohol content for hygienic cleaning of the toilet seat.

Code **M31.35010**



08

### Stoko Refresh Sanitiser Gel 1000ml

Stoko Refresh Sanitiser - Gel 1000ml (x1). Gel for optimal hand disinfection without water with simultaneous skin care by means of a moisturising complex. Effective against bacteria (including MRSA), fungi and enveloped viruses.

Code **M31.34986**



# deb stoko



## SKIN PROTECTION CENTRE RESTORE

After-work skin restore creams help to maintain the skin in healthy condition by keeping it soft and supple, avoiding dryness. Good skin condition is an important element in ensuring good hand hygiene practice.

09

### Stokolan Classic Scented

Stokolan Classic Scented. Regenerating care cream with natural moisturizing factors and lanolin. For normal to dry and stressed skin.

1000ml x 9

100ml x 1

Code **M31.22326**

Code **M31.85484**

### Stokolan Soft & Care

Stokolan Soft & Care. Vitalizing care gel with creatine. For normal skin.

1000ml x 9

Code **M31.31841**



10

### Stokolan Light PURE 1L Refill

Stokolan Light PURE Refill 1L - Perfume-free and dye-free mild formulation reduces the risk of skin irritation. Non-tainting to food. Contains glycerine, allantoin and shea butter to moisturise and condition the skin. Suitable for use under latex and nitrile gloves.

Code **M03.DS016**



01

**Stoko Vario Ultra Dispenser**

Sturdy plastic construction, available in a choice of colours for easy identification of HAND CARE product. All Stoko VARIO ULTRA dispensers are for use with 1000 ml and 2000 ml Soft Bottles. 320 mm x 135 mm x 135 mm

**Code M31.27655** White

**Code M31.26180** Black



02

**Stoko Refresh Dispenser**

Stoko Refresh Dispenser.

**Code M31.34940** 1000ml White

**Code M31.34941** 1000ml Silver

**Code M31.34942** 1000ml Black



03

**Stoko Refresh Dispenser**

Stoko Refresh Dispenser.

**Code M31.34944** 500ml White

**Code M31.34946** 500ml Black



# Stokoderm<sup>®</sup> Frost

 Specialist Pre-Work Skin Protection Cream for Working in Cold Conditions  
 Low Temperatures | Anti-Freeze Effect

## Where to use:

- Outdoor workers exposed to cold environments
- Indoor workers exposed to refrigerated environments

**PROTECT  
your skin  
against the  
COLD!**



01

**Skin Safety Centre**

Deb/Stoko Skin Safety Board (x1).

Code **M03.DS001**



02

**Dispenser Deb Protect 1000**

Deb 1L Dispenser Protect 1000.

Code **M03.PRO1LDSEN**



03

**Dispenser Deb Sunscreen 1000**

Deb 1L Dispenser Protect 1000.

Code **M03.SUN1LDSEN**



04

**Dispenser Deb Cleanse 1L**

Deb 1L Dispenser Cleanse Washroom 1000.

Code **M03.DS111**



05

**Dispenser Deb Cleanse Light**

Deb Dispenser Cleanse Light.

**Code M03.DS122** 1L

**Code M03.DS222** 2L



06

**Dispenser Deb Cleanse Heavy**

Dispenser. Deb Cleanse.

**Code M03.DS200** 2L

**Code M03.DS400** 4L



07

**Dispenser Cleanse Antibac 1L**

Deb 1L Dispenser Cleanse Antibac 1000.

**Code M03.FHC1000D**



08

**Dispenser Naturally 1000 (Step 3 Restore)**

Deb 1L Dispenser Restore 1000.

**Code M03.DEB1000RES**



09

**Skin Safety Cradle**

Skin Safety Cradle (x1). Complete 3-step system for vans and work cabins.

**Code M03.DS600**



10

**Hand Cleanser (Skin Cradle) 750ml (x6)**

Deb 'Cradle' Hand Cleaner. 750ml (x6). Lime smooth cream hand cleaner that can be used without water.

**Code M03.DS620**



11

**Hand Sanitiser(Skin Cradle) 750ml (x6)**

Deb 'Cradle' Skin Sanitiser. 750ml (x6). Instant skin sanitiser to kill germs.

**Code M03.DS630**



12

**Protective Cream (Skin Cradle) 700ml (x6)**

Deb 'Cradle' Protective Cream. 700ml (x6). Multi-purpose pre-work & reconditioning cream.

**Code M03.DS610**



01

**Pink Lotion Soap 5L**

This soap is suitable for hotels, restaurants and staff washrooms, and has a pink pearlescent appearance with a light perfume. It leaves the skin feeling fresh and smooth.

Code **M03.H0083**



02

**Citrand 5L**

Citrand 5L (x1). Citrus Beaded Hand Gel. Soft gel, dissolves and removes oil, grease and stubborn soiling from hands. With polymer beads for maximum performance and glycerine for added skin protection.

Code **M02.H0031**



03

**Pink Pearl 5L**

Pink Pearl 5L (x1). Pearlescent Hand, Hair and Body Wash with moisturiser to protect skin, and refreshing fragrance.

Code **M04.H0036**



04

**Evans Orchard Fresh 5L**

Evans Orchard Fresh 5L (x1). Refreshing Hand, Hair and Body Wash. Contains moisturiser.

Code **M04.H0038**



05

**Trigon 5L**

Trigon 5L (x1). Unperfumed hand wash with moisturiser. Neutral pH so mild and gentle to the skin.

5L x 1

Code **M03.H0067**



06

**Trigon Plus: Bactericidal Hand Wash**

Bactericidal Hand Wash. Passes EN 1499, EN 13727 & EN 1276; kills 99.999% of bacteria. Unperfumed, suitable where food is handled. Contains moisturising ingredients.

5L x 1

Code **M03.H0068**

1L Disposable cartridge

Code **M03.H0068-1L**



07

**Dreumex Special beaded, solvent free, 15kg**

Dreumex Special solvent free hand cleanser which contains abrasive. 15kg tub.

Code **M01.H0010**



08

**Anti-Bacterial Hand Wash**

Anti-bacterial Hand Wash is a kind but powerful sanitizer that kills bacteria in seconds. Lightly perfumed, it is specially formulated for use in high risk areas (eg. hospital wards). It is effective against MRSA and kills 99.9% of germs, whilst the added emollients leave hands smooth and conditioned.

Code M05.SP21241



09

**Bactericidal Hand Wash**

Bactericidal Hand Wash is a certified bactericidal hand washing cream for high standards of personal hygiene. This unperfumed and non-tainting hand wash is ideal to use in food preparation areas or wherever germs and bugs need to be kept under control. Kills 99.9% of germs including MRSA, E. coli and Salmonella. Contains emollients to leave hands smooth and conditioned.

Code M05.SP21251



10

**Trigon 500ml**

Unperfumed hand wash with moisturiser. Neutral pH so mild and gentle to the skin.

500ml x 6

Code M03.H0067-500



11

**Trigon Plus: Bactericidal Hand Wash**

Bactericidal Hand Wash. Passes EN 1499, EN 13727 & EN 1276; kills 99.999% of bacteria. Unperfumed, suitable where food is handled. Contains moisturising ingredients.

500ml x 6

Code M03.H0068-500



12

**Peach Fresh Hand and Body Wash 500ml (x6) c/w pump dispenser**

Evans Orchard Fresh 500ml (x6). Refreshing Hand, Hair and Body Wash. Contains moisturiser.

Code M05.SP28172



13

**200ml Aquasan Liquid Hand AntiBac Soap**

"Cleans hands anywhere".

- AntiBac
- With Aloe Vera
- Cleansing & Moisturising
- Vegan Friendly
- Only Tested on Humans
- Made in England

Code M05.SP25116



14

**Buttermilk Soap 70g**

Buttermilk Toilet Soap. Economy, unwrapped tablet soap with pleasant perfume. 70g bar. 72 bars/case.

Code M05.H0110



15

**Guest Soap 18g**

Buttermilk Guest Soap 18g 12 x 12 = 144 bars/case.

Code M05.H0116



01

**Grimeez Max (80 wipes/tub)**

Grimeez Max Wipes are an industrial tried and tested heavy duty hand and surface cleaner. The orange scrub side can be used to remove heavy duty soiling. The smooth side can be used to soak it up. Anti-bacterial, anti-viral action. 20x30cm

**Code M06.7799.1**



02

**Industrial Wipes (x150/tub)**

Industrial Hand Wipes (Bucket 150). Antibac and antiviral Specially formulated for the effective removal of inground oil, grease, tar, silicon, carbon black and paint from hands without water. EN13727, 25cm x 31cm

Hand Wipes (x150/tub)

**Code M06.SP21466**

Quik Wipes (2.5L Bucket)

**Code M91.23122**



03

**Probe Wipes (x200)**

Probe Wipes Anti-bacterial - Effective wipes for disinfecting probes between use. Kills 99.9% of all bacteria within 30 seconds, including E-coli, Listeria, Salmonella & P.Aeruginosa. Indirect food contact safe. Tested to BS EN1276. Wipe size: 12 x 13cm.

**Code M90.SP21400**



04

**Alcohol Free Disinfectant Wipes**

Antibacterial and Antiviral Quat and PHMB free Formula EN1276, EN1650, EN13727(MRSA), EN13697. Disinfectant wipe for cleaning and disinfecting hard surfaces.

1500 wipes - 23gsm  
(Sheet size 20x20cm)

**Code M91.H1500**



05

**Computer Screen Wipes (100 wipes/tub)**

Specially formulated screen wipes - anti-static wipes for cleaning screens, laptops, computers, tablets, phones, etc. Screen Wipes kill 99.9% of all bacteria including E-Coli, Listeria, Salmonella, MRSA and H1N1.

**Code M91.SP27447**



06

**Disinfectant Wipes**

Antibacterial and Antiviral Quat and PHMB free Formula EN1276, EN1650, EN13727(MRSA), EN13697. Disinfectant wipe for cleaning and disinfecting hard surfaces.

500 wipes - 40gsm  
(Sheet size 23x20cm)

**Code M91.HA500**



06

**Hand & Surface Disinfectant Wipes**

Designed for the safe disinfection of all hard surfaces including worktops, door handles, sanitary ware, stainless steel etc. Indirect food contact safe. The essential wipe for food preparation areas. Kills 99.99% of all bacteria including E-coli, Salmonella, Listeria, P.Aeruginosa, MRSA, H1N1 (Influenza A), HIV and Hepatitis B-C. Tested to BS EN1276 & BS EN14476.

**Code M91.FW640**



07

**Paint & Graffiti Removal Wipes (x150 wipes/tub)**

Effective wipe for the safe removal of paint overspray, permanent marker, ink and general graffiti from non porous surfaces 30x25cm

**Code M90.SP21400**



08

### Sanitising Wipes (200 wipes/tub)

Hand and Surface Sanitising wipe. Kills 99% of all bacteria without water. EN1276, 20x20cm

Code M91.H8084



09

### PURELL® Surface Sanitising Wipes

Convenient 100 count canister. Designed specifically for food contact surfaces. Passed food tainting test according to ISO 4120:2007. Ready to use formula with no rinsing required, leaves no residue on surfaces. Fast acting formula effective from 30 seconds. High antimicrobial efficacy - Bactericidal, fungicidal, virucidal. Effective against: Coronavirus, Norovirus, E.Coli and Salmonella. Tested specifically on Salmonella, Campylobacter, Listeria and Yeast for food environment. Compatible on most smooth non-porous surfaces

(Sheet size 23x20cm)

Code M30.95102.1

(Sheet size 20x20cm)

Code M30.95104.1



Code: M91.5900

When it comes to tackling grime, we've rewritten the rules. With each clothwipe measuring a massive 38 x 25cm, there really is no job too big or too dirty to handle. Clothwipes also have extra strength built in, so no more coming apart on the job. They can be used again and again, and will stay moist out of the pack for over an hour. With a special formula for every application imaginable, Ultra-Grime Clothwipes are the end of the line for grime.



**WIPE OUT GRIME ON: HANDS, TOOLS & SURFACES**



**HARD TIME FOR GRIME, SAFE ON SKIN WITH ADDED ALOE VERA & VITAMIN E**



**CLOTHWIPES STAY WET FOR OVER 1 HOUR!**



**DEAL WITH: OIL, GREASE, INK, PAINT, SILICONE, PU FOAM & ADHESIVES**



# supernova<sup>®</sup>

germ protection

## germ protection for hands and surfaces



01

### SuperNova Hand Sanitiser Foam, alcohol Free

Proven effective against 99.9% of spores, bacteria, fungi and viruses including H1N1 (Swine Flu) and MRSA. The high performance formulation coats the skin with a monomolecular layer that continues providing protection long after the initial application. The 600ml bottle provides more than 400 hand washes, and the 50ml bottle provides more than 125 hand washes.

600ml Pump Bottle  
Code M04.SN01

50ml Mini Bottle  
Code M04.SN03



02

### SuperNova Hand Sanitiser Wipes.

Supernova Hand Sanitising Wipes provide long lasting germ protection to hands. The ready to use no water formulation provides easy instant germ protection to busy hands any time, any place, anywhere.

Hand Wipes  
(tub of 200)  
Code M04.SN04



03

### Supernova Personal Pack

A 50ml Supernova Mini Hand Foam for cleansing hands and a pack of 25 Supernova Active Sanitising Wipes for sanitising surfaces are packaged in a transparent waterproof bag. Providing total germ protection to hands and surfaces

Code M04.SN43



04

### Supernova Surface Sanitising Solution 5L

Supernova Surface Sanitising Solution can be mopped, sprayed or wiped onto floors, walls, surfaces and equipment to provide broad spectrum pathogen protection and biological cleanliness to areas and apparatus in an instant.

Code M04.SN12



# supernova<sup>®</sup>

germ protection

## germ protection for hands and surfaces



Supernova is a revolutionary alcohol free hand and surface germ protection system. Independently proven to kill 99.9% of bacteria, spores, viruses and fungi on contact.

### Alcohol free

No cultural issues, no substance abuse issues, will not irritate the skin and is not flammable.

### Kills more germ types

Unlike alcohol hand gels and surface solutions, Supernova is proven effective against *Clostridium difficile* and *Norovirus* as well as **MRSA**, Swine Flu and Avian Flu to name but a few!

### Long lasting

Unlike alcohol hand gels and surface solutions, Supernova provides protection long after hands and surfaces have dried.



For further information please call or email our helpful sales team on 01202 71800 or [sales@towersupplies.com](mailto:sales@towersupplies.com)

# SKIN HEALTH & HYGIENE SOLUTIONS FROM GOJO



## WASH

GOJO has a comprehensive range of mild, fragranced & antimicrobial hand washing products to meet the customers needs and to keep skin healthy



## SANITISE

Hand Sanitising provides an additional layer of protection against the spread of germs. PURELL® Advanced Hand Sanitisers have exceptional antimicrobial efficacy and are clinically proven to maintain skin health



## SURFACE SANITISING

PURELL Surface Sanitising Spray & Wipes offer powerful germ kill with PURELL peace of mind. Designed specifically for food contact surfaces, these range of products are fast acting and sanitise everywhere you need it, front & back of house with no rinse required.



# PERFORMANCE GUARANTEED MANUAL DISPENSING SYSTEM



## GOJO® and PURELL® ADX® Manual Dispensing Systems

GOJO and PURELL ADX Dispensers offer exceptional reliability, easy service, and design that looks good in any environment.

01

GOJO Chrome /Black 1200ml <b>Code M30.8888</b>	Purell White/White 1200ml <b>Code M30.8820</b>	GOJO Grey/White 1200ml <b>Code M30.8884</b>
700ml <b>Code M30.8788</b>	700ml <b>Code M30.8720</b>	700ml <b>Code M30.8784</b>

02

### GOJO Mild Antimicrobial Foam Handwash

Hypoallergenic & mild to the skin for frequent usage; pH neutral; free of dyes and fragrances. Enriched with moisturising agents. Tested under medical conditions. Broad Spectrum Efficacy\* (bacteria, yeast & virus) Biocidal product PT1. Contains biodegradable plant based surfactants. Food Taint Test Compliant: BS EN ISO 4120:2007. SMART-FLEX™ bottle design uses 30% less material than HDPE Controlled collapse technology maintains bottle shape longer while emptying. Removable pump for easier recycling.

1200ml (x3) <b>Code M30.8848</b>	700ml (x4) <b>Code M30.8748</b>
-------------------------------------	------------------------------------



03

### GOJO Mild Foam Handwash

Spa-inspired, green certified foam hand skin conditioners

1200ml (x3) <b>Code M30.8811</b>	700ml (x4) <b>Code M30.8711</b>
-------------------------------------	------------------------------------



04

### GOJO Freshberry Foam Handwash

GOJO Freshberry Foam Hand Wash for ADX. Spa-inspired foam hand wash offers luxurious lather and a pleasant botanical fragrance. Vibrant green colour. Enriched with moisturisers, natural extracts and skin conditioners. Delights users while supporting a healthy environment. Ecolabel certified. Refills made with GOJO SMART-FLEX Technology.

1200ml (x3) <b>Code M30.8816</b>	700ml (x4) <b>Code M30.8716</b>
-------------------------------------	------------------------------------



05

### PURELL Advanced Hygienic Hand Rub

PURELL Advanced Hygienic Hand Rub for ADX. A breakthrough formulation with exceptional antimicrobial efficacy. A rub that feels great to use and is clinically proven to maintain skin health! Conforms to: Bactericidal - EN 1500 (hand sanitiser), EN 12791 (surgical rub). Virucidal - EN 14476. Refills made with GOJO SMART-FLEX Technology.

1200ml (x3) <b>Code M30.8803</b>	700ml (x4) <b>Code M30.8703</b>
-------------------------------------	------------------------------------



# TOUCH FREE TROUBLE FREE HAND HYGIENE



## GOJO® and PURELL® TFX® Dispensing Systems

TFX Touch Free Dispensing System, there's nothing to touch— just place hands below.  
The future of hand hygiene is touch free.



01

### TFX GOJO Premium Foam Soap 1200ml (x2)

GOJO Premium Foam Handwash with Skin Conditioners for TFX. Provides rich, thick lather for a luxurious handwashing experience. Gentle on skin. Pleasant cranberry fragrance. Translucent purple colour. Refills made with GOJO SMART-FLEX Technology.

Code M30.5361



02

### GOJO TFX Dispenser, Touch Free

GOJO TFX Touch-Free Dispenser - (w/o batteries).

White

Code M30.2739

Metallic

Code M30.2799

03

### PURELL TFX Dispenser, Touch Free

PURELL TFX Touch-Free Dispenser - (w/o batteries).

White

Code M30.2729

Metallic

Code M30.2790

04

### TFX Gojo Foam Handwash 1200ml (x2)

A foam handwash that is extremely gentle to the skin and contains no fragrance or dyes. Mild enough for high frequency washing. Over 93% ingredients derived from plant sources. Contains ingredients derived from coconut oil 74.5% biodegradable (OECD 301D). Dispenser refills use GOJO SMART-FLEX™ technology. Fragrance free and dye free.

Code M30.5348



05

### TFX Gojo Mild Antimicrobial Foam Handwash 1200ml (x2)

GOJO Mild Antimicrobial Foam Soap for TFX. Smooth foaming handwash with germ killing power. Fragrance free. Conforms to EN 1499, EN 1276, EN 1040 and EN 13727. Refills made with the new GOJO SMART-FLEX Technology.

Code M30.5378



06

**TFX Purell VF481 1200ml (x4)**

PURELL Hand Sanitising Gel VF481™ (AntiViral Formula) for TFX. This has broad spectrum viral efficacy that is specifically designed to meet the European antiviral norm EN 14476, and is clinically proven to be mild on the skin. Also confirms to EN 12791 in 60 seconds, EN13727, EN 1040, EN14348, EN 1275 and EN 1500 in 15 seconds. Refills made with GOJO SMART-FLEX Technology.

**Code M30.5496**

07

**TFX/LTX Stand for dispenser**

Sanitising Station for use with PURELL and GOJO LTX/TFX dispensers. Freestanding stations makes PURELL Sanitisers available anywhere. Great for high traffic areas or wherever crowds gather.

Metallic  
**Code M30.2423DS**

Grey  
**Code M30.2424DS**



08

**TFX PURELL Hand Hygienic 1200ml (x4)**

PURELL Advanced Hygienic Hand Rub for TFX. A breakthrough formulation with exceptional antimicrobial efficacy. A rub that feels great to use and is clinically proven to maintain skin health! Conforms to: Bactericidal - EN 1500 (hand sanitiser), EN 12791 (surgical rub). Virucidal - EN 14476. Refills made with GOJO SMART-FLEX Technology.

**Code M30.5476**

09

**Hand Sanitising Moisturising Foam 1200ml (x4)**

PURELL Hygienic Hand Sanitising Foam for TFX. The same PURELL quality in a non-aerosol foaming formula. Contains moisturisers to help keep skin healthy. Conforms to EN 1500, Bactericidal - EN 1040, and Yeastocidal - EN 1275. Fragrance and dye free. Refills made with GOJO SMART-FLEX Technology.

**Code M30.5396**

10

**TFX Floor Stand Dispenser Elite**

Floor stand hand sanitizer dispenser that uses PURELL® TFX™ refills. Innovative, super-premium design. Ideal for casinos, hotel lobbies and malls. Actuated from both sides. Durable, no-rust aluminum and polypropylene construction High-capacity, enclosed drip tray hides overflow Compatible with PURELL®

TFX™ 1200 mL refills

**Code M30.2454-DS02**

11

**Drip Tray White for TFX Touch Free Dispenser**

SHIELD™ Floor and Wall-Protector. White. Helps maintain wall and floor appearance by attaching to the bottom of a TFX Touch-Free dispenser. Protects floor, wall and countertop. Simple and easy to install. Works with previously installed systems.

**Code M30.2760**

# COMBINING LUXURY AND CONVENIENCE



01

## FMX Dispenser Gojo 1.2L

GOJO FMX Dispenser - White.

Code M30.5157

02

## FMX Dispenser Purell 1.2L

PURELL FMX Dispenser - White.

Code M30.5129

## GOJO® and PURELL® FMX® Dispensing Systems

GOJO foam soaps combine with the FMX dispenser to create a powerful cleaning system. Air is infused into the soap as it's dispensed, creating a rich, luxurious lather.

03

## FMX GOJO Mild Foam Hand Soap

Spa-inspired foam hand soap that is both fragrance and dye free. Mild enough for high-frequency washing. EcoLabel certified. SMART-FLEX™ Technology. Removable pump for easier recycling. SANITARY SEALED™ refill helps prevent contamination. Fresh dispensing valve with each refill. 1250ml (x3)

Code M30.5167



04

## FMX GOJO Antimicrobial Plus Foam Handwash

Hypoallergenic & mild to the skin for frequent usage: pH neutral; free of fragrances. Tested under medical conditions. Broad Spectrum Efficacy\* (bacteria, yeast & virus). Biocidal product PT1. Contains biodegradable plant based surfactants. Food Taint Test Compliant: BS EN ISO 4120:2007 Removable pump. 1250ml (x3)

Code M30.5148



05

## FMX Purell Hand Sanitising Foam

PURELL Hygienic Hand Sanitising Foam for FMX. The same PURELL quality in a non-aerosol foaming formula. Contains moisturisers to help keep skin healthy. Conforms to EN 1500, Bactericidal - EN 1040, and Yeasticidal - EN 1275. Fragrance and dye free. Refills made with GOJO SMART-FLEX Technology. 1250ml (x3)

Code M30.5196



06

## FMX GOJO Foaming Handwash

GOJO Luxury Foam Handwash for FMX. Rich, gentle luxury foam handwash, pre lathered for a convenient and pleasing experience. For general, hand cleaning. Pleasant cranberry fragrance. Translucent pink colour. Refills made with GOJO SMART-FLEX Technology. 1250ml (x3)

Code M30.5161-FB





# RUGGED, HIGH-CAPACITY PRO TDX DISPENSERS



07

GOJO PRO TDX - 2000ml Code M30.7200  
GOJO PRO TDX - 5000ml Code M30.7500

08

### Natural Scrub Hand Cleaner

Refill for GOJO® PRO™ TDX™ Dispenser. Heavy duty hand cleaner. Effective against : dirt, grease, oil, carbon black, oil-based paint, tar. Target markets : workshops, garages, or where medium duty soils are encountered. Solvent free. Silicone free. Contains moisturisers. Tested under medical control. Contains apricot stone. Fresh fragrance. Ecolabel certified.

2L

Code M30.7355

5L

Code M30.7635



09

### Olive Scrub Hand Cleaner

Refill for GOJO® PRO™ TDX™ Dispenser Heavy duty hand cleaner. Effective against : dirt, grease, oil, carbon black, oil-based paint, tar. Target markets : workshops, garages, or where medium duty soils are encountered. Solvent free. Silicone free. Contains moisturisers. Tested under medical control. Contains apricot stone. Fresh fragrance. Ecolabel certified. 2L.

Code M30.7332



10

### Supro Max 2000ml (x4)

GOJO SUPRO MAX™ Hand Cleaner for PRO TDX - 2L. Fast and effective hand cleaner removes tough or sticky soils, such as ink, tar, oil and grease. Unique blend of cleaners and gentle scrubbers. Ideal for plant-wide use, body shops or wherever difficult soils are found. Apply to dry hands, then rinse. Non-drying formula. Contains crushed walnuts. 2000ml (x4)

Code M30.7272



## GOJO® PRO TDX® Manual Dispensing Systems

Ideal for production, tool room, distribution and maintenance areas. Modern design with diamond-plate effect. Lifetime guarantee. Large sight window for at-a-glance monitoring. Portion control helps reduce waste.



Purell  
BRAND

## PURELL® LTX® Dispensing System

LTX Touch Free Dispensing System, there's nothing to touch — just place hands below.  
The future of hand hygiene is touch free.



01

### Dispenser LTX-7

PURELL LTX-7 700ml  
Touch-Free Dispenser. Smart, trouble-free electronics eliminate battery changes in most installations. Large sight window for at-a-glance monitoring. High-capacity output. Converts to a locking dispenser – key included. Fully ADA compliant.

white/white

Code M30.1320

black

Code M30.1328



02

### LTX Purell Advanced Hygienic Hand Rub Cartridge

Includes moisturisers to help keep skin healthy. Kills 99.99% of most common germs that may be harmful. Conforms to: Bactericidal according to EN 1500 (hand sanitiser), EN 12791 (surgical rub), virucidal according to EN 14476. No-rinse hygienic hand rub. Recommended on hands that are lightly soiled & in conjunction with hand hygiene regime. 700ml (x3)

Code M30.1303



03

### Dispenser LTX-12

PURELL/GOJO LTX-12 1200ml  
Touch-Free Dispenser - Large sight window, skylight and crystal clear refill bottles make it easy to check fill status. Converts to a locking dispenser at any time by simply removing the key from inside the dispenser.

Purell - white

Code M30.1920

Gojo - grey/white

Code M30.1984

Gojo - black

Code M30.1919



04

### LTX GOJO Mild Foam Hand Soap

Mild enough for high-frequency washing. EcoLabel certified. SMART-FLEX™ bottle design uses 30% less material than HDPE. Controlled collapse technology maintains bottle shape longer while emptying. Removable pump for easier recycling. SANITARY SEALED™ refill helps prevent contamination. Fresh dispensing valve with each refill. 1200ml (x2)

Code M30.1911



05

### LTX GOJO Mild Antimicrobial Foam Handwash

Smooth foaming hand wash with broad spectrum germ killing power and moisturising properties. Hypoallergenic & mild to the skin for frequent usage: pH neutral; free of dyes and fragrances. 1200ml (x2)

Code M30.1952



06

### LTX Purell Advanced Hygienic Hand Rub Cartridge

PURELL Advanced Hygienic Hand Rub for LTX. A breakthrough formulation with exceptional antimicrobial efficacy. A rub that feels great to use and is clinically proven to maintain skin health! Conforms to: Bactericidal - EN 1500 (hand sanitiser), EN 12791 (surgical rub). Virucidal - EN 14476. Refills made with GOJO SMART-FLEX Technology. 1200ml (x2)

Code M30.1903



# PROTECTING HARD WORKING HANDS AND HELPING TO KEEP HANDS HEALTHY



## GOJO® HAND MEDIC® ADX-7 Dispensing System

Professional Skin Conditioner is available in a variety of sizes and dispensing options for every environment.

07

### GOJO® HAND MEDIC® Professional Skin Conditioner for ADX

GOJO HAND MEDIC Professional  
Skin Conditioner ADX-7™  
Refill 685ml (x4)

Code **M30.8745**



09

### GOJO® HAND MEDIC® ADX-7™ Dispenser

Small size 700 ml GOJO® HAND MEDIC® dispenser is ideal for tight spaces. Large sight window, crystal clear refill bottles make it easy to check fill status. Converts to a locking dispenser at any time by simply removing the key from inside the dispenser.

Black

Code **M30.8782**

White

Code **M30.8781**

08

### GOJO Hand Medic Skin Conditioner

GOJO HAND MEDIC Professional Skin Conditioner - Specifically formulated for professional technicians for use in their work environments. Quickly absorbs, with no greasy after feel. Use before work, after handwashing and at night to help maintain the skin's natural protective barrier. Silicone and fragrance free

Hand Medic Skin Conditioner 148ml tube (pack of 12)

Code **M30.8150**

Hand Medic Skin Conditioner 60ml bottle (pack of 12)

Code **M30.8142**



# BALANCING CAPACITY AND SPACE



## GOJO® and PURELL® NXT® (Dispensers no longer available)

01

### NXT Deluxe Lotion Soap

GOJO Deluxe Lotion Soap with Moisturisers for NXT. Luxurious lotion soap that cleans hands gently, even with frequent use. For public facilities, offices, and general washrooms. Has a fresh, light floral fragrance. 1L (x8)

Code M30.2117



02

### NXT Mild Lotion Soap

GOJO® Mild Lotion Soap. 1000 mL Refill for GOJO® NXT® Dispenser. Mild lotion handwash. Gentle enough for high-frequency washing. Fragrance and dye free SANITARY SEALED™ refill helps prevent contamination Fresh dispensing valve with each refill. 1L (x8)

Code M30.2103



03

### NXT Instant Sanitizer

PURELL Advanced Hygienic Hand Rub for NXT. A breakthrough formulation with exceptional antimicrobial efficacy. A rub that feels great to use and is clinically proven to maintain skin health! Conforms to: Bactericidal - EN 1500 (hand sanitiser), EN 12791 (surgical rub). Virucidal - EN 14476. 1L (x8)

Code M30.2156



04

### NXT Spa Bath

GOJO Spa Bath Body & Hair Shampoo for NXT. Luxurious enriched formula for hands, hair and body. Ideal for use within the leisure industry. Pleasant herbal fragrance. 1L (x8)

Code M30.2152



05

**GOJO® Dispenser Star White Bag-In-Box**

GOJO® 800 Series Bag-in-Box Dispenser 800ml - Traditional system where the refill comes with the bag fitted into a box. All of which goes into the dispenser. 800ml.

Code M30.9037



06

**GOJO Lotion Skin Cleanser**

GOJO Lotion Skin Cleanser 800ml refill - Extremely effective in normal hand washing applications where common everyday soils are encountered. Designed to provide excellent cleansing and quick rinsing properties, whilst also being mild to the skin. 800ml.

Code M30.9112-6



07

**Purell VF+ Hygienic Hand Rub**

Virucidal hygienic hand rub suitable for high frequency hand sanitising. Hypoallergenic\*. Contains moisturisers to help keep skin healthy. Fully virucidal (EN 14476+A1). Dye free, fragrance free. Passed food tainting test in accordance with EN 4120:2007. Kills up to 99.999% of most common germs that may be harmful. 300ml.

Code M30.9295



08

**Purell Hygienic Hand Rub 350ml**

An hygienic hand rub that feels great to use and is clinically proven to maintain skin health. Includes moisturisers to help keep skin healthy. Kills 99.99% of most common germs that may be harmful. Conforms to: Bactericidal according to EN 1500 (hand sanitiser), EN 12791 (surgical rub), virucidal according to EN 14476. 350ml (x12).

Code M30.9659



09

**Purell Advanced Sanitiser**

An hygienic hand rub that feels great to use and is clinically proven to maintain skin health. Includes moisturisers to help keep skin healthy. Kills 99.99% of most common germs that may be harmful. Conforms to: Bactericidal according to EN 1500 (hand sanitiser), EN 12791 (surgical rub), virucidal according to EN 14476

Purell Sanitiser 60ml

Code M30.9606

Purell Sanitiser 100ml

Code M30.9661

Purell Sanitiser Pump 300ml

Code M30.9263



10

**Wall Bracket for Purell Bottle 350ml**

PLACES™ Holder Compact Bottle Bracket - Compact, adhesive-mounted bracket allows you to place bottles of PURELL® on nearly any smooth wall or vertical surface.

Code M30.9005



11

**Purell Gear Retractable Clip for 2 fl oz Pump or Squeeze Bottles**

Keeps PURELL® Hand sanitiser close at hand. Holds a 2 fl oz pump or squeeze bottle of PURELL® Instant Hand Sanitizer PURELL® Instant Hand Sanitizer sold separately

Code M30.9608



01

**NapkinGo Sanitising Tissue**

NAPKIN GO - BOX OF 50 COMPRESSED WIPES WITH BUILT-IN SANITISING LIQUID. Wipes are 100% Pure Viscose (Natural Fibre). Hypoallergenic, Dermatologically Tested. Light, Compact & Easy to Carry



Code M59.GO8

02

**NapkinGo Safe Gel**

SAFE GEL 125ml is a 70% v/v alcohol based product, conceived to clean and sanitize hands, with no water or rinse. Its fastGel liquid formulation with vegetal glycerine, absorbs very quickly, leaving hands soft and not sticky. 125ml.



Code M59.N009

03

**Hand Sanitiser, Alcohol Gel**

- Anti-Bacterial
- 70% Alcohol Hand Sanitizer
- Conforms to standards EN1276, EN12791, EN14476, EN1500

100ml (x48)

Code M01.2043

500ml (x12)

Code M01.2036



04

**Hand Cleanser, High Alcohol Gel**

Malibu Aquasan Hand Sanitiser High Alcohol Gel "Clean hands anywhere."

- 65% Alcohol Gel
- Anti-Bacterial
- Dermatologically Tested
- Only Tested on Humans
- Made in England

100ml (x12)

Code M04.HG100

200ml (x8)

Code M04.HG200



05

**Hand Sanitising Gel 5L**

Clean, care and protect your hands with Tower Supplies Hand Gel. An effective 70% alcohol formulation.

The Centers for Disease Control and Prevention recommend using hand sanitisers with at least 56.7% alcohol.

Code M01.2020



06

**Handsan 5L**

Handsan™ 70% Alcohol-Based Hand Disinfectant

Code M04.A051EEV-2



07

**Nilaqua Alcohol Free Sanitiser Product range**

Nilaqua® Alcohol Free Hand Sanitiser; The Best Hand Sanitiser in the World?

We certainly think so, the Nilaqua® EN14476 approved alcohol-free product range is non-irritating to the skin, non-toxic, non-skin drying, non-flammable and allergen free. Nilaqua® Hand Sanitiser kills up to 99.9999% of germs like Coronavirus, MRSA, C-diff and E-coli, salmonella and more in just 30 seconds, yet it's gentle to the skin.

Nilaqua® also provides up to 6 hours protection on your hands. Nilaqua® alcohol free sanitiser is skin safe and supplied to the NHS. Nilaqua® is EN1500 approved which means the bugs are tested on real people not just test tubes! EN1500 is the standard required by the NHS.

55ml (x24)

**Code M04.HS02**

500ml (x12)

**Code M04.HS05**

5L (x4)

**Code M04.HS06**



08

**Nilaqua® Antimicrobial Skin Cleanser**

Using Towel Off® Technology, Nilaqua's Cleansing Foam Effectively Cleans Skin & Kills Germs, Leaving You Fresh And Odour Free Without Using Any Water. Paraben Free And Ph Balanced To Be Mild And Non-Irritating To The Skin.

This Antibacterial Cleanser Is Ideal For Infection Control, Killing Mrsa, C-Diff, Ecoli And Much More In 30 Seconds Contact Time. As A Quatz, Our Active Ingredients Are Much Kinder To The Skin Over Chlorhexidine Based Skin Cleansers.

200ml

**Code M01.WIAMS-200**



09

**Waterless Soap/Dispenser**

Manual Foam Dispenser, ideal for areas with water restrictions. Holds up to 1000ml and made from durable ABS plastic. The "Slim Look" design. Recessed window for viewing soap level.

Our antibacterial wash kill a huge array of germs such as Legionella, Listeria, Salmonella, C-Diff, MRSA, Ecoli, Norovirus and more. Better yet it is kind and gentle to skin, designed for repeat use and with an NHS approved formula. Dramatically reducing sick days.

To use simply apply the kind and gentle liquid to hands, massage together to lift dirt into the solution, then whilst wet and soapy remove mud and dirt by wiping off

Dispenser

**Code M07.WLSD001**

Refill Pouch 800ml (x6)

**Code M01.WLAMS**



01

**Wall Mounted Dispenser - Elbow Action**

Wall mounted Dispenser – Elbow Action  
Wire Bottle Holder  
Empty plastic Bottle  
Mounting apparatus and Adhesive

Code M07.SP244501



02

**Automatic Dispenser**

It is made of ABS material.  
Works with the sensor, provides ease of use without touching.  
Provides 0.45 ml liquid soap / gel with 3-step adjustment each time.  
Works with 6x1,5 V AA batteries.

Code M07.H0096



03

**Manual Dispenser**

It is made of high-quality ABS material.  
It can be used by mounting on the wall. Refillable.  
It gives 0.45 ml of foam every time.  
Capacity: 1000 ml

Code M07.H0097



04

**Touchless Sanitizer Dispenser**

Touchless Sanitizer Dispenser  
Using high-accuracy sensors, these portable systems deliver a precise quantity of soap or sanitizer without the need to touch the dispenser. This vastly reduces the risk of infection transmission while ensuring users get the right amount of product every time as well as minimizing wastage.

Touchless Dispenser  
Code M07.D123AEV

Stand with back plate/drip tray  
Code M07.D124AEV



05

**Bulk Fill Lotion Dispenser**

Bulk 1 litre tank with Lid. Interchangeable pumps and containers. Print options. Coloured window options  
For use with Perfumed/Unperfumed hand lotion soap; Anti bac Soap; before and after work creams, sun creams; Alcohol sanitizers or gels (up to 70% alcohol content); Grit or beaded soaps

Code M07.H0094



06

**Delux Sanitiser Station**

Premium touch free sanitiser station. 5L Refill. This station can be customised with your company details. Bespoke finishes available.

Please ask for details



07

**Mobile Sanitiser Station**

A choice of manual or automatic mobile sanitiser stations.

- Soft close hinges
- locking door
- sanitiser storage compartment
- 50mm castors
- Acrylic Display

Manual

Code M07.MSU850C-GY

Automatic

Code M07.ASU850C-GY



08

**Sanitiser Station**

Wall hung or desk sanitiser station

Code M07.CSS95



09

**5L Holder Bracket**

Wire Frame 5L holder bracket.

Code M07.SP20929



10

**Jolly Line Dispenser**

Completely unassembled to make easier the cleaning of the dispenser. Releases the solution by pressing the button. Transparent container that allows to check the available quantity. It is equipped with a pump leak. Closure with removable key. Capacity 0.9L

Code M07.AU3GP200



11

**Modular Industrial Dispenser**

Multi-purpose, refillable for liquid hand wash and gels. 2 litre capacity with 3ml pump. Ideal for use with Carehands. Strong, durable, easy clean design. Suitable for heavyduty and beaded hand cleaner.

Code M07.H0099



# DISINFECTANT - ECA WATER

**A cleaning solution for a changing world.  
Uses water, salt and electricity to kill 99.99% germs**

This is a low cost effective cleaner/disinfectant produced from a simple solution of table salt and tap water using electrochemical activation. Produced simply where and whenever needed this 1-litre unit is ideal for daily cleaning of a small facility. 10 and 25-litre auto-replenishment units are also available.

- Fast acting with up to 99.999% kill rate
- Simple and cost effective to use (0.15p/litre)
- Non-toxic and non-hazardous (no COSHH)
- On-tap production
- Meets requirements of BS EN 1276 and 13704 Chemical Disinfectant
- Environmentally friendly



### How it works

1. Add water and 2g salt
2. Turn on and wait 4 minutes
3. Fill trigger spray bottle - ready to use with a microfibre cloth
4. Once made, effective for up to 5-days

### Where can the solution be used?

Work surfaces, glass, windows and mirrors	Ceramics, stainless steel, chrome and metals	Kitchen, canteens and food preparation areas
Fabrics, carpets and mattresses	Plant and equipment	Floors and walls
Washrooms, toilets and showers	Textiles and fabrics	Offices, restaurants, schools, clinics and public areas

### What cleaning products does it replace?

- Disinfectant
- Sanitisers
- Hard surface cleaner
- Stainless steel cleaner
- Washroom cleaner
- Glass cleaner
- Floor cleaner
- Fabric cleaner

**For more information about ECA Water options please call our helpful sales team on 01202 718000 or email [sales@towersupplies.com](mailto:sales@towersupplies.com)**

# DECONTAMINATION

## Fast Effective Decontamination, ideal for Care Homes, Hospitals, Cruise lines, Vets and Hotels



Kills 99.99% of bacteria  
Such as MRSA, E.Coli, COVID 19  
VRE, C.difficile, Norovirus

- Safe and easy to use
- Non Toxic, Non Flammable
- No Capital Cost
- No Labour Cost
- Press & leave 60mins
- Works in small areas
- Bio-degradable fluid
- Bio-degradable Canister
- Very cost effective

### A smarter cost effective decontamination solution

- No Laundering of Curtains
- No Steam cleaning of Carpets
- No Manual cleaning of surfaces post treatment
- Everything insitu decontaminated
- Fast – Multiple rooms complete in under an hour
- Air Quality treated
- Odours eliminated

01

#### Gienie Canister 250ml

Decontamination canister - effective area 20 to 50m. Kills 99.99% of bacteria such as MRSA, E.Coli, COVID 19, VRE, C.difficile, Norovirus.

Code M13.GNE250



02

#### Gienie Canister 100ml

Decontamination canister - effective area 1 to 20m. Kills 99.99% of bacteria such as MRSA, E.Coli, COVID 19, VRE, C.difficile, Norovirus.

Code M13.GNE100

For more information about Gienie please call our helpful sales team on  
01202 718000 or email [sales@towersupplies.com](mailto:sales@towersupplies.com)

01

**Bleach 5L**

Contract Bleach 5L. Kills germs and removes stains. Ideal for toilet bowls, sink waste pipes, drains, basins, work surfaces.

Code M12.H0140



02

**Bleach Plus 5L**

Thick Bleach Plus. 5L. kills germs and removes stains. Ideal for toilet bowls, sink waste pipes, drains, basins, work surfaces.

Code M12.H0141



03

**Cyclone thickened bleach 5L**

Cyclone - 5L Extra Thick Bleach. Highly perfumed, thickened liquid with added detergent. Cleans and disinfects in one operation. Kills a range of bacteria. Ideal in washrooms, toilets and kitchens. Also suitable for soaking cloths and mops.

Code M12.H0142



04

**Domestos**

Domestos Professional Extended Germ-Kill Original Bleach Exceptional long lasting germ kill with C-TAC to thicken and allow it to cling longer to the surface. Ideal for toilets, sinks, waste areas and drains.

9 x 750ml

Code M12.H0144

5L

Code M12.H0143



05

**Detergent Chlorine Tablets (1.67g NaDCC)**

Used for a variety of disinfection tasks in Hospital, Food Production & Catering, Care, Nursing, Medical and many more applications.

- Easy to calculate precise dosing requirement and excellent for due diligence applications:
  - 1 tablet in 1 Litre = 1,000 parts per million available chlorine
  - 1 tablet in 5 Litres = 200 parts per million available chlorine
- Low Foaming Detergent – improve cleaning performance without impairing disinfection. Fast Dissolving – tablets are effervescent. TOP TIP: Dissolve in warm water to speed up dissolution time and improve cleaning ability
- 200 per tamper evident tub, packed 6 per case.
- 18mm diameter allows tablet to fit into a standard trigger spray
- Long shelf life of up to 5 years, Compact & Easy to Store

USES AND EFFECTIVENESS – 3.2g Detergent Chlorine Tablets (1.67g NaDCC, 1,000 ppm/L)

Code M15.SP0539

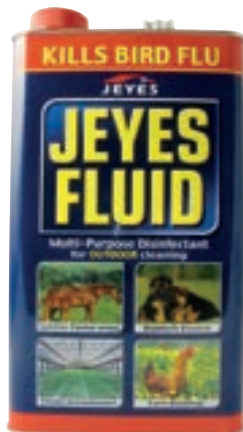


06

**Jeyes Fluid - 5L**

Use Jeyes Fluid for clearing and freshening drains, scrubbing grime, mould and algae off paths or patios and cleaning up hygienically after pets. It's also ideal for cleaning up outdoor furniture, greenhouses and garden tools. It even kills the H5N1 (bird flu) virus. Powerful and versatile cleaner and disinfectant. Use throughout the garden

Code M13.H0188



07

**Sanitising Detergent 5L**

Sechelle Sanitising Detergent 5L - Conforms to BSEN1276 All Types Of Catering & Processing Equipment. Effective In Hard & Soft Water. Foaming. Deep Soil Penetration. Effective Against Gram Negative & Positive.

Code M13.H0911.1



08

**Disinfectant Pine 5L**

Sechelle Pine Disinfectant 5L - A general purpose based pine disinfectant for drains, sinks, toilets and general use. Also helps to clear unpleasant smell from rooms within home or work environments.

Code **M13.H0180**



09

**Pynolic - Phenol based disinfectant 5L**

Pynol™ - 5L Pine Disinfectant with Detergent. Removes general soil from all washable surfaces. Kills bacteria & helps prevent cross infection. Passes EN 1276 at recommended dilution rate & contact time. Ideal in schools, surgeries, nursing homes & leisure centres. Clean, fresh pine fragrance.

Code **M13.H0181**



10

**Oxivir Excel Disinfectant**

Effective against Bacteria, Viruses and Yeast. Delivers excellent cleaning performance including descaling and lime limitation. Excellent user safety profile reduces worker risk and absence. Efficacy proven by compliance with: EN13727, EN13624, EN14476, EN1276 and EN1650

6 x 750ml

Code **M13.941562**

5L

Code **M13.941436**



11

**Safezone Plus**

Virucidal Disinfectant. Broad spectrum activity against viruses, bacteria and yeast. Kills Murine Norovirus, Influenza and MRSA. Passes EN 14476 & EN 1276 Unperfumed formulation.

6 x 750ml

Code **M16.H0235**

5L

Code **M13.H0912.1**



12

**Carpet & Surface Sanitiser Micro Kill 5L**

A revolutionary product that is a certified virucidal cleaner. Micro Kill sanitises all water washable surfaces, including; carpets, upholstery and soft furnishings, hard surfaces, walls, floors, toilets and washrooms etc. Micro Kill is bleach free and non-hazardous. Kills: Swine Flu, HIV, Hepatitis C, MRSA, Clostridium Difficile (C. Diff), Common food poisoning bacteria, mould, mildew, fungi, yeast. On test, this product passes: EN1276 and EN14476.

Code **M29.C0089**



13

**Spray & Wipe Ultra**

Spray & Wipe Ultra is an aldehyde-free, high performance disinfectant with broad spectrum activity against bacteria, yeast and viruses. It is an essential product for the fight against cross infection. Ideal for use around hospitals, care facilities, animal handling, schools, sports facilities, hotels and many other areas or during infection outbreaks. CORONAVIRUS - EN14476 contact time 1 minute

6x750ml

Code **M13.0662**

5 Litre

Code **M13.0663**



14

**Selgiene Ultra – Virucidal Cleaner**

Kills enveloped viruses, including Coronavirus, HIV, Hepatitis C and Influenza viruses. Passes EN 1276 and EN 14476 Manufactured in the UK to ISO 9001, 14001 & 18001. Bleach free, non-hazardous, non-toxic, use on all common water washable surfaces when diluted in use. Selgiene Ultra is pleasantly perfumed and leaves a freshly cleaned fragrance to rooms.

Code **M13.2066**



01



#### Dispenser Soap Liquid Tork Plastic

Tork Liquid and Spray Soap Dispenser. White Versatile dispenser can be used for large range of S1 liquid and S11 spray refills.

Code M07.560000

04



#### Soap Liquid Premium Tork Anti Bacterial White 1L (x6)

Tork Extra Hygiene Liquid Soap. 1000ml (x6). Provides an extra hygienic hand wash where required, like in food processing and kitchens. An extra hygienic hand wash reduces the risk of food contamination associated with poor hand hygiene. Perfect for all hygiene sensitive environments. Free from perfume and colour, reducing risk of skin irritation or allergic reactions.

Code M04.420810

02

#### Soap Liquid Premium Tork Mild Pearl 1L (x6)

Tork Mild Liquid Soap. 1000ml (x6). Premium quality: Contains moisturising and lipid replenishing ingredients. Bottle collapses to 70% volume meaning less wastage. Hygienic: Sealed bottle with single use pump reduces risk of cross contamination when refilling. Easy to use certification: quick and easy to refill. High capacity, 1000 shots.

Code M04.420501



03

#### Soap Liquid Premium Extra Mild Tork White 1L (x6)

Tork Extra Mild Liquid Soap. 1000ml (x6). The Tork Extra Mild Liquid Soap is non perfumed and free from colour to provide for frequent usage as well as reducing the risk of skin irritation. Bottle collapses to 70% volume ensuring less waste. High capacity, 1000 shots.

Code M04.400701



05



#### Aquasana Moisturising Cream

Aquasana Moisturising Hand Cream penetrates the skin's surface intensifying its natural barrier allowing it to retain moisture where its most needed.

- Keeps Hardworking Hands soft and supple
- For hands that are dry and frequently washed.
- Contains Aloe Vera and Vitamin Enriched
- Vegan Friendly
- Only Tested on Humans
- Made in England

Case 12x75ml

Code M05.SP25147

Case 6x500ml

Code M05.SP25148

06

**Q-Det - 1L(x 6)**

Unperfumed Liquid Detergent. Washing up advice on MRLs and QACs  
Concentrated formula for manual cleaning of crockery, glassware and kitchen utensils. Rich, high foam, even under heavily soiled conditions  
Undyed & unperfumed, will not taint or affect beer head retention in drinking glasses. Recommended for general cleaning and for optics.

Code M14.H0199



07

**Q'Sol**

Superior Washing Up Liquid. Concentrated formula for manual cleaning of crockery, glassware and kitchen utensils. Rich, high foam, even under heavily soiled conditions. High dilution rate for extra economy. Recommended for general cleaning of floors, walls, equipment and vehicles

750ml

Code M14.A002AEV

5L

Code M14.H0194



08

**Teepol Multipurpose 5L**

Teepol Multipurpose 5L - pleasantly perfumed, green-coloured detergent designed for a multitude of uses. Safe on most surfaces and ideal for removing food, oils, dirt and grease.

Code M14.H0191



09

**Teepol Gold 5L**

Teepol Gold Detergent 5L - Teepol Gold is a lemon perfumed, super concentrated golden liquid that quickly cuts through fats and grease. Leaves glassware, cutlery, utensils and crockery gleaming.

Code M14.H0192



10

**Teepol L - 5L**

Teepol L is especially suited to laboratory usage and is often recommended as a high quality detergent for cleaning laboratory glassware. A neutral liquid detergent, equally effective in hard, soft or salt water.

Code M14.H0197



11

**Florazol highly concentrated deodoriser/disinfectant 1L**

Florazol® Concentrated Deodoriser. Powerful, highly perfumed, liquid deodoriser. Especially effective in care homes and hospitals. Can be added to solution tank of carpet cleaning extraction machines to overcome malodours.

Freesia

Code M13.H0182FR

Sandalwood

Code M13.H0182SA



12

**Superior Strength Detergent - 5L**

An odourless neutral detergent, ideal for the economic cleaning of dishes and most hard surfaces.

Code M14.H0198-4



13

**Detergent 5L**

Washing Up Liquid 5L - kinder to hands. Super concentrated. Tough on grease. Ph neutral.

Code M14.H0190



14

**Fairy Washing Up Liquid - Original**

Fairy original gives the cleaning power you can always trust for your washing up.

433ml

Code M14.SP21137-433



15

**Lemon Washing Liquid**

Multi Purpose Washing Up Liquid. For manual cleaning of crockery, glassware and kitchen utensils. Tough on grease, gentle on skin. Easy to handle, ergonomic bottle. Fresh lemon fragrance.

Code M14.H0150-12



16

**Kind - 5L**

General Purpose Washing Up Liquid. For manual cleaning of crockery, glassware and kitchen utensils. Rich foam, very effective grease removal. Also ideal for cleaning vehicles and general cleaning. Light lemon fragrance

Code M14.A180EEV



01

**Lift 5L**

Lift® - 5L Heavy Duty Unperfumed Cleaner Degreaser. Powerful multi surface cleaner and degreaser. Cuts through grease and removes ingrained soil. Approved for ALTRO flooring. For use on floors, walls, cooker hoods and ovens. Ideal in kitchens and the food industry.

Code M15.H0200



02

**Mystrol**

Mystrol™ - 5L Concentrated All Purpose Cleaner. Heavy duty cleaner for tough cleaning jobs. Contains a refreshing lemon perfume. Suitable on all washable surfaces. Ideal for spray on wipe off cleaning systems.

750ml x 6

Code M16.H0222

5L

Code M15.H0201



03

**Rubicon 5L**

Rubicon® - 5L Citrus Cleaner Degreaser. Multi-purpose, heavy-duty detergent with citrus fragrance. Removes heavy soiling, oil & grease. Ideal for workshops, factory and garage floors, as well as for removal of body fat and heavy soil in leisure industry. Suitable for concrete, vinyl, rubber, quarry, ceramic tiles, plastic & paintwork.

Code M15.H0203



04

**Clean Fast - Heavy Duty Washroom Cleaner**

Foaming, multi surface bactericidal cleaner. Tangerine perfume. Removes body fat, limescale and heavy soiling. Kills a range of bacteria, including Legionella. Passes EN 1276 at recommended dilution rate. Suitable for ALTRO flooring/ most surfaces.

750ml x 6

Code M16.H0221

5L

Code M15.H0204



05

**Final Touch - highly perfumed, bactericidal washroom cleaner**

Final Touch™ - Washroom Sanitiser. Kills a range of bacteria, including Legionella, MRSA & E-coli. Passes EN 1276 at recommended dilution rate & contact time. Ideal for washbasins, baths, tiles, toilets and floors. Approved for ALTRO flooring.

750ml x 6

Code M16.H0220

5L

Code M15.H0183



06

**Est-eem**

Unperfumed Cleaner Sanitiser. Ready to use formula, kills bacteria and cleans in one application. For food contact surfaces, floors, walls and equipment. Passes EN 1276 at recommended dilution rate & contact time. Ideal in kitchens and the food industry.

750ml x 6

Code M16.H0223

5L

Code M13.H0184



07

**H.S.C Maintenance Cleaner 5L Lemon Perfume**

H.S.C - 5L Hard Surface Cleaner. Efficient and quick acting multi purpose cleaner. Removes stubborn soiling. Suitable on all washable surfaces. Lemon perfume.

Code M15.H0211



08

**Low Foam 5L H/D**

Low Foam Heavy. 5L Multi Surface Cleaner. For combination machines and general cleaning. Removes heavy soiling with one pass of the machine. Ideal for use on factory and warehouse floors. Unperfumed, suitable for use in food preparation areas.

Code M15.H0212



09



### Cream Cleaner 500ml

Quality Lemon Cream Cleaner. Vitreous Enamel Association tested and approved. Superfine chalks reduce risk of scratching. USES: Lemon Cream Cleaner is a premium grade cream cleaner with a light lemon perfume. Formulated to be used on vitreous enamel, Lemon Cream Cleaner is ideal for the rapid cleaning and polishing of all stainless steel, chrome, aluminium, and laminates.

**Code M16.H0232**

10



### Oven Cleaner 5L

Oven Cleaner - 5L Heavy Duty Cleaner. Removes baked on grease and carbon. Thickened, foaming formulation clings to vertical surfaces for better cleaning. Suitable for interior of enamelled ovens and surfaces, griddles and cast iron hobs. Low odour formula, unperfumed and undyed.

**Code M16.H0231**

01

**Everfresh Apple**

Highly perfumed, thickened toilet and Washroom Cleaner. For daily/ routine cleaning of toilet bowls, urinals, sinks and baths. Neutral pH. Clings to vertical surfaces, longer contact time for better cleaning. For porcelain, stainless steel, plastic, enamel, chrome, ceramic and quarry tiles.

1L

**Code M17.H0242**

5L

**Code M17.H0291**

02

**TTC Toilet Cleaner 1L**

T.T.C.™ Thick Toilet Cleaner and Descaler. Powerful, quick acting, hydrochloric acid cleaner with corrosion inhibitors. Removes heavy limescale and stubborn stains. Pleasant perfume. Suitable in all water areas. For use on porcelain, ceramic and quarry tiles.

**Code M17.H0243**

03

**Vanosolve 1L Toilet Cleaner De-scaler**

Vanosolve Maintenance Descaler. Extremely strong, heavy duty toilet cleaner and descaler. Hydrochloric acid, for periodic maintenance and heavy descaling of porcelain toilets and urinals. Ideal in hard water areas. Also suitable for removing mortar and plaster from brickwork and heavy soiling from patios.

**Code M17.H0245**

04

**Hi-Phos**

Heavy Duty multi surface concentrated Washroom and Toilet Cleaner and Descaler. Removes limescale, body fat and heavy soiling. For porcelain, stainless steel, chrome, ceramic and quarry tiles. Especially effective in hard water areas.

1L

**Code M17.H0244-1L**

5L

**Code M17.SP21516**

05

**Orange Maximum Degreaser**

Orange Maximum Cleaner & Degreaser Versatile cleaner for use in a wide range of janitorial cleaning areas. Perfect for cleaning most surfaces. Excellent at lifting grease and carbon from ovens, griddles and barbecues. Effective on PVC, strong enough to remove grease and oil from machinery, heavy deposits from cooker hoods and ducting, but when diluted, is mild enough to also use on fabrics.

6 x 750ml

**Code M15.A112AEVA**

5L

**Code M15.H0216A**

06

**Kleenoff 750ml (x12)**

Kleenoff Acidic Washroom Cleaner. Cleans, disinfects and descales. Kills bacteria - Conforms to EN 1276. Can be applied to all washroom surfaces and fittings.

**Code M17.H0240**

06

**Uritex De-scaler 5L**

Removes scale and stains from toilet bowls and urinals etc. Clears the most stubborn blockage in drains and sewage by dissolving greasy matter and removing limescale. Also a mild disinfectant and contains corrosion inhibitors to reduce attack on metal fittings.

**Code M27.H0311**

08

**One Shot Drain Cleaner 1L**

One Shot Instant Drain Cleaner is a 91% sulphuric acid drain cleaner, which when poured into a clogged drain, will go to work instantly, dissolving grease, rags, soap, paper towels and hair in minutes before emergency treatment becomes necessary. One Shot can also be used as a preventative maintenance product on a regular monthly basis, keeping pipes and drains clear, meaning no need for expensive professional help, should they become clogged.

**Code M27.H0310**

09

**Autosanitiser Refill - PURINEL 310ml**

Purinel is a strong, acid-based cleaner that is designed to sanitize and clean surfaces, kill germs, attack hard water deposits and prevent scale and stains from forming. Although it is an acid-based formulation, it is safe to use and kind to pipework. Purinel is extremely effective in killing a broad spectrum of bacteria very quickly. In the first flush it will remove up to 99.3% of germs and bacteria that are lying on the surface and produces a thick foam that dissipates slowly after every flush.

310ml x 6

**Code M60.VS601-PURINEL**Autosanitiser Digital dispenser  
WxDxH: 142x90x240mm**Code M60.VS600**

10

**Safeseat Toilet Seat Sanitiser dispenser**

The Safeseat® MVP Surface Cleaner Dispenser provides the individual with the opportunity to clean and sanitize surfaces effectively before use. Safeseat® MVP is a positive demonstration of commitment to staff, visitor & customer welfare.

**Code M60.VS500**

11

**Safeseat Toilet Seat Sanitising fluid 365ml**

The Safeseat® MVP formulation is ultra quick drying and effective against all harmful bacteria commonly found on and around toilet fixtures as well as other surface areas (including baby changing units). To use, simply spray onto toilet tissue or cloth and wipe around the affected area. Specially sealed pouches ensure installation of refills is quick, simple and contamination free.

**Code M60.VS501**

13

**Bloo Original 38g (x2)**

Bloo Original in-cistern produces a lasting, clear foam with every flush, leaving your toilet sparkling clean for longer. With Bloo Original in-cistern you can get up to 8 weeks of freshness (each block lasts up to 4 weeks) There is no need to unwrap the in-cistern block as this will dissolve in the water.

10 pack

**Code M17.576121**

14

**Clip-On Toilet Block 40g (x12)**

Sanitiser Toilet Block with Hook/Cage | PDCB free that cleans, foams and freshens using a lavender fragrance. Supplied with hook and cage.

**Code M21.H0261**

15

**Conqueror Toilet Blocks Yellow 3kg**

1066 Conqueror® (Non PDCB) Deodorant Toilet Blocks - Detergent based, for use in urinals and channels. Contains residual perfume to deodorise and detergent to clean. Soluble formulation, to overcome the risk of blocking drains. Dyed yellow, each block weighs approx 25gms.

**Code M21.H0262**

16

**Chunky Channel Dice Ocean Fresh Toilet Blocks 3kg**

PDCB free – contains no Paradichlorobenzene. Detergent based formulation cleans as it fragrances. Helps prevent limescale. Water soluble blocks. Freshens, fragrances and neutralises odours in male washrooms. Biodegradable (Complies with EC648/2004).

**Code M21.H0263-F1**

01

**ESP 400ml**

E.S.P. Evans Spray Polish - Aerosol. Multi surface cleaner and polish in an aerosol. Removes dust, stains and fingermarks. Leaves a deep, long lasting shine and fresh fragrance. Suitable on wood, stainless steel, glass, chrome, paintwork, VDU and TV screens.

Code **M19.H0270**



02

**Clear Glass cleaner**

Window, Glass and Stainless Steel Cleaner. Highly efficient cleaner. Quickly removes grime, leaving a sparkling, streak free finish. For a variety of other surfaces, including chrome, plastic, keyboards, glass screens & surrounds.

750ml

Code **M18.H0260**

5L

Code **M18.H0261**



03

**Mr Sheen Polish 300ml**

Mr Sheen 300ml - Multi surface polish. Cleans wood, glass, metal and plastic. Dust trap technology.

Code **M19.H0274**



04

**LSP**

Multi surface polish, ready to use. Leaves a deep, long lasting shine with pleasant perfume. Anti-static properties, ideal for computer areas, VDU and TV screen. Suitable for wood, veneer, laminate, stainless steel, formica, glass, chrome and paintwork.

750ml

Code **M19.H0271**

5L

Code **M19.A043EEV2.2**



05

**Peek Cream Metal Polish 100ml**

Peek Cream 100ml tube - Multi-purpose metal polish. Cleans, polishes and protects and can be used on all metals, fibreglass, and ceramics.

100ml (x20)

Code **M19.H0276**

100ml (x1)

Code **M19.H0276.1**



06

**Shades Gel Air Freshener 190g**

Shades Professional air freshener is a quick and effective way to freshen any area instantly. The aerosol acts as both an air freshener and an odour neutraliser. Provides a long lasting aroma.

**Code M20.H0245-F1** Summer Flowers

**Code M20.H0245-F2** Citrus Squeeze

**Code M20.H0245-F3** Marine Breeze



07

**Shades Professional Aerosol 400ml**

Shades Professional air freshener is a quick and effective way to freshen any area instantly. The aerosol acts as both an air freshener and an odour neutraliser. Provides a long lasting aroma.

**Code M20.H0240-F1** Marine Breeze

**Code M20.H0240-F2** Summer Flowers

**Code M20.H0240-F3** Citrus Squeeze



08

**Aerosol dispenser 'Select Plus' 243ml**

Rubbermaid Select+ Air Care Dispenser - Unique programming options to suit different applications and air care requirements. 3000 metered sprays. 10 year dispenser guarantee against defects in manufacture. 30/60/90 day, 8/12/16/24hrs a day, 5,6,7 days a week programming.

**Code M60.VS100**

Clean Sense Refill 243ml

**Code M60.VS101**

Aero Odour Neutraliser Refill 243ml

**Code M60.VS103**

Insect Repellent S.W.A.K Refill 243ml

**Code M60.VS104**



09

**Autojanitor Dispenser - White**

Auto Janitor™ cleans and deodorizes toilets and urinals while providing a clean fresh scent for the restroom. Programmable dispenser operates round-the-clock automatically cleaning fixture surfaces, day and night, at 15, 30, or 60 day refill cycles. Concentrated foaming action cleans and reduces bacteria growth everywhere the water goes.

**Code M60.VS300**

Biosense with Mandarin Refill 600ml

**Code M60.VS301**



01

**Salt Tablets Hydrosoft 25kg**

Salt Tablets Hydrosoft. 25kg.

Code M26.SP11926



02

**Salt Granular**

Salt Granular.

10kg

Code K99.SP28165

25kg

Code M26.SP21395



03

**Salt Granular 2kg**

Granular Dishwasher Salt 2kg

Code M25.SP21011



04

**Auto Dishwash Extra 5L**

Dishwash Extra 5L - For Automatic Dishwashing Machines. Concentrated, low foaming detergent. Helps reduce and resist tannin and prevents re-deposits of soil and limescale. Suitable for all types of single and multi tank automatic machines. For use in all water conditions, especially effective in extreme hard water.

Code M25.H0286



05

**Dishwasher Multi 5L**

For Automatic Dishwashing Machines. Low foaming detergent. Helps to prevent scale formulation and re-deposits of soil. Suitable for all types of single and multi tank automatic machines. Ideal in soft to medium water conditions.

Code M25.A070EEV2



06

**Glasswash Extra 5L**

Glasswash Extra 5L - For Automatic Glasswashing Machines. Concentrated, low foaming detergent prevents the build-up of scale on glasses. Removes general soiling from glasses, leaves them thoroughly clean and bright. Does not affect beer head retention. For all types of glasswashing machines, in all water conditions, particularly hard water.

Code M26.A048EEV-2



07

**Rinse Aid 5L**

Rinse Aid 5L - For Automatic Machines. Concentrated low foaming surfactant to promote rapid drying. Eliminates water spotting and provides a sparkling, streak free result. For single and multi tank automatic dish and glasswashing machines. Effective in all water conditions.

Code M25.H0301



08

**Autoglass Wash 5L**

Glasswash 5L - For Automatic Glasswashing Machines. High active, low foaming detergent. Removes general soiling from drinking glasses, leaves them clean and bright. Does not affect beer head retention. For use in all types of glasswashing machines, in all water conditions.

Code M25.H0302



09

**GLAZE 4-in-1 Dishwasher Powder 5kgs**

GLAZE Dishwasher Powder™ 5kgs - Machine Dishwash Powder. High quality, low foaming powder with built in detergent, glass protection and rinse aid. Provides stain and streak free finish to crockery, glassware and utensils. Easily removes protein and greasy food deposits. Effective in all water conditions.

Code M25.H0300



10

**Glaze 5-in-1 Dish Wash Tablets. 100 per pack**

Glaze 5 in 1 Dishwasher Tablets - Removes difficult foodstuffs to ensure crockery, cutlery and glassware are left sparkling. Built in salt action, glass protection and rinse aid. Leaves stainless steel items with an extra sparkle. Tablets are individually wrapped and contain a fresh lemon perfume.

Code M25.C021AEV



11

**Destain 5kg**

Destain 5kg - Coffee Stain and Tanin Remover. Quick dissolving, unperfumed powder. Cleans and destains in one operation. For use on tea urns, coffee making machines and vending machines. Effective in all water conditions.

Code M26.C001AEV

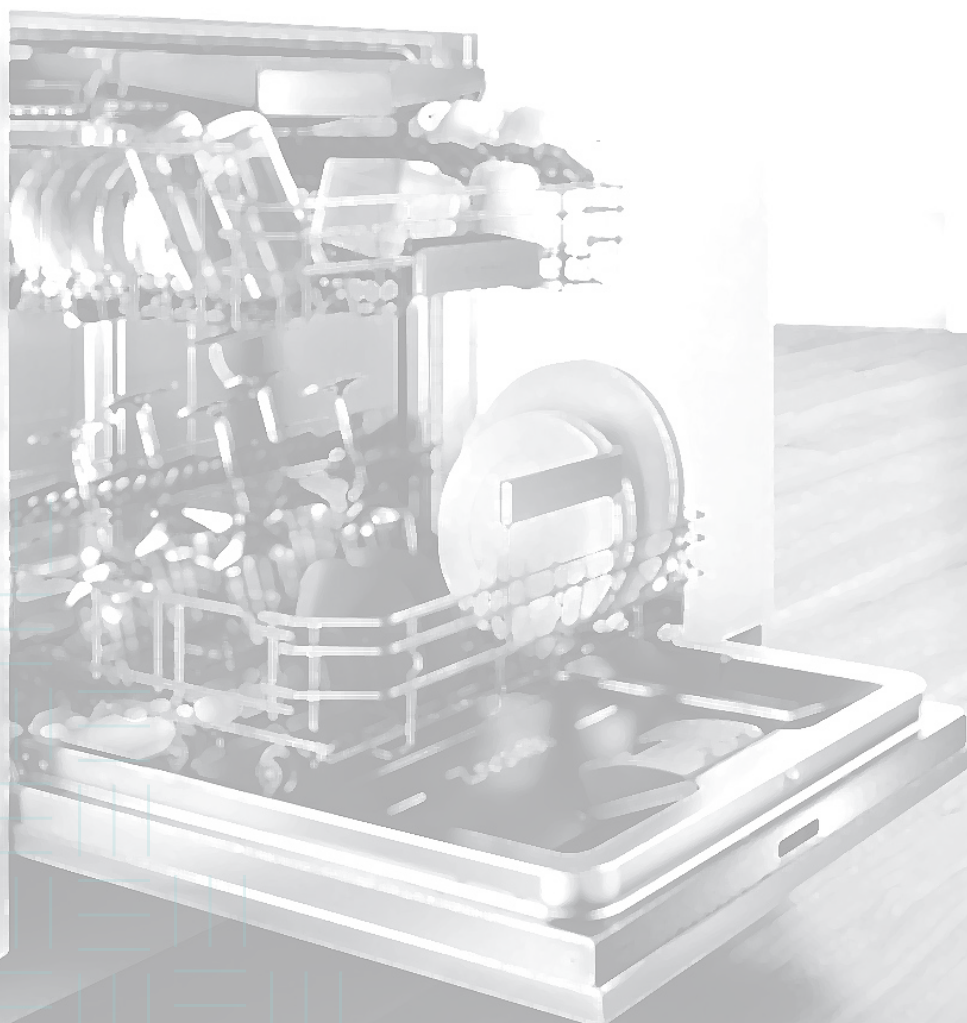


12

**Finish Dishwasher Tablets**

Revolutionary Pre-Soaking Powerball fizzes into action dispersing deep cleaning agents, removing the toughest food residues. Salt and Rinse aid action rinses away residues and helps to eliminate spots and film, delivering sparkling shine. Each tablet is individually wrapped for freshness.

M25.SP21784



01

**BRI Biological Washing Powder 10kg bag**

BRI Non-Bio Washing Powder 10kg bag - A concentrated laundry powder that contains a good balance of tough action performance cleaning agents. This powerful formulation has the ability to achieve very high standards of processing giving excellent results.

Code M25.SP23020BAG



02

**SO SOFT BIO Washing Powder 9kg**

SO SOFT BIO Washing Powder 9kg - Jeyes SoSoft Washing Powder is formulated to work effectively at low temperatures. Choose Biological for powerful cleaning on whites and colours. Removes stubborn stains. Suitable for hand washing.

Code M25.H0280



03

**SO SOFT NON BIO Washing Powder 9kg**

SO SOFT NON BIO Washing Powder 9kg - Jeyes SoSoft Washing Powder is formulated to work effectively at low temperatures. Choose Non-biological which is enzyme-free and kinder to sensitive skin.

Code M25.H0282



04

**Super Fabric Softener 5L**

Leaves fabrics fragrantly soft - Helps reduce static build up  
Application: Suitable for use in all types of laundry machines and all water conditions

Code M25.H0284



05

**BRI NON-Bio Washing Powder 10kg tub**

BRI Non-Bio Washing Powder 10kg tub - A concentrated laundry powder that contains a good balance of tough action performance cleaning agents. This powerful formulation has the ability to achieve very high standards of processing giving excellent results.

Code M25.SP23020-NB



06

**BRI Biological Washing Powder 10kg tub**

one3five Bio 10kg tub - Bio Laundry Powder. Low foam, phosphate free, biological powder for professional use. Up to 135 washes per carton. Excellent cleaning action at all temperatures, in all water conditions. Contains coloursafe oxygen based bleach and enzymes.

Code M25.SP23020



07

**Extraction Carpet Shampoo 5L**

Extract Pro 5L - Carpet and Upholstery Shampoo. For use with carpet extraction machines. Removes dirt & stains & leaves fabrics clean & fresh. Provides anti-soiling protection. Allows dry soil to be easily vacuumed.

Code M29.H0380



08

**Spotlight 750ml**

Spot Light™ 750ml - Spot and Stain Remover for Carpets. Highly efficient, ready to use formulation. Produces an absorbent foam to emulsify soil. Quickly removes difficult stains and spots. Suitable on colourfast carpets and furnishings.

Code M29.H0382



09

**Evans Defoamer 5L**

Defoamer 5L - For Use with Extraction Machines. Highly concentrated liquid, to add to waste tank of extraction machines. Very economical in use. Reduces downtime of carpet machines due to excessive foam. Effective in a variety of applications.

Code M29.C036EEV

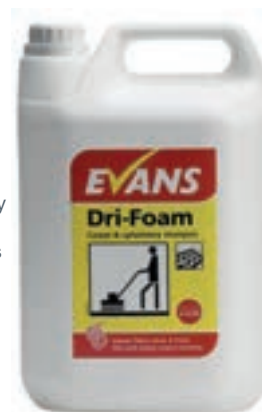


10

**Dri-Foam Carpet & Upholstery Shampoo 5L**

Dri-Foam Carpet and Upholstery Shampoo 5L - Produces a rich, deep cleansing foam. Emulsifies soil and stains. Leaves carpets and fabrics clean and bright. For use with carpet or rotary machines.

Code M29.H0290



11

**Easy Strip 5L Floor Polish Stripper**

Easy Strip™ - 5L Fast Acting Floor Polish Stripper. Powerful, quick effective action. Removes stubborn polish and heavy build-up. For use with a mop or floor machine. Does not need neutralising - saves time.

Code M29.H0350



12

**Sure Strip 5L**

Sure Strip™ - 5L Floor Polish Stripper. Removes stubborn and resistant polish film. Very effective action. Use in conjunction with a floor machine. Also suitable for cleaning heavily soiled surfaces.

Code M29.H0352



13

**Enhance 5L**

Enhance™ - 5L Ultra High Solids Floor Polish. Provides an extra durable, wet look finish. Ideal for prestigious floors. Excellent scuff and slip resistance. Suitable for very heavy traffic areas.

Code M29.H0355



14

**Easishine 5L**

Easy Shine - 5L Floor Polish and Maintainer. Versatile product, polishes and maintains floors. Produces a slip resistant gloss finish. Clean, fresh, floral fragrance. Suitable for non-mechanised maintenance.

Code M29.H0357



01

**Clean and Shine 5L**

Clean & Shine - 5L Perfumed Floor Maintainer. Removes scuff marks and restores gloss finish. Increases slip resistance and polish durability. Suitable for damp mopping and spray burnishing. Contains a fresh, floral perfume.

Code M29.H0370



02

**EMC Safety Floor Cleaner 5L**

E.M.C.™ Plus - 5L All Purpose Cleaner and Degreaser. Heavy duty alkali cleaner. Rapidly removes grease and heavy soil. Unperfumed - ideal in kitchen areas. Especially suitable for cleaning safety & difficult to clean floors. Approved for ALTRO flooring.

Code M29.H0371



03

**Pine Gel - multi-surface cleaning gel 5L**

Neutral Cleaning Gel. Multi purpose cleaner and deodoriser. Leaves a pleasing pine fragrance. Removes general soil from all washable surfaces. Ideal for damp mopping or spray cleaning

Code M13.H0185



04

**Lemon Gel 5L**

Lemon Gel - 5L Neutral Cleaning Gel. Multi purpose cleaner and deodoriser. Distinctive long lasting citrus fragrance. Removes general soil from all washable surfaces. Ideal for damp mopping or spray cleaning.

Code M29.H0378



## Mopping

The efficiency of the flat mopping solution as opposed to traditional methods is fast becoming a preferred, more cost effective, hygienic solution.

Typical savings:

- Over 50% saving in labour your most expensive commodity.
- 51% faster than a Kentucky mop and 62% faster than socket mops.
- Dries 50% quicker.

Flat mopping as opposed to traditional methods can also help **reduce**:

- Chemical costs up to 90%
- Laundry costs up to 45%
- Water consumption up to 90%

This is achieved with a microfibre system that will remove 99.99% bacteria with up to 1,000 wash guarantee.

Floors dry quicker and are back in use faster too.

# 95%

of the total cost is related to labour/cleaning staff.

# 4.5%

of the total cost is related to cleaning machines, water/chemicals.

# 0.5%

Less than 0.5% of the total cost is related to utensils.

# e:dose



## COLOUR CODED SUPER CONCENTRATE RANGE

### EC2 DEGREASER



#### CONCENTRATED HEAVY-DUTY CLEANER DEGREASER

Unperfumed formulation which removes heavy soil and grease from hard, washable surfaces. Ideal for use in all general industry, especially catering, food processing and preparation areas.

- Multi-purpose, multi-surface cleaner degreaser.
- Neutral pH formulation; safe to use on aluminium.
- Unperfumed; developed for use in both catering and general industry.
- Easily removes ingrained soil and heavy grease from a variety of hard washable surfaces.
- Ideal for use on cooker hoods, ovens, floors and walls.

### EC4 SANITISER



#### CONCENTRATED UNPERFUMED CLEANER SANITISER

Kills bacteria and removes general soil from hard, washable surfaces. Ideal for use in catering, food processing and preparation areas, healthcare establishments, nursing homes, schools, leisure centres and wherever hygiene is of the utmost importance.

- Multi-surface, unperfumed cleaner and disinfectant.
- Kills bacteria and cleans surfaces in one operation.
- Passes EN 1276 under dirty conditions at 1:60 with a 30 sec contact time or at 1:100 in 5 min.
- Unperfumed; suitable wherever food is handled, prepared or served.
- Ideal for use on worktops, chopping boards, tables, refrigerators and kitchen equipment.

### EC6 ALL-PURPOSE



#### CONCENTRATED ALL-PURPOSE HARD SURFACE CLEANER

Removes light and general soil from all hard, washable surfaces. Suitable for wiping surfaces and damp mopping vinyl, terrazzo, marble, rubber and polished floors. Also ideal for spray cleaning floors in conjunction with a high speed floor machine.

- Multi-surface hard surface cleaner.
- Contains a clean, refreshing fragrance.
- Neutral pH formulation; suitable for all daily cleaning tasks.
- Ideal for use on glass, mirrors, paintwork, laminate, veneer, plastic and all hard floor surfaces.
- For use in all industry, especially the professional contract office cleaning market.

### EC7 HEAVY-DUTY



#### CONCENTRATED HEAVY-DUTY HARD SURFACE CLEANER

Removes general and heavy soil from all hard, washable surfaces. Formulated for use in dirty or busy traffic areas and surrounds. Suitable for wiping surfaces, damp mopping and spray cleaning unpolished floors. Also highly recommended for use in scrubber dryer combination floor machines.

- Multi-surface heavy-duty cleaner.
- Alkaline pH formulation; suitable for those difficult daily cleaning tasks.
- Contains a pleasant, fresh fragrance.
- Suitable for use on vinyl, rubber and concrete floors.
- The correct choice for busy shopping centres and factories.

### EC9 WASHROOM



#### CONCENTRATED PERFUMED WASHROOM CLEANER AND DESCALER

Cleans and descales washbasins, baths, toilets, urinals and shower areas. It has a distinctive floral fragrance and is suitable for damp mopping ceramic floor tiles and wiping a variety of surfaces including porcelain, stainless steel, chrome and wall tiles.

- Multi-surface cleaner and descaler.
- Removes soil, soap scum and limescale deposits in one operation.
- Leaves a long lasting fresh, floral fragrance.
- Suitable for use on a variety of hard, washable surfaces.
- For use in conjunction with our foaming trigger spray or flip top closure toilet cleaning bottle.

For more information  
please contact sales  
on **01202 718000**

01

**EC2 Degreaser, Heavy Duty Concentrate Food Safe**

EC2 Degreaser Heavy Duty Cleaner & Degreaser. Easily removes ingrained soil & heavy grease from a variety of washable surfaces. Unperfumed: formulated for use in the food and general industry. Low dosage, very economical in use super concentrate. Colour coded trigger bottles available.

1L

**Code M28.A107AEV**

5L

**Code M28.A107EEV**

EC2 Degreaser Spray Bottle (trigger sold separately-below)  
**Code M28.CR7500**

EC2 Degreaser Jet Spray Foaming Trigger  
**Code M27.CL0950**



02

**EC4 Sanitiser Multi Surface Cleaner & Disinfectant**

EC4 Sanitiser Multi Surface Cleaner & Disinfectant. Removes soiling and kills bacteria in one operation. Passes EN 1276 under dirty conditions at 1:60 with 30sec contact time. Low dosage, very economical in use super concentrate. Colour coded trigger bottles available.

1L

**Code M13.A133AEV**

5L

**Code M27.A201EPN02.1**

EC4 Sanitiser Spray Bottle (trigger sold separately-below)  
**Code M27.CR7600**

EC4 Sanitiser Jet Spray Foaming Trigger  
**Code M27.CL0950**



03

**EC6 All Purpose Interior Hard Surface**

EC6 All-Purpose All Purpose Interior Hard Surface Cleaner. Removes daily and general soil. For use on paintwork, laminate, glass, mirrors and hard, washable surfaces. Ideal for damp mopping and spray cleaning polished floors. 1 litre pack produces upto 100 spray bottles or 50 buckets of solution.

1L

**Code M29.A033AEV**

2 x 5L

**Code M29.A033EEV**

EC6 All-Purpose Spray Bottle (trigger sold separately-below)  
**Code M29.CR8000**

EC6 All-Purpose Jet Spray Foaming Trigger  
**Code M27.CL0950**



04

**EC7 Heavy-Duty Hard Surface Cleaner**

EC7 Heavy-Duty Heavy Duty Hard Surface Cleaner. Removes general and heavy soil. For all washable surfaces, vinyl, rubber and concrete. Ideal for spray cleaning unpolished floors in conjunction with high speed floor machine or through scrubber dryer. 1 litre pack produces upto 100 spray bottles or 50 buckets of solution.

1L

**Code M29.A041AEV**

5L

**Code M29.A041EEV.1**

EC7 Heavy Duty Spray Bottle (trigger sold separately-below)  
**Code M29.CR7800**

EC7 Heavy Duty Jet Spray Foaming Trigger  
**Code M27.CL0950**



05

**EC8 Air Freshener and Fabric Deodoriser**

Contains a patented ingredient to counteract malodours. Delivers a long lasting fragrance, with notes of lime, jasmine and rose. Ideal on fabrics which cannot be cleaned in a washing machine. 1 litre makes up to 50 spray bottles of solution

1L

Code **M20.H0255**

EC8 Washroom Spray Bottle and adjustable spray head

Code **M20.SP29226**



06

**EC9 Washroom Cleaner & De-scaler**

EC9 Washroom Bactericidal Cleaner and Descaler. For cleaning washbasins, baths, tiles & shower areas. Passes EN 1276. Kills bacteria under dirty conditions at 1:60. Suitable for porcelain, stainless steel, chrome & ceramic. 1 litre pack produces up to 100 spray bottles or 50 buckets of solution.

1L

Code **M27.A057AEV**

5L

Code **M27.A202EPN02.1**

EC9 Washroom Spray Bottle (trigger sold separately-below)

Code **M27.CR7900**

EC9 Washroom Jet Spray Foaming Trigger

Code **M27.CL0960**



07

**e:dose Wall Bracket**

Bracket for 1lt and 5lt e:dose Bottles. Single wall mounted bracket for e:dose dosing bottle. White plastic coated metal. Enables bottle to be positioned next to e:dose wall dispenser

1L Wall Bracket

Code **M16.D023AEV**

5L Wall Bracket

Code **M07.SP20929**



08

**e:dose Dispenser**

e:dose Trigger and Bucket Dispenser Super Concentrate Dosing System. No plumbing or wiring needed - each push provides 1 exact dose. Can be used with e:dose EC2, EC4, EC6, EC7 & EC9. ID labels available.

Trigger

Code **M16.C087AEV**

Bucket

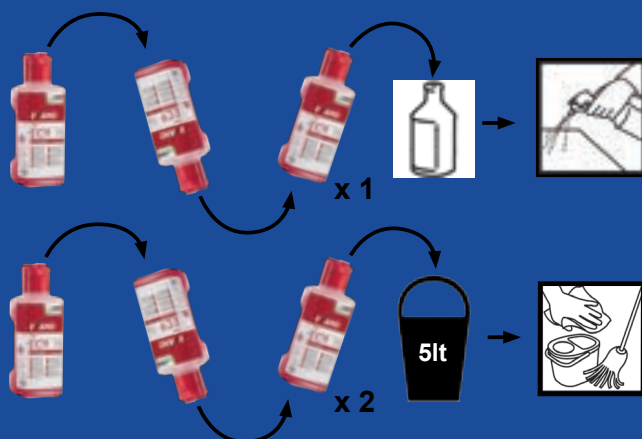
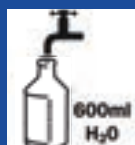
Code **M16.C088AEV**



**concentrates**

Always read the product label /  
Always adhere to health and saf  
Always wear appropriate person

**How to use a dosing bottle**



01

**Portable Extraction machine Steempro Powermax**

Professional carpet & upholstery cleaning machine - The Steempro Powermax combines dual 3-stage vacuum power with a long life 150psi induction diaphragm pump. The ideal high power carpet extractor for the single operator, the Steempro Powermax incorporates a large 35 litre solution tank in a compact body design for maximum efficiency and portability. With an internal "whisper quiet" silencer and upright mounted motors with exclusive intercooler unit the Steempro Powermax represents the state-of-the-art in professional carpet soil extractors. The machine comes complete with hoses and 2-jet Glidemaster stainless steel wand.

**Code M56.SX2100**

02

**Galaxy Portable Extraction Machine c/w Kit**

The Galaxy portable extractor is the perfect machine for residential and institutional cleaning of carpets, rugs and upholstery. With a compact design and lightweight yet durable hi-tech construction the Galaxy packs a powerful punch. With a powerful 2-stage vacuum and 120psi pump, the Galaxy delivers the same cleaning performance as much larger machines. The Galaxy is perfect for in-house cleaning as well as car valeting, spotting and small area commercial cleaning. Lightweight and compact design fits easily into small vehicles.

**Code M32.AX500**

03

**Prochem Fivestar floor cleaning machine**

A highly compact and portable high performance carpet and floor cleaning machine, the Prochem Fivestar upright extractor enables any operator to achieve professional results and quick drying with the minimum of effort. The Fivestar can also clean fabric upholstery with the optional upholstery tool as well as hard floors, tiles and grout with the built in All-Floor feature. A completely self-contained design, combining a powerful pump and vacuum system with a power driven self-adjusting brush, means that there are no hoses or wands to attach.

**Code M32.TR300**

04

**Truvox MultiWash 340. Floor Scrubber Drier**

The Multiwash scrubber drier is a multi-purpose quick and effective floor cleaning machines that washes, mops, scrubs and dries on both hard and soft floor coverings in one single pass. Features - High-speed productivity. Entrance matting. Excellent manoeuvrability and productivity. Quiet in operation. Accessible and removable tanks for fast filling and emptying. Leaves floors ready to walk on in minutes. Choice of brushes for normal, maintenance cleaning or intensive scrubbing.

**Code M63.MW340**

05

**SEBO Vacuum Cleaner. Dart 1**

The SEBO DART 1 has been designed to be light and easy to use making it highly manoeuvrable. It cleans flat to the floor with and comes with a SEBO ET-1 175w power head for maximum cleaning power. It can also be converted to a floor polisher or suction vacuum cleaner with optional floor heads. Features - Twin motor, Separate suction and brush motors, Suction motor 1000 watt, Brush motor 175 watt, "Flex" neck for manoeuvrability, On-board hose, Crevice nozzle, 4-level height adjustment, Auto shut off, if brush jammed, S-CLASS filtration. 31cm brush head.

**Code M32.SP28732**



**Multi-layer dustbags.**

Available as per description



06

**SEBO Vacuum Cleaner. Dart 2**

The SEBO DART 2 is designed to be agile, user-friendly and to achieve superb cleaning results quickly, easily and economically. With a 37cm brush width, the DART 2 is ideal for medium sized areas. It can also be converted to a floor polisher or suction vacuum cleaner with optional floor heads.

**Code M32.SP28734**



**Multi-layer dustbags.**

Pack of 10. Genuine SEBO product. Genuine Sebo bags retain bacteria, allergens and other potentially harmful substances. The bags can be sealed for hygienic disposal.

**Code M32.SP28733.1**



07

**SEBO Vacuum Cleaner. BS36**

With a 36 cm cleaning head the BS 36 COMFORT can clean a wide range of facilities and the replaceable brush strips make it economical to run for long periods. Able to clean flat to the floor, it can reach under furniture and its L-shaped head lets it clean under radiators. Features - Twin motor, Separate suction and brush motors, Suction motor 1000W, Brush motor 175W, Timing belt with electronic protection, Electronic guidance for optimum brush height, Changeable brush strip, Housing of strong ABS, Cleans when flat, Hose with integrated wand, Bag full warning light, Trap door for easy blockage clearing.

**Code M32.SP28730**

**SEBO Vacuum Bags.**

Compatible with BS36 and BS46

**Code M32.SP28733.1**

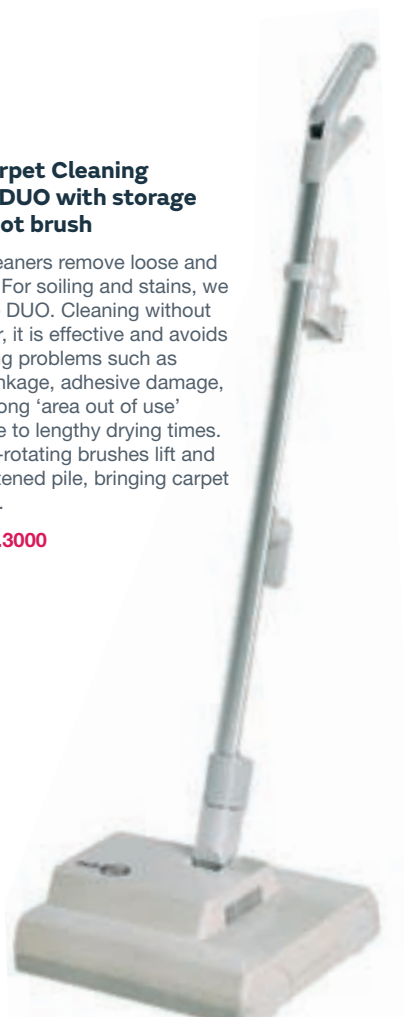


08

**SEBO Carpet Cleaning Machine DUO with storage tray & spot brush**

Vacuum cleaners remove loose and dry matter. For soiling and stains, we provide the DUO. Cleaning without using water, it is effective and avoids wet cleaning problems such as carpet shrinkage, adhesive damage, smell and long 'area out of use' periods due to lengthy drying times. The contra-rotating brushes lift and restore flattened pile, bringing carpet back to life.

**Code M32.3000**



01

**Numatic NRV240-21 ProFlo Vacuum**

The Numatic 240 series has a new, improved two-stage motor, this version of the famous Henry vacuum cleaner is identical to the Henry except that it benefits from an extended skirt (see images) this over-moulded design helps to protect paintwork and skirting etc, complete with bright aluminium tubes, other kit contents are the same as with the Henry, including all you need to give you all the reputation of the Henry but to commercial standards for the ultimate vacuum cleaner. Labelled 'Numatic' the M32.NRV240 is supplied with Henry's famous trademark - the happy smiling face. The 240 series vacuum cleaner is approved to more than 10 stringent international standards. Fitted with a commercially rated 580w motor turbine the M32.NRV200 has more than enough power for almost every cleaning application from rubble to dust, with a large 9 Litre capacity.

**Code M32.NRV200****Henry Vacuum Bags**

Pack of 10

**Code M32.NVM1CH**

02

**Numatic Wet & Dry Vacuum Cleaner Blue A11. 32mm. 110V**

All machines are wet or dry and the change from one to the other is designed to be simplicity itself exchanging a dry filter for wet safety float valve and a change of floor nozzle, or vice versa. Although twice the capacity we have added a folding handle design allowing easy movement when in use whilst also allowing compact storage. The accessory kit provides tools for both wet and dry operation with stainless steel tube sets as standard.

**Code M32.WV470**

03

**Numatic Wet Pick up Vacuum Cleaner Grey/Black 230V**

This is the biggest practical machine in the wet pick-up range incorporating a fully integrated submersible pump system allowing for continuous suction and pump out facilities as demanded by the fire service, flood damage, flat roofing and salvage contractors. The Structofoam power head incorporates two Twinflo' specification bypass motors; plugged replaceable cable repair system and handle mounted control centre for both suction and pump operation. Accessories supplied are to full 38mm (1 1/2") standard with long hoses, stainless steel tubes, Structofoam nozzle and a standard 10m (33') discharge hose to get all that water away!

**Code M32.WVD2000AP**

04

**Numatic Hurricane HFM 1015 Floorcare machine Blue/Grey. 230V**

The HFM1015 provides superb performance with a full 450mm brush range together with a 400mm PadLoc pad drive system. All HFM models incorporate our ATC (Automatic Torque Control) monitoring and balancing operational power input throughout the cleaning cycle. The 450 ranges can be used with our optional wet solution tank for scrubbing duties, or the Dustrol vacuum accessory kit, allowing vacuuming and polishing simultaneously where applicable. The Hurricane motor concept is designed to keep its "Cool" under continuous and arduous operation whilst its seamless power transmission to the floor is via our long life, oil filled, low load planetary gearbox. The Hurricane range is available with a selection of kits, images may show optional items.

Code M32.HFM1015



05

**Numatic 'Baby' Combination Machine 230/115V Model TT 1840**

The TwinTec 1840 cable machine has been designed to address the question of size being exceptionally compact, yet with performance equal to bigger machines.

The compact design really does allow this machine to clean in areas normally cleaned by hand, yet 30% to 40% faster and better.

- Convenient - Fold flat design for easy transport from site to site.
- Rugged Construction - Tough all steel chassis design.
- Fully Adjustable Handle - For the perfect working position.
- Low Noise - Quieter, unobtrusive design means true versatility.
- Easy Change - Easy one handed brush or pad changing.

Code M32.TT1840



06

**Numatic Scrubber Drier Model TT4045 Twintc Mains**

Outstanding specification with mains power, 40L capacity and 450mm scrub width, making for the highest standard both in design and equally in terms of performance.

The big advantage of cable machines is the amazing power provided by mains operation, three times that of battery machines

- TwinFlo Vacuum Motor - Provides exceptional wet pick-up.
- Structofoam Tilting Brush Deck - Making brush changes quick and simple.
- Planetary Gearbox - Longlife, oil filled, low load gearbox.
- Simple Control - Simple on / off trigger controls.
- Polyform Tanks - Heavy duty clean and dirty water tanks.
- Flexifill System - Easy filling and emptying system.
- Structofoam Chassis - Incredibly tough and chemical resistant Stuctofoam moulded chassis.

Code M32.TT4045



# V-TUF<sup>®</sup> DUST EXTRACTORS, WET & DRY VACUUMS

## COMBAT DUST



WET & DRY

01

### MAMMOTH 90 Litre Wet & Dry

Anti-static 2.5m hose -No bags required  
Extra long 8m cable - steel tubes  
Impact resistant construction  
240V model - 3000W total output. 3x quality, replaceable 'two stage' motors  
110V model - 2000W total output 2x quality, replaceable 'two stage' motors



Code M68.0248



Available on request



DUST EXTRACTION

02

### MINI M Class Dust Extractor

HEPA H13 filtration 99.9% efficient.  
Removable, washable filter unit.  
Universal power tool adaptor.  
32mm Accessories Kit.  
Hose extends to up to 3.5m.  
Extraction velocity monitor.  
Integrated filter shaker system.



Code M68.0246



Available on request

Your health and well-being is paramount – if you can see dust then you're definitely breathing in dust, which can lead to many serious lung illnesses and diseases.



**M Class** < 0.1% Dusts with maximum allowable concentrations (MAC)  $\geq 0.1 \text{ mg/m}^3$

**M Class** – for hard woods, board materials, concrete and brick dust.



DUST EXTRACTION



RECHARGEABLE BATTERY

03

**RUCKVAC M Class Dust Extractor**

POWERED BY A 36V LITHIUM BATTERY. 60 minute run time - charge time 2.5h. HEPA H13 filtration 99.9% efficient. 300W brushless digital motor. Universal power tool extraction adaptor. Remote on/off/switch. 3m anti-static hose. Adjustable carry straps.

Code M68.0244



‘The HSE reported that there were around 43,000 individuals suffering breathing and lung problems in the UK.’



WET & DRY

04

**MAXI 80 H Class Dust Extractor**

Large 90 litre tank capacity. 2000W twin turbine motor. HEPA H14 filtration 99.995% efficient. Removable, washable filter unit. 32mm Accessories Kit. Hose extends to up to 3.5m.



240V MODEL

Code M68.3500

110V MODEL

Available on request



EXTRACTION SYNC

05

**MIDI Syncro**

INDUSTRIAL DUST EXTRACTOR WITH SYNCHRONISED POWER TOOL EXTRACTION

Universal power tool extraction adaptor. HEPA H14 filtration 99.995% efficient. 400W twin turbine motor. Removable, washable filter unit. 32mm accessories kit.

240V MODEL

Code M68.0240

110V MODEL

Available on request

H Class < 0.005% Dusts with maximum allowable concentrations (MAC) < 0.1 mg/m<sup>3</sup>

H Class – highly carcinogenic dusts, asbestos, formaldehyde, mould, germs and bacteria.



01

**Refuse Bag Black (x 200)**

18x29x38.

160g

Code **M40.H0501BK**

200g Medium Duty

Code **M40.H0502-BK**



02

**Compactor Sack (x 100)**

Compactor Sack.

Black - 20x34x47cm

Code **M40.H0504.1**

Red - 20x34x47cm

Code **M40.H0505R**

Clear - 20x34x47cm

Code **M40.H0519-CL**

Orange - 20x35x40cm

Code **M40.SP27516**

Green - 20x35x40cm

Code **M40.SP28825**



03

**Swingbin liners**

Flat Pack White x 500

Code **M40.H0506**

Flat Pack White x 1000

Code **M40.H0506B**

Roll White x500

Code **M40.H0506-ROLL**

Flat Pack Blue x 500

Code **M40.H0507**



04

**Pedal bin bags (x 1000)**

White. 11x18x18"

Flat Pack

Code **M40.H0508**

Roll

Code **M40.H0508-ROLL**



05

**Square bin liners (x 1000)**

White Heavy Duty. 15x24x24.

Code **M40.H0509**



06

**Dissolvo Laundry bags (x 100)**

Dissolvo Laundry bags.

Code **M40.H0510**



07

**Micellaneous Bags**

Paper Garbage Bag - 405x230x990 (x50).

Code **M40.SP23183**

Compostible Food Waste Liner - 20x34x42 (x200).

Code **M40.BIO.140**

Polyprop Sand Bag - 13x30"

Code **M40.SP27059**

Yellow clinical waste sack - 5kg - 280x430x660mm (x500)

Code **M40.SP28165**

Yellow clinical waste sack - 12kg - 380x710x980mm (x500)

Code **M40.SP28166**

Yellow Tiger Stripe sack - 18x29x26mm (x200)

Code **M40.SP182926**

Yellow Tiger Stripe sack - 18x29x39mm (x200)

Code **M40.SP182939**

08

**Coloured Sack (x 200)**

Medium Duty Sack. Flat Packed.

Green

Code **M40.H0501G**

White

Code **M40.H0501WH**

Orange

Code **M40.H0501OR**

Yellow

Code **M40.H0501Y**

Red

Code **M40.H0501R**

Blue

Code **M40.H0501B**



Many other sizes available and stocked - Please ask.

09

**Bullet Bin 40L**

40L capacity Bullet bin. Painted steel body and plastic dome with stainless steel push flap. H 698 x Dia. 315mm.

Black

**Code M41.H0540-BK**

Blue

**Code M41.H0540-BL**

Platinum Grey

**Code M41.H0540-PG**

Stainless Steel

**Code M41.H0540-SS**

White

**Code M41.003W**



10

**Bullet Bin 55L**

55L capacity Bullet bin. Painted steel body and plastic dome with stainless steel push flap. H 844 x Dia. 315mm.

Black

**Code M41.H0541-BK**

Blue

**Code M41.H0541-BL**

Platinum Grey

**Code M41.H0541-PG**

Stainless Steel

**Code M41.H0541-SS**



11

**Sack holder free standing**

Hands free operation. Silent closing as standard. Conforms to NHS HTM WM0701 colour coded waste segregation. Epoxy coded body, frame and lid. All units fitted with wheels. Large 80L. White.

**Code M41.H0531**



12

**Dustbin with lid**

Black. 94L - 110L.

Black

**Code M41.H0520**

Green

**Code M41.H0521**



13

**Dustbin 80L**

This 80 litre dustbin with lid is ideal for offices, schools, hospitals and other commercial companies. The bin is manufactured in the United Kingdom, and offers a generous 80 litre capacity. Materials: Plastic.

Dimensions: H70 x W47 x D35cm.

**Code M41.H0522**



14

**Galvanised Dustbin and Lid**

Galvanised dustbin complete with lid. Size: 450mm Diameter.

**Code M41.H0523**



01

**Office Waste Bin**

15L. Plastic. Green.

Code **M41.H0553**



03

**Mesh Waste Bin**

Circular mesh waste bin.

Code **M41.H1544**



04

**Pedal Bin PVC White**

16L Pedal Bin, Plastic. White. Dimensions - H430 x W290 x D250mm.

Code **M41.H0545-16L**

15L Pedal Bin, Plastic. White. Dimension - H368 x W305 x D305mm.

Code **M41.H0545-15L**



02

**Exterior Wall Mounted Ashtray**

Wall Mounted Ashtray - outdoor. Keep entrances and smoking areas free from cigarette litter, this wall mounted ashtray encourages smokers to dispose of cigarettes responsibly. Lift-out butt bin for easy emptying. Lockable (2 keys supplied) Complete with wall fixings. Dimensions: H: Back 28.5cm Front 26cm W: 26cm D: 11cm.

Code **M41.H0535**



05

**Pedal Bin Steel 12L**

Pedal bin 12L, Steel body/lid, plastic liner, metal hinge. Dimension: 40 x 26.5 x 26.5cm.

White  
Code **M41.H0546**

Chrome  
Code **M41.H0547**



06

**Huskee Bin and Secure push-fit lid**

Huskee Square Bin - Space saving, non-slip handles, rounded corners for easy cleaning. Colour coded to separate waste materials. 120L. H: 57cm W: 55cm D: 55cm. Push-lids sold separately.

Grey  
Code **M41.H0565GR**

Red  
Code **M41.H0565RD**

White  
Code **M41.H0565WH**

Grey push-fit lid  
Code **M41.H0566GR**

Red push-fit lid  
Code **M41.H0566RD**

White push-fit lid  
Code **M41.H0566WH**

Huskee Square Dolly  
Code **M41.H0567**



07

**Swing Bin Complete Hygiene 50L**

50L Lucy Swing Top Bin - Ideal for virtually any internal space - offices, hospitals, canteens, kitchen areas. One-piece moulded smooth sided polypropylene, easy to clean and hygienic with swing open lid that keeps waste out of sight. Lift off lid for easy emptying. Colour coded for segregation of waste. Available in Blue, Green, Graphite, Red, White, Yellow.

Blue  
Code **M41.H0550-BL**

Green  
Code **M41.H0550-GN**

Granite  
Code **M41.H0550-GR**

Red  
Code **M41.H0550-RD**

White  
Code **M41.H0550-WH**

Yellow  
Code **M41.H0550-YW**



08

**Wheelie Bin 120L**

This 120 litre wheelie bin is ideal for home, offices, schools, hospitals and other commercial companies. The bins offer a 120 litre capacity and feature wheels for manoeuvrability. The bins are ideal for general rubbish or recycling and is lightweight, resistant to UV, frost and chemical exposure. Lightweight yet robust, and manufactured in the UK. Materials: High density polythene. Dimensions: H95 x W47 x D55cm. Weight: 7.5kg. Available in Blue, Green, Dark Grey, Black, Red, Yellow.

- Blue  
**Code M41.H0560-BL**
- Green  
**Code M41.H0560-GN**
- Dark Grey  
**Code M41.H0560-GY**
- Black  
**Code M41.H0560-BK**
- Red  
**Code M41.H0560-RD**
- Yellow  
**Code M41.H0560-YW**



09

**Wheelie Bin 240L**

This 240 litre wheelie bin is ideal for home, offices, schools, hospitals and other commercial companies. The bins offer a 240 litre capacity and feature wheels for manoeuvrability. The bins are ideal for general rubbish or recycling and is lightweight, resistant to UV, frost and chemical exposure. Lightweight yet robust, and manufactured in the UK. Materials: High density polythene. Dimensions: H99 x W58.5 x D73cm. Weight: 10kg. Available in Blue, Green, Dark Grey, Black, Red, Yellow.

- Blue  
**Code M41.H0561-BL**
- Green  
**Code M41.H0561-GN**
- Dark Grey  
**Code M41.H0561-BKGY**
- Red  
**Code M41.H0561-RD**
- Yellow  
**Code M41.H0561-YW**



10

**Slim Jim Recycling Stations**

An adaptable recycling solution offers a front-of-house look with smart functionality.



Snap-in connector



Hinged lid inserts



Vented channels



Bag cinches

2 Stream - Landfill/Paper  
**Code M41.2057605**

3 Stream - Landfill/Paper/Mixed  
**Code M41.2057606**

4 Stream - Landfill/Paper/Plastic/Organic  
**Code M41.2057608**



01

**Litter Picker Aluminium Extrasure 70cm**

Extra Sure Mechanical Litter Grippers - One hand operation for picking up litter, cans, bottles, waste paper, cartons and hazardous needles, sharps and glass. Aluminium shaft, impact-resistant plastic grip-head and handle.

Code M41.4470



02

**Litter Grabber 85cm**

The Litterpicker Pro has evolved over the years to become what it is today - effective pick-up, easy to use whatever the weather or environment, and cost effective for any budget. The 85cm (33") length is designed with the optimum distance in mind for an adult to pick up litter off the floor, preventing any over-stretching or bending. It has a comfortable handle to support the user no matter how long they are litterpicking for.

Code M41.H0600



03

**Litter Picker Budget 80cm, Trigger Claw, Plastic handle.**

Budget Litter Picker - Litter picker with large claw. Length 800mm. Effectively picks up litter and small debris.

Code M41.SP29276



04

**Litter Bag Holder**

BAG HOLDER B05DL110, lift-in type, for fast loading by Litter Plier eliminating the familiar problem of trying to hold open and load a sack. The inset hand hold of the frame provides a comfortable grip even when carrying a fully loaded sack. The bag is firmly trapped onto the frame by a flexible tubular ring. The frame is formed in rigid PVC, the bag retainer tube is thermoplastic rubber. Suitable for bags/sacks with a neck width of 600 mm+, sack change can be effected with ease in less than 30 seconds. To facilitate litter segregation for re-cycling a second smaller bag can be fitted inside the first and stretched across the centre of the opening. As standard: frame colour is black with red bag-retainer-tube or white with a green tube. Weight 300 grammes.

Code M41.SP12098



05

### Compact Cleaning Trolley Plus, 60 cm, Grey

Use the Compact Cleaning Trolley Plus 60 for pre-prepared mopping, damp wiping, storage, and waste collection. A compact size makes it ideal for use in busy wards and easy to store in small spaces. Customise with additional accessories, such as a mop release to eliminate handling of dirty mops.

Code M54.580311



06

### Jolly Trolley

A compact cart made from hardwearing plastic, designed for use even in confined areas. It has three levels of shelving for storage and transport of cleaning items, and a built-in hanger for waste bags. Comes complete with a 60 litre vinyl bag.

Code M47.271





# WORKING TOGETHER; CREATING EFFICIENT SOLUTIONS

We continuously work to give you high quality products, easy to use and long lasting, so that you can save on costs and service times. Our R&D department is always busy designing innovative systems to ensure more efficient, hygienic and ecosustainable cleaning processes for all operators!



## You know you're working with a TTS product when..



it encourages a high standard of hygiene



it reduces times and therefore costs of operations



it is ergonomic and protects operator's health



it is easy to use, modular and customizable



it is unique in design and details



it reduces waste and environmental impact

## Green is better!



Wide range of PSV Plastic Second Life products



Dosely, Hermetic and bio systems for water savings



Textile production powered by solar energy



it is easy to use, modular and customizable



Environmental Product Declaration EPD



IN PARTNERSHIP  
WITH TOWER



TTS are proud to partner with Tower. Together our combined expertise deliver you the latest innovations and ensure the correct processes for cleaning and sanitising any environment.



Surveys on site to identify specific needs



Wide range of products to find custom-made solutions



Short Lead Times

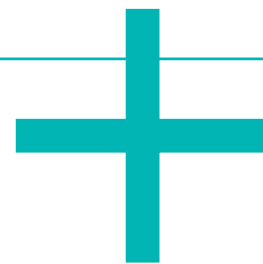


After-sale support  
Onsite Training

No-one goes into a hardware store to buy a hole in a wall. In fact, hardware stores don't sell holes in walls; they sell tools ranging from sledgehammers to laser-guided drills.

TTS, in partnership with Tower, have the expertise to provide consultation to identify the best solution based on your precise needs. These needs may include, but are not limited to, improved hygiene standards, increased efficiencies, reduced operator fatigue, achieving environmental targets by reducing water/chemical consumption, lowering laundry costs all whilst using CO2 neutral products.

We work with our customers to ensure that our equipment is fully utilised and that the ergonomic benefits are delivered through on-site training and continued after-sales support.



ADD TTS  
TO YOUR  
BUCKET LIST!



IN PARTNERSHIP  
WITH TOWER

## MAGIC LINE

### CENTRAL BASKET SOLUTIONS



- Completely made in polypropylene
- Strong and robust design
- Easy to clean



### SIDE BASKETS SOLUTIONS



- Light and non-slip
- Completely non-porous
- Spill-resistant with rounded corners and smooth surface for easy, suitable cleaning
- Easy to hang directly on the elastic panels for the assigned trolley
- With equipment 1.5 times as much space, the trolley becomes even robustness and functional



## 100% PURE SPACE

### PLASTIC SHELVES SOLUTIONS



- Smooth surface for easy inside cleaning
- Fits into side rails and protrudes 100 mm from the front vertical space for your stuff



### PLASTIC DRAWERS SOLUTIONS



- Large drawers with an extra deep
- Capacity: 10, 20 and 40 l
- No 180° on the rear of drawers
- Strong
- Hygienic: easy to apply, remove and clean
- Smooth and rounded corners, easy to clean



## MAGIC LINE

### HANDLES

SCOUT: the universal handle holder



scout

- A safe and working equipment
- Ergonomic security
- A smart, growing system with more
- Easy to apply

### CUSTOMIZING TROLLEYS

LET YOUR IMAGINATION RUN WILD!



Personalized you can customize your trolley with great help of any other picture you like.

#### CUSTOMIZATION

This solution includes printing an adhesive film afterwards applied to fronts and walls of the trolley ideal for limited quantities.

#### FUNCTION PRINTING

This solution includes printing directly on doors and walls of the trolley during production, ideal for large quantities.

## SMART DESIGN

### MULTIPURPOSE CLOTHS SOLUTIONS



- Central basket can be used to store multipurpose cloths, bottles and small tools
- Save all your cleaning solutions and products in built-in drawers, allow you to find the right space and meet every need

### I-PAD SOLUTIONS



- A | MAGIC 1000
  - Fast and ergonomic way for magic 1000 trolley
  - Perfect for holding various items such as labels, sheets and brochures
- B | TABLET HOLDER 1000-01
  - Tablet holder with removable top for Magic 1000 trolley
  - Adjustable holding up to any tablet from 7.5 to 10.1 inches in a few seconds





THE SPECIALIST OF CLEANING  
MADE IN ITALY



### DOSELY Dose the right thing



Dosely is the first dosing system to soak mops on demand, fully automated and safe, without nebulising cleaning solution. Dosely is designed to grant a high ergonomics level: it is easy to use as extremely intuitive and user-friendly as it does not involve any physical effort, on the contrary, no more transportation of heavy buckets filled with pre-soaked mops will be needed. Dosely can be applied to all Magic Line trolleys, which is also the first Carbon Neutral trolleys line thanks to TTS off setting program.

### NICKITA The compact cleaners trolley

Nickita is the new double-bucket trolley making history, as the Nick trolley did in 1996, as it was the first plastic trolley with a patent on the frame made with from a single mould.

Nickita is characterised by compactness, elegant design and flexibility. Nickita is also certified PSV - Plastic Second Life since it is made with high percentages of polypropylene deriving from recycling, making it resistant, long lasting and completely recyclable at end-of-life.

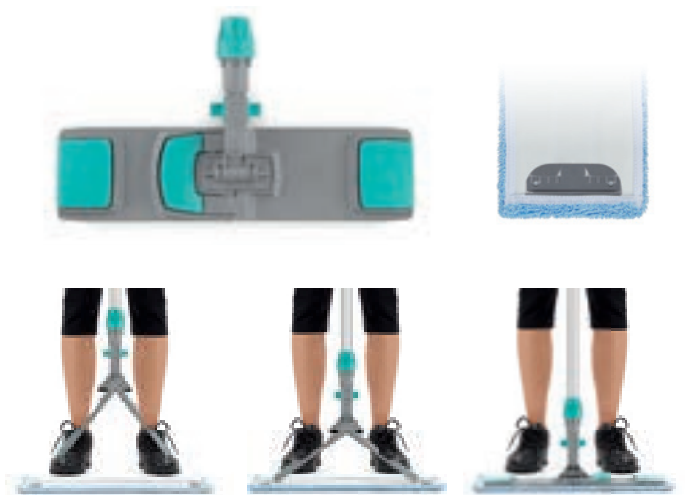


### INFINITY Infinitely ergonomic



Infinity is the unique system made by TTS to facilitate the “∞” movement and therefore the professional floor cleaning operations, granting high performance and protecting operator’s health at the same time. The new system consists of telescopic handle with twisting grip and frame with joint, designed to guarantee maximum ergonomics. The innovative handle ensures the maintenance of a correct posture and considerably reduces wrist flexion and extension movements in comparison with standard handle, preventing the onset of musculoskeletal disorders.

### UNI SYSTEM 1 tool for 3 systems



Uni System, the first universal frame for washing and disinfection that allows you to reduce the necessary equipment, avoiding compatibility problems and the difficult laundry management of different mops: it is compatible with pre-soaking Hermetic bucket and Dosely soaking station and it can be used with TTS roll, jaw or flat wringer according to specific needs. The easy opening system of the frame allows a quick set-up of the tool while the flat mop can be quickly attached to the frame thanks to the easy fixing system and it remains firmly attached during use, thanks to the anti-slip device.

01

**Budget Window Wiper Blade with handle**

Hi Rise - Window Squeegee - 10". Comes complete, with blue ABS plastic ergonomic handle, anodised aluminium channel and quality rubber blade.

Code **M49.H0674**



03

**Window Squeegee**

Polished Stainless Steel Squeegee. Made from stainless steel these squeegees are rust-free and fitted with the finest quality moulded squeegee rubber, for a streak-free finish. Silver/Black.

12 Inch

Code **M49.H0671**

14 Inch

Code **M49.H0672**

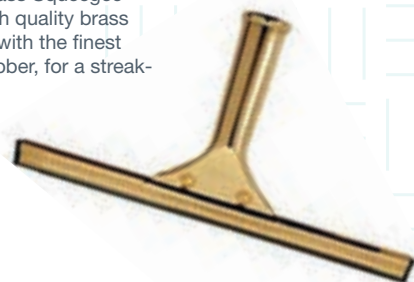


02

**Brass Squeegee**

GOLDENBRAND Brass Squeegee - 12". Traditional high quality brass window squeegees with the finest quality squeegee rubber, for a streak-free finish.

Code **M49.H0673**



04

**Replacement Rubber Blade 36"**

The professional's No.1 choice! The edge of the rubber is the key to success. Genuine Pulex rubber is used for its grip and adherence for a streak-free finish. Laser tested throughout manufacture. Cut-to-length finest quality hard or soft compound moulded rubber replacement squeegee blade, ready to use.

Code **M49.UB000**



05

**Applicator Holder**

StripWasher® UniTec™ T-Bar Lightweight plastic washer handle. Water wells for increased water retention. Lightweight monolithic plastic.

10 Inch

Code **M49.H0676-10**

14 Inch

Code **M49.H0676-14**

**Applicator Sleeves**

StripWasher® Original Sleeve. Blended fabric standard sleeve with velcro fastener. Machine washable up to 500 times.

10 Inch

Code **M49.H0677-10**

14 Inch

Code **M49.H0677-14**

**Monsoon Strip**

StripWasher® Monsoon Sleeve. Blended fabric sleeve with extra long fibres, scrub pad and velcro fastener. High water retention. Machine washable up to 500 times.

10 Inch

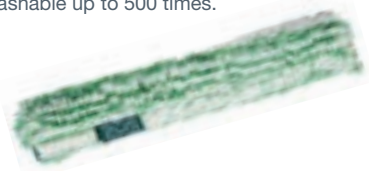
Code **M49.M5250**

14 Inch

Code **M49.M5350**

18 Inch

Code **M49.M5450**



06

**Galvanised Squeegee**

Lightweight Metal Squeegee - This product is ideal for cleaning most floorings and non-food contact.

18 Inch

Code **M53.H0806**

22 Inch

Code **M53.H0807**

30 Inch

Code **M53.H0808**



07

**Wooden Squeegee Complete 24"**

This rubber squeegee broom is ideal for cleaning around the home and commercial use. This broom is made from durable quality materials and suitable for use on floor and tile areas.

Code **M53.H0805**



08

**Aluminium Handle**

Threaded Anodised Aluminium 1360mm Handle - Anodised Aluminium Handle with a coloured hand grip. 1360 mmL x 25 mmH. Weight: 0.37 kg. Available in Black, Blue, Green, Orange, Red, Violet, White, Yellow.

Black

**Code M53.H0809-BK**

Blue

**Code M53.H0809-BL**

Green

**Code M53.H0809-GN**

Orange

**Code M53.H0809-OR**

Red

**Code M53.H0809-RD**

Violet

**Code M53.H0809-VI**

White

**Code M53.H0809-WH**

Yellow

**Code M53.H0809-YW**

09

**OptiLoc 3 Sections Telescopic handle**

OptiLoc™ 3 Sections Telescopic pole with ErgoTec® Locking Cone. Made from durable yet lightweight aluminium with non-slip twist locks and ergonomic handle for secure grip. The Pole features the ErgoTec® Locking Cone for secure attachment of Unger tools - just push the release button to remove the tools. Compatible with any tools featuring ACME thread fitting. Can be extended and fixed at any stage using twist locks.

1.85m

**Code M49.ED180**

3.75m

**Code M49.ED370**

4.5m

**Code M49.ED450**

6m

**Code M49.ED600**

7.5m

**Code M49.ED750**

9m

**Code M49.ED900**

10

**OptiLoc 2 Sections Telescopic handle**

OptiLoc™ 2 Sections Telescopic pole with ErgoTec® Locking Cone. Made from durable yet lightweight aluminium with non-slip twist locks and ergonomic handle for secure grip. The Pole features the ErgoTec® Locking Cone for secure attachment of Unger tools - just push the release button to remove the tools. Compatible with any tools featuring ACME thread fitting. Can be extended and fixed at any stage using twist locks.

1.25m

**Code M49.EZ120**

2.5m

**Code M49.H0680**

3m

**Code M49.EZ300**

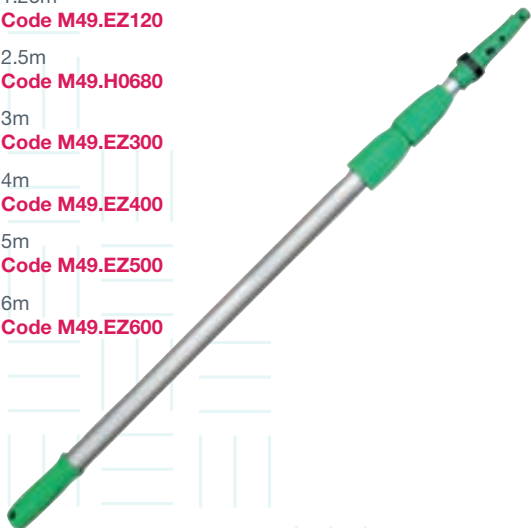
4m

**Code M49.EZ400**

5m

**Code M49.EZ500**

6m

**Code M49.EZ600**

11

**Telescopic Handle 1.3m**

Aluminium 1300-4000mm Telescopic Handle. 1300mm L x 21 mm W x 38 mm H. Weight 0.76 kg.

**Code M49.H0679**

01

**Trigger Spray Head and Bottle**

Trigger spray head - Heavy duty blue / white, short cap with ergonomic pistol grip.

Trigger spray bottle - 1 litre natural swirl neck (no dilution marks).

Trigger Spray Head  
Code **M56.SP2501**

Trigger Spray Head Bottle  
Code **M56.DL2102**



02

**Trigger Spray Head and bottle**

Ergo-Spray Trigger Heads - Adjust the jet stream to suit your application. Simply twist nozzle to adjust.

600ml bottle. R3 neck - 600ml capacity custom designed HD polyethylene spray bottles for a wide range of dispensing chemical solutions with calibration markings for easy chemical dilution. Available in various colours

Blue Trigger Spray Head  
Code **M80.H0701BL**

Black  
Code **M80.H0702BK**

Green Trigger Spray Head  
Code **M80.H0701GN**

Blue  
Code **M80.H0702BL**

Red Trigger Spray Head  
Code **M80.H0701RD**

Clear  
Code **M80.H0702CL**

White Trigger Spray Head  
Code **M80.H0701WH**

Green  
Code **M80.H0702GN**

Yellow Trigger Spray Head  
Code **M45.H0701YL**

Red  
Code **M80.H0702RD**



White  
Code **M80.H0702-WH**

Yellow  
Code **M80.H0702YW**



03

**Trigger Spray Complete 600ml**

750ml bottle. R3 neck. 750ml capacity custom designed HD polyethylene spray bottles for a wide range of dispensing chemical solutions. With Ergo-Spray Trigger Heads and calibration markings for easy chemical dilution.

c/w 'Tower Supplies' logo.  
Code **M80.H0700**

Plain  
Code **M80.H0700CLG**



04

**McProper Plus sprayer**

McProper Plus sprayer - Versatile sprayer for use in any position. 500 ml fill with 100 ml measure scale. Works in sideways or "upside-down" mode.

Code **M56.BM4305**



05

**Pump sprayer 1.5L**

This economical, hand-held 1.5 litre pump-up sprayer has NBR seals. The natural polyethylene bottle has calibration markings down the side for accurate chemical dilution and can be used with general cleaning products but not acid or alkaline products. Colour: Green and white. Weight: 0.45kg. Bottle volume: 0.009m3.

Code **M80.H0703**



06

**Mobile Barricade System**

For indoor use 4 metres long with 16 articulating panels Two non-marking wheels for quick deployment Four locking straps to secure barrier in closed position Lightweight - 15 kg ANSI compliant colour and graphics Comes ready assembled

- Easy to use, easy to see, easy to move and store a fantastic method of dividing an area and protecting the public from installations, cleaning and danger.
- For Indoor use
- Opens to 4mtrs and closed at 60 x 35 x 100cm
- 16 folding panels
- Non marking wheels to ease movement
- Lightweight 15kg and comes ready to go
- Yellow

Code K08.FG951100



07

**Minder Safety Barrier system**

Minder - The 'Little Yellow Man' is a bright and friendly way to inform your customers of any cleaning or maintenance work. For use in all public places; Supermarkets & Shopping Centres, Fast Food Restaurants, Hospitals, Schools, Airports etc. Each Minder is supplied with a stand - so he can stand alone and with a pack of 6 messages. These are: Caution - Out of Service, Caution - Wet Floor, Temporarily Closed, Danger - Keep Out, Cleaning in Progress, Caution - Work Area.

Code K08.BS028



08

**"A" Frame Sign**

600mm x 300mm A Frame sign.

Floor Cleaning

Code M48.H0652-CLEAN

Toilets Closed for Cleaning

Code M48.H0652-CLOSED

Danger Slippery Surface

Code M48.H0652-SLIP

Caution Trip Hazard

Code M48.H0652-TRIP

Caution Wet Floor

Code M48.H0652-WET



09

**Cone 20"/50cm 'Caution Slippery Surface'**

50cm/20" PVC 'Caution Slippery Surface' Cone to mark hazardous areas.

Code M48.H0651



01

**Sponge Mop Frame Brute 1270mm Blue**

1270mm Sponge Mop Frame. Metal frame with white plastic fittings and coloured caps. Ideal for: Wet mopping tiled, non-food contact areas. Dimensions: 315 mm L x 70 mm W x 1359 mm H. Weight: 1.19kg.

Code M46.H0626

Refill

Code M46.H0627



02

**Addis Deluxe Super Dry Squeeze Mop**

Deluxe Super Dry Squeeze Mop. With integrated lever for wringing excess water. Plastic components with powder coated tubular metal handle and hanging loop. Sponge head: 200 x 130mm. Overall length: 1125mm.

Code M46.H0620

**Addis Deluxe hinge mop refill yellow**

Deluxe hinge mop refill yellow. Easy to fit. Highly absorbant hydrophillic sponge.

Code M46.H0621



03

**Sponge Mop Frame 9" Heavy Duty**

Sponge Mop frame 240mm (9.5"). Weight: 1.00kg.

Code M46.H0622

**Sponge Mop Refill**

Cellulose Sponge mop refill. Cellulose sponges can be autoclaved at 100°C.

9.5 Inch

Code M46.H0623

14 Inch

Code M46.H0625



04

**Dust Beater Complete 40cm**

Dust Beaters Colour Coded - Lightweight, efficient and easy to use. Dust control sweepers with 'break frame' colour coded acrylic sweeper heads and aluminium handle. 40cm, 16" Mop complete with frame and handle. Available in Blue, Green, Red, Yellow.

- Blue  
**Code M50.H0690-40**
- Green  
**Code M50.H0690-40GN**
- Red  
**Code M50.H0690-40RD**
- Yellow  
**Code M50.H0690-40YW**



05

**Dust Beater Complete 80cm**

Dust Beaters Colour Coded - Lightweight, efficient and easy to use. Dust control sweepers with 'break frame' colour coded acrylic sweeper heads and aluminium handle. 80cm, 32" Mop complete with frame and handle.

- Blue  
**Code M50.H0690-80**
- Replacement Head blue  
**Code M50.H0691-80BL**



06

**Dust Beater Complete 60cm**

Dust Beaters Colour Coded - Lightweight, efficient and easy to use. Dust control sweepers with 'break frame' colour coded acrylic sweeper heads and aluminium handle. 60cm, 24" Mop complete with frame and handle. Available in Blue, Green, Red, Yellow.

- |                                      |  |
|--------------------------------------|--|
| Blue<br><b>Code M50.H0690</b>        | Replacement Blue<br><b>Code M50.H0691-60BL</b>   |
| Green<br><b>Code M50.H0690-60GN</b>  | Replacement White<br><b>Code M50.H0691-60WH</b>  |
| Red<br><b>Code M50.H0690-60RD</b>    | Replacement Yellow<br><b>Code M50.H0691-60YW</b> |
| Yellow<br><b>Code M50.H0690-60YL</b> |  |



07

**V-Sweeper 1.6m Blue**

Scissor Mop Frame. 1570mmL x 1000mmW. Superior quality 'V' sweeper with 1570mm powder coated handles and 1000mm frames for cleaning large corridors and open areas. Sweeper heads sold separately. Weight: 5.51kg.

- Code M50.H0692**
- Replacement heads  
**Code M50.H0693**



01

**PY Socket mop head**

PY Socket mop head with metal ferrule fits wooden handle.

12oz

Code **M45.H0610**

16oz

Code **M45.H0611**



02

**Twine Exel Socket Mop Head**

Made from thinner twine yarn which is more resistant to abrasion and suitable for more profiled or rougher flooring. Twine yarn doesn't lint as much as PY. 250g.

Blue

Code **M45.PX250-BL**

Green

Code **M45.PX250-GN**

Yellow

Code **M45.PX250-Y**



Push

03

**Mophead Kentucky Multi**

Multi Yarn Kentucky Mop - Multi Yarn: A combination of PY and Twine yarn, absorbent and resistant to abrasion.

12oz/340g

Code **M45.H0613**

16oz/450g

Code **M45.H0614**

20oz/567g

Code **M45.H0615**

24oz/680g

Code **M45.H0616**



04

**PY Exel Socket Mop Head (x 10)**

A traditional yarn mop with our Exel push fitting, designed to avoid the mop slipping on the handle whilst wringing. Absorbent PY yarn is suitable for smoother floor surfaces like laminate or lino flooring. 200g.

Blue

Code **M45.SP28087-BL**

Green

Code **M45.SP28087-GN**

Red

Code **M45.SP28087-RD**

Yellow

Code **M45.SP28087-YL**



Push

05

**Socket Mop Head**

A lightweight, super-absorbent mop made from non-woven fabric strips. A great value, fast drying alternative to cotton mops, ideal for smaller areas, and available in white and red.

White (x10)

Code **M45.SP27203**

Red (x60)

Code **M45.SP27203-RD**



Screw

06

**Big White Exel Mop Head**

A lightweight, super-absorbent mop made from non-woven fabric strips, with extra-secure Exel push-fit fitting to avoid mop slipping in handle when wringing. A great value, fast drying alternative to cotton mops, ideal for smaller areas. 117g.

Red (x10)

Code **M45.PSRD**

Red (x60)

Code **M45.PSRD.1**



Push

07

**Twine Exel Socket Mop Head**

The stayflat band holds the circular shape enabling the mop to cover a larger floor area. Made from a unique blend of polyester and cotton yarns for improved strength and absorbency. 200g.

Blue

Code **M45.SP21576-BL**

Green

Code **M45.SP21576-GN**

Yellow

Code **M45.SP21576-YW**

Red

Code **M45.SP21576-RD**

White

Code **M45.SP21576-WH**



Screw

08

**Kentucky Handle Aluminium**

Powder Coated Aluminium Handle with Metal Kentucky Fitting. Colour coded grip available in Blue, Green, Red, Yellow.

Blue

Code **M45.H0617-BL**

Green

Code **M45.H0617-GN**

Red

Code **M45.H0617-RD**

Yellow

Code **M45.H0617-YW**



09

**Exel Handle Aluminium - Push Fit**

A lightweight aluminium handle with push fitting which can be used with all Exel sockets.

- Green  
Code M45.SP10303-G
- Red  
Code M45.SP10303-R
- Yellow  
Code M45.SP10303-Y
- Blue  
Code M45.SP10303-B



11

**Abbey Handle Aluminium - T1 Screw Thread**

A versatile aluminium handle with T1 screw thread, used with mops, mop holders, washable brushware and squeegees.

- Green  
Code M45.YYA-48GN
- Red  
Code M45.YYA-48RD
- Yellow  
Code M45.YYA-48YW
- Blue  
Code M45.YYA-48BL

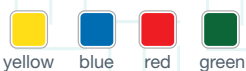


13

**Mop Bucket & Wringer Complete**

Hygiene Mop Bucket & Wringer - Contract mop bucket and wringer. Slide lip for easy pouring.

- 12L Blue  
Code M44.H0590-BL12L
- 12L Green  
Code M44.H0590-GN12L
- 12L Red  
Code M44.H0590-RD12L
- 12L Yellow  
Code M44.H0590-YW12L
- 15L Blue  
Code M44.H0590-BL15L
- 15L Green  
Code M44.H0590-GN15L
- 15L Red  
Code M44.H0590-RD15L
- 15L Yellow  
Code M44.H0590-YW15L



10

**Mop Bucket Wheeled 23L**

Designed for ease of use, durability and mobility. Strong and sturdy. 75mm (3") castors. Bucket only.

- Blue  
Code M44.H0595-BL
- Green  
Code M44.H0595-GN
- Red  
Code M44.H0595-RD
- Yellow  
Code M44.H0595-YW



12

**Mop Wringer Heavy Duty 12-20oz**

Ambassador Heavy Duty Steel Mop Wringer. Gear operated, zinc coated with/without colour sided panels. Nylon pressure bars. Use with mops 350-560gm (12-20oz).

- Plain Steel  
Code M44.H0596
- Blue  
Code M44.H0596-BL
- Green  
Code M44.H0596-GN
- Red  
Code M44.H0596-RD
- Yellow  
Code M44.H0596-YW



14

**Combination Wringer/Bucket 23L**

Smoothline Combination Wringer/Bucket 23L - The original and still the best British made bucket. Superb mopping systems for the professional cleaner. Designed for ease of use, durability and mobility. Strong and sturdy. Wringers are easily applied and quick to lift off for emptying, ideal for Kentucky mops up to 20oz (560grms) Combo polypropylene bucket with plastic wringer, dirt retaining sump and two steel handles. Smooth running easy glide 75mm (3") castors.

- Blue  
Code M44.H0598-BL
- Green  
Code M44.H0598-GN
- Red  
Code M44.H0598-RD
- Yellow  
Code M44.H0598-YW



01

**Vileda SuperMop Bucket 10L**

SuperMop Ag Bucket & Wringer - Bucket & wringer: lightweight bucket and wringer are easy to carry and easy to store. With integrated handle holder.

Blue

Code **M44.H0602-BL**

Green

Code **M44.H0602-GN**

Red

Code **M44.H0602-RD**

Yellow

Code **M44.H0602-YW**



02

**Vileda SuperMop Handle Colour-Coded Ends**

Vileda Professional's aluminium handles have been developed with top ergonomics, performance and easy handling in mind. The light weight fixed handle has a long grip (18,5 cm), ergonomically shaped with a rounded end and a comfortable and good grip. Monoclick connector for usage with vertical mops such as Supermop. The 4 colour system offers simple identification of different application areas. Interchangeable choice of 4 colour clips.

Code **M44.H0601**



03

**Vileda Mop Head SuperMop Ag**

The new Vileda Professional SuperMop Ag is a hygienic solution for fast, effective and intensive cleaning of small and medium sized floor areas. The unique construction that hinders the growth and multiplication of bacteria, now has silver ions added that inhibit 99.99% of bacteria growth within the mop. All packed in a new, modern and fresh looking design. Size: 33 x 10cm.

Blue

Code **M44.H0600-BL**

Green

Code **M44.H0600-GN**

Red

Code **M44.H0600-RD**

Yellow

Code **M44.H0600-YW**



04

### UltraSpeed Mini Mopping Kit

UltraSpeed Mini Starter Kit - Small and compact system with 10L bucket and bionic press wringer. Ideally used for small area cleaning tasks (10 - 30 m<sup>2</sup>), like offices, cafes, small retailers and restaurants, etc. Bionic press wringer available in four colours for colour-coded usage. Blue, Green, Red, Yellow.

Code M44.H0770



UltraSpeed Mini Telescopic Handle. 81-140cm  
Code M44.H0771



Replacement UltraSpeed Mini Microlite Mop Pad  
Code M44.H0772



Replacement UltraSpeed Mini Safe Mop Pad  
Code M44.H0773



UltraSpeed Mini Mop Frame  
Code M44.H0774

05

### UltraSpeed 25L Starter Kit

UltraSpeed 25L Kit - Strong, light 25L bucket with highly efficient gearless lever press for excellent press results. Rectangular design for more stability. Handle holder on press for easy storage of handle. Coloured clips to colour code the system RGBY. 25L Starter Kit consists of a 25L bucket, a chassis, a press, a frame and one UltraSpeed Microlite mop. 25L Kit consists of a bucket 25L, a chassis and a press.

Code M44.H0690



UltraSpeed Microlite Mop Pad (Standard Head) (x1)  
Code M44.H0693



UltraSpeed Safe Mop Pad (x1)  
Code M44.H0694



UltraSpeed Handle (x1)  
Code M44.H0691



UltraSpeed Telescopic Handle (x1)  
Code M44.H0692



01

**Hygiene Bucket 10L**

Lucy 2 Gallon Bucket - Colour coded for hygienic cleaning and to help reduce cross contamination. 10 litre capacity and made from durable polypropylene with a strong pick up and go carry handle. Available in Blue, Green, Graphite, Red, White, Yellow.

Blue

**Code M42.H0570-BL**

Green

**Code M42.H0570-GN**

Graphite

**Code M42.H0570-GR**

Red

**Code M42.H0570-RD**

White

**Code M42.H0570-WH**

Yellow

**Code M42.H0570-YW**

02

**Bucket Ultra Hygiene 15L**

Ultra Bucket - Colour coded, practical and durable polypropylene buckets with steel handle and plastic hand hold.

Green

**Code M42.H0573-BL****Code M42.H0573-GN**

Orange

**Code M42.H0573-OR**

Red

**Code M42.H0573-RD**

Yellow

**Code M42.H0573-YW**

03

**Stainless Steel Bucket 12L**

This great value stainless steel bucket is perfect for all heavy duty cleaning purposes. The stainless steel is easy to clean and disinfect after using harsh chemicals and has a polished finish. Capacity: 12L. Dimensions: 300(H) x 310(Ø)mm.

**Code M42.H0582**

04

**Black Builders Bucket 3 gallon**

Black Builders Bucket

**Code M42.H0571**

05

**Muck Bucket Heavy Duty 70L**

Muck Bucket - This 'original' muck bucket is ideal for storage and transporting waste and rubbish. Multi-purpose container with heavy duty rope handles. Extremely durable long lasting weather-resistant polypropylene. Washable and easy clean after use. Dimensions: H: 43cm Dia: 56cm.

**Code M42.H0578**

06

**Moulders Bucket**

Plastic white moulders bucket tamper evident with plastic handle.

1L

**Code M42.H0574**

2.5L

**Code M42.H0575**

5L

**Code M42.H0576**

10L

**Code M42.H0577**

07

**Window Cleaners Bucket 25L**

25L Polypropylene 460m Bucket - Blue. This product is ideal for moving ingredients and cleaning chemicals.

**Code M42.H0579-BL**

08

**Vileda Micro Clean Cloths 380mm x 400mm (x5)**

QuickStar micro is a unique, durable microfibre cloth designed for timesaving, streak-free cleaning performance and daily washes. The ideal cloth for the pre-preparation in buckets/boxes with cleaning solution. Use it damp or dry.

- Blue **Code M36.H0457**
- Green **Code M36.H0457-GN**
- Red **Code M36.H0457-RD**
- Yellow **Code M36.H0457-YW**



09

**Spontex Decorators Sponge**

Spontex Cellulose Decorators Sponge - Ideal for washing down walls, decorating and household use. Long lasting and very absorbent.

**Code M38.H0470-NA**



10

**Chamois Leather**

Genuine Chamois Leather - Top of the range oil dressed finishing cloths provides a smear-free finish.

- Small - 45x40cm **Code M49.H0684-S**
- Large - 60x60cm **Code M49.H0684**



11

**Floorcloth (x10)**

Abrasive qualities help to remove stubborn stains.

Medium 19" x 16" **Code M35.H0442**

Heavy Duty 19" x 18" **Code M35.H0443**



12

**Dishcloth folded (x10)**

Stockinette Dishcloth - Traditional everyday cloths from traditional dishcloths to industrial and more modern antibacterial cleaning cloths. Still the best for most wiping tasks. Soft and absorbent. Suitable for wet and dry applications. 12" x 11".

**Code M35.H0440**



13

**Stockinette Roll 800g**

Stockinette rolls are a cost-effective way to clean and wipe. The rolls can be cut to length, meaning you only use the amount of cloth you require. The cloths can be used for a variety of cleaning tasks and are ideal for use by engineers for wiping up grease and oil.

**Code M35.H0445**



01

**Scotch-Brite™ General Purpose Scouring Pads (x10)**

Scouring pad for everyday cleaning of most cooking utensils and equipment. Scours 2 to 3 times faster and lasts 2 to 3 times longer than comparable pads. Non-rusting and resilient, this synthetic pad is an ideal replacement for steel wool or stainless steel scrubbers.

Code M34.H0424

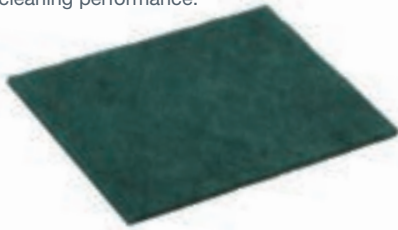


03

**Scouring Pads Vileda Green (x10)**

Ideal for tough jobs in the kitchen. In a Vileda scourer, every fibre is coated with grit and resin ensuring superb cleaning action throughout the lifetime of the scourer. The strong resin-to-fibre bond ensures even wear of fibres and abrasives, resulting in consistently excellent cleaning performance.

Code M34.H0421



05

**Miracleclean Blocks (12x12)**

Erase deep-seated stains without chemicals or detergents. Non-abrasive melamine foam – dampen to use

Code M34.102750



07

**Sponge Scourer**

Industrial scourer sponges are perfect for busy catering kitchens. The scourer part of the washing up sponge is constructed with non-scratch fibre, scourer part available in white or green.

White (x60)

Code M34.SP24130

Green (x10)

Code M34.SP24130-GN

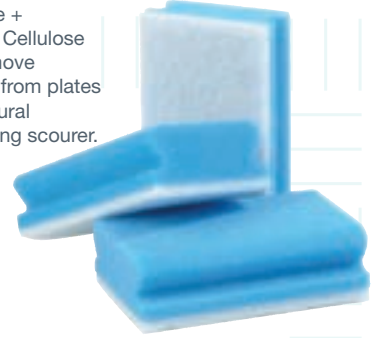


02

**Sponge Scourer Non Scratch Blue/White (x80)**

Pure natural cellulose + extra strong scourer. Cellulose sponge scourers remove deposits and grease from plates and dishes. Pure natural cellulose + extra strong scourer. Wipe and clean.

Code M34.SP29079



04

**Sponge Scourer Green (x10)**

High performance, high quality abrasive scourer with easy grip foam backing Ideal for general washing-up and mark removal. Foam backing protects fingers and keeps the scourer flat for maximum contact with the cleaning surface.

Size: 15 x 7 cm.

Code M34.H0434

Size: 14 x7 cm.

Code M34.SP23984



06

**Standard Green Scouring Pads (x10)**

A standard weight scouring pad designed to easily remove tougher dirt. Suitable for use in catering and general cleaning.

Code M34.H0425-GN

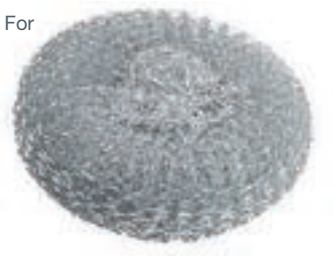


08

**Galvanised Scourers (x25)**

Galvanised Scourers. Brilliant For Removing Stains From Grills, Barbecues & Stainless Steel Pots & Pans.

Code M34.H0440



# Floor Pads

## Black: Stripping & Cleaning

For wet scrubbing strong layers of emulsion floor polishes. Removes the old finish and eliminates concrete burns. For machines operating up to 600rpm.



## Blue: Light Cleaning

Light cleaning and spray burnishing. For machines operating up to 600rpm.



## Green: Intermediate Cleaning

For the removal of surface layers of wax and to prepare the floor for the next process. Use wet. For machines operating up to 600rpm.



## Red: Polishing Spray

For frequent use on relatively clean floors and spray burnishing. It also cleans and polishes dry. For machines operating up to 600rpm.



## Standard Speed Floor Pads

For machines operating up to 600rpm. 85mm push out centre hole prevents the floor pad from overheating. Pads hug uneven floors and can be used on both sides with no loss of efficiency. To extend the life of the pads, brush the pad surface while rinsing with clean water by using the centre push-out piece, and hang to dry.

## Brown: Scrubbing

Hard aggressive scrubbing wet or dry, with strippers. Prepares the floor for new emulsion floor polishes. For machines operating up to 600rpm.



## Tan: Polishing

For light cleaning and maintaining all types of floors. Use dry. For machines operating up to 600rpm.



## White: Finishing & Polishing

Suitable for finishing and polishing floors. Use dry. For machines operating up to 600rpm.



Floor Pad Selection Matrix

Pad Colour	Size					
	11"	12"	14"	15"	16"	17"
Green	M33.H0410-GN	M33.H0411-GN	M33.H0416-GN	M33.H0412-GN	M33.H0413-GN	M33.H0414-GN
Red	M33.H0410-RD		M33.H0416-RD	M33.H0412-RD	M33.H0413-RD	M33.H0414-RD
Black				M33.H0412-BK	M33.H0413-BK	M33.H0414-BK
White					M33.H0413-WH	M33.H0414-WH
Blue	M33.H0409-BL			M33.H0412-BL		M33.H0414-BL
Tan				M33.H0412-TA		M33.H0414-TN

01

**Glass Cloth Linen Union**

Cotton Glass Cloth - Cotton alternative. Designed to give glass that professional sparkle. Washable. 50cm x 76cm/20" x 30".

Code **M39.H0482**

02

**Check Pattern Tea Towels**

Rice Weave Tea Towel - In assorted colours. Popular and durable. Washable. 45cm x 70cm/18" x 28".

Code **M39.H0481**

03

**Yellow Dusters (x10)**

Standard Yellow Duster - A cotton rich good all-round performing duster.

Standard 51 x 40cm

Code **M37.H0461-16**

Budget 50 x 33cm

Code **M37.H0460**

04

**Cotton Tea Towels**

White Cotton Tea Towel - Popular and durable. Washable. 45cm x 74cm/19" x 29".

Code **M39.H0480**

05

**Lambswool Flick**

Soft Lambswool 356mm Duster. This product is ideal for removing dust from smooth surfaces. Dimensions: 584mm L x 60mm W x 650mm H. Weight: 0.08kg.

24 Inch

Code **M37.H0464**

48 Inch

Code **M37.H0465**

06

**Microfibre Cloths**

Microfibre is extremely versatile and can be used both wet and dry. Offering a high absorption capacity and speed, microfibre cloths provide an effortless cleaning solution. With no labels, they easily clean glass and stainless steel surfaces, as well as collecting dust, dirt and food. Microfibre cloths are machine washable and re-usable for a longer life-span. The mechanical cleaning action of microfibres easily allows the tiny fibres to trap and hold dust and dirt particles without transferring them to other surfaces. The dirt particles stay locked inside the microfibre cloth until washed in hot water, which loosens the fibre's grip and releases the contents.

Code **M35.SP29055.2-BL** Blue (x10)Code **M35.SP29055.2-GN** Green (x10)Code **M35.SP29055.2-PU** White (x100)Code **M35.SP29055.2-RD** Green (x10)Code **M35.SP29055.2-YW** Yellow (x10)Code **M35.SP29055** Orange (x200)

07

**Multi-Purpose Cloths (x50)**

Flexible and easy to handle. High resistance thanks to a resin bonded technology. Semi-disposable product designed for one day work. Colour coded to indicate recommended area of use.

Blue

Code **M36.SP23182**

Green

Code **M36.SP23182-GN**

Red

Code **M36.SP23182-RD**

Yellow

Code **M36.SP23182-YW**

08

**All Purpose Lightweight Cloth**

Everyday general purpose cleaning cloth, ideal for light duty tasks. The apertured structure of the cloth provides food and dirt pickup as well as good absorbancy. 25cm W x 25cm L. 500 sheets/roll

**Code L17.SP23764-YL** Yellow x 2 rolls

**Code L17.SP23763-YL** Yellow x 6 rolls

**Code L17.SP23763-BL** Blue x 6 rolls

**Code L17.SP23763-RD** Red x 6 rolls

**Code L17.SP23763-GN** Green x 6 rolls



10

**Multi Purpose Wipe**

Heavy Weight Cloths, strong, durable and absorbant to provide effortless cleaning. 1/4 folded, 49cm W x 38cm L. 6 x 25=150 sheets/case, 96 cases/pallet.

**Code L11.NW081-BL** Blue

**Code L11.NW081-GN** Green

**Code L11.NW081-RD** Red

**Code L11.NW081-YW** Yellow



09



**J-Cloth® Plus 100% Compostable & biodegradable**

Chicopee® J-Cloth® Plus 100% Compostable and biodegradable for general purpose cleaning applications. The open-weave structure of the environmentally friendly Chicopee® J-Cloth® Plus Biodegradable inhibits bacterial growth on the cloth as well as providing excellent food, dirt and dust pick-up. Environmentally friendly. 4 colours available - provides a segregated cleaning solution. Compatible with cleaning agents and solvents. Food Contact Clearance (FCC) approved. Compostable and biodegradable in accordance with the DIN EN 13432 200- 12 standard.

**Code L18.BW040-BL** Blue

**Code L18.BW040-RD** Red

**Code L18.BW040-GN** Green

**Code L18.BW040-YL** Yellow



11



**Lavette Super Cloths**

Chicopee® Lavette Super has a unique open structure which effectively picks up dirt and offers high absorption. The fibre and binder composition of Chicopee® Lavette Super creates an antibacterial effect, inhibiting bacterial growth on the cloth. Available in 5 colours, Chicopee® Lavette Super can be used as part of a comprehensive colour-coding system to assist with the prevention of cross-contamination. Food Contact Clearance (FCC) approved, Strong and durable, Machine washable up to 40 times and reusable. 51cm W x 36cm L. 6 x 25 = 150 sheets/case.

**Code L18.CW010-BL** Blue

**Code L18.CW010-RD** Red

**Code L18.CW010-WH** White

**Code L18.CW010-GN** Green

**Code L11.NW081-YW** Yellow



12



**J-Cloth® Plus Cloths**

Chicopee® J-Cloth® Plus is constructed with a unique, open, wavy texture that enables efficient pick up of dirt particles. Easy to rinse, fast drying, lightweight – Chicopee® J-Cloth® Plus wipes remain cleaner and fresher for longer. Chicopee® J-Cloth® Plus can be used in combination with cleaning agents. Available in Blue, Green, Red, White, and Yellow. Folded. 61cm W x 36cm L. 10 x 50 sheets = 500 sheets/case.

**Code M36.H0450B** Blue

**Code M36.H0450R** Red

**Code M36.H0450W** White

**Code M36.H0450G** Green

**Code M36.H0450Y** Yellow



01

**Complete Broom**

Broom head, handle and stay.

18 Inch Bassine

Code M51.602.606.180

24 Inch Bassine

Code M51.602.606-240

18 Inch Coco

Code M51.602.600.180

24 Inch Coco

Code M51.600.600.240

36 Inch Coco

Code M51.602.600.360



03

**Wooden Handle**

These wooden broom handles are replacement attachments for 2.8cm broom heads. These broom handles are made from durable wood and feature a rounded dome on one end and a straight cut at the other.

4' x 15/16"

Code M51.H0718

5' x 1 1/8"

Code M51.H0719



05

**Coco Broomhead**

Coco has average wearing and sweeping properties, and is good for light dirt and dust. It tends to distort, however it is a very economic option.

12 Inch

Code M51.H0701

18 inch

Code M51.H0702

24 Inch

Code M51.H0703

36 Inch

Code M51.H0704



07

**13" Broomhead**

Stiff 330mm Flat Top Yard Broom - Bassine and cane filled wooden stock with a single hole. This product is ideal for sweeping Outdoor areas in both wet or dry conditions.

Bass

Code M51.H0713

Polybass

Code M51.H0714



02

**Large Metal Stay**

Zinc Plated 356mm Stay which is ideal for fitting 29mm Ø handles to any platform broom.

Code M51.H0720

**Galvanised Deluxe Stay**

29mm Galvanised Steel Socket. This product is ideal for fitting 29mm handles to any platform broom.

Code M51.H0721



04

**Gumati Broomhead**

This is the best material for light rubble and dried mud on smoother surfaces. It is very durable and does not crush or distort.

12 Inch

Code M51.H0709

18 Inch

Code M51.H0711

24 Inch

Code M51.H0712



06

**Bassine Broomhead**

Bassine is a more durable material and has moderate sweeping qualities for mud and rubble. It may distort with prolonged use.

12 Inch

Code M51.H0705

18 inch

Code M51.H0706

24 Inch

Code M51.H0707

36 Inch

Code M51.H0708



08

**Floor Scraper Zinc/Red**

A floor scraper for removing compacted soil or chewing gum. 1 harder grade blade for stone/ceramics.

Complete

Code M53.H0800

Replacement Blade

Code M53.H0801



# FROM FARM TO FOOD

YOUR COMPLETE CLEANING SOLUTION



FROM FLOOR BRUSHES TO DETECTABLE BRUSHWARE, RESIN-SET TO WOODEN BRUSHES, QUALITY CLEANING PRODUCTS ARE NECESSARY AT EVERY STAGE OF THE FOOD LIFE CYCLE.

THAT'S WHERE WE COME IN.



hillbrush®

01

**Churn Brush**

General Purpose Brush, which is ideal for builders. 263 mmL x 68 mmW x 100 mmH. Weight: 0.29 kg.

Code **M51.H0741**



02

**Scrubbing Brush**

This product is ideal for removing stubborn marks from all surfaces. 197 mmL x 62 mmW x 55 mmH. Weight: 0.16 kg.

Code **M51.H0740**



03

**Hand Brush 11"**

Ergonomic handle for ease of use. Soft coco material ideal for collection of small dust and dirt particles.

Coco (soft)

Code **M51.H0723**

Bassine (stiff)

Code **M51.H0724**



04

**8" Stiff Bassine Hand Scrub**

Stiff bassine material to remove any stubborn stains with a sturdy wooden block to aid in a steady scrubbing motion. 21cm x 6cm x 5.5cm.

Code **M51.H0740BR**



05

**Laundry Brush Union**

This product is ideal for removing stubborn marks from all surfaces. 159 mmL x 84 mmW x 45 mmH. Weight: 0.14 kg.

Code **M51.H0742**



06

**Wire Brush**

For removing rust, scale and general surface preparation.

Code **M51.H0752**



07

**Striker Brush Head**

Pure bristle head mounted on a 600mm (24") wooden handle.

Code **M51.H0749**



08

**Heavy Duty Wire Brush**

This product is ideal for removing rust, old paint from metal surfaces. 295 mmL x 32 mmW x 52 mmH. Weight: 0.17 kg.

3 Rows

Code **M51.H0751-T1**

2 Rows

Code **M51.H0751-T2**



09

**Industrial Nail Brush**

This product is ideal for removing heavy soiling from hands and fingertips. 122 mmL x 44 mmW. Weight: 0.07 kg. Available in Blue and Green.

- Blue  
Code M51.H0745
- Green  
Code M51.H0745-GN



10

**Wooden Nail Brush. Double sided**

This product is ideal for removing heavy soiling from hands and fingertips. 97 mmL x 36 mmW. Weight: 0.05 kg.

Code M51.H0744



11

**Cobweb Brush with telescopic handle**

Very Soft 150mm Domed Blue Cobweb Brush with Handle. 150 mmL x 130 mmW x 1960 mmH. Weight: 0.49 kg.

Code M51.H0746



12

**Toilet Brush & Holder**

This Toilet Brush Set is durable and easy to clean, helping to simplify your cleaning regime. An exceptional addition to any workplace and suitable for all washrooms, this semi-enclosed set has a strong plastic handle and tough bristles for an effective clean. Dimensions: 20.5 x 5.5 x 21.8mm. Weight: 316g.

Code M51.H0748

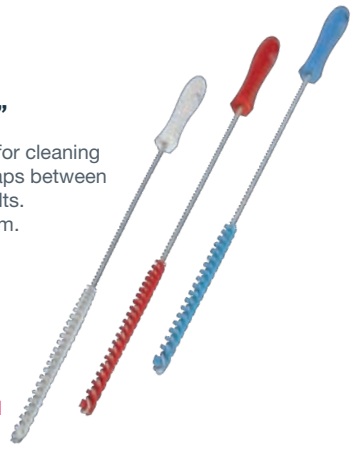


13

**Tube Cleaner 20"**

Tube Brush suitable for cleaning bottles, tubes and gaps between lines on conveyor belts. Size - 150x500x10mm.

- Blue  
Code M54.5375-BL
- Red  
Code M54.5375-RD
- White  
Code M54.5375-WH



14

**Toilet Brush & Bowl**

Stiff PVC material to remove stubborn grime. Ergonomic handle for ease of use. Includes pot for storage of brush.

Code M51.H0748B



15

**Soft PVC Handbrush**

This product is ideal for removing dust and light debris from worktops. 280 mmL x 36 mmW x 60 mmH. Weight: 0.11 kg. Available in Blue, Green, Red, and Yellow.

- Blue  
Code M51.H0725-BL
- Green  
Code M51.H0725-GN
- Red  
Code M51.H0725-RD
- Yellow  
Code M51.H0725-YW



16

**Hard PVC Handbrush**

This product is ideal for removing dust and heavy debris from worktops. 280 mmL x 36 mmW x 60 mmH. Weight: 0.11 kg. Available in Blue, Green, Red, Yellow.

- Blue  
Code M51.H0726
- Green  
Code M51.H0726-GN
- Red  
Code M51.H0726-RD
- Yellow  
Code M51.H0726-YW



01

**Long Handle Lobby Brush and Lobby Dustpan**

Brush and handle for use with lobby dustpans.

Brush

Code **M51.H0727**

Dustpan

Code **M51.H0730**



02

**PVC Standard Dustpan & Brush**

Rubber lip enhances sweeping effectiveness. Hanging hole ideal for storage purposes. Suitable for light sweeping tasks. Available in Blue, Green, Red, and Yellow.

Blue

Code **M51.H0725/H0728-BL**

Green

Code **M51.H0725/H0728-GN**

Red

Code **M51.H0725/H0728-RD**

Yellow

Code **M51.H0725/H0728-YW**



03

**PVC Standard Dustpan**

This product is ideal for cleaning small areas. Recommended for use in households. 330 mmL x 230 mmW. Weight: 0.10 kg. Available in Blue, Green, Red, Yellow.

Blue

Code **M51.H0728-BL**

Green

Code **M51.H0728-GN**

Red

Code **M51.H0728-RD**

Yellow

Code **M51.H0728-YW**



04

**Enclosed PVC Dustpan**

This product is ideal for removing large amounts of debris. 180 mmL x 300 mmW. Weight: 0.29 kg. Available in Blue, Green, Red, White, Yellow.

Blue

Code **M51.H0729-BL**

Green

Code **M51.H0729-GN**

Red

Code **M51.H0729-RD**

White

Code **M51.H0729-WH**

Yellow

Code **M51.H0729-YW**



05

**Soft Hygiene Hand Brush**

Hand brush with soft bristles is ideal for sweeping fine particles such as flour from conveyor belts, food preparation surfaces, tables and equipment. Available in Black, Blue, Green, Pink, Red, White, Yellow.

Black

**Code M54.H0821-BK**

Blue

**Code M54.H0821-BL**

Green

**Code M54.H0821-GN**

Pink

**Code M54.H0821-PK**

Red

**Code M54.H0821-RD**

White

**Code M54.H0821-WH**

Yellow

**Code M54.H0821-YW**

06

**Medium Hygiene Hand Brush**

Hand brush with medium bristles is ideal for sweeping fine particles such as flour from conveyor belts, food preparation surfaces, tables and equipment. Size - 250mm.

Black

**Code M54.H0822M-BK**

Blue

**Code M54.H0822M-BL**

Green

**Code M54.H0822M-GN**

Orange

**Code M54.H0822M-OR**

Purple

**Code M54.H0822M-PU**

Red

**Code M54.H0822M-RD**

White

**Code M54.H0822M-WH**

Yellow

**Code M54.H0822M-YW**

07

**Hand Brush Resin set  
12" Medium bristles**

This product is ideal for cleaning up medium particles, powders. Min Usage Temperature: -18°, Max Usage Temperature: 79°. Dimensions: 317 mmL x 36 mmW. Weight: 0.18 kg. Available in Black, Blue, Green, Red, White, Yellow.

Black

**Code M51.B864R-BK**

Blue

**Code M51.B864R-BL**

Green

**Code M51.B864R-GN**

Red

**Code M51.B864R-RD**

White

**Code M51.B864R-WH**

Yellow

**Code M51.B864R-YW**

08

**Utility Brush Resin set 10" Medium Bristles**

With a small surface area and short easily gripped handle, this is a really effective pot scrub and spot cleaner. It is perfect for cleaning off chopping boards, soft enough to get in grooves, not too 'flicky', resilient enough for a good scrubbing action without crushing. Available in Blue, Green, Red, White, Yellow.

Blue

**Code M51.B884R-BL**

Green

**Code M51.B884R-GN**

Red

**Code M51.B884R-RD**

White

**Code M51.B884R-WH**

Yellow

**Code M51.B884R-YW**

01

**Short Soft Utility Brush**

This small, light-weight brush has a broad head and an ergonomically angled handle. This design raises the user's hand from the cleaning surface reducing the risk of injury. Suitable for cleaning small surface areas, tables, pots, cutting boards etc. Available in Blue, Black, Green, Red, White, and Yellow.

Blue

**Code M54.H0823-BL**

Black

**Code M54.H0823-BK**

Green

**Code M54.H0823-GN**

Red

**Code M54.H0823-RD**

White

**Code M54.H0823-WH**

Yellow

**Code M54.H0823-YW**

02

**Long Stiff Utility Brush**

The long handle on this brush allows the operator to reach into parts of equipment that are hard to access. The angled stiff bristles are soft enough to create a washing action, e.g. cleaning machines, deep buckets, containers and tubs. Available in Blue, Green, Red, White, and Yellow. Size - 410mm.

Blue

**Code M54.H0824-BL**

Green

**Code M54.H0824-GN**

Red

**Code M54.H0824-RD**

White

**Code M54.H0824-WH**

Yellow

**Code M54.H0824-YW**

03

**Hygiene Churn Brush Medium**

Ergonomically designed short handled churn brush with medium bristles. A versatile brush suitable for everyday cleaning, ideal for stubborn dirt on conveyor belts, production lines, machinery and food preparation surfaces. Available in Blue, Green, Red, White, Yellow.

Blue

**Code M54.H0820M-BL**

Green

**Code M54.H0820M-GN**

Red

**Code M54.H0820M-RD**

White

**Code M54.H0820M-WH**

Yellow

**Code M54.H0820M-YW**

04

**Stiff Hygiene Nail Brush**

This brush can be used for cleaning hands/arms as well as small tables/surfaces and containers. Available in Black, Blue, Green, Red, White, Yellow.

Black

**Code M54.H0827-BK**

Blue

**Code M54.H0827-BL**

Green

**Code M54.H0827-GN**

Red

**Code M54.H0827-RD**

White

**Code M54.H0827-WH**

Yellow

**Code M54.H0827-YW**

# Vikan Cleaning Tools

At Vikan, we are passionate about cleaning tools. In how they are designed. The materials they are made from. The way they are manufactured, and the solutions they provide. Effective cleaning requires the right tools, and at Vikan we have the right tools to get the job done the first time, every time.

In everything we do, we help to make sure our customers – through cleaner and safer environments – can deliver the products and services they produce with pride and confidence.

## Our promise to customers

### Right tools for the job

- Solve your cleaning or hygiene challenge with effective ergonomic cleaning and food handling tools.

### Unrivalled quality

- Assurance that your tools will keep working effectively longer.

### Innovation

- Tackle significant problems, gain unexpected benefits, and set the standard in your sector or market.

### Hygiene and food safety expertise

- Raise your hygiene standards with the help of unmatched hygiene expertise and knowledge-sharing.



01

**Stiff Hygiene Nail Brush**

This brush can be used for cleaning hands/arms as well as small tables/surfaces and containers. Available in Black, Blue, Green, Red, White, Yellow.

Blue Extra Stiff  
Code M54.H0828-BL

Green Extra Stiff  
Code M54.H0828-GN

Red Extra Stiff  
Code M54.H0828-RD

Yellow Extra Stiff  
Code M54.H0828-YW

Blue Stiff  
Code M54.H0828ST-BL

Green Stiff  
Code M54.H0828ST-GN

Red Stiff  
Code M54.H0828ST-RD

Yellow Stiff  
Code M54.H0828ST-YW



02

**Circular Hygiene Scrubbing Brush**

Round Hand Scrub with stiff bristles, ideal for cleaning conveyor belts and food containers. The design of this brush allows the user to put a more even pressure on the brush during use, making the cleaning process more effective and efficient. Available in Blue, Green, Red, White, Yellow.

Blue  
Code M54.H0829-BL

Green  
Code M54.H0829-GN

Red  
Code M54.H0829-RD



03

**Hygiene Tube Brush**

Tube Brush suitable for cleaning bottles, tubes and gaps between lines on conveyor belts. 510mm long. Available in 40mm, 50mm, and 60mm diameter, and in Blue, Green, Red, White, Yellow.

Blue 40mm  
Code M54.H0830-BL

Blue 60mm  
Code M54.H0832-BL

Green 40mm  
Code M54.H0830-GN

Green 60mm  
Code M54.H0832-GN

Red 40mm  
Code M54.H0830-RD

Red 60mm  
Code M54.H0832-RD

White 40mm  
Code M54.H0830-WH

White 60mm  
Code M54.H0832-WH

Yellow 40mm  
Code M54.H0830-YW

Yellow 60mm  
Code M54.H0832-YW

Blue 50mm  
Code M54.H0831-BL

Green 50mm  
Code M54.H0831-GN

Red 50mm  
Code M54.H0831-RD

White 50mm  
Code M54.H0831-WH

Yellow 50mm  
Code M54.H0831-YW



04

**Aluminium Hygiene Handle**

Aluminium handle with colour coded grip. Can be used with any product within the Vikan colour coded range. Available in Blue, Green, Orange, Red, White, Yellow. Size - 1500mm.

Blue

**Code M54.H0850-BL**

Green

**Code M54.H0850-GN**

Orange

**Code M54.H0850-OR**

Red

**Code M54.H0850-RD**

White

**Code M54.H0850-WH**

Yellow

**Code M54.H0850-YW**

05

**Ergonomic Aluminium Hygiene Handle**

Ergonomically designed handle improves the working position of the user with a comfortable grip, rounded top and hanger. Can be used with any product requiring a handle within the Vikan colour coded range. Do not use this handle with acid or chlorine. Available in Blue, Green, Orange, Red, White, Yellow. Size - 1300mm.

Blue

**Code M54.H0851-BL**

Green

**Code M54.H0851-GN**

Orange

**Code M54.H0851-OR**

Red

**Code M54.H0851-RD**

White

**Code M54.H0851-WH**

Yellow

**Code M54.H0851-YW**

06

**Aluminium Telescopic Handle**

This telescopic handle can be easily adjusted to the required length making it suitable for cleaning walls and canopies. Ergonomically designed to improve the working position of the user with a comfortable grip. Can be used with any product requiring a handle within the Vikan colour coded range. Do not use this handle with acid or chlorine. Extends from 1575 - 2780mm. Available in Black, Blue, Green, Orange, Red, White, Yellow.

Black

**Code M54.H0852-BK**

Blue

**Code M54.H0852-BL**

Green

**Code M54.H0852-GN**

Red

**Code M54.H0852-RD**

White

**Code M54.H0852-WH**

Yellow

**Code M54.H0852-YW**

07

**Ergonomic Aluminium Waterway Handle**

Waterfed handle with quick release coupling. Ergonomically designed to improve the working position of the user with a comfortable grip. Can be used with any product requiring a waterfed handle within the Vikan colour coded range. Max pressure 6 bar and max temperature 50°C. Do not use this handle with acid or chlorine.

**Code M54.H0853**

01

**Twin Blade Rubber Squeegee**

Double blade squeegee provides effective removal of both water and food debris from all types of flooring. The cassette is removed easily for cleaning or replacement. Can be used with any handle within the Vikan colour coded range. Available in Blue, Green, Red, White, Yellow and in both 400mm/16" and 600mm/24" wide.

Blue 400mm <b>Code M54.H0840-BL16</b>	Black 600mm <b>Code M54.H0841-BK</b>
Green 400mm <b>Code M54.H0840-GN16</b>	Blue 600mm <b>Code M54.H0841-BL</b>
Red 400mm <b>Code M54.H0840-RD16</b>	Green 600mm <b>Code M54.H0841-GN</b>
White 400mm <b>Code M54.H0840-WH16</b>	Red 600mm <b>Code M54.H0841-RD</b>
Yellow 400mm <b>Code M54.H0840-YW16</b>	White 600mm <b>Code M54.H0841-WH</b>
	Yellow 600mm <b>Code M54.H0841-YW</b>



Replacement Blade 400mm  
**Code M54.H0842-BK**

Replacement Blade 600mm  
**Code M54.H0843-BK24**

02

**Ultra One Piece Squeegee**

Ultra Hygienic Squeegee which is ideal for removing excess liquid in high risk areas. 400mm/16" and 600mm/24" wide.

Blue 400mm <b>Code M54.H0844-BL</b>	Blue 600mm <b>Code M54.H0845-BL</b>
Green 400mm <b>Code M54.H0844-GN</b>	Green 600mm <b>Code M54.H0845-GN</b>
Red 400mm <b>Code M54.H0844-RD</b>	Orange 600mm <b>Code M54.H0845-OR</b>
White 400mm <b>Code M54.H0844-WH</b>	Red 600mm <b>Code M54.H0845-RD</b>
Yellow 400mm <b>Code M54.H0844-YW</b>	Violet 600mm <b>Code M54.H0845-VI</b>
	White 600mm <b>Code M54.H0845-WH</b>
	Yellow 600mm <b>Code M54.H0845-YW</b>



03

**Hygiene Soft Brush head**

This soft floor broom is suitable for use in dry environments such as flour stores. It is ideal for sweeping flour and starch as well as other dry powders. Must only be used in dry areas. Split filaments do not fulfill the demands of the Hygiene Charter. Can be used with any handle within the Vikan colour coded range. Available in Black, Blue, Green, Red, White, Yellow. Size - 12".

Black

**Code M54.H0812-BK**

Blue

**Code M54.H0812-BL**

Green

**Code M54.H0812-GN**

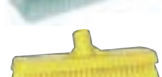
Red

**Code M54.H0812-RD**

White

**Code M54.H0812-WH**

Yellow

**Code M54.H0812-YW**

04

**Hygiene Medium Brush head**

Suitable for sweeping medium particles and can be used in both dry and damp environments. Ideal for use in smaller areas within food production. Can be used with any handle within the Vikan colour coded range. Available in Black, Blue, Green, Red, White, Yellow. Size - 12".

Black

**Code M54.H0811-BK**

Blue

**Code M54.H0811-BL**

Green

**Code M54.H0811-GN**

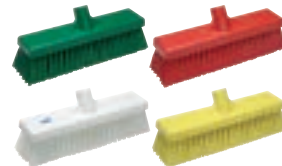
Red

**Code M54.H0811-RD**

White

**Code M54.H0811-WH**

Yellow

**Code M54.H0811-YW**

05

**Hygiene Stiff Brush head**

This heavy duty broom is ideal for sweeping heavy/large particles. This brush is suitable for use in wet and external areas and can be used with any handle within the Vikan colour coded range. Available in Black, Blue, Green, Red, White, Yellow. Size - 12".

Black

**Code M54.H0810-BK**

Blue

**Code M54.H0810-BL**

Green

**Code M54.H0810-GN**

Red

**Code M54.H0810-RD**

White

**Code M54.H0810-WH**

Yellow

**Code M54.H0810-YW**

06

**Deck Scrub Resin set 12" Extra Stiff bristles**

Heavily built for durability and effectiveness in tough environments. This is the ideal scrubbing brush for really tough ingrained dirt. 300 mmL x 75 mmW. Weight: 0.58 kg. Available in Blue, Green, Red, White, Yellow.

Blue

**Code M51.B759R-BL**

Green

**Code M51.B759R-GN**

Red

**Code M51.B759R-RD**

White

**Code M51.B759R-WH**

Yellow

**Code M51.B759R-YW**

01

**Hygiene Soft/Stiff Brush head**

This sweeping broom has two types of bristles. When pushing the broom forward the front rows, which have firm bristles, loosen the dirt and push heavier debris. The softer bristles of the back rows, gather the finer particles. It is suitable for all areas in kitchens and restaurants, and is available in Black, Blue, Green, Red, White, and Yellow. Size - 16".

Black

**Code M54.H0813-BK**

Blue

**Code M54.H0813-BL**

Green

**Code M54.H0813-GN**

Red

**Code M54.H0813-RD**

White

**Code M54.H0813-WH**

Yellow

**Code M54.H0813-YW**

02

**Narrow Resin set Broom Head  
16" Soft bristles**

This is an ideal broom for sweeping finer materials in open areas, and is light and manoeuvrable. Available in Blue, Green, Red, White, and Yellow.

Blue

**Code M51.B1082R-BL**

Green

**Code M51.B1082R-GN**

Red

**Code M51.B1082R-RD**

White

**Code M51.B1082R-WH**

Yellow

**Code M51.B1082R-YW**

03

**Hygiene Soft/Stiff Brush head**

This sweeping broom has two types of bristles. When pushing the broom forward the front rows, which have firm bristles, loosen the dirt and push heavier debris. The softer bristles of the back rows, gather the finer particles. It is suitable for both wet and dry sweeping, and is available in Black, Blue, Green, Red, White, and Yellow. Size - 24".

Black

**Code M54.H0814ST-BK**

Blue

**Code M54.H0814ST-BL**

Green

**Code M54.H0814ST-GN**

Red

**Code M54.H0814ST-RD**

White

**Code M54.H0814ST-WH**

Yellow

**Code M54.H0814ST-YW**

04

**Hygiene Medium Brush head**

This floor broom is suitable for sweeping fine particles in large dry and damp areas. Use with any handle within the Vikan colour coded range. Available in Black, Blue, Green, Red, White, Yellow. Size - 24".

Black

**Code M54.H0814M-BK**

Blue

**Code M54.H0814M-BL**

Green

**Code M54.H0814M-GN**

Red

**Code M54.H0814M-RD**

White

**Code M54.H0814M-WH**

Yellow

**Code M54.H0814M-YW**

05

**Hygiene Waterfed Deck Scrub Brush**

This deck scrub has very effective water distribution and is ideal for use in heavily soiled areas such as abattoirs and meat processing plants. Available in Blue, Green, Orange, Red, White, Yellow.

- Blue  
Code M54.H0825-BL
- Green  
Code M54.H0825-GN
- Orange  
Code M54.H0825-OR
- Red  
Code M54.H0825-RD
- White  
Code M54.H0825-WH
- Yellow  
Code M54.H0825-YW



06

**Hygiene Hand Shovel Polypropylene**

Lightweight and durable hand shovel. Its one piece construction eliminates areas where bacteria can be harboured. Smooth surface makes it extremely easy to clean, ideal for use in food production areas for moving food ingredients or large quantities of food waste. 327 x 271 x 50mm. Available in Black, Blue, Green, Orange, Red, White, and Yellow.

- Black  
Code M54.H0862-BK
- Blue  
Code M54.H0862-BL
- Green  
Code M54.H0862-GN
- Orange  
Code M54.H0862-OR
- Red  
Code M54.H0862-RD
- White  
Code M54.H0862-WH
- Yellow  
Code M54.H0862-YW



06

**Hand Scoop**

Ergonomically designed hand scoop is lightweight and durable. Its one piece construction eliminates areas where bacteria can be harboured. Smooth surface makes it extremely easy to clean, ideal for use in food production areas for moving food ingredients. Available in Medium (320mm x 120mm) and Large (360mm x 160mm) and in Blue, Green, Pink, Red, White, Yellow.

- |                                    |                                   |
|------------------------------------|-----------------------------------|
| Blue Medium<br>Code M54.H0864-BL   | Blue Large<br>Code M54.H0865-BL   |
| Green Medium<br>Code M54.H0864-GN  | Green Large<br>Code M54.H0865-GN  |
| Pink Medium<br>Code M54.H0864-PK   | Pink Large<br>Code M54.H0865-PK   |
| Red Medium<br>Code M54.H0864-RD    | Red Large<br>Code M54.H0865-RD    |
| White Medium<br>Code M54.H0864-WH  | White Large<br>Code M54.H0865-WH  |
| Yellow Medium<br>Code M54.H0864-YW | Yellow Large<br>Code M54.H0865-YW |



01

**Hygiene Shovel T-Grip short handle with flat blade**

This product is ideal for moving bulk ingredients and removing large amounts of debris. Available in Blue, Green, Orange, Red, White, Yellow. 320 mm L x 260 mm W. Weight: 0.94 kg.

Blue

**Code M54.H0860-BL**

Green

**Code M54.H0860-GN**

Orange

**Code M54.H0860-OR**

Red

**Code M54.H0860-RD**

White

**Code M54.H0860-WH**

Yellow

**Code M54.H0860-YW**

02

**Hygiene Shovel D-Grip short handle with large blade**

Lightweight and durable shovel. Its one piece construction eliminates areas where bacteria can be harboured. Smooth surface makes it extremely easy to clean, ideal for use in food production areas for moving food ingredients or large quantities of food waste. Available in Blue, Green, Red, Yellow.

Blue

**Code M54.H0861-BL**

Green

**Code M54.H0861-GN**

Red

**Code M54.H0861-RD**

Yellow

**Code M54.H0861-YW**

03

**Hygiene Hand Scraper**

This product is ideal for removing stubborn food debris from worktops and production lines. Available in Blue, Green, Red, Yellow. 247 mm L x 110 mm W. Weight: 0.08 kg.

Blue

**Code M54.H0867-BL**

Green

**Code M54.H0867-GN**

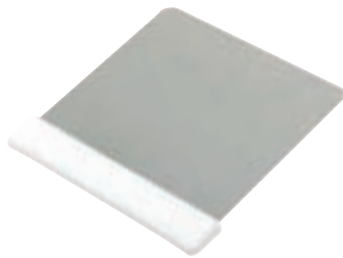
Red

**Code M54.H0867-RD**

White

**Code M54.H0867-WH**

Yellow

**Code M54.H0867-YW**

04

**Hygiene Hand Scraper 205mm x 76mm**

Narrow hand scraper allows access to small areas and rounded equipment like large bowls. It is useful for loosening stubborn dirt i.e. pastry, chocolate, burnt food, etc. The polypropylene construction reduces the possibility of scratching sensitive surfaces. Available in Blue, Green, Orange, Red, Yellow.

Blue

**Code M54.H0866-BLS1**

Green

**Code M54.H0866-GNS1**

Orange

**Code M54.H0866-ORS1**

Red

**Code M54.H0866-RDS1**

Yellow

**Code M54.H0866-YWS1**

05

**Hygiene Hand Scraper 205mm x 110mm**

This product is ideal for removing stubborn food debris from worktops and production lines. Available in Blue, Green, Red, Yellow. 247 mmL x 110 mmW. Weight: 0.08 kg.

- Blue  
**Code M54.H0866-BLS2**
- Green  
**Code M54.H0866-GNS2**
- Red  
**Code M54.H0866-RDS2**
- Yellow  
**Code M54.H0866-YWS2**



07

**Hygiene Paddle - Replacement head**

Ideal for use as a mixing tool for cooking pots. Can be used with any handle within the Vikan colour coded range. Only available in white.

**Code M54.H0863-WH**

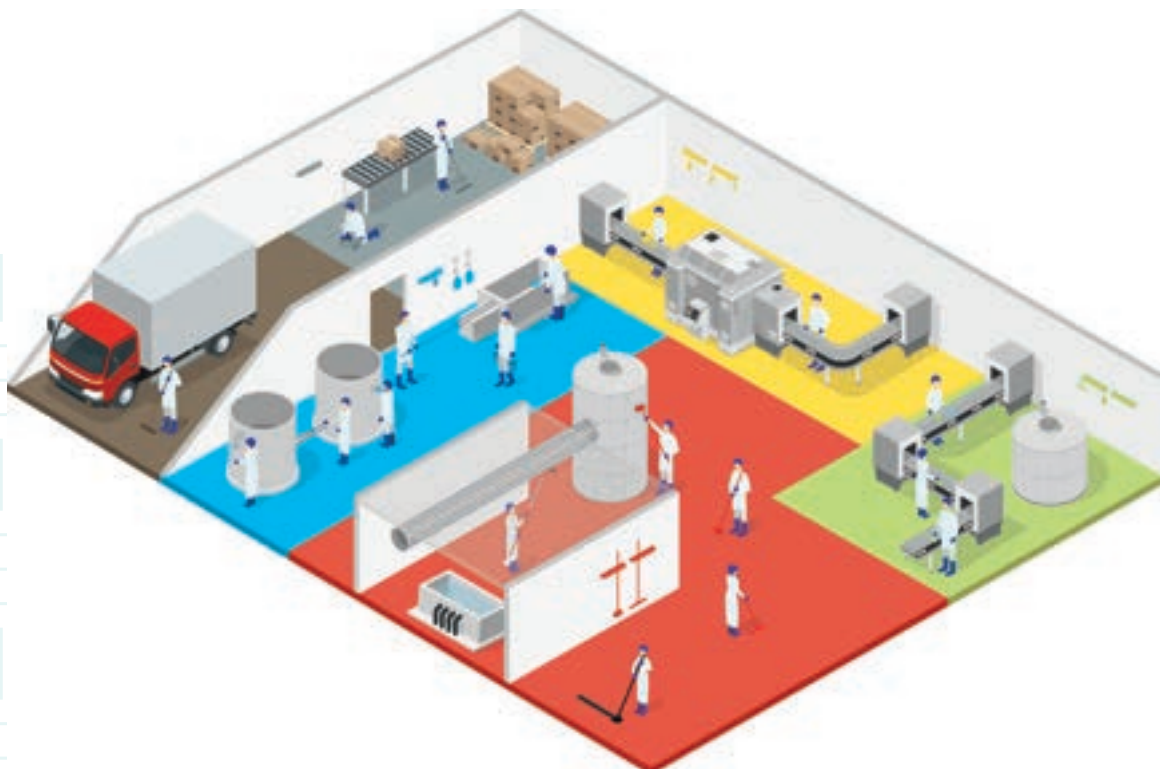


06

**Wall Bracket 240mm**

This Wall Bracket has an ultra hygienic design. It has a smooth, easy to clean surface without holes or crevices to harbour dirt and debris. Storing cleaning tools on Wall Brackets increases the durability of the tools. Available in Black, Blue, Green, Orange, Purple, Red, White, Yellow.

- Black  
**Code M54.0615-BK**
- Blue  
**Code M54.0615-BL**
- Green  
**Code M54.0615-GN**
- Orange  
**Code M54.0615-OR**
- Purple  
**Code M54.0615-PU**
- Red  
**Code M54.0615-RD**
- White  
**Code M54.0615-WH**
- Yellow  
**Code M54.0615-YW**



**The Vikan Site Survey**

If you have a factory audit scheduled for the near future, you'll naturally want to satisfy auditors and earn a stamp of approval for your hygiene operations.

A Vikan Site Survey is a great way to improve the certainty of passing – and in fact to move beyond just passing audits to getting ahead of the field as

a hygiene leader. A Site Survey involves a thorough inspection of your plant with a view to identifying and solving hygiene problems before the auditors find them.

01

**Standard Water-fed Vehicle Brush**

Vehicle brush with Water channel and protective rubber edge. Black polypropylene and red/green VTS flagged polyester filament. Extremely effective and will give excellent cleaning results. Rinse thoroughly. Then store upright & allow to air dry after each use. Available in Small, Medium, and Large.

Small 66 x 200mm  
Code M43.526952

Medium 80 x 250mm  
Code M43.475552

Large 80 x 350mm  
Code M43.475752



02

**Adjustable Water-fed Vehicle Brush 140 x 280mm**

The angle adjustable feature of this effective wash brush enables it to work effectively in high and difficult to access areas. It has angled filaments allowing effective cleaning coverage, and although water-fed this brush can be used with a bucket. Can be used with any handle within the Vikan Transport System.

Code M43.526852



03

**Upholstery Vehicle Brush 270mm**

Slimline upholstery and carpet cleaning brush. Ideal for cleaning in areas with limited access i.e. under and in between seats and seat runners. Black foamed polypropylene and red/green polyester w/stiff bristles.

Code M43.450052



04

**Water-fed Vehicle Brush with VTS 47 x 280mm**

Effective, water-fed, vehicle wash brush where close attention to detail cleaning is required. Black polypropylene and red/green VTS flagged polyester filament.

Code M43.525452



05

**Hi-Lo Brush Head**

The angled design of this safe & effective High Lo wash brush enables the brush to be in constant contact with surfaces during washing. Rinse thoroughly. Then store upright & allow to air dry after each use. Important: The HiLo vehicle wash brush MUST NOT BE used on Curtain sided trailers or units. Please use Wash Brushes: M43.475552/M43.475752/M43.526452 for the most satisfactory results.

Code M43.524752



06

**Multi-purpose Vehicle Brush 57 x 410mm**

Long handled vehicle brush suited to wheel/body cleaning. Black foamed polypropylene and red/green VTS flagged polyester filament.

Code M43.522252



07

**Ice/Snow Vehicle Scraper/Brush**

Ideal in arctic conditions for the removal of snow or ice. Black polypropylene and red polyester filaments. 450mm.

Code M43.520052



08

**Twisted Wire Wheel Brush 30 x 130mm**

Medium, tapered wheel brush for detail cleaning. Red/green polyester filaments twisted in plastic coated wire - stiff.

Code M43.525352



09

**Standard Window Cleaning Vehicle Tool**

Ideal for cleaning windscreens. 500mm handle and 200mm scraper.

Code **M43.473752**



11

**Telescopic Window Cleaning Vehicle Tool**

Perfect for Trucks and Coaches. 200mm scraper and 600-1250mm handle.

Code **M43.473952**



12

**Ergonomic Handle with insulated sleeve grip**

Professional aluminium handle with insulating sleeve for a comfortable grip.

1.5m

Code **M43.293752**

1.5-2.75m telescopic

Code **M43.297552**



14

**Pad holder for vehicle cleaning Swivel, non-abrasive head**

Polypropylene swivel-action pad holder, for large glass windscreen cleaning, with pad locking system for pad M43.552552 and any threaded Vikan handle.

Code **M43.55004**



10

**Water-fed Handle with insulated sleeve grip**

Professional aluminium waterfed handle with insulating sleeve for a comfortable grip with tapered hose connector. Available in 1m, 1.5m, and telescopic options.

1m

Code **M43.299252**

1.5m

Code **M43.299152**

Telescopic 1.5m - 2.75m

Code **M43.297352**



13

**Wipe + Shine Squeegee**

Rapid and efficient removal of fresh rinse water from newly cleaned surfaces. Gentle on paintwork and removes lime residue, and has a flexible blade which follows vehicle contours. Hard wearing rubber blade. Can be fitted to any Vikan handle for high reach drying after rinsing.

25cm

Code **M43.707752**

35cm

Code **M43.707852**

45cm

Code **M43.707952**



15

**Vehicle Floor Squeegee 600mm**

Floor squeegee made of black polypropylene with black cellular rubber blade which removes water and oil effectively. Can be used with any handle within the Vikan Transport System.

Code **M43.708852**



01

**8oz Heavyweight Paper Cup White 250ml (x1000)**

Made from high quality food grade paper board, our premium grade single wall plain white cups are suited to the needs of many food service operators. Each cup is printed with it's very own batch number so we can easily trace the cup back through the manufacturing process.

**Code M59.SP23185-T1**

02

**7oz White disposable plastic cup (x2000)**

Cup for conferences or for use with water dispensers. Cost effective alternative to using real glasses.

**Code M59.PC7S**

03

**16oz Waxed Cups (x100)**

Wax coating make cups extra-rigid and durable. Satin-smooth finish inside and out. 2-piece construction with tightly oiled rim.

**Code M59.H8052**

04

**7oz Blue Water Cups (x1000)**

Ideal cup for water coolers. Presented in a printed box.

**Code M59.SP21915**

05

**4-5oz Drinking Cones (x5000)**

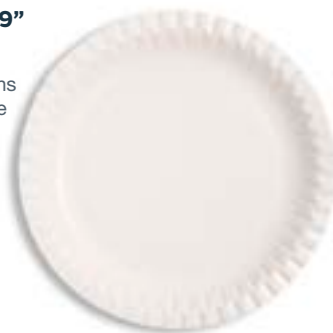
Cone Shaped Paper Cups, ideal for Water Coolers, Gyms, Schools, Canteens, Offices & Factory's.

**Code M59.H8053**

06

**Disposable Paper Plate 9" diameter (x1000)**

Perfect for parties, celebrations and catering events, Fine Dine Paper Plates are extremely cost effective and suitable for both hot and cold food.

**Code M59.SP23669**

07

**Disposable Plastic Cutlery (x1000)**

Disposable Cutlery set Silver Knife, Fork, Spoon, Napkin (x200)

**Code M59.SP29358**

08

**Disposable Plastic Cutlery (x1000)**

Perfect for on the go meals and provides a range of cost effective, disposable and hygienic plastic cutlery.

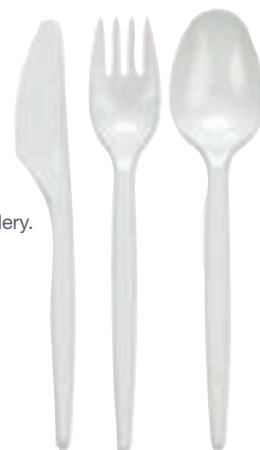
Knife

**Code M59.SP27551**

Fork

**Code M59.SP27567**

Dessert Spoon

**Code M59.SP27524**

09

**2 ply white paper napkins (x2000)**

Perfect for large parties and buffets, these quality white napkins are also equally suited to use in restaurants and hotels. Completely disposable, they provide a great alternative to linen. Available in 33cm and 40cm.

33 x 33cm

Code **M59.SP23312**

40 x 40cm

Code **M59.SP23927**



10

**Flexible Straws**

Black Flexible individually wrapped straws 195mm (x10000)

Code **M59.SP27051**



11

**Round White Coaster (x10000)**

8 ply Round White Coaster 90mm Unwaxed (x10000)

Code **M59.SP28862**



12

**Wrapmaster Clingfilm/foil Dispenser 4500**

An ideal choice for professional catering, the Wrapmaster 4500 dispenser provides an effortless solution to dispensing foil or cling film, with a neat and tangle free cut every time. The dispenser is safe and easy to use, with an enclosed cutting mechanism, which grips hold of the film or foil ready for the next use. It is hygienic and dishwasher safe, and will take Wrapmaster refills up to 45cm in width. An easy and hassle free way of dispensing your catering foil and film while reducing wastage.

Dispenser

Code **M59.SP27569**

Clingfilm Refill x3 - 300m

Code **M59.SP28054**

Foil Refill x3 - 90m

Code **M59.SP28233**



# Information & Delivery

Germs and bacteria that cause common illnesses are invisible to the naked eye. Wherever you are, germs are spread from person-to-person and by touching everyday surfaces, so enclosed environments – like the workplace – are particularly at higher risk of the spread of germs.

The single most effective method of spreading germs is via the hands, however over half of all workers do not know the basics of hand washing. 40% of workers don't wash their hands often or long enough to protect against the spread of germs, 65% of maintenance and construction workers and 47% of office workers wash their hands less than 5 times a day, and the average hand washing duration is less than 10 seconds missing vital areas where germs are commonly found.

Businesses lose millions of working days every year due to employee sickness from seasonal illnesses, however it can be easy for business to think of skin care as a trivial issue or a commodity buy. However, encouraging proper hand hygiene through a structured system helps to protect your employees health as well as the operational health of your company.

## HACCP Colour Coding Zones

### Avoid Cross Contamination



yellow zone



blue zone



green zone



purple zone



red zone



black zone



orange zone

## Delivery

Order before 2pm  
**FREE** next day delivery  
on orders over £50.00

