

Power & Utilities







2-3	Contents
4-5	Our Team
6-7	Why Tower
8-9	Experience
10-11	Partnership
12-13	Sustainability
14-15	Innovation



Bruce Woodfield
Divisional Managing Director



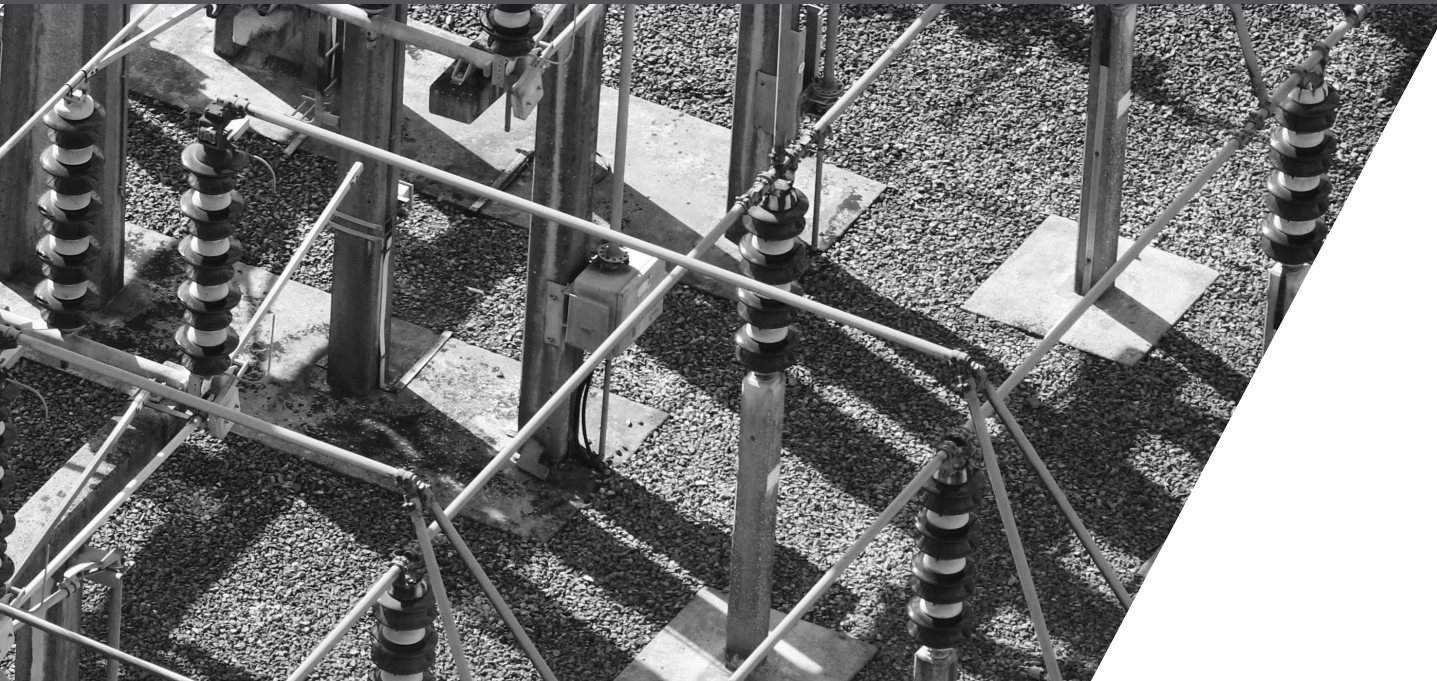
Division leader and authority on FR, arc flash, and PPE solutions

“I understand that people work every day in areas with a high risk of injury. That’s what motivates me to find and provide unique PPE solutions through innovation, consultancy, and control.”

“Having spent a lot of my working life on the practical side of the contracting world, it’s become my passion to provide everything that’s required to ensure that safety is never compromised.”

“Being at the forefront of global requirements (in Canada, Australia, and around Europe) has meant I can now deliver expert technical advice and pass on first-hand experience to customers.”

“I provide the most up to date information regarding the industry, to ensure best practice and help guarantee safety for employees, security for the employer, and peace of mind for everyone.”



Jerry Turner
Business Development Manager

Provider, trainer, and adviser with a passion for FR and arc protection

“As my passion lies in FR and arc PPE, I work with customers to help them make their workplace safer with surveys and new safety innovation.”

“I deliver the Tower vision: To provide intelligent solutions that protect and enhance. I ensure customer satisfaction and staff fulfilment and go the extra mile to develop solutions.”

“I always know when a business needs Tower’s products, services, training, site-surveys, and innovation in all areas of health, safety, and even hygiene.”

“By working closely with our customer services department, I make sure that every customer’s needs are identified and met first time, every time.”

Tower was founded in 1983 by the Aris family. Since then, our Chairman, Daniel Aris, has relentlessly driven the company's strategy forward. The focus on our core values of innovation, integrity, and respect, helps us to build a stronger supply chain and grow our customer base.





We work with the biggest names in Power & Utilities such as SGN, SSE, and Anglian Water. Our partnerships are built on working closely with companies, continually innovating, and providing knowledge, expert advice, and market leading solutions to today's problems.

Developed by us, FireBear is our own range of flame retardant, anti-static, and arc resistant workwear and technical protective clothing. The FireBear range covers all layering requirements, with products suitable for working with renewables, oil & gas, electricity, and in the utilities sector.



A large, silver, corrugated metal pipe runs diagonally across the frame from the bottom right towards the top left. The pipe is set against a background of lush green grass and trees. The image is overlaid with semi-transparent white and grey geometric shapes.

We have built up a wealth of experience over several decades, accumulating all the accreditations and memberships that reassure partners they're working with a trusted supplier. We're active members of the British Safety Industry Federation (BSiF) with a proportion of staff BSiF accredited.



Regularly taking part in roadshows, safety awareness events, and safety hubs, ensures we precisely understand EN safety and FR and arc standards. Our breadth of understanding covers several generations of power, renewables, thermal, and hydro industries.

We have worked closely with manufacturers to become a specialist in breathing apparatus, confined spaces, and working at height. Our range of products provides full head-to-toe protection, and we understand how to combine layers to deliver the most suitable protection for you.



Our partnerships extend beyond immediate clients to their suppliers and sub-contractors. These relationships are an extension of our position as a trusted partner. We work with manufacturers, brands, and designers, to consistently provide unrivalled value, expertise, products, and services.





We believe in open communication and working together to reach common goals. Overcoming issues and solving problems is one of the most common routes to progress and the development of new products, changes in process, and new, better ways of working.

As well as supplying the best products, we also understand the best way to use products too. We visit client sites with manufacturers to help make improvements in safety, hygiene, comfort, and cost-in-use, and partner with test houses in the UK and EU.

Sustainability is a big challenge. That's why we keep it at the heart of what we do. We work with partners and manufacturers who share the same goals and values, to keep the supply chain sustainable, offer suitable PPE and workwear options, and bring the source closer to home.



We help develop products made from recycled materials, recycling programmes, biodegradable disposables, the reduction of chemicals, and water-based cleaning and sanitising. Tower also offer a textile destruction and recycling service called Zero Waste to support the circular economy.

Our commitment to sustainability is also achieved through internal initiatives such as vans, lighting, packaging, recycling, reusing, and monitoring. We are on a Scope 3 emissions journey, which means identifying our impact on others in the supply chain and taking responsibility for change.

We put a big focus on LTV (lifetime value) and cost-in-use. This means working closely with partners to help them make better long-term decisions about how they buy their PPE, workwear, and uniforms, such as choosing products that last longer and are made from better materials.



Innovation is central to our partnership approach. We're constantly searching for new products, solutions, and looking for events and exhibitions where we can speak to manufacturers and clients about how we can do things better and tackle present and future challenges.





As well as working with key manufacturers we also create innovative solutions ourselves. We've developed our own range of FR and arc resistant clothing in FireBear, and helped develop foul weather jackets, the Flowmaster Fresh Air Breathing Apparatus, and safety equipment.

As a member of BTTG, our comprehensive testing means that we understand exactly what you need to do to protect against the risks you identify. We engage with clients to ensure that by utilising our unique layering solutions they are fully protected from the risks in their working environment.



For more information and details,
please contact the Power & Utilities
team here at Tower.

01202 305551
power@towersupplies.com

wearetower.com