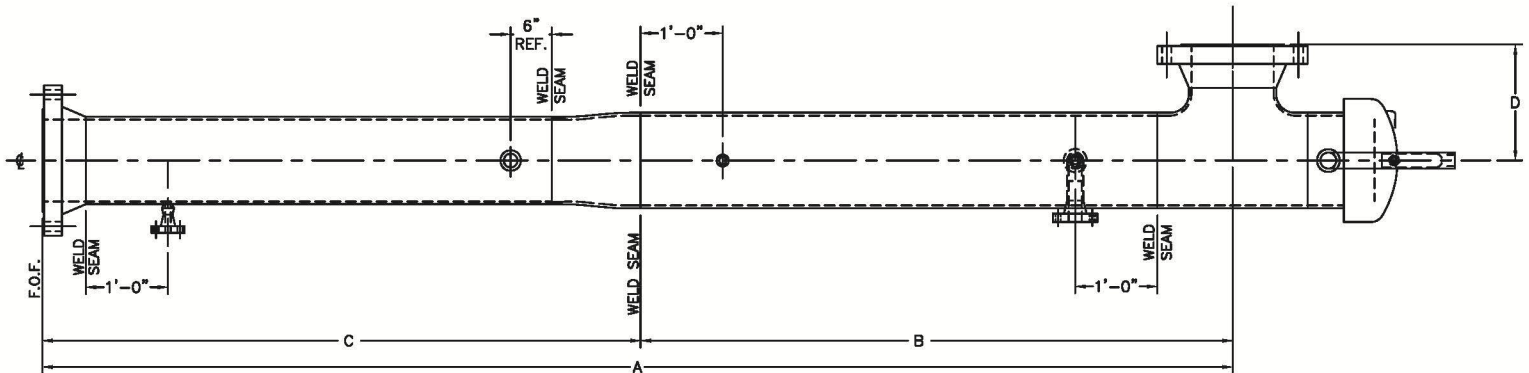
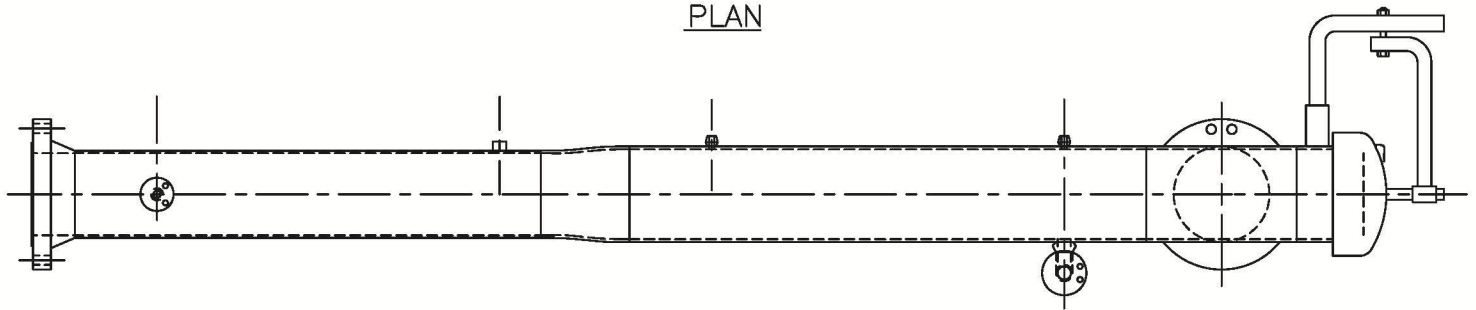


PIG RECEIVERS



PLAN



ELEVATION

LINE SIZE	BARREL O.D.	MAIN LINE O.D.	CROSSOVER O.D.	A	B	C	D
4"	6 5/8"	4 1/2"	3 1/2"	13'-11 7/8"	6'-6 3/8"	7'-5 1/2"	8 1/8"
6"	8 5/8"	6 5/8"	4 1/2"	24'-11"	11'-11"	13'-0"	10 1/4"
8"	10 3/4"	8 5/8"	6 5/8"	28'-10 1/2"	13'-9 1/2"	15'-1"	1'-0 1/4"
10"	12 3/4"	10 3/4"	8 5/8"	26'-2"	12'-4"	13'-10"	1'-2 1/2"
12"	14"	12 3/4"	10 3/4"	24'-6"	11'-3"	13'-3"	1'-4 1/8"
14"	16"	14"	12 3/4"	24'-6"	11'-2"	13'-4"	1'-5 1/2"
16"	18"	16"	14"	25'-5 1/2"	11'-6 1/2"	13'-11"	1'-7 0"

Standard Features:

- ANSI B31.3 / B31.4 / B31.8 Design
- Threaded Closure
- Mechanical clean and shop primer
- NDT per design code
- Full material traceability
- Hydrostatic test
- NDE per code

Options:

- Alternate style closures available
- Bolted Blind Flange Closure, any closure brand
- Alternate dimensions to suit project requirements
- Larger sizes and pressure ratings available
- Special Coatings
- Saddles / Legs / Skid
- Vertical configuration
- Complete skid mounted assemblies
- Pig signallers
- 100% radiography
- Flanged Closure joint to Barrel
- Internal trays, vessel supports

Dimensions are suggested and subject to change