

**WILTSHIRE
CREATIV** 



Turn over for our Festival brochure!

SUPPORT US TO KEEP CULTURE &
CREATIVITY ALIVE IN SALISBURY!

SUMMER SEASON 2025

SALISBURY PLAYHOUSE

SALISBURY ARTS CENTRE

GET INVOLVED





Ticket Offers

Ticket Sales

Tickets are available through our website, and through our friendly Ticket Sales team. Opening hours are listed on our website.

Affordable Prices

Tickets from £12. Book early for the best seats at the best prices.

Discounts

- G** We offer discounts to group bookers and schools.
- S** Our Supporters receive thanking benefits.

Contact Ticket Sales for more information.

Scan me to sign up to our mailing list!



A very warm Welcome

Welcome to the summer season at Wiltshire Creative.

Drama will take centre stage starting with our major in-house production, *The Da Vinci Code*. Directed by award-winning director Chelsea Walker and co-produced with Mercury Theatre, Colchester, this gripping adaptation of Dan Brown's bestselling novel will keep audiences on the edge of their seats. The outstanding production values associated with Wiltshire Creative work will also be in evidence in our Stage '65 production of *The Jungle Book*. Bringing Rudyard Kipling's classic story to life in a new adaptation by Sonali Bhattacharyya, our acclaimed youth theatre will work with the in-house creative team to deliver a memorable theatrical experience.

This season also sees a welcome return from Original Theatre, last in Salisbury with *Birdsong*, bringing their new production of *The Croft* by Ali Milles to the Playhouse and also Le Navet Bete with their anarchic and hilarious version of *Treasure Island*. For young families, we're delighted to be offering Stuff and Nonsense with their high-octane retelling of *The Three Little Pigs*. And for the whole family, Musical Theatre Salisbury will be reviving the joyful Tony Award-winning musical, *Shrek*.

Much to look forward to and we hope to see you at a Wiltshire Creative event very soon.



Rosa Corbishley
Executive Director

Gareth Machin
Artistic Director

Wiltshire Creative is an arts and education charity that produces and presents fabulous entertainment, events and experiences in Salisbury and beyond!





THE DA VINCI

C O D E

ADAPTED BY RACHEL WAGSTAFF & DUNCAN ABEL

BASED ON THE NOVEL BY DAN BROWN



THE GIRL ON THE TRAIN 2023

Wiltshire Creative and Mercury Theatre,
Colchester present

The Da Vinci Code

Thursday 10 April – Saturday 3 May | 7:30pm
Thursday & Saturday matinees | 2:15pm

Tickets from £12

Ages 14+ | **S** **G**

STILL TO
COME THIS
SPRING



Dan Brown's bestselling thriller novel comes alive in a way you've never seen before, in this electrifying stage adaptation written by Rachel Wagstaff and Duncan Abel, the same writers who adapted the smash hit *The Girl on a Train* which played at Salisbury Playhouse in 2023.

Professor Robert Langdon and fellow cryptologist Sophie Neveu embark on a pulse-pounding quest across Europe. When a brutal murder in the Louvre Museum uncovers hidden clues within Leonardo da Vinci's masterpieces, the duo must unravel a web of intrigue that could alter the course of history...

Uncover the twists and turns of ancient secrets, relentless rivals and coded messages in a quest to protect a secret that could change the world forever.

Proudly sponsored by



Creatives

Writers: Rachel Wagstaff and Duncan Abel

Director: Chelsea Walker

Designer: Alys Whitehead

Composer & Sound Designer: Alexandra Faye Braithwaite

Lighting Designer: Ryan Day

Video Designer: Daniel Denton

Casting Director: Arthur Carrington



Accessible performances

29 April BSL Signed & Captioned

1 May Audio Described & Touch Tour



Original Theatre in association with
Wiltshire Creative present

The Croft

A play by Ali Milles

Friday 9 – Saturday 17 May | 7:30pm
Thursday and Saturday matinees | 2:15pm

Tickets from £12

Ages 14+ | 

Based on a true Highland story. In the remote Scottish Highlands, Laura and Suzanne arrive at a former Crofters Hut for a quiet weekend getaway, only to find themselves cut off from the modern world and drawn into the dark history of the Croft.

This bold, haunting play uncovers chilling secrets as the past and present collide. Starring Liza Goddard, directed by Alastair Whatley, and produced by Original Theatre (*Birdsong*, *Murder in the Dark*, *The Mirror Crack'd*), *The Croft* is set to get pulses racing this spring.



“A triumph
of suspenseful
writing”

British Theatre Guide

WILTSHIRE CREATIVE
ACADMY



Wiltshire Creative Academy presents

Welcome to Thebes

By Moira Buffini

Tuesday 13 – Wednesday 14 May | 7pm

Salisbury Playhouse, The Salberg

Tickets from £6

Ages 14+



In partnership with Wiltshire College and University Centre, our Wiltshire Creative Academy students present their final performance of the year.

Set in the present day but inspired by ancient myth, *Welcome to Thebes* explores the struggles of Eurydice, the first democratic president of a war-torn Thebes, who seeks peace without the support of Theseus,

the wealthy leader of Athens. As the threat of insurrection looms and a dictator's body remains unburied, the play passionately examines the clash between the world's richest and poorest nations in the aftermath of war.

This is an amateur performance by Wiltshire Creative Academy.

For the family



Le Navet Bete presents

Treasure Island

Thursday 27 – Saturday 29 March | 7:30pm
Saturday matinee | 2:15pm

Tickets from £15

Ages 8+ | **S**



Escape to Treasure Island with the multi-award-winning Le Navet Bete and their swashbuckling, smash-hit comedy for all the family!

Stuff and Nonsense Theatre presents

The Three Little Pigs



Friday 20 June | 4pm
Saturday 21 June | 11am & 2:30pm

Tickets from £16 (£12 for under 12s)

Ages 3+ | **S**

Get ready for a high-energy, puppet-filled retelling of this classic tale in a joyful, action-packed family show!



Musical Theatre Salisbury presents

Shrek the Musical

Monday 30 June – Saturday 5 July | 7:30pm
Saturday matinee | 2:30pm

Tickets from £12

Ages 4+ | **S**

Join Shrek, Donkey and Princess Fiona on a heartwarming journey full of quirky characters, humour and charm – fun for the whole family!



Opera della Luna presents

The Mikado

Tuesday 17 June | 2pm & 7pm

Tickets from £21

Ages 6+ | **S**

Opera della Luna returns to Salisbury with its most colourful and popular production ever: *The Mikado*. With costumes inspired by Versace and Jean Paul Gaultier, it promises a riot of gorgeous and bizarre creations and, of course, the company's inimitable brand of mad-cap humour!



“Delightful, Mischiefous and witty”

Financial Times



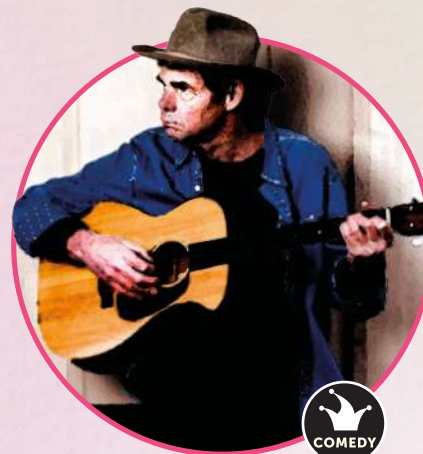
Off The Kerb Productions presents

Rich Hall: Chin Music

Tuesday 24 June | 7:30pm

Tickets from £20

Ages 14+



'Chin Music' has two meanings. One is idle talk. The other is a brushback throw in baseball or cricket to intimidate the batter. Both describe Rich Hall's comedy. Sharp, quick and sublimely improvisational. If you've never seen him, you need to grab a seat because he never disappoints. Ever.

Clive Conway Productions presents

An Audience with John Sergeant

Tuesday 8 July | 7:30pm

Tickets from £26 | **S**

John Sergeant is the former Chief Political Correspondent for the BBC and ITN Political Editor. Known for his successful career interviewing political figures like Thatcher, Major and Blair, he's also a popular TV personality. Recently, John has appeared on light entertainment shows like *Strictly Come Dancing* and presents documentaries, continuing to captivate audiences with his unique charm.



"Make no mistake, they are good, very good"

The Observer



Entertainers presents

Money for Nothing

Thursday 10 July | 7:30pm

Tickets from £20 | **S**

Europe's #1 Dire Straits show.

Money for Nothing is a tribute to Dire Straits like no other before – a show of the highest quality. Meticulous attention is paid to every detail, to faithfully recreate the distinct sound of Dire Straits in this unforgettable sonic spectacular.



Showstopper! The Improvised Musical

Wednesday 9 July | 7:30pm

Tickets from £16

Ages 12+ | **S**

Spontaneous musical comedy at its absolute finest – returning to Salisbury Playhouse!

With a critically acclaimed West End run and an Olivier Award to their name, the Showstoppers have delighted audiences across the globe with their



ingenious blend of comedy, musical theatre and spontaneity.

These incredible performers are guaranteed to impress as they create shows packed with drama, dazzling dance routines and catchy melodies – and it's all made up on the spot!



Entertainers presents

Country Roads

Friday 11 July | 7:30pm

Tickets from £20 | **S**

Come with us to the place you belong, for a night of the very best country classics!

Leave your 9 to 5 worries at the door and get ready as we celebrate the Kings and Queens of country music.

It's a night like no other – join us for a celebration of Country classics.

Avalon Promotions presents

Wiltshire Creative Comedy Club: Sara Barron

Saturday 12 July | 7:30pm

Tickets from £16

Ages 14+ | **S**

The popular Wiltshire Creative Comedy Club is back at Salisbury Playhouse this July. Don't miss an evening of laugh-out-loud comedy with some high-quality comedians.

Headlining this show is Sara Barron, one of the fastest-rising comedians of her generation. Since her 2018 debut at the Edinburgh Fringe, her shows have received rave reviews from publications including *The Times*, *The Guardian* and *The Independent*, and she was nominated for Best Newcomer at the Edinburgh Comedy Awards.



Wiltshire Creative and Dark Revolution present

Salisbury Craft Beer Festival

Friday 11 July | 6:30pm – 11pm

Saturday 12 July | 11am – 3:30pm

& 6:30pm – 11pm

Tickets from £15
(early-bird until 31 March)

Ages 18+

Get ready for an epic summer experience! Wiltshire Creative and Dark Revolution are teaming up for a Craft Beer Festival at the beautiful Salisbury Arts Centre.

With over 30 craft beers, ales and ciders from top UK breweries like Dark Revolution, Verdant, Deya, Beak



and more, you'll be in for a treat. Enjoy outdoor seating, delicious food vendors and live music all day long. Whether you're a beer lover or just after a fun day out, there's something for everyone. Grab your friends and join us for an unforgettable day in the sun.

Creatives

Director: Clare Threadgold
Designer: Daniel Gent
Costume Designer: Teri Buxton
Lighting Designer: Emily Williamson
Sound Designer: Michael Scott
Choreographer: Jacinta Landon
Musical Director: Teddy Clements
Composer: Stephanie Amies
Production Manager: Thomas J. Quine

STAGE 65
YOUTH THEATRE



Stage 65 Youth Theatre presents

The Jungle Book

By Sonali Bhattacharyya

Wednesday 23 – Saturday 26 July | 7pm
Saturday matinee | 2pm

Tickets from £12

Experience the wonder of the wild in the heart of a magical jungle, where vibrant colours bloom and even the smallest seedlings thrive. Run with animals, join new tribes and dance under a disco ball as the familiar story of tiger and child transforms into a fresh adventure.

Join us as young people aged 6 to 21 show us how to thrive in the wilds of life – growing up and discovering where we belong. Explore a deep connection among all creatures, fostering a community bound by the shared journey of growing up together, just as Stage 65 has been doing for 60 years.

Theatre Green Book

we're making theatre sustainable

STAGE 65 ALUMNI?
SCAN FOR UPDATES!



Generously supported by
Jack Stone

THE JUNGLE BOOK

PRESENTED BY
STAGE 65 YOUTH THEATRE,
CELEBRATING 60 YEARS

BY SONALI BHATTACHARYYA

Coming up at Salisbury Arts Centre



Jaz Delorean
Thursday 20 March | 7:30pm
Tickets from £19
Ages 15+



Lucy Porter: No Regrets
Saturday 22 March | 7:30pm
Tickets from £20
Ages 16+



**The Music of Prince:
New Purple Celebration**
Thursday 27 March | 7:30 pm
Tickets from £24
Ages 14+



Fleetwood Bac
Thursday 3 April | 7:30 pm
Tickets from £27
Suitable for all



WiFi Wars
Friday 4 April | 7pm
Tickets from £18
(under 18s from £14)
Ages 12+



Zoe Lyons: Werewolf
Saturday 5 April | 7:30pm
Tickets from £19
Ages 14+



Band Night
Friday 11 April | 7pm
Tickets from £5
Ages 14+



All Floyd
Friday 9 May | 7:30pm
Tickets from £24
Suitable for all



SCAN FOR THE FULL LINE-UP

A GIANT PANTO FOR 2025 ...Oh yes it is!

JACK AND THE BEANSTALK

29 Nov 2025 - 11 Jan 2026

Tickets from £18

Book now at wiltshirecreative.co.uk

Generously sponsored by



HOWDEN

**SALISBURY
PLAYHOUSE**
PART OF WILTSHIRE CREATIVE

Dance Six-0

Wednesdays | 10:15am | 12pm | 1:30pm

Salisbury Arts Centre, White Room

£54 per term

Come along to friendly and fun open classes on Wednesdays, which attract people approaching 60 and over, with diverse levels of movement. We invite you to embrace the joy of life through dance and movement.



Friday Under 5s

Fridays | 10:30am

Salisbury Playhouse

From FREE to £5

Ages 2 – 5

Join us every Friday during term time for a fun workshop exploring different creative activities each week, including dance, art and yoga. These sessions are designed for under 5s and their grown-ups to enjoy together!

Mind the Gap

Fortnightly on Fridays | 10:30am

Salisbury Playhouse

Tickets from £5

Mind the Gap is an opportunity for older people to meet and explore the creative arts in safe surroundings. The group meets fortnightly for coffee, conversation and creativity!

Art forms vary weekly. Details of activities will be announced on our website ahead of each term.



Take Part

Home Education Workshop

Friday 2 May | 1:30pm

Salisbury Playhouse | £5 per child

Ages 7 – 14

Join Wiltshire Creative for an afternoon of activities specially designed for home-educated children. In this session South-West based rap artist Isaiah Dreads gives an introduction to writing and performing your own poem or rap. All resources provided and no experience required!



Get Creative – Make Music!

Monday 7 April | 10:15am | 1:30pm

Salisbury Playhouse, The Salberg

£7 per child

Ages 7 – 11

An engaging and fun music-making workshop for children age 7 – 11 (school years 3 – 6) in partnership with Salisbury Area Young Musicians. No experience necessary.



Backstage Tour

Saturday 26 April | 11am

Salisbury Playhouse

Tickets from £10

Step behind the scenes and find out how we make our celebrated productions. Visit our website for more details.

Young People

Free Rehearsal Space

Wednesday 9 & Thursday 10 April,
Thursday 29 May | 10am & 1:30pm

Salisbury Playhouse & Salisbury Arts
Centre

FREE | Ages 14 – 25

Wiltshire Creative are offering young people a free rehearsal space, whether they are an individual, a band or a group of friends wishing to have some fun together! The space is available in three-hour slots and includes microphones.



WILTSHIRE CREATIVE ACADEMY

In partnership with Wiltshire College and University Centre, we deliver full time Further Education diplomas at Levels 1 – 3 in Performing and Production Arts. Accredited by University of the Arts London, this qualification is for students over 16 who want to develop their skills in a professional arts environment.

SCAN TO FIND OUT MORE



Beginners Please!

Did you know your primary school can perform at Salisbury Playhouse in the summer?

Beginners Please! is our flagship primary school performing arts project for Key Stages 1 and 2. Participants gain an insight into the world of professional arts through workshops, visits and creative performance opportunities.

Email takepart@wiltshirecreative.co.uk to find out more!

STAGE 65 YOUTH THEATRE

Tuesdays & Wednesdays
after school

Salisbury Playhouse

£75 per term

Ages 6 – 21

Explore storytelling through drama techniques, performance skills and games, helping members to grow in confidence, build new friendships and feel safe to be themselves. Young people have the chance to collaborate with artists and take part in unique performance opportunities. All are welcome to our weekly sessions. We can support young people from all backgrounds, those with additional needs, and provide financial assistance.



Young Ambassadors

Monthly on Mondays | 4:15pm – 6pm

Salisbury Playhouse | FREE | Ages 14 – 25

An exciting opportunity to inform the work Wiltshire Creative does with young people. Create events and opportunities, advocate for the voices of young people in the local community and champion the work of the organisation. Being a Young Ambassador is a great way to develop and demonstrate professional skills, supporting future career opportunities.



Booking Information

Book online at
wiltshirecreative.co.uk

Book in person at Salisbury Playhouse
Opening hours are listed on our website

Book by phone on 01722 320 333

Booking fees

Ticket prices shown are inclusive of a booking fee that goes towards the cost of operating and maintaining Wiltshire Creative. The fee does not apply to selected productions.

S Supporter benefits
Supporters receive thanking benefits on these events. Speak to Ticket Sales for more information.

Ticket exchanges
We offer ticket protection and an exchange policy. See our website for full details.

Accessible seating
Accessible seating is available for all performances. Please contact our Ticket Sales team for more information.

AD Audio described performances

TT Touch Tours

BSL BSL interpreted performances

CAP Captioned performances

W Wheelchair access

RP Relaxed and Dementia Friendly performances

WELCOMING TO ALL

At Salisbury Playhouse and Salisbury Arts Centre, and where we present work, we aim to make your visit as enjoyable and comfortable as possible. Where we can, we provide specific accessible performances: these are listed on show pages.



play your part...



BE A SUPPORTER*

"the role is yours
sweetie darling"

NO WAND REQUIRED



DONATE TODAY!



Make a regular donation of **£40 or more a year** to ensure that culture and creativity in Salisbury continue to thrive!

SALISBURY PLAYHOUSE **SALISBURY INTERNATIONAL ARTS FESTIVAL** **SALISBURY ARTS CENTRE**

Wiltshire Creative is a Registered Arts Charity 249169

Venue Hire at Salisbury Arts Centre

Hold your next event at the beautiful Salisbury Arts Centre in central Salisbury – a unique and accessible place for your personal celebration or corporate event!

Our main space is perfect for weddings, conferences and parties, with access to stunning historic grounds for outdoor mingling and catering. We also have multiple other spaces for workshops, crafting, classes, meetings or talks. By hiring our spaces for your event, you are supporting our work as a local arts and education charity in your community.



**Book your
Christmas
Party
with us!**



Salisbury Playhouse Café

Our warm and friendly foyer space is open from 10am to 4pm, Monday to Saturday. You can enjoy offers on tea or filter coffee & cake with one free drinks refill available during opening hours, excluding matinee show days. We also offer free WiFi, are a designated Safe Space and are proud to provide a supportive hub for the Salisbury community. Come and explore our free children's activities and dress-up box in our Coffee Lounge!



Meet the Team

Board of Trustees

Doric Bossom (Chair), Helen Birchenough, Dave Chapell, Tom Clay, Mikol Curteis, Mat Freer, Vicky Hickey, Nick Humby, Nicky Jenkins, Rosemary Macdonald, Roisin McCay-Hines, Birthe Mester, Eleanor Wills

Executive

Artistic Director
Gareth Machin
Executive Director
Rosa Corbishley

Communications & Sales

Director of Audiences
Sara Lock
Communications & Sales Manager
Claire Cavaye
Systems & Sales Officer
Jamie Allen
Marketing Officer
Aneta Drapelova
Communications & Sales Assistant
Katie Ereira
Ticket Sales Manager
Rosanna Tait
Ticket Sales Officer
Lynnette Barnes
Ticket Sales Assistants
Freya Ashley, Stef Cutrona, Melanie Hulland & Bella Timmins
Casual Ticket Sales and Foyer Assistant
Rosie Fielder & Kaysha Sinclair

Development

Development & Fundraising Director
Helen Taylor
Development & Fundraising Manager
Justine Holmes

Finance

Finance Director
Simon Coleman
Finance Manager
Caroline Corkill
Finance & IT Assistants
Emma Corkill & Jan Rose

Production

Production & Technical Director
John Titcombe
Technical Manager
Barney Meats
Deputy Technical Manager
Michael Scott
Senior Technician (Lighting)
Jonathan Cox
Senior Technician
Emily Williamson
Technician
Archie Ross
Company Stage Manager
Jenny Hunter
Head of Workshop
Tim Reed
Deputy Head of Workshop
Daniel Gent
Scenic Maker
Evie Watson
Head of Wardrobe
Teri Buxton
Deputy Head of Wardrobe
Emily Barratt
Production Administrator
Niki Ewen-Benns

Take Part

Take Part Director
Sarah Gregson
Take Part Manager
Gjenya Cambray
Take Part Producer
Jenny Cooper-Graham (maternity leave)
Take Part Producer
Georgia Norbury (maternity cover)
Education Officer
Laura Jasper
Wiltshire Creative Academy Course Leader
Tom Sherman
Wiltshire Creative Academy Production Tutor
Sarah Bath
Wiltshire Creative Academy Tutors
Jessie Clarke & Francesca Myles
Youth Theatre Leader
Clare Threadgold
Take Part Assistant
Ann-Marie Smith

Operations

Operations Director
Jo Wood
Operations Manager
Charlie Hall
Facilities Manager
Olivia Davey-Bond
Volunteer Manager
Kate Mayne
Catering & Foyer Manager
Abi Davis
Bars Manager
Steven Ketley
Front of House Manager
Cieran Smith
Duty Managers
Sharon Payne, Lou Sutterby & Hilary Thomas
Head Ushers
Freya Ashley, Rebecca Harwood-Lincoln, Fiona Nelder, Steve Pickard & Cara Toseland
Facilities Caretaker
John Burt
Cleaners
Justin Bennett, Mark Clark & Brenda Kerley

People & Resources

Head of People & Resources
Kirsten Vaughan
Administrator
Sophia Sample
People Administrator
Melissa Vincent

Programming

Senior Producer
Juliet Coveney
Producer
Alice Bezant
Festival Producer
Fiona Curtis
Programme Assistant
Hope Norman

**A big thank you
to our volunteers!**

Summer & Festival 2025

SPRING EVENTS

20 Mar	Jaz Delorean	MUSIC	16
22 Mar	Lucy Porter: No Regrets	COMEDY	16
27 Mar	The Music of Prince: New Purple Celebration	MUSIC	16
27 – 29 Mar	Treasure Island	THEATRE	8
3 Apr	Fleetwood Bac	MUSIC	16
4 Apr	WiFi Wars	COMEDY	16
5 Apr	Zoe Lyons: Werewolf	COMEDY	16
7 Apr	Get Creative – Make Music!	FAMILY	19
9 – 10 Apr, 29 May	Free Rehearsal Space	MUSIC	20
10 Apr – 3 May	The Da Vinci Code	THEATRE	4 – 5
11 Apr	Band Night	MUSIC	16
26 Apr	Backstage Tour	THEATRE	19
2 May	Home Education Workshop	FAMILY	19
9 May	All Floyd	MUSIC	16
9 – 17 May	The Croft	THEATRE	6
13 – 14 May	Welcome to Thebes	THEATRE	7
24 May	Evensong	MUSIC	3
24 – 26 May	Unity	CIRCUS	4
24 May – 1 Jun	FLIGHT	THEATRE	5
24 May – 8 Jun	Becoming River	MUSIC	23
28 May	A Beautiful Thread: Thomas Hardy in Words and Music	MUSIC	6 – 7
29 May	Songs of the Bulbul	DANCE	8
29 May	An Audience with Polly Toynbee	SPOKEN WORD	9
29 May	Eleanor Tiernan and Chloe Petts: Work in Progress	COMEDY	9
30 May	Shoulder to Shoulder	OPERA	10
30 May	Obscure Desires	CIRCUS	11
30 May	Minnie Stynker	FAMILY	11
30 May	Sounding River Sound Walk	COMMUNITY	23
30 May	Illustration Workshop with Francesca McLean	ART	23
31 May	An Evening with Jacqui Dankworth: In Concert	MUSIC	12

FESTIVAL EVENTS

FESTIVAL EVENTS

31 May	An Audience with Joanne Harris	SPOKEN WORD	12
31 May	Family Fiesta	FAMILY	13
31 May	The Salmon's Leap	MUSIC	13
31 May, 7 Jun	The Art of Salisbury River Park: Guided Walks	COMMUNITY	23
4 Jun	Ballet Central 2025 (& Drawing Workshop)	DANCE	13
4 Jun	Eagles, Birdsongs and Bach	MUSIC	14
5 Jun	Light and Dark: Bourne Hill Gardens and the Greencroft	COMMUNITY	15
5 Jun	Rory Cellan-Jones	SPOKEN WORD	15
5 Jun	Josh Widdicombe: Work in Progress	COMEDY	16
5 Jun	Play On Words	MUSIC	16
6 Jun	GEORGE Eliot in Words and Music	MUSIC	17
6 Jun	The Mistake	THEATRE	18
6 Jun	Wiltshire College Showcase	MUSIC	18
6 – 7 Jun	Twelfth Night	THEATRE	20
7 Jun	Hejira: Celebrating Joni Mitchell	MUSIC	19
7 Jun	With The Who	MUSIC	20
8 Jun	Out of the Box	FAMILY	21
17 Jun	The Mikado	OPERA	9
20 – 21 Jun	The Three Little Pigs	FAMILY	8
24 Jun	Rich Hall: Chin Music	COMEDY	9
30 Jun – 5 Jul	Shrek the Musical	THEATRE	8
8 Jul	An Audience with John Sergeant	SPOKEN WORD	10
9 Jul	Showstopper!	THEATRE	11
10 Jul	Money for Nothing	MUSIC	10
11 Jul	Country Roads	MUSIC	12
11 – 12 Jul	Salisbury Craft Beer Festival	COMMUNITY	13
12 Jul	Wiltshire Creative Comedy Club: Sara Barron	COMEDY	12
23 – 26 Jul	The Jungle Book	THEATRE	14 – 15
29 Nov 25 – 11 Jan 26	Jack and the Beanstalk	PANTOMIME	17

SUMMER EVENTS

Other events across

Playhenge

23 May – 2 June | 10:30am – 5pm

Stonehenge

Included in the price of a Stonehenge ticket

Ages 4+ | children to be accompanied by

an adult

This May half-term, Stonehenge becomes a construction site! Join English Heritage and Woodland Tribe to build Playhenge – a hands-on adventure playground where kids can craft their own creations. Don't miss this fun, creative twist on history!



Within

17 May – 14 June

Fisherton Mill

FREE entry

Within, an exhibition by Louise Bounourd, explores nature and landscape through water-based media and oil paint, blending abstraction with emotion.

Interchange

23 May – 20 September

Mon – Fri | 10am – 5pm

Gallery 2, Salisbury Library

FREE

An exhibition of vibrant screenprints by the artist Julia Atkinson from the Young Gallery's permanent collection.



Salisbury International Arts Festival

24 May – 8 June 2025

the city

visit venue websites for more information

Elisabeth Frink: A View from Within

24 May – 28 September

Salisbury Museum

Tickets from £6

Explore Dame Elisabeth Frink's life and art at her Dorset home, celebrating her legacy and creative freedom.

Supported by Arts Council England NPO scheme through the Wessex Museums Partnership.

Salisbury Hospital Open Day

Saturday 7 June | 10am – 3pm

Salisbury Hospital

FREE

A drop-in open day to explore the hospital, meet staff, discover technology and enjoy creative health activities.

Creative Workshops at Fisherton Mill

Needle Felting Workshop

Saturday 31 May | 10am – 4:30pm

£70

Create a hare, fox or badger with fibre artist Carla Taylor.

Learn relief carving and printmaking with artist Tamsin Loveday.

Suitable for beginners and beyond

Living Water

7 June – 28 September

Salisbury Cathedral

Included with general admission to Salisbury Cathedral

Experience *Living Water* this summer, showcasing diverse artworks exploring water's power and connection through installations sculptures and paintings.

Folk Festival

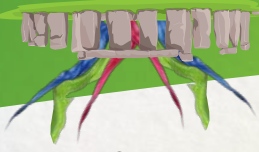
Saturday 7 June | 11am – 11pm

The Rifles Berkshire & Wiltshire Museum

Tickets from £6

Enjoy a day of folk music, food, drink and artisan stalls in Salisbury Cathedral Close's 'Wardrobe'

Book at thewardrobe.org.uk



WILTSHIRECREATIVE.CO.UK | TICKETS: 01722 320 333

Thank You

PUBLIC FUNDERS



SPONSORS & PARTNERS

Sponsor of Spring Season 2025



Celebrating the Art of Salisbury River Park

Sounding River

Friday 30 May | 11am & 2pm

FREE

Saturday 24 May – Sunday 8 June

A collection of eight pieces of music by Karen Wilmhurst to celebrate Salisbury River Park. Download the free Echoes app and follow the geo-located sound walk.



Join musician Emma Welton and composer Karen Wilmhurst for a short, slow walk through Salisbury River Park, exploring its diverse sonic environments. Maximum capacity 12 per walk

FREE to book | Ages 12+

The Art of

Salisbury River Park: Guided Walks

Saturday 31 May & Saturday 7 June
9.30am & 11.30am

FREE

FREE to book | Ages 12+

Join artist Sue Martin on guided walks through Salisbury River Park to explore murals, sculptures and soundscapes and learn about what inspired the artists. Maximum capacity 12 per walk

Drop-in Illustration Workshop

Friday 30 May | 10am – 2pm

Salisbury Playhouse

Join River Park illustrator Francesca McLean for a drop-in botanical illustration workshop. Suitable for all ages, all materials provided and no experience needed.

PRODUCERS – Gifts of £180+

Sue Bourne, Graham & Diana Castle, David & Rosemary Chapell, John & Rosemary Cox, Rowland Davies, Sue Goddard, Gordon & Kay Griffiths, Jennifer Hoare, Robert Macnaughtan, Norman & Jane Martin, Christine Mason, Lloyd Webber Foundation, The Gunter Charitable Trust, The J P Marland Charitable Trust, The Verdon-Smith Family Charitable Trust, Walter Guinness Charitable Trust, The Verdon-Smith Charitable Trust, The Verdon-Smith Charitable Trust, The Verdon-Smith Charitable Trust, Mark & Nicola Doman & Jordina Evins, Andrew Crow, John & Jane Devereil, Andrew Butler, Tim Crarer, Michael & Barbara Michael & Hilary Bird, Mrs Marjoleine Avey Jones, Anne Beckwith-Smith, Richard & Paddy Archer, John & Catherine Stone King Foundation, The Andrew Foundation, South Wills Menap, Noel Coward Foundation, RTR Foyle Foundation, Heritage Lottery Cultural Recovery Fund DCMS, A W Gale Charitable Trust,

COMMISSIONERS – Gifts of £500+

Mikolaj Curteis, Richard & Judy Haes, Peter & Brenda Hunt, Brigitte Potts, Elaine Roberts, Mikolaj Curteis, Richard & Judy Haes, Peter & Brenda Hunt, Brigitte Potts, Elaine Roberts, Richard & Paddy Archer, John & Catherine Stone King Foundation, The Andrew Foundation, South Wills Menap, Noel Coward Foundation, RTR Foyle Foundation, Heritage Lottery Cultural Recovery Fund DCMS, A W Gale Charitable Trust,

BENEFACTORS – Gifts of £250+

Chris Maguire, Simon McCerny & Jeremy Davies, Mike Moody & Birthe Mester, Lady Newbaggling, Valerie Oldrey, Steve Pickard, Jane Podkolinski, Andrew Rhind-Tutt, Susan Rolter, Brian & Angela Sutton, Colin & Sue Taylor, Charles & Françoise Tongue, William & Diana Verdon-Smith, Jonny & Charlotte White, Nigel & Wendy Wingate Jenny Taylor, Jim Douglas, Paul & Sue Tom & Rosie Clay, Prof Dick Clements & Roy Carter & Dame Elizabeth Neville, Doris & Sara Bossom, Stuart Cannel, Jane Barker, Helen & Simon Birchrough,

LEGACIES & IN MEMORIAM GIFTS

The Late Mrs Brenda Ashenden, The Late Mrs Elizabeth Batten, The Late Mrs Joan Doreen Boys, The Late Ms Audrey Catford, The Late William Ellaby, The Late Mr John English, The Late Miss Victoria Grayson, Mr Richard Griffin, The Late Mrs Anne Mr Richard Griffin, The Late Mrs Anne Hatcher, The Late Ms Audrey Herron, The Late Keith Miller, The Late Lucy Frances Norbury, The Late Mrs Eileen Pinniger, The Late Mr David Quayle

To our donors who wish to remain anonymous

TRUSTS & FOUNDATIONS

A W Gale Charitable Trust, Cultural Recovery Fund DCMS, Foyle Foundation, Heritage Lottery Fund, Noel Coward Foundation, RTR Foundation, South Wills Menap, Stone King Foundation, The Andrew Foundation, The Gunter Charitable Trust, The J P Marland Charitable Trust, The Verdon-Smith Family Charitable Trust, Walter Guinness Charitable Trust, The Verdon-Smith Charitable Trust, The Verdon-Smith Charitable Trust, Mark & Nicola Doman & Jordina Evins, Andrew Crow, John & Jane Devereil, Andrew Butler, Tim Crarer, Michael & Barbara Michael & Hilary Bird, Mrs Marjoleine Avey Jones, Anne Beckwith-Smith, Richard & Paddy Archer, John & Catherine Stone King Foundation, The Andrew Foundation, South Wills Menap, Noel Coward Foundation, RTR Foyle Foundation, Heritage Lottery Cultural Recovery Fund DCMS, A W Gale Charitable Trust,

INVESTORS – Gifts of £1000+

Wiltshire Music Connect, Wiltshire Council Recovery Fund, Wiltshire Community Foundation, Charitable Trust, Wiltshire Area Board, Family Charitable Trust, Walter Guinness Charitable Trust, The Verdon-Smith Charitable Trust, The J P Marland Charitable Trust, The Gunter Charitable Trust, The Verdon-Smith Charitable Trust, Mark & Nicola Doman & Jordina Evins, Andrew Crow, John & Jane Devereil, Andrew Butler, Tim Crarer, Michael & Barbara Michael & Hilary Bird, Mrs Marjoleine Avey Jones, Anne Beckwith-Smith, Richard & Paddy Archer, John & Catherine Stone King Foundation, The Andrew Foundation, South Wills Menap, Noel Coward Foundation, RTR Foyle Foundation, Heritage Lottery Cultural Recovery Fund DCMS, A W Gale Charitable Trust,

Jane Barker, Helen & Simon Birchrough, Doris & Sara Bossom, Stuart Cannel, Roy Carter & Dame Elizabeth Neville, Tom & Rosie Clay, Prof Dick Clements & Jenny Taylor, Jim Douglas, Paul & Sue Hallden, Fraser & Rosemary Macdonald, Anne Marlow, Chris & Clem Martin, Alison Payne, Paul & Joanna Pearson, Jo Seaton, Jack Stone, Michael Wade, Christopher & Frances Wain, Janet Watford

Salisbury International Arts Festival

24 May – 8 June 2025

WILTSHIRECREATIVE.CO.UK | TICKETS: 01722 320 333

Twelfth Night

The Lord Chamberlain's Men presents

Friday 6 June | 7pm

Saturday 7 June | 2pm & 7pm

Rack Close, SP1 2ES

Tickets from £24 | **S**

Join The Lord Chamberlain's Men this summer for Shakespeare's greatest romantic comedy, *Twelfth Night*, celebrating their 21st year. They present this joyous play as he first saw it – in the open air, with an all-male cast, Elizabethan costumes, music and dance.

"If music be the food of love, play on!"

Bring a chair and a picnic for an unforgettable experience. Cold drinks and ice creams will be available for purchase.

Generously sponsored by



"The best authentic Shakespearean experience"

Yorkshire Post



Who's Next:

Saturday 7 June | 7:30pm

Salisbury Arts Centre

Tickets from £18 | **S**

Following last year's celebration of The Rolling Stones' 1964 Salisbury City Hall appearance, Wiltshire Creative and Salisbury History Festival present *With The Who*.

In 1965, The Who performed to an ecstatic crowd in Salisbury, and now you can enjoy a tribute by the premier live band *Who's Next*. Frog Moody will also present Part 2 of his popular *Whistle-Stop Tour*, exploring the 1960s music scene in Salisbury.



Salisbury International Arts Festival

24 May - 8 June 2025

20

Out of the Box

Sunday 8 June | 11am & 2pm

Rack Close, SP1 2ES

Tickets from £12 for adults & £10 for children | **S**

Bring a picnic and a chair for a fun day out!

This family-friendly outdoor comedy is full of surprises as an unlikely character and his mysterious box lead you on a whirlwind of fun! With trick shots, mini performances and hilarious moments, everyone joins the adventure.



Darryl J Carrington's non-verbal clowning turns everyday objects into the extraordinary, celebrating the joy of play for all ages and bringing generations together through skilful silliness.

Bring a picnic and a chair for a fun day out!

This family-friendly outdoor comedy is full of surprises as an unlikely character and his mysterious box lead you on a whirlwind of fun! With trick shots, mini performances and hilarious moments, everyone joins the adventure.

Cold drinks and ice creams will be available for purchase.



WILTSHIRECREATIVE.CO.UK | TICKETS: 01722 320 333

21

The Mistake

Friday 6 June | 7:45pm

Salisbury Playhouse, The Salberg

Tickets from £16

Ages 14+ | **S**

When the atomic bomb is approved for use on Japan, Leo Szilard, tormented by his role in its creation, strives to prevent the catastrophe. Meanwhile, Shigeo Nomura, a young woman in Hiroshima, survives the bombing and fights to rescue her parents.

Stories of a Hungarian scientist, an American pilot, and a devoted Japanese daughter in this moving drama about the 'mistake' that launched the nuclear age.

Two actors, one British and one Japanese, portray the gripping



Wiltshire College Music Showcase

Friday 6 June | 7pm

Salisbury Arts Centre

Tickets from £5

Ages 12+ | **S**

Wiltshire College and University Centre Salisbury presents a showcase of emerging talent from the Music Performance and Production Diploma course, featuring a variety of genres including indie-rock, folk, rap and electronic. Expect surprises and special guests, as the event marks the end of the students' graduating academic year.

Also join our Band Night (page 16, summer season) in April to celebrate more of the best young artists in the south.

Hejira: Celebrating Joni Mitchell

Saturday 7 June | 7:30pm

Salisbury Playhouse, Main House

Tickets from £18

Ages 14+ (under 16s to be

S |

accompanied by an adult)

Hejira is a 7-piece band celebrating Joni Mitchell's masterpieces, mostly from the late '70s. Fronted by the talented Hattie Whitehead, who channels Joni's vocal poise

and guitar style, the band performs iconic songs like 'Amelia', 'Woodstock', 'Hejira', and 'A Case of You', offering an unforgettable tribute to Mitchell's legacy.



Off The Kerb Productions presents

Josh Widdicombe: Work in Progress

Thursday 5 June | 7:30pm

Salisbury Playhouse, Main House

Tickets from £22

Ages 14+

Join Josh Widdicombe as he warms up ahead of his brand-new nationwide tour later this year.



SOLD OUT

Play On Words

Thursday 5 June | 7:30pm

Salisbury Arts Centre

Tickets from £23

Ages 8+ | 5



P.G. Wodehouse once had five musicals on Broadway simultaneously. Today, his step-great grandson Hal Cazale, with pianist Simon Beck, transports us back to the Golden Age of stage and screen through stories and song. Celebrate the birth of the American musical with highlights from Gershwin, Kern, Rodgers & Hammerstein, Noël Coward, Sondheim and more.

GEORGE ELIOT in Words and Music

Hamblets and Orchestra of the Swan
in association with Wiltshire Creative
present

Friday 6 June | 7:30pm

Salisbury Playhouse, Main House

Tickets from £16

Ages 12+ | 5

After their sell-out *Red*

Sky at Sunrise last spring,

Swan return to bring 19th century

Hamblets and Orchestra of the

writer George Eliot to bold and

dramatic life.

This female-led show tells George

Eliot's story through her great

novels, letters, journals, poetry, and

journalism. Performed by acclaimed

singer-songwriter SuRie and Orchestra

of the Swan alongside a guest

leading actress.



Generously supported by a private donor

Orchestra of the Swan will also be

bringing the world of Thomas Hardy to

life at Stonehenge on 28 May. (page 6)



La Folia presents

Eagles, Birdsongs and Bach

Wednesday 4 June | 7:30pm

St Thomas' Church

Tickets from £26 | **S**

Alongside the music of Bach and Vivaldi, this concert presents music from La Folia's *Birdsongs* project and the world premiere of Howard Moody's *Eagle Concerto* performed by international virtuoso recorder player Piers Adams. Designed and built by the late Adriana Breukink, the 'Eagle' recorder has created new possibilities for the instrument, allowing it to soar away from its baroque roots.

Ever since first hearing Piers play the 'Eagle', Howard Moody has dreamt of writing a concerto for it, combining Bach's orchestral line up of trumpets, drums, oboes, harpsichord and strings with the more modern sound-worlds of saxophone and percussion.



Light and Dark: Bourne Hill Gardens and the Greencroft

A Guided Walk with Froggy Moody and Neil Beagrie

Thursday 5 June | 7:30pm

Bourne Hill

Tickets from £10

This walk will cover the fascinating Saxon, Medieval, Georgian and Post-Modern landscape of the often-overlooked corner of Bourne Hill. The walk will also delve into the plague and the dark history of the Greencroft.

The walk will start in front of Bourne Hill (outside the main entrance into the registry office) and progress to the Greencroft.

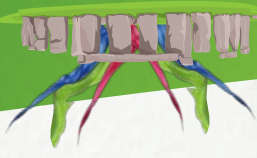
Rory Cellan-Jones

Thursday 5 June | 7:45pm

Salisbury Playhouse, The Salberg

Tickets from £16 | **S**

Join former BBC journalist Rory Cellan-Jones in conversation with Matthew Stadlen about his latest book, *Sophie from Romania*. This heartwarming story chronicles Rory's journey adopting a shy Romanian rescue dog, Sophie, and how their bond helped him navigate his Parkinson's diagnosis.



An Evening with Jacqui Dankworth: In Concert

Saturday 31 May | 7:30pm

Salisbury Playhouse, Main House

Tickets from £20 | **S**

Established as one of the country's leading vocalists, Jacqui Dankworth's live concerts showcase her mastery of genres, drawing on jazz, folk, soul and blues. Audiences will be treated to a collection of songs drawn from her highly praised studio albums, alongside tracks that have inspired her incredible career.

"One of our finest singers, regardless of category"

The Sunday Times



An Audience with Joanne Harris

Saturday 31 May | 7:45pm

Salisbury Playhouse, The Salberg

Tickets from £16 | **S**

Join Joanne Harris (OBE, FRSL) as she discusses her new novel *Vianne*, a prequel to *Chocolat*. Joanne is the author of twenty novels, three cookbooks and many short stories. A Fellow of the Royal Society of Literature, she was awarded an OBE in 2022. Joanne will be joined in conversation by broadcaster Matthew Staden.



Family Fiesta

Saturday 31 May | 12pm – 4pm

Salisbury Arts Centre

FREE

Join us for a fabulous Family Fiesta celebrating Salisbury Arts Centre's 50th birthday, with an array of free activities for all ages. You can expect craft, workshops, live music, food vendors and ice cream, so bring the whole family along to join the party!



Ballet Central 2025

The Central School of Ballet presents

Wednesday 4 June | 7:30pm

Salisbury Playhouse, Main House

Tickets from £19 | **S**

Ballet Central returns to the Festival in 2025 with a fresh program of classical ballet and contemporary dance. Highlights include Frederick Ashton's *Foyer de Danse*, staged for the first time in 90 years and Hop dancer Dickson Mbi and acclaimed duo Thick and Tight. Closing the show will be Kristen McNally's modern ballet.



Generously supported by Christopher and Frances Wain



WILTSHIRECREATIVE.CO.UK | TICKETS: 01722 320 333

Drawing Workshop
3.30pm | Tickets from £9
Bring your creative flair to some self-led drawing! The auditorium will be in darkness while the dancers rehearse, and ticket holders are invited to come along to draw them.

How do you beat loneliness? How do you learn to laugh again? Swansea City Opera collected stories from members of the UK charity Men's Shed who have experienced life's adversities and isolation to create a contemporary and uplifting opera that explores life's ups and downs. Sung beautifully, *Shoulder to Shoulder* features singers who've worked at

major opera houses, including the Royal Opera House and Glyndebourne. The company features soprano Jessica Robinson, a finalist in the BBC Cardiff Singer of the World in 2023. Wiltshire Creative are delighted that Local Men's Shed groups from Salisbury and Wilton will also play their part on stage.



Shoulder to

Swansea City Opera in association with Wiltshire Creative and Arts Council Wales present

Friday 30 May | 7:30pm

Salisbury Playhouse, Main House

Tickets from £16

Ages 12+ | S

Minky Stynker

Soap Soup Theatre presents

Friday 30 May | 11am & 2pm

Salisbury Playhouse, The Salberg

Tickets from £12 for adults or £10 for children

Ages 5 - 8 | S

What would you do if you moved to a strange city? Your friends are far away, your new house smells weird and it rains all the time? Kit's adventure begins when his drawings come to life, leading to a wild and colourful journey! Join Soap Soup Theatre for a riotous tale where bedrooms turn into forests, schools become solar systems and drawings take on a life of their own.

"A fun and playful world full of drawing and imagination"

Backstage Bristol



Obscure Desires

Many Hands Circus presents

Friday 30 May | 7:30pm

Salisbury Arts Centre

Tickets from £16 | S

Acrobatics company Many Hands Circus delves into the depths of human connection in a show that masterfully combines circus artistry and theatrical storytelling. *Obscure Desires* weaves together spectacular acrobatics and original live music to explore the landscape of human longing.



Songs of the Bulbul

Aakash Odedra Company in association with Manchester Camerata present

Thursday 29 May | 7:30pm

Salisbury Playhouse, Main House

Tickets from £23 | S

Birdsong is ephemeral – like dance, it exists only in the moment – sung once, then lost to time.

Songs of the Bulbul, a new solo dance work by Aakash Odedra, choreographed by Rani Khanam with music by Rushil Ranjan, is inspired by the Sufi myth of a bulbul bird in captivity. The nightingale's song symbolizes a spiritual seeker yearning for union with the divine. Combining Kathak's physicality with Sufism's spiritual journey, this performance explores the fleeting beauty of dance and an artist's life, rooted in the traditions of Sufi music, dance and poetry. Recognised by *The Guardian* as the Number 2 Best Dance of 2024.



“A song of beauty and life”
The Guardian



Salisbury International Arts Festival
24 May – 8 June 2025

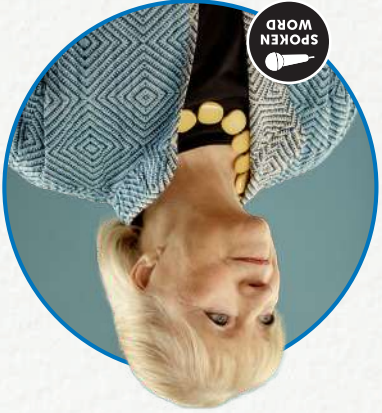
An Audience with Polly Toynee

Thursday 29 May | 7pm

Salisbury Playhouse, The Salberg

Tickets from £16 | S

Join Polly Toynee, *Guardian* columnist, former BBC social affairs editor and author, in conversation with broadcaster Matthew Stadlen. Her recent books include *An Uneasy Inheritance: My Family and Other Radicals* and *The Only Way Is Up: How to Take Britain from Austerity to Prosperity*, a post-election book co-authored with David Walker.



Thursday 29 May | 7:30pm

Salisbury Arts Centre

Tickets from £17

Ages 14+ | S

Eleanor Tierman has appeared on *Stand Up For Live Comedy* (BBC3), and as a panellist on BBC Radio 4's *News Quiz*. Known for her acerbic wit, her style is “deceptively sharp” (*Fest Mag*).
Chloe Petts, called “one of the most compelling young comics” by *The Guardian*, is a rising star. Her debut show *Transience* received rave reviews, with *The i* praising it as a “barnstormer of a Fringe debut.”



WILTSHIRECREATIVE.CO.UK | TICKETS: 01722 320 333



Hamblets and Wiltshire Creative in association
with English Heritage present

A Beautiful Thread: Thomas Hardy in Words and Music

Starring Anton Lesser, Lucia Bonbright and
Orchestra of the Swan

Wednesday 28 May | 8pm

Tickets from £40

Stonehenge

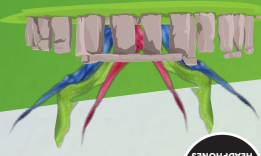
Ages 10+ | **S**

Join us for a unique event at an iconic site.

Performed in front of the Stone Circle, *A Beautiful Thread* weaves Hardy's life with his beautiful poetry and great novels.

Hardy put more music into his work than any other writer, and Orchestra of the Swan's Artistic Director, David Le Page, has devised a musical programme that combines West Gallery music with Holst, Warlock and contemporary folk, which the audience will be given headphones to enjoy. Adapted by Deirdre Shields, Hardy's writing shines bright as ever.

Anton Lesser and Lucia Bonbright bring a hugely varied cast to dazzling life: from Hardy and his mother, to George Bernard Shaw and Virginia Woolf, along with characters from his novels. The show also highlights Hardy's humour, his modernity, the time-span he lived through and his global reach, from Hollywood to Japan. Please bring a picnic blanket and a picnic to enjoy.



WILTSHIRECREATIVE.CO.UK | TICKETS: 01722 320 333

Let us do the
driving - special
£5 bus service
available



Salisbury International Arts Festival
24 May - 8 June 2025

Gorilla Circus in association with Wiltshire Creative present

UNITY

Saturday 24 May | 9:30pm
 Sunday 25 May | 4pm & 9:30pm
 Monday 26 May | 1pm

Salisbury Market Square
FREE

UNITY is a reflection on community, an act of protest, a call for change and a dream for the future. A large scale production that merges immersive theatre, circus and community stories in a powerful but intimate way. Local artist Louise Jordan has gathered reflections and responses from the local community that will be woven into the soundtrack of the performance. Salisbury Market Square will come alive night and day on this opening weekend to remember.

FREE - NO TICKET REQUIRED!



Generously sponsored by
PARKER BULLEN
 SOLICITORS

★★★★★

“Outstanding...takes you away from the busy streets...into a different reality”
 The Scotsman

FLIGHT

DARKFIELD presents

Saturday 24 May – Sunday 1 June
 Please see our website for times

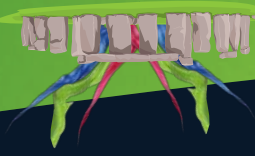
Guildhall Square

Tickets from £10 for adults or £8 for under 25s

Agas 14+ | S

FLIGHT takes place in total darkness inside a 40ft shipping container, resembling an Airbus 320 cabin. Think Escape Rooms meets Immersive Simulator. Bring a group to experience this exhilarating, once-in-a-lifetime show that is soon to be the talk of the city.

Over 30 minutes, it explores the Many-Worlds Interpretation of quantum mechanics, taking audiences through two worlds, two realities and two possible outcomes. There are many worlds where this plane lands safely.



A very warm

Welcome

Hello and a very warm welcome to the 2025

Salisbury International Arts Festival.

A Festival is an opportunity to let imaginations soar and this year we are definitely looking skyward with a programme full of creativity and originality. Join us in Market Square for Gorilla Circus' extraordinary

aerial show *UNITY*. This free event will see us gazing upwards as hair hanging artists, dance trapeze and high wire walkers travel overhead. Also in Guildhall Square and running throughout the Festival period, we are delighted to welcome Darkfield with their extraordinary immersive show *FLIGHT*. Seated inside a 40ft shipping container, the interior of which exactly resembles an Airbus 320, audiences embark on a thrilling adventure through two worlds, two realities and two possible outcomes to their journey.

Other outside work will include what promises to be a memorable trip to Stonehenge for *A Beautiful Thread*, a celebration of Thomas Hardy with Orchestra of the Swan and the actor Anton Lesser under the evening sky. Elsewhere, music will fly with Howard Moody's new composition in *Eagles, Birdsongs and Bach* performed by the world's most flamboyant recorder virtuoso, Piers Adams, and musicians from La Folia at St Thomas' Church.

St Thomas' also features in another important strand of the Festival programme, the 50th anniversary of the founding of Salisbury Arts Centre and the migration of the St Edmund's congregation to their new home at St Thomas'. The Festival will begin with a very special *Evensong* at the Arts Centre led by the Rev'd Canon Kelvin Inglis, followed by a procession back to St Thomas'. Later on in the Festival we will also be celebrating the importance of the Arts Centre for young people with a *Family Fiesta* and showcase of young local bands.

Alongside these key events we are delighted to be able to offer a wide range of outstanding dance including the award-winning Aakash Odedra Company, opera from Swansea City Opera and theatre with a welcome return from The Lord Chamberlain's Men this year, producing *Twelfth Night* in the idyllic Rack Close. So much to look forward to and we look forward to seeing you at the Festival.

Rosa Corbishley
Executive Director

Gareth Machin
Artistic Director

Front cover image by Kin Ho. Anton Lesser and David Le Page for *A Beautiful Thread*: Thomas Hardy in Words and Music



Salisbury International Arts Festival

24 May - 8 June 2025

2

Evensong

Saturday 24 May | 5pm

Salisbury Arts Centre

Free to book

Evensong has for generations provided a daily form of prayer, and a rich repertoire of music has developed to enhance the beauty of this well-loved act of worship, often now delivered with a homily, hymns and prayers. This service, led by those who keep the tradition and observance alive at the parish church of St Thomas;

After the service, the choir will make their way to St Thomas' Church and all ticket holders are welcome to join them there for refreshments.



WILTSHIRECREATIVE.CO.UK | TICKETS: 01722 320 333

3

SALISBURY INTERNATIONAL ARTS FESTIVAL 2025



BROUGHT TO YOU BY WILTSHIRE CREATIVE
24 MAY – 8 JUNE