

# WILTSHIRE CREATIVE

JAN – MAY  
2024



THEATRE | COMEDY | MUSIC | CABARET | WORKSHOPS

SALISBURY  
ARTS CENTRE

SALISBURY  
INTERNATIONAL  
ARTS FESTIVAL

SALISBURY  
PLAYHOUSE

# TICKET OFFERS



## Visit Us

Our friendly Ticket Sales team are at Salisbury Playhouse from 10am to 4pm, Mon to Sat. You can also enjoy tea or filter coffee with cake for just £3, with FREE refills, and we also offer FREE WiFi.

## Ticket Prices

Tickets start from **£13**, booking early means you can get the best seats at the best price.

## Group/School Discounts

We offer discounts to group bookers and schools. Please contact Ticket Sales on **01722 320 333**.

## Supporters

Look out for this symbol for events where we acknowledge our Supporters with a thanking benefit.

## Sign up to our Mailing List

Stay up to date and get information about new events, ticket offers and how you can support our charitable work.



**SCAN ME  
TO SIGN UP!**



## Hello and welcome to our Spring/Summer 2024 Season.

One of the most important responsibilities of a vibrant arts organisation is the commissioning and production of creative performances. Here at Wiltshire Creative, we are proud of the extraordinary range of new work across different art forms that we have been able to offer audiences over the past few years. In 2014, we launched our Original Drama programme at the Playhouse with Chris Chibnall's glorious comedy, *Worst Wedding Ever*. It is a huge delight, therefore, to welcome Chris back to Salisbury with the world première of his new riotous family farce, *One Last Push*.

Laughter is a big part of our season and few writers are able to land comedy with quite such dexterity as Alan Ayckbourn. Following the popular revival of *How the Other Half Loves* in 2023, we are delighted to be bringing another of Alan's great plays to the Playhouse stage – *A Chorus of Disapproval*. Following the travails of an amateur theatre company staging a production of *The Beggar's Opera*, this fantastic comedy drama is full of Ayckbourn's characteristic wit, social observation and theatrical verve.

These two major in-house productions sit alongside a packed season of visiting work on the Main Stage at the Playhouse and at Salisbury Arts Centre, such as the 70th anniversary tour of Agatha Christie's *The Mousetrap*, Paul Foot's *Dissolve* tour, *An Evening of Burlesque* and the musical tributes of *Fleetwood Bac*.

We hope you find much to enjoy and we look forward to welcoming you to an event very soon.

Gareth Machin, Artistic Director

Sebastian Warrack, Executive Director

STILL TO COME THIS AUTUMN

WILTSHIRE CREATIVE PRESENTS

THE PURR-FECT PANTOMIME TREAT FOR THE WHOLE FAMILY!

# Diek Whittington



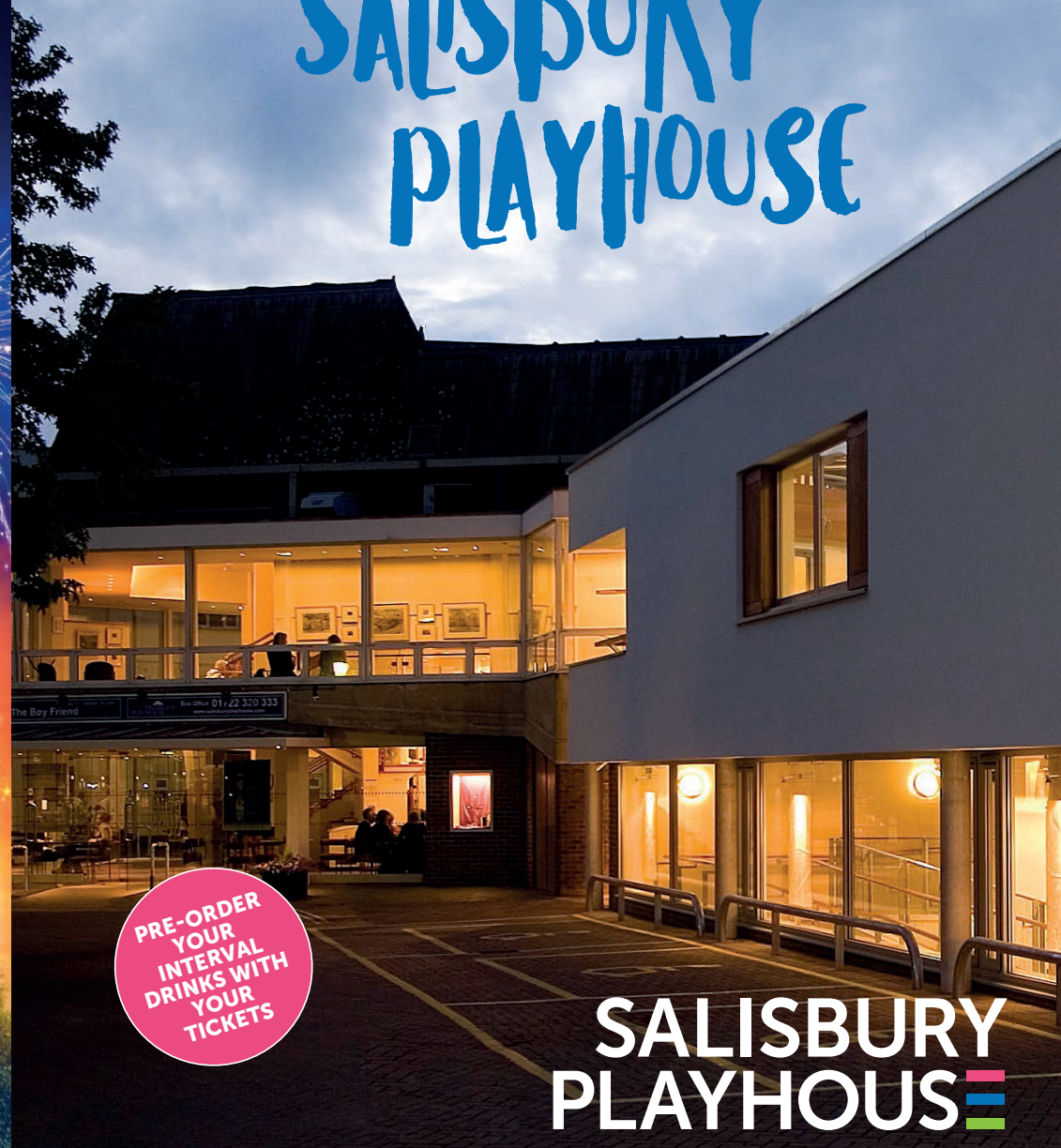
TICKETS SELLING FAST!

DON'T MISS OUR AWARD-WINNING PANTOMIME FROM 25 NOVEMBER 2023 – 7 JANUARY 2024

PROUDLY SPONSORED BY **HOWDEN**  
Howden, the new name for A-plan

wiltshirecreative.co.uk

# COMING UP AT SALISBURY PLAYHOUSE



PRE-ORDER YOUR INTERVAL DRINKS WITH YOUR TICKETS

# SALISBURY PLAYHOUSE

Ticket Sales 01722 320 333

# FASTLOVE: THE TRIBUTE TO GEORGE MICHAEL

## MUSIC

Salisbury Playhouse  
Thursday 25 January | 7.30pm  
Tickets from £19

Direct from London's West End, this is the world's favourite George Michael celebration!

Experience the power and emotion of all the hits, from *Wham!* right through his glittering career – make new memories while reliving old classics. This one is for the fans, as we honour one of the greatest musicians the world has ever seen.



# THE ONE LIKE JUDI LOVE

## COMEDY

Salisbury Playhouse  
Friday 26 January | 7.30pm  
Tickets from £23

Bringing her fresh, unapologetic and charismatic real talk to theatres across the country, *The One Like Judi Love* is Judi Love's first official tour! Expect unrelenting and hilarious anecdotes from Judi's life.

Age guidance strictly 14+

**'Not so much a comic,  
more a force of nature'**

Evening Standard



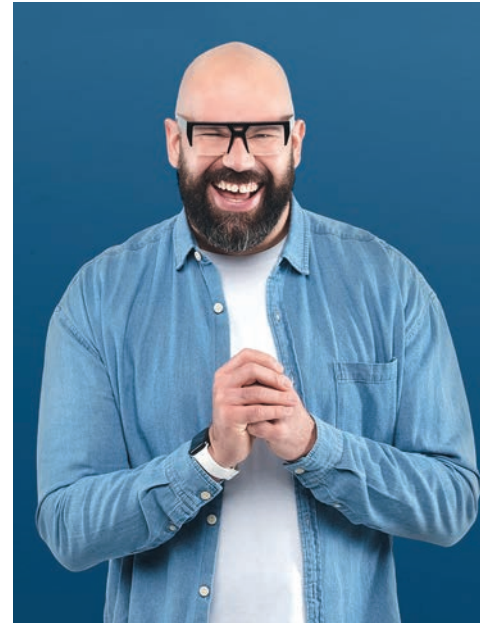
# TOM DAVIS: UNDERDOG

## COMEDY

Salisbury Playhouse  
Saturday 27 January | 7.30pm  
Tickets from £23

Embarking on his biggest tour to date with his brand new show, *Underdog*, Tom Davis will be exploring life as the longshot. From leaving school with no qualifications to years working on building sites, fatherhood, blockbuster films and yet still being told he's punching by a waiter.

Age guidance strictly 14+



# I, CLARA

## MUSIC

Salisbury Playhouse  
Tuesday 30 January | 7.30pm  
Tickets from £19

*I, Clara* tells Clara Wieck Schumann's life story in her own words. Drawn from letters and diaries, the narrative is interspersed with live performances and with music by Robert Schumann, Mendelssohn and Chopin. It is the sixth Composer Portrait created by Lucy Parham and is narrated by actress Dame Harriet Walter.

**'One of the must-see  
events of the musical  
calendar'**

BBC Music Magazine





## THE MAGIC OF MOTOWN

### MUSIC

Salisbury Playhouse | Wednesday 31 January | 7.30pm | Tickets from £20

It's no surprise that this show, now in its 18th year, is one of the biggest success stories in British theatre history. Get ready for the biggest Motown party of the year. You'll be going loco down in Acapulco as we take you back down memory lane with all the Motown classics from artists such as Marvin Gaye, Diana Ross and Stevie Wonder.



## AN EVENING OF BURLESQUE

### CABARET

Salisbury Playhouse | Thursday 1 February | 7.30pm | Tickets from £19

Roll up, roll up... the UK's longest-running burlesque show returns – bigger than ever. The ultimate variety show blends stylish cabaret, comedy, music, circus and burlesque, featuring world-class entertainers and stars of the stage and screen in an extravaganza of glitz and glamour. Expect the unexpected – it's cabaret o'clock!

Age guidance 18+



## FASCINATING AIDA

### CABARET

Salisbury Playhouse | Friday 2 February | 7.30pm | Tickets from £20

**The 40th anniversary show!** Britain's raciest and sassiest musical cabaret trio have a brand new show celebrating 40 years on the road and it's coming to Salisbury Playhouse. Uniquely charming, filthy and belligerent with diamond-sharp satire, this trio are still the mistresses of their craft.

Age guidance 14+



## ALFIE MOORE: A FACE FOR RADIO

### COMEDY

Salisbury Playhouse | Saturday 3 February | 7.30pm | Tickets from £20

Years of shift work and being punched in the face has left 'Fair Cop' Alfie with a 'face for radio'. A face not so much 'lived in' as inhabited by squatters with little regard for property maintenance! Middle-aged Alfie went from street cop to BBC radio star, but when TV fame beckoned could he grasp it or was he past it?

Age guidance 14+

A Wiltshire Creative production

# ONE LAST PUSH

by Chris Chibnall

## THEATRE



Salisbury Playhouse, Main House  
Thursday 15 February – Saturday 9 March | 7.30pm  
Thursday and Saturday matinees | 2.15pm\*  
Tickets from £13

A raucous new comedy from the writer of *Worst Wedding Ever*.

Jen and Mark have done the NCT classes.

They've written the birth plan, in precise detail.

They've even got the birth pool ready in the living room of their new flat. Almost.

Everything is set for the perfect, calm, idyllic home birth.

Except they've reckoned without intrusive family, nosy neighbours, uninvited guests and a new flat full of unwelcome surprises.

Chris Chibnall's new play hilariously depicts what happens when one of life's most magical events gets hijacked... by life itself.

Chris Chibnall is best known for writing *Broadchurch*, *Worst Wedding Ever* (2014 and 2017 Salisbury Playhouse) and *Doctor Who* (2018 – 2022).

**'Made me laugh so much I almost fell out of my seat!'**

The Daily Telegraph on *Worst Wedding Ever*

**PART OF  
THE SPRING  
MULTI-BUY!**

See page 49

Director  
**Gareth Machin**  
Designer  
**Simon Kenny**  
Lighting Designer  
**Johanna Town**  
Casting Director  
**Gabrielle Dawes  
CDG**

**Backstage Tour**  
Saturday 9 March  
at 11am

**BSL Performance**  
Tuesday 5 March  
at 7.30pm

**Captioned  
Performance**  
Tuesday 5 March  
at 7.30pm

**Relaxed Performance**  
Tuesday 5 March  
at 7.30pm

**Audio Described and  
Touch Tours**  
Thursday 7 March  
at 2.15pm and 7.30pm

Age guidance 14+

\*from Thursday 22  
February





## COUNTRY ROADS

### MUSIC

Salisbury Playhouse | Wednesday 13 March | 7.30pm | Tickets from £19

Leave your 9 to 5 worries at the door and get ready as we celebrate the kings and queens of country music.

Enjoy the biggest country songs of all time; '9 to 5', 'The Gambler', 'Walk the Line', 'Ring of Fire', 'Jolene' and more. Join us for a night of the very best country classics!



## NATIONAL THEATRE CONNECTIONS FESTIVAL 2024

### THEATRE

Salisbury Playhouse | Tuesday 19 & Wednesday 20 March | 7pm  
Tickets from £5

Connections is the National Theatre's annual nationwide youth theatre festival with a history of championing the talent of young people.

Every year, Connections commissions new plays from the UK's most exciting writers and theatre-makers for young people to perform.

Wiltshire Creative is delighted to be a partner theatre again in 2024.



## KING ARTHUR: A LEGENDARY COMEDY

### THEATRE

Salisbury Playhouse | Thursday 14 – Saturday 16 March | 7.30pm  
Saturday 16 March | 2.15pm | Tickets from £15



Camelot is in trouble. King Arthur knows that if he doesn't turn things around, this civilisation will be forgotten, and be known as nothing more than a rather dull time in British history. But when three hapless squires approach him about changing that legacy... a legend is born.

The stars of *The Three Musketeers* and award-winning funny men Le Navet Bete return to Salisbury Playhouse with a brand-new laugh-out-loud show for the ages. This hilarious retelling of the Arthurian legends is a comedy for the whole family.

Age guidance 7+



## OPERA BOYS: A NIGHT AT THE MUSICALS

### MUSIC

Salisbury Playhouse | Thursday 21 March | 7.30pm | Tickets from £15

After a SOLD OUT run in 2023, the Opera Boys are back with *A Night at the Musicals*, a fabulous evening of power-house vocals, immaculate four-part harmony, breathtaking musical medleys, stunning solo performances... and a few surprises!

Whether you're a fan of modern-day smash hit musicals, prefer the classics, or adore the definitive masterpieces, this show has something for everyone and is perfect for musical theatre lovers both young and old.



## MONEY FOR NOTHING

### MUSIC

Salisbury Playhouse | Friday 22 March | 7.30pm | Tickets from £19

A tribute to Dire Straits like no other before, Money for Nothing faithfully recreates their distinct sound in this sonic spectacular. Featuring all their legendary hits; audiences are treated to those soaring guitar solos and instantly recognisable riffs by an incredibly talented band in a musical encounter you will never forget.



## QUEENZ: THE SHOW WITH BALLS

### MUSIC

Salisbury Playhouse | Saturday 23 March | 7.30pm | Tickets from £18

Direct from London's West End, these dazzling drag divas deliver a night of fun as they dance like Britney and sing like Whitney. Prepare for jaw-dropping LIVE vocals and a night of party anthems. You'll be feeling fierce and fabulous!

Age guidance 14+

★★★★★ **'Camp comic silliness with genuine heart'**

Culture Fix





## HOUDINI'S GREATEST ESCAPE

### THEATRE

Salisbury Playhouse  
 Tuesday 26 March | 7.30pm | Wednesday 27 March | 2.15pm & 7.30pm  
 Tickets from £15

Harry Houdini is the world's greatest entertainer. Just as his death-defying escapology stunts have him, and his wife Bess, on the cusp of a career-defining performance for King Edward, he finds himself framed for murder by a gang of criminals in cahoots with the chief of police. Can Harry and Bess escape the plot and clear their names?

Age guidance 10+

**'A thigh-slapping, belly-aching romp of a whodunit comedy'**

British Theatre Guide

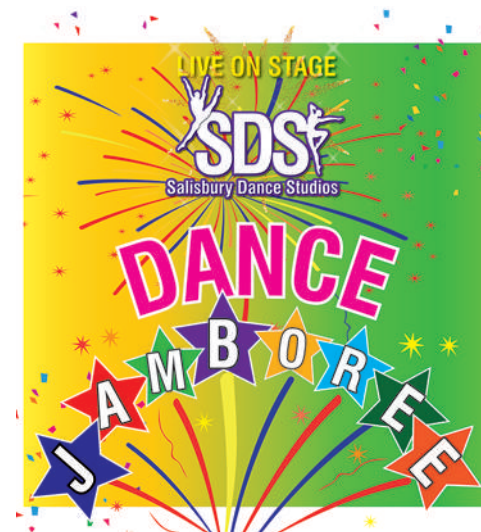


## KING FOR A DAY: THE NAT KING COLE STORY

### MUSIC

Salisbury Playhouse  
 Saturday 30 March | 7.30pm  
 Tickets from £18.50

Acclaimed vocalist Atila, accompanied by a world-class group of musicians, brings together live music, narration and rare archive images and footage to celebrate one of the greatest vocalists and entertainers of the 20th century: Nat King Cole. Featuring timeless songs such as 'Nature Boy', 'Unforgettable' and 'When I Fall in Love', join us to relive the golden era of music.



## SALISBURY DANCE STUDIOS

### DANCE

Salisbury Playhouse  
 Friday 5 & Saturday 6 April  
 2pm & 7pm  
 Tickets from £15

A family fun show to celebrate 30 years' partnership for Miss Kim and Miss Katy as Principals of Salisbury Dance Studios. Students from ages seven years upwards will be showcasing Classical Ballet, Modern Jazz and Tap styles in a rhythmical spectacle.

Stuff and Nonsense Theatre Company presents

# THE ADVENTURES OF THE LITTLE RED HEN

## FAMILY

Salisbury Playhouse, Main House

Tuesday 9 April | 2pm | Wednesday 10 April | 11am & 2pm

Tickets from £12 (under 12s), £16 (adults)

Share the magic of live theatre with your little ones and visit the incredible world of the Little Red Hen.

"Who will help me plant these grains of wheat?"

"Not I" said the Pig.

"Not I" said the Rat.

"Not I" said the Cow.

"Fair enough," said the Little Red Hen, "I'll do it myself!"

Making bread is hard work, but it would be a lot easier if the lazy farmyard animals got off their reclining sofas and lent a hand! Join our plucky little hen as she finds her own way to get stuff done.

An energetic adaptation of this much-loved story, featuring a breathtaking combination of brilliant puppetry, live music and unforgettable comedy.

Invest in your children's imaginations: share the magic of live theatre and take playfulness home with you!

Age guidance 3-10

***'Truly one of the best performances I have seen. Fully enjoyed by all three generations'***

Audience member

# The Adventures of THE LITTLE RED HEN



A Wiltshire Creative production

# A CHORUS OF DISAPPROVAL

by Alan Ayckbourn

## THEATRE



Salisbury Playhouse, Main House  
Thursday 25 April – Saturday 18 May | 7.30pm  
Thursday and Saturday matinees | 2.15pm\*  
Tickets from £13

Recently widowed Guy joins his local Amateur Light Operatic Society in hope of finding new friends and meaning in his life but ends up with a lot more than he bargained for!

In their upcoming production of *The Beggar's Opera*, Guy starts out playing a part with only one line, but his good looks and mild manners soon see him climb his way to the leading role.

Unable to say no to wine, women and song, Guy finds himself embroiled in a series of backhand deals, steamy affairs and pub brawls.

Ayckbourn's comedic genius comes to life in this award-winning show and promises to be a guaranteed night of blissful hilarity.

**'Heart-breakingly funny'**

The Guardian on a previous production

Director  
**Gareth Machin**

**Backstage Tour**  
Saturday 11 May  
at 11am

**BSL Performance**  
Tuesday 14 May  
at 7.30pm

**Captioned Performance**  
Tuesday 14 May  
at 7.30pm

**Relaxed Performance**  
Tuesday 14 May  
at 7.30pm

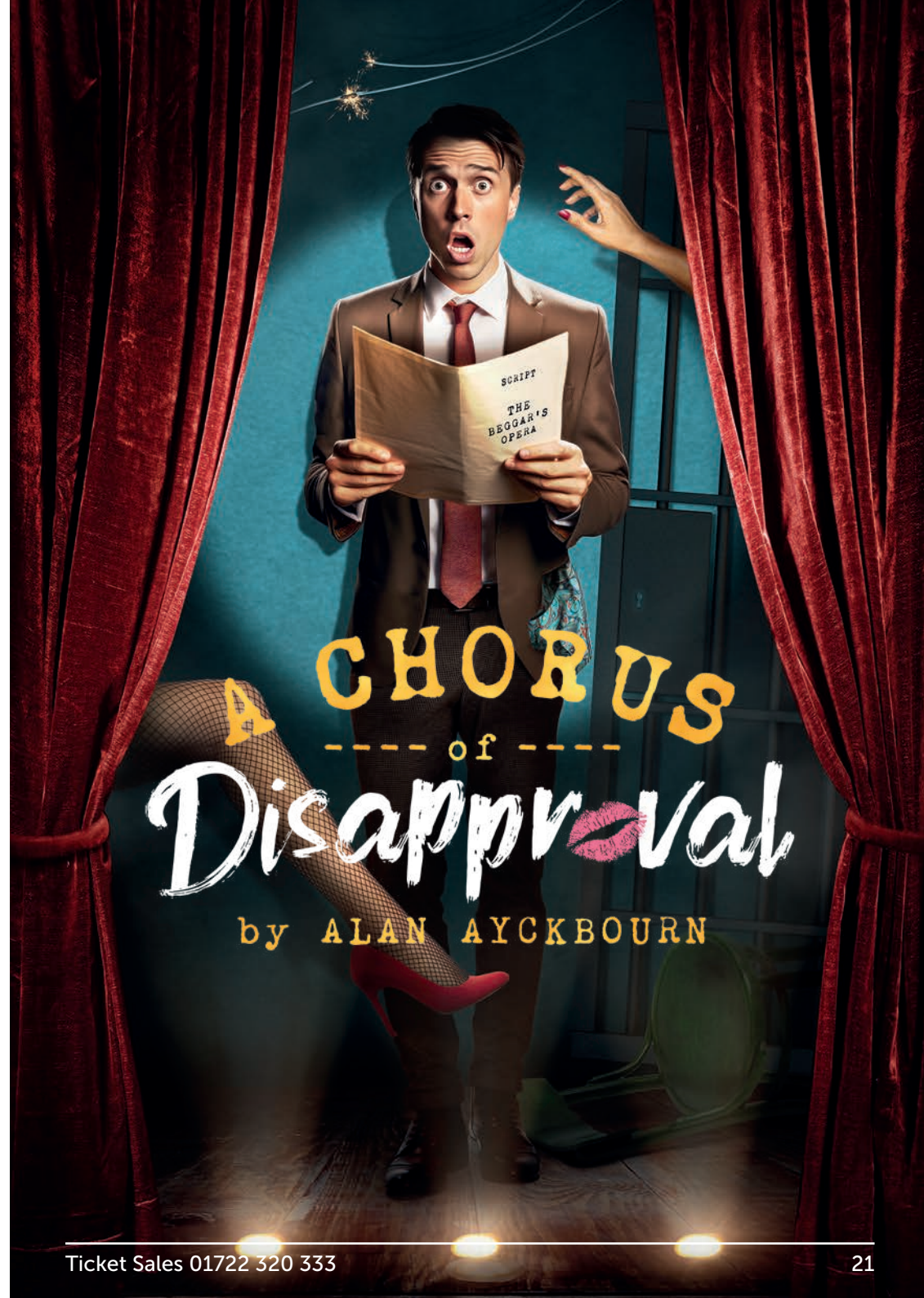
**Audio Described and Touch Tours**  
Thursday 16 May  
at 2.15pm and 7.30pm

Age guidance 12+

\*from Thursday 2 May

PART OF  
THE SPRING  
MULTI-BUY!

See page 49



Agatha Christie's

# THE MOUSETRAP 70TH ANNIVERSARY TOUR

## THEATRE

Salisbury Playhouse, Main House

Monday 1 – Saturday 6 July | 7.30pm

Thursday and Saturday matinees | 2.15pm

Tickets from £21

Agatha Christie's *The Mousetrap* is the world's longest-running play. This thrilling West End production is THE genre-defining murder mystery from the best-selling novelist of all time... case closed!

As news spreads of a murder in London, a group of seven strangers find themselves snowed in at a remote countryside guesthouse. When a police sergeant arrives, the guests discover – to their horror – that a killer is in their midst! Which one is the murderer? Who will be their next victim? Can you solve this world-famous mystery for yourself?

Now celebrating 70 years, Agatha Christie's *The Mousetrap* has kept millions of people from every corner of the globe on the edge of their seats. COULD YOU BE NEXT?

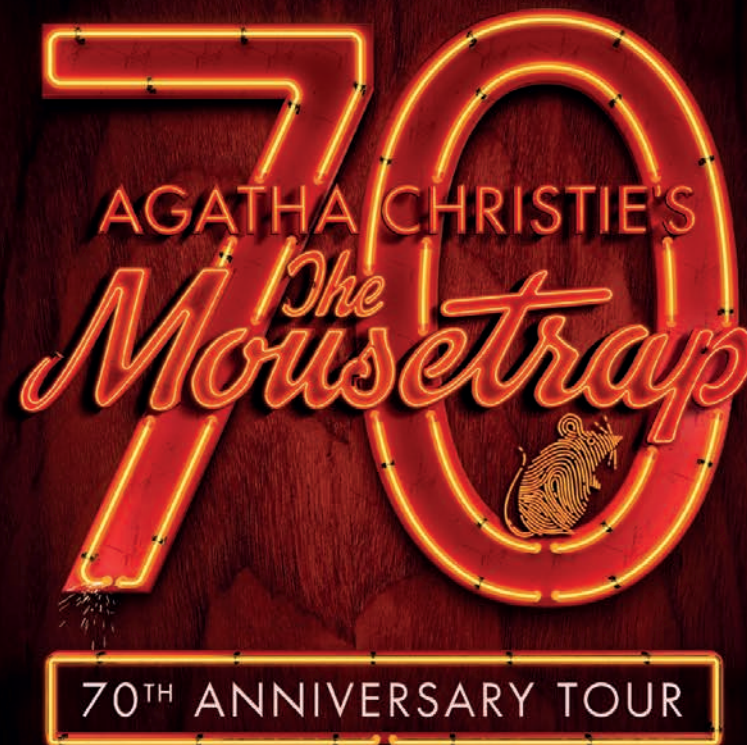
Age guidance 7+

**'The cleverest murder mystery of British Theatre'**

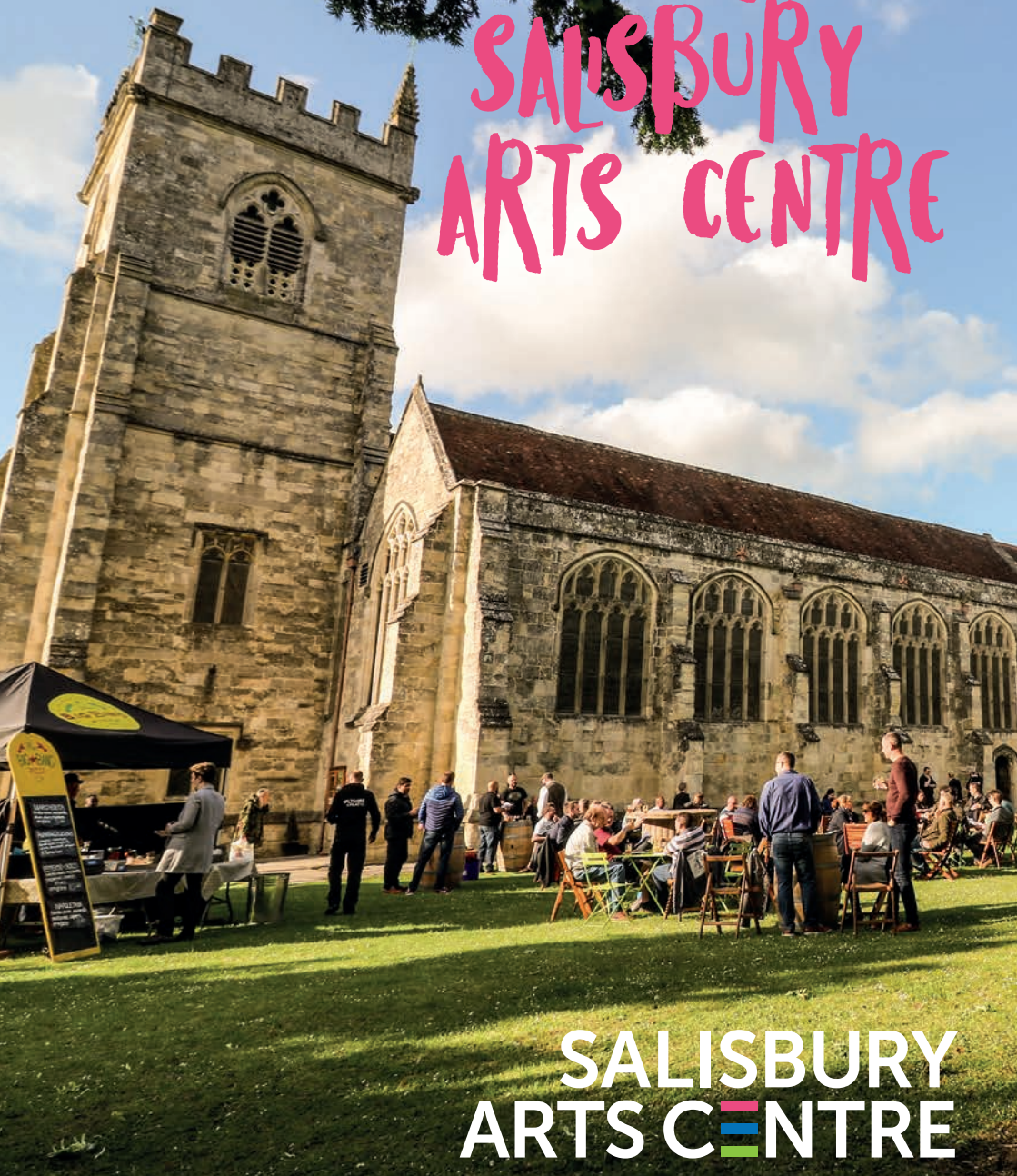
The Telegraph



HAVE **YOU**DUNNIT?



# COMING UP AT SALISBURY ARTS CENTRE



**SALISBURY  
ARTS CENTRE**

wiltshirecreative.co.uk



## OMID DJALILI

COMEDY

Salisbury Arts Centre  
Wednesday 17 & Thursday 18 January  
7.30pm | Tickets from £20

Come and see Omid Djalili work on new material. The legendary festival favourite, stand-up comedian, and film and television star guarantees you an evening of experimentation.

Age guidance 16+

**'One of the most  
subversive, let alone  
funniest, comedians  
around'**

The Guardian



## BARNSTORMERS

COMEDY



Salisbury Arts Centre  
Friday 26 January, Friday 23 February, Friday 22 March, Friday 26 April | 8pm  
Tickets from £15

Get ready for a night of hilarity and laughter, as three top acts from the London comedy circuit regale you with witty wisecracks and tall tales. See our website for line-up details ahead of the show.

Age guidance 18+

Ticket Sales 01722 320 333

# FRIEND (THE ONE WITH GUNTHER)

## THEATRE

Salisbury Arts Centre | Saturday 3 February | 7.30pm | Tickets from £22

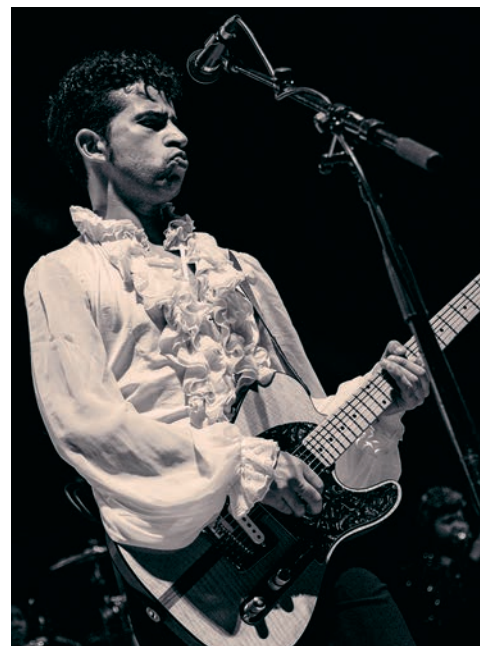
This show from acclaimed comic actor Brendan Murphy reimagines the TV classic through the eyes of barista Gunther. Settle down in Gunther's café to hear the true insider story of what happened to Ross, Rachel, Phoebe, Chandler, Monica and Joey from the *F.R.I.E.N.D.S* character who kept them caffeinated through all the highs, lows, love affairs and failed auditions along the way!

Age guidance 14+



★★★★★ 'A one-hour, one-man wonder'

Dorset Echo



# NEW PURPLE CELEBRATION: THE MUSIC OF PRINCE

## MUSIC



Salisbury Arts Centre  
Thursday 1 February | 7.30pm  
Tickets from £22

New Purple Celebration celebrate the music, life and legacy of Prince with a non-stop, hit-packed show. Described in the press as "nothing short of a huge party," expect to see, hear and feel the hits from one of the most loved artists of all time.



# THE HAAR

## MUSIC



Salisbury Arts Centre  
Friday 9 February | 7.30pm  
Tickets from £22

A fresh, boundary-pushing take on traditional songs.

The Haar introduces the formidable singing talent of Molly Donnelly combined with three of the most exciting instrumentalists on the folk and traditional music circuit.

This is music that is not afraid to transcend borders, while recognisably born of the traditional music that the members have grown up with. The Haar are unapologetic in bending the rules to create a unique and compelling sound.

**'We need more music like this; spontaneous, alive and affecting'**

Folk Radio UK



## TOM STADE

### COMEDY

Salisbury Arts Centre  
Saturday 10 February | 7.30pm  
Tickets from £20.50

Direct from the Edinburgh Fringe Festival, join legendary Canadian superstar Tom Stade with his hilarious show *Natural Born Killer*.

A master of his craft; unabashed and mischievous with an innate ability to connect to audiences, Tom Stade remains one of the most compelling and instinctive stand-ups around.

Age guidance 16+

**'Stand-up elite'**

Chortle



## RYAN YOUNG

### MUSIC

Salisbury Arts Centre  
Saturday 24 February | 7.30pm  
Tickets from £17

Ryan Young brings new and exciting ideas to traditional Scottish music, receiving international praise for his spell-binding interpretations on the fiddle.

Ryan brings new life to very old, often forgotten tunes by playing them in his own unique way. His fiddle playing is brimming with fresh melodic ideas, an uplifting rhythmic drive and a great depth of dynamics and precision. His sound is very distinctive and takes the listener on an emotional and adventurous journey in any performance.

★★★★★

**'...a force of nature'**

The Scotsman

# BREATHE: A ROLLERCOASTER LOVE LETTER TO THE LIFESAVING POWER OF MUSIC BY SK SHLOMO

## MUSIC & THEATRE



Salisbury Arts Centre | Friday 16 February | 7.30pm  
Tickets from £5 (under 18s), £15 (adults)

With rave reviews after premiering at the world-famous Royal Albert Hall, and winning a Fringe Award at Edinburgh Festival, *Breathe* is a thrilling mix of cutting-edge music tech, heartwarming personal storytelling, and the breathtaking virtuosity that makes SK Shlomo a main-stage festival favourite, a world-champion beatboxer, and collaborator of choice for megastar acts like Ed Sheeran, Bjork and Gorillaz.

Age guidance 12+

★★★★★ **'Absolutely superb'**

BBC 5 Live



## BREATHE ACADEMY WORKSHOPS

Thursday 25 January & Friday 16 February

Join SK Shlomo for a free workshop and learn to explore your own story using some of the breathtaking music, technology and performance skills on display in their award-winning solo show, *Breathe*. Ages 12 – 25. See our website for more details.

## MOSCOW DRUG CLUB

### MUSIC

Salisbury Arts Centre  
Friday 1 March | 7.30pm  
Tickets from £18

A curious musical place where elements of Berlin Cabaret, Latin Tinge and French Musette meet...

Featuring original material and songs by the likes of Jacques Brel, Leonard Cohen and Eartha Kitt, you are cordially invited to share a wry smile with us as you enter the darkly comic world of Moscow Drug Club.

Age guidance 12+



## YOU'RE BARD

### THEATRE



Salisbury Arts Centre  
Saturday 2 March | 7.30pm  
Tickets from £20

Four actors. Four Shakespeare shows.  
Endless possibilities.

You – the audience – decide everything, from the play to the performance style. Even which actor plays which part. This hilarious, unpredictable new show promises an unforgettable evening of Shakespeare unlike anything you've ever seen before!

**'Delightfully daft'**

The Stage



## INTERNATIONAL WOMEN'S DAY 2024: A CONCERT WITH LOUISE JORDAN

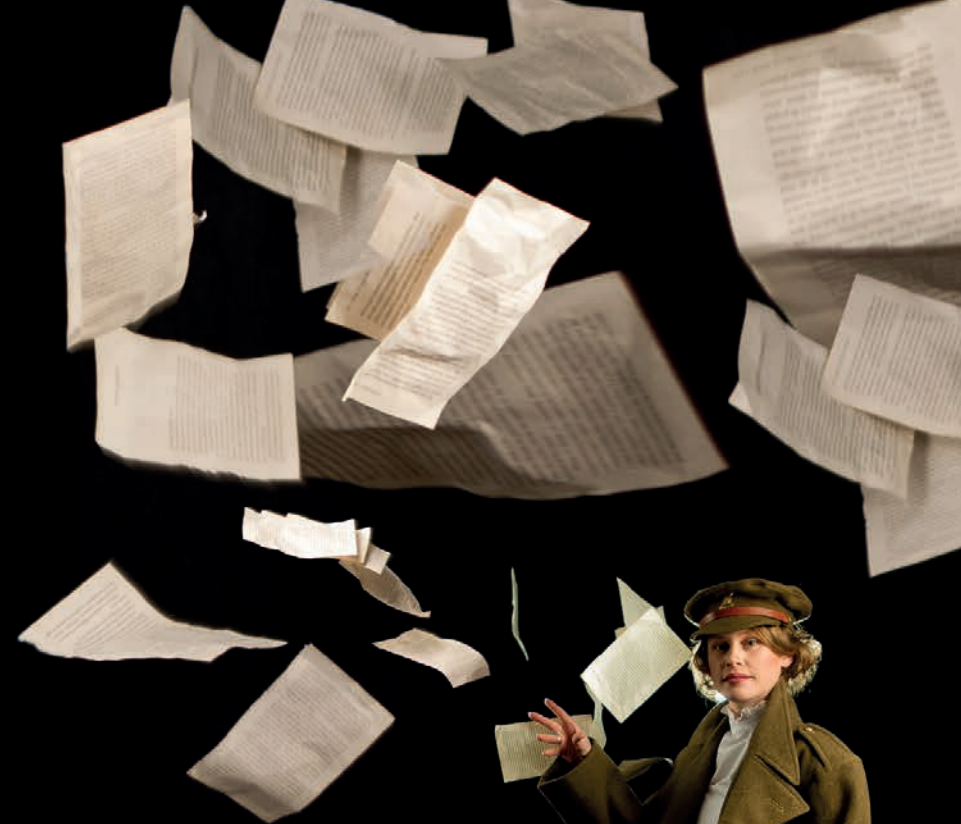
### MUSIC



Salisbury Arts Centre | Friday 8 March  
7.30pm | Tickets from £15

Join singer, songwriter and storyteller Louise Jordan for a musical concert in celebration of International Women's Day 2024. Having toured across the UK and Europe since 2010, Louise now dedicates her time to researching and spotlighting hidden women's stories through song. From engineers and physicians to spies and smuggleresses, Louise will also share stories from her 12 years of touring as a solo artist.

Age guidance 12+







## AURIE STYLA: THE AURATOR TOUR

COMEDY

Salisbury Arts Centre  
Saturday 9 March | 7.30pm  
Tickets from £15

After a year of performing worldwide, award-winning comedian Aurie Styla is back on tour, with his biggest one to date. Join him as he talks about this wild world and his journey to make sense of it in *The Aurator*!

As seen on *Deep Fake Neighbour Wars* (ITVX), *Comedy Central Live*, *Jonathan Ross' Comedy Club* (ITV), and more.

Age guidance 16+



## A ST PADDY'S DAY HOOLIE

MUSIC

Salisbury Arts Centre  
Saturday 16 March | 6pm  
Tickets from £8

Salisbury Live Beggars' Bash and Endorse It Festival present two stages featuring six of the region's top festival acts. Join us to celebrate St Patrick's Day amidst the best local talent.

See our website for line-up details ahead of the show.

Age guidance 16+ (under 18s must be accompanied by an adult)



## HOLLIE MCNISH: THE LOBSTER TOUR

POETRY



Salisbury Arts Centre  
Thursday 21 March | 7.30pm  
Tickets from £15

Hollie McNish is back with a brand-new book, *Lobster: and other things I'm learning to love*. In which Hollie shines a beautifully poetic lens upon things we have been taught to hate, and which we might just learn to love again. Expect strong language and adult content, gift-wrapped in gorgeously crafted poetry. A live reading not to be missed.

Book signing after the performance.

Age guidance 14+

**'One of the best poets we have'**

Matt Haig



## REGINALD D. HUNTER

COMEDY

Salisbury Arts Centre  
Saturday 23 March | 7.30pm  
Tickets from £22

In these supercharged socio-political times, the challenge is separating what's true and what's real. Lucille Hunter proudly proclaimed, "It's easy to see through sh\*t, the hard part is pretending you haven't." Join Reginald D. Hunter for an hour of exploring this phenomenon in this progressive work in a pre-next-variant world.

Age guidance 18+



**'Comedy of a rare scope'**

The Times



## ANIA MAGLIANO: I CAN'T BELIEVE YOU'VE DONE THIS

### COMEDY

Salisbury Arts Centre  
Thursday 28 March | 7.30pm  
Tickets from £16

To the hairdresser at [redacted] salon: *You can take my money. You can take my dignity. You can take too much off the ends. But you cannot take my right to talk about it on stage.*

This is a show about the worst haircut of Ania Magliano's life.

Ania's critically acclaimed 2022 debut run sold out at Edinburgh, Soho Theatre and Leicester Square Theatre.

Age guidance 14+

★★★★★ *'Will have you crying with laughter'*

The Guardian



## MISTERS DISCOS 60s, 70s & 80s REVIVAL

### MUSIC

Salisbury Arts Centre  
Saturday 30 March | 8pm  
Tickets from £11

Misters Discos and Wiltshire Creative have teamed up to bring you some serious nostalgia! Get those bell bottoms ready or pop on your favourite leg warmers and enjoy a night of dancing to some of your favourite tunes.

Fancy dress strongly encouraged! If you love to boogie and dance the night away, this is the event for you.

Age guidance 18+



## JAM NIGHT

### YOUNG PEOPLE

Salisbury Arts Centre | Friday 5 April | 5pm | Tickets from £3

Bring your instruments or come as you are. We welcome musicians, singers, songwriters, rappers, MCs, etc! All abilities are invited to join a facilitated jamming session with professional musician and sound engineer, Dave Greene.

Did you know? We are offering a free rehearsal space for young musicians in February. See our website for more information.

For ages 14 – 21



## FLEETWOOD BAC

### MUSIC

Salisbury Arts Centre | Saturday 6 April | 7.30pm | Tickets from £23

Fleetwood Bac are the world's first and best Fleetwood Mac tribute band. Endorsed by Mick Fleetwood himself, Fleetwood Bac are the only Mac tribute band to authentically replicate the classic Rumours line-up. Over the last few years they have received rave reviews from ecstatic audiences wherever the band played, wowing audiences as far afield as Dubai, St Tropez, the Cayman Islands and Monte Carlo, and twice selling out the world-famous Minack Theatre in Cornwall.



## SHAPE OF YOU: THE MUSIC OF ED SHEERAN

MUSIC



Salisbury Arts Centre | Friday 12 April | 7pm | Tickets from £23

The hit stage production, *Shape of You*, features the amazing music of one of the world's greatest singer-songwriters, Ed Sheeran. Complete with Ed's signature loop pedal and a fantastic live band, the performance will have you captivated throughout.



## ALASDAIR BECKETT-KING: NEVERMORE

COMEDY

Salisbury Arts Centre  
Saturday 13 April | 7.30pm  
Tickets from £19

Out of the swirling maelstrom he steps, his sword of jokes, his shield of whimsy and his armour made of a third amusing thing. Cursed to return on tour. Multi-award-winning Alasdair Beckett-King unravels life's shallowest mysteries.

Age guidance 14+

★★★★★ *'Clockwork comedy perfection'*

Stewart Lee



## THE SIGNATURES NORTHERN SOUL LIVE

MUSIC



Salisbury Arts Centre | Saturday 20 April | 7.30pm | Tickets from £25

The Signatures featuring Stefan Taylor are the UK's premier Northern Soul act. Step back to the sounds of the Twisted Wheel, Blackpool Mecca and Golden Torch. Featuring special guest and original Northern Soul artist Lorraine Silver ('Lost Summer Love') and a highly talented 10-piece band, your feet won't be able to stop dancing. An absolute must for Soul-loving fans.



## WOMEN WHO GAVE NO F\*CKS

THEATRE



Salisbury Arts Centre  
Saturday 27 April | 7.30pm  
Tickets from £12 (Under 25s),  
£16 (adults)

Mythic mayhem, human clap-o-meters and audience power! Brace yourselves for tales to make you want to rip up the rules and riot. Two teams of stand-up tale-tellers slam down stories of the super-women and unstoppably imperfect goddesses who stalk through the world's myths and legends. Who will you crown Ultimate Woman Who Gave No F\*cks?

Age guidance 14+



## PAUL FOOT: DISSOLVE

COMEDY

Salisbury Arts Centre  
Friday 3 May | 7.30pm  
Tickets from £18

Life is a stress, but what happens when everything you thought was important – your problems, grievances, your very identity – simply disappears?

Multi-award-winning comedian Paul Foot presents his most ground-breaking show ever.

Age guidance 16+



**'Funnier and more daring than I've ever seen him'**

Chortle



## SONS OF TOWN HALL

MUSIC



Salisbury Arts Centre  
Saturday 4 May | 7.30pm  
Tickets from £18

Welcome to the mythic world of Sons of Town Hall, the international duo of George "Ulysses" Brown (UK) and Josiah "Chester" Jones (US).

With poetic phrases and sublime harmonies, their masterful songs of wonder and woe, heartbreak and hope beg you to sing along.

**'A study in beautiful storytelling through song'**

RNR Magazine



## ALL FLOYD DIVISION BELL 2024 TOUR

MUSIC

Salisbury Arts Centre  
Friday 10 May | 8pm  
Tickets from £24

2024 marks the 30th anniversary of the release of one of Pink Floyd's groundbreaking albums, *The Division Bell*. All Floyd have meticulously recreated the sounds and effects from the album to convey the very essence of the original recordings and live shows.

Talented and dedicated musicians and highly experienced sound and lighting crew unite to produce an utterly live and enthralling show, befitting the artistic production of the totemic Pink Floyd.



## JAZZ DYNAMOS FEATURING LUCY RANDELL

MUSIC

Salisbury Arts Centre  
Friday 17 May | 7.30pm  
Tickets from £18

Making a welcome return to Salisbury Arts Centre, Jazz Dynamos are back with their special versions of well-known songs from the 70s and 80s, transforming them with a mix of jazz, bossa and samba, all featuring the wonderful vocals of Lucy Randell.

Their unique set of original, entertaining, contemporary jazz arrangements includes hits by Dolly Parton, Madonna, U2, The Police, a-ha and Britney Spears.



## MARK WATSON

### COMEDY

Salisbury Arts Centre  
Saturday 18 May | 7.30pm  
Tickets from £22

Mark Watson's 12-year-old son has just got a phone. His 70-year-old dad has been through the most frightening experience of his life. Both a dad and a kid himself, around the midpoint of his life, the *Taskmaster* star and multiple award-winner – now also famous as one-third of YouTube cult sensation *No More Jockeys* – returns.

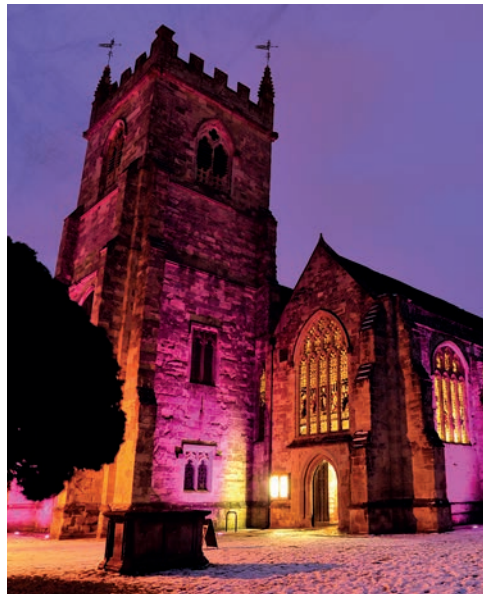
There'll be a lot of jokes, and a show that's different every night.

Age guidance 14+



**'A genius-level comic'**

Time Out Melbourne



A Wiltshire Creative production

## GHOSTS AND GRIMM TALES

### THEATRE



Salisbury Arts Centre  
Thursday 25 & Friday 26 July | 7pm  
Saturday 27 July | 2pm and 7pm  
Tickets from £12 (Under 25s),  
£18 (adults)

Wiltshire Creative's youth theatre Stage 65 presents an evening of Philip Pullman's *Grimm Tales* (adapted by Philip Wilson) in the spooky surroundings of Salisbury Arts Centre. These original tales will incorporate ghost stories with dark, sinister twists. Join us if you dare!

Age guidance 10+

**JOIN YOUTH THEATRE TODAY TO BE PART OF THE SHOW, VISIT OUR WEBSITE TO FIND OUT MORE!**

## DATES FOR YOUR DIARY SUMMER 2024



## SALISBURY INTERNATIONAL ARTS FESTIVAL

26 MAY – 9 JUNE



# TAKE PART

# WITH WILTSHIRE CREATIVE



## FRIDAY UNDER 5s

Fridays during term time | 10.30am  
Salisbury Playhouse

Ideal for early years; ages 2 – 5.

Join us at Salisbury Playhouse every Friday for a fun workshop exploring different art forms each week, including dance, drama and art. These sessions are designed for under 5s and their grown-ups to enjoy together!

## DANCE SIX-0

Spring: 3 January – 27 March  
Summer: 17 April – 10 July  
Wednesdays | 10.15am and 12pm  
Salisbury Arts Centre, White Room

Join the friendly and fun weekly open classes on Wednesdays which attract people approaching 60 and over, with diverse levels of movement. Sessions encourage dancers to embrace the joy of life through dance and movement.



## FAMILY FIESTA AT BEMERTON HEATH

Monday 12 February | 11am  
Harlequins Football Club

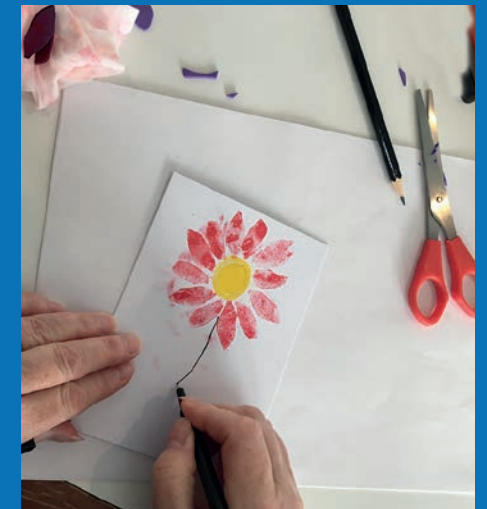
Wiltshire Creative and partners are bringing back the popular Family Fiesta for February half term! There will be something for all the family to enjoy for FREE including performances, workshops, craft and more.

Check our website for more details.

## MIND THE GAP

12 January – 19 July  
Fortnightly | 10.30am  
Salisbury Playhouse  
Tickets from £5

Mind The Gap is an opportunity for older people to meet and explore the creative arts. The group meets fortnightly for coffee, conversation and creativity! Art forms vary weekly and have included dance, drumming, play reading and printing.





## GET CREATIVE – MAKE MUSIC!

Thursday 15 February  
Tuesday 9 April  
10.15am or 1.30pm  
Salisbury Playhouse, The Salberg

Make music with us in the school holidays!  
An engaging and fun music making workshop for children aged 7–11 (school years 3–6) in partnership with Salisbury Area Young Musicians. No experience necessary!



## HOME EDUCATION WORKSHOPS

Friday 2 February | 1.30pm  
Friday 3 May | 1.30pm  
Salisbury Playhouse | £5 per child

Join Wiltshire Creative for an afternoon of activities designed specifically for home educated children. Arts professionals will lead workshops, talks and tours uncovering the magic of the theatre and creative industries.

## YOUTH THEATRE

Stage 65 is our Youth Theatre for ages 6–21. Explore storytelling through drama techniques, performance skills and games, learn new artforms, meet new friends and enjoy the world of theatre. We can support young people from all backgrounds, offer support for individuals with additional needs and offer financial assistance. JOIN NOW to take part in our next production.

## WILTSHIRE CREATIVE ACADEMY

In partnership with Wiltshire College and University Centre, we deliver diplomas at Levels 1–3 in Performing and Production Arts. Accredited by University of the Arts London, this qualification is for students over 16 who want to develop their skills in a professional arts environment.

## YOUNG AMBASSADORS

A great opportunity for anyone aged 14–21 to help inform the work that Wiltshire Creative do with young people in Salisbury, Wiltshire and beyond. Our Young Ambassadors create events and get involved with projects and activities throughout the year. They can earn digital badges that demonstrate professional skills which support future career opportunities.



SCAN HERE TO FIND OUT MORE!

# THANK YOU

As an arts and education charity, we have to raise 70% of our annual income through events, refreshments and fundraising. The generous support we receive from funders, sponsors and supporters is vital, so that the 'show can go on'!

## Major Funders



Supported using public funding by  
**ARTS COUNCIL ENGLAND**

Funded by  
**Wiltshire Council**



## Sponsors and corporate partners



## Trusts and Foundations

A W Gale Charitable Trust, Cultural Recovery Fund DCMS, Earl of Chichester's Charitable Trust, Foyle Foundation, Heritage Lottery Fund, Noel Coward Foundation, RTR Foundation, South Wilts Mencap, Stone King Foundation, The Andrew Lloyd Webber Foundation, The Arts Society Sarum, The Gunter Charitable Trust, The J P Marland Charitable Trust, The Verdon-Smith Family Charitable Trust, Walter Guinness Charitable Trust, Wiltshire Area Board, Wiltshire Community Foundation, Wiltshire Council Recovery Fund, Wiltshire Music Connect.

## Investors – Donations of £1000+

Helen & Simon Birchenough, Gerry & Susie Blundell, Doric & Sara Bossom, Stuart Cannell, Rory Carter & Dame Elizabeth Neville, Tom & Rosie Clay, Prof Dick Clements & Jenny Taylor, Jim Douglas, Paul & Sue Halliden, Simon Inch, Anne Marlow, Chris & Clem Martin, Jo Seaton, Robert Stiby, Eve Tytherleigh, Michael Wade, Christopher & Frances Wain.

## Commissioners – Donations of £500+

Mikol Curteis, Bill Harper & John Locker, Brigitte Potts, Elaine Roberts, Janet Watford.

## Benefactors – Donations of £250+

Richard & Paddy Archer, John & Catherine Avery Jones, Michael & Hilary Bird, Tim Crarer, Nicola Elcomb, Richard Elliott, Mat Freer, Richard & Judy Haes, Vicky Hickey,

Desmond & Jenny Longfield, Peter & Brenda Hunt, Simon McEnery & Jeremy Davies, Mike Moody & Birthe Mester, Lady Newbigging, Valerie Oldrey, Alison & Steve Payne, Steve Pickard, Jane Podkolinski, Susan Roller, Dame Rosemary Spencer, Jack Stone, Brian & Angela Sutton, Colin & Sue Taylor, Charles & Francoise Tongue, William & Diana Verdon-Smith, Jonny & Charlotte White, Nigel & Wendy Wingate.

## Producers – Donations of £180+

Sue Bourne, Graham & Diana Castle, David & Rosemary Chapell, John & Rosemary Cox, Michael & Barbara Crow, Rowland Davies, Patrick Dolan, John & Christine Edwards, Sue Goddard, Gordon & Kay Griffiths, Jennifer Hoare, Steven Kemp, Fraser & Rosemary Macdonald, Robert Macnaughtan, Norman & Jane Martin, Christine Mason, Jeannette McNeil-Hook, B J Morant, Sir Hayden & Lady Phillips, Charlotte Pope, Christine Quayle, Alison Rivers, Brian Sharpe, Julian Sims, John & Julia Slade, Barbara Smith, Enid Smith, Jeremy Stevens, Roger Thompson & Vanessa Harrison, Sheila Warrander, Jack Wills, James & Lisa Woods.

## Legacies

The Late Keith Miller, The Late Miss Victoria Grayson, The Late Mr David Quayle, The Late Mr John English, The Late Mr Richard Griffin, The Late Mrs Anne Hatcher, The Late Mrs Brenda Ashenden, The Late Mrs Eileen Pinniger, The Late Mrs Elizabeth Batten, The Late Ms Audrey Herron.

# BECOME A SUPPORTER

Wiltshire Creative needs passionate philanthropists like you to ensure that culture and creativity in Salisbury continues to thrive. Now more than ever we need your generosity, so please become a Supporter and make a regular donation today.

## Join our... MEMBERS

**Donors who gift £40+ a year, or £3+ a month:** Members are at the heart of our organisation and actively help us deliver such a broad programme of work.

## Join our... BENEFACTORS

**Donors who gift £250+ a year, or £20+ a month:** Help us create brand new work across all art forms and for all ages, working with new and exciting creatives.

## Join our... PRODUCERS

**Donors who gift £180+ a year, or £15+ a month:** Support the creative process and enable our work getting a show from page to stage.

## Join our... INVESTORS

**Donors who gift £1000+ a year, or £83+ a month:** Investors are visionary donors who enable the organisation to flourish and give back to our community.

Thanking our generous donors and the difference you make is so important to us. We acknowledge and thank our Supporters in many ways (in line with HMRC Gift Aid guidelines) such as inviting you to join us for special performances, sharing exciting behind the scenes news, offering digital information on productions and casts and making sure you have a chance to book your favourite seats.

We love to hear from current and future Supporters to find out more about the productions and projects that excite you and share ways that you can be involved with securing a bright future for performance, creativity and the community in Salisbury.

***'The smallest act of kindness, is worth more than the grandest intention'***

Oscar Wilde

**Play your part and become a Supporter today...**

Email [development@wiltshirecreative.co.uk](mailto:development@wiltshirecreative.co.uk)

or scan the QR code





# WELCOMING TO ALL

At Salisbury Playhouse and Salisbury Arts Centre – and wherever we present work – we aim to make your visit as enjoyable and comfortable as possible. Where we can, we provide specified accessible performances – these are listed on show pages.

**AD** Audio Described

**TT** Touch Tours

**BSL** interpreted

**CAP** Captioned

**WC** Wheelchair user access

**RP** Relaxed and dementia friendly

Scan here to find out more



Please contact Ticket Sales or visit our website for more information.

## Backstage Tours at Salisbury Playhouse

From £10 per person, step behind the scenes and find out how we make our celebrated productions. Visit our website for more details.



# BOOKING INFORMATION

Book online at [wiltshirecreative.co.uk](http://wiltshirecreative.co.uk)

Book in person at **Salisbury Playhouse**

Book over the phone by calling **01722 320 333**, Monday – Saturday, 10am – 4pm

Ticket prices shown are inclusive of a booking fee that goes towards the cost of operating and maintaining Wiltshire Creative. The fee does not apply to selected productions.

## DISCOUNTS

### Spring Multi-buy

Book for both Wiltshire Creative productions this season and save! Purchase tickets for *One Last Push* and *A Chorus of Disapproval* at the same time and save 15%.

All discounts apply on the top two price bands only and cannot be used in conjunction with any other offers. For the multi-buy offer, productions must be booked at the same time. The discount does not apply in retrospect.

**S** Look out for this symbol for events where we acknowledge our Supporters with a thanking benefit.

Wiltshire Creative is a proud partner of Tickets for Troops, offering free tickets to selected shows to their members. Contact Ticket Sales for more information.

### Ticket Exchanges

Ticket exchanges can be offered up to 48 hours before the performance. A £3 per ticket exchange fee will be charged.



Registered Company No. 499076 | Registered Charity No. 249169 | VAT No. 834 8546 01  
Details are correct at the time of going to print. Wiltshire Creative reserves the right to alter the information provided at any time.

# CALENDAR

<b>17 – 18 JAN</b>	Omid Djalili	<b>COMEDY</b>	<b>25</b>
<b>25 JAN</b>	Fastlove: The Tribute to George Michael	<b>MUSIC</b>	<b>6</b>
<b>26 JAN</b>	Barnstormers	<b>COMEDY</b>	<b>25</b>
<b>26 JAN</b>	The One Like Judi Love	<b>COMEDY</b>	<b>6</b>
<b>27 JAN</b>	Tom Davis: Underdog	<b>COMEDY</b>	<b>7</b>
<b>30 JAN</b>	I, Clara	<b>MUSIC</b>	<b>7</b>
<b>31 JAN</b>	The Magic of Motown	<b>MUSIC</b>	<b>8</b>
<b>1 FEB</b>	New Purple Celebration: The Music of Prince	<b>MUSIC</b>	<b>27</b>
<b>1 FEB</b>	An Evening of Burlesque	<b>CABARET</b>	<b>8</b>
<b>2 FEB</b>	Fascinating Aida	<b>CABARET</b>	<b>9</b>
<b>3 FEB</b>	Friend (The One with Gunther)	<b>THEATRE</b>	<b>26</b>
<b>3 FEB</b>	Alfie Moore: A Face for Radio	<b>COMEDY</b>	<b>9</b>
<b>9 FEB</b>	The Haar	<b>MUSIC</b>	<b>27</b>
<b>10 FEB</b>	Tom Stade	<b>COMEDY</b>	<b>28</b>
<b>16 FEB</b>	SK Shlomo: Breathe	<b>THEATRE</b>	<b>29</b>
<b>15 FEB – 9 MAR</b>	One Last Push	<b>THEATRE</b>	<b>10 – 11</b>
<b>23 FEB</b>	Barnstormers	<b>COMEDY</b>	<b>25</b>
<b>24 FEB</b>	Ryan Young	<b>MUSIC</b>	<b>28</b>
<b>1 MAR</b>	Moscow Drug Club	<b>MUSIC</b>	<b>30</b>
<b>2 MAR</b>	You're Bard	<b>THEATRE</b>	<b>30</b>
<b>8 MAR</b>	International Women's Day 2024: a concert with Louise Jordan	<b>MUSIC</b>	<b>31</b>
<b>9 MAR</b>	Aurie Styla: The Aurator Tour	<b>COMEDY</b>	<b>32</b>
<b>13 MAR</b>	Country Roads	<b>MUSIC</b>	<b>12</b>
<b>14 – 16 MAR</b>	King Arthur: A Legendary Comedy	<b>THEATRE</b>	<b>13</b>
<b>16 MAR</b>	A St Paddy's Day Hoolie	<b>MUSIC</b>	<b>32</b>
<b>19 &amp; 20 MAR</b>	National Theatre Connections Festival 2024	<b>THEATRE</b>	<b>12</b>

● Salisbury Playhouse

● Salisbury Arts Centre

<b>21 MAR</b>	Hollie McNish: The Lobster Tour	<b>POETRY</b>	<b>33</b>
<b>21 MAR</b>	Opera Boys: A Night at the Musicals	<b>MUSIC</b>	<b>14</b>
<b>22 MAR</b>	Barnstormers	<b>COMEDY</b>	<b>25</b>
<b>22 MAR</b>	Money for Nothing	<b>MUSIC</b>	<b>15</b>
<b>23 MAR</b>	Reginald D. Hunter	<b>COMEDY</b>	<b>33</b>
<b>23 MAR</b>	Queenz: The Show with Balls	<b>MUSIC</b>	<b>15</b>
<b>26 &amp; 27 MAR</b>	Houdini's Greatest Escape	<b>THEATRE</b>	<b>16</b>
<b>28 MAR</b>	Ania Magliano	<b>COMEDY</b>	<b>34</b>
<b>30 MAR</b>	Misters Discos 60s, 70s & 80s Revival	<b>MUSIC</b>	<b>34</b>
<b>30 MAR</b>	King for a Day: The Nat King Cole Story	<b>MUSIC</b>	<b>17</b>
<b>5 APR</b>	Jam Night	<b>YOUNG PEOPLE</b>	<b>35</b>
<b>5 &amp; 6 APR</b>	Salisbury Dance Studios	<b>DANCE</b>	<b>17</b>
<b>6 APR</b>	Fleetwood Bac	<b>MUSIC</b>	<b>35</b>
<b>9 &amp; 10 APR</b>	The Adventures of the Little Red Hen	<b>FAMILY</b>	<b>18 – 19</b>
<b>12 APR</b>	Shape of You: The Music of Ed Sheeran	<b>MUSIC</b>	<b>36</b>
<b>13 APR</b>	Alasdair Beckett-King: Nevermore	<b>COMEDY</b>	<b>36</b>
<b>20 APR</b>	The Signatures Northern Soul Live	<b>MUSIC</b>	<b>37</b>
<b>26 APR</b>	Barnstormers	<b>COMEDY</b>	<b>25</b>
<b>27 APR</b>	Women Who Gave No F*cks	<b>THEATRE</b>	<b>37</b>
<b>25 APR – 18 MAY</b>	A Chorus of Disapproval	<b>THEATRE</b>	<b>20 – 21</b>
<b>3 MAY</b>	Paul Foot: Dissolve	<b>COMEDY</b>	<b>38</b>
<b>4 MAY</b>	Sons of Town Hall	<b>MUSIC</b>	<b>38</b>
<b>10 MAY</b>	All Floyd Division Bell 2024 Tour	<b>MUSIC</b>	<b>39</b>
<b>17 MAY</b>	Jazz Dynamos feat. Lucy Randell	<b>MUSIC</b>	<b>39</b>
<b>18 MAY</b>	Mark Watson	<b>COMEDY</b>	<b>40</b>
<b>1 – 6 JULY</b>	The Mousetrap: 70th Anniversary Tour	<b>THEATRE</b>	<b>22 – 23</b>
<b>25 – 27 JULY</b>	Ghosts and Grimm Tales	<b>THEATRE</b>	<b>40</b>

# WILTSHIRE CREATIVE

JAN – MAY

2024

   **wiltscreative**  
**wiltshirecreative.co.uk**  
**Ticket Sales 01722 320 333**

**Salisbury Arts Centre**  
Bedwin Street, SP1 3UT

**Salisbury Playhouse**  
Malthouse Lane, SP2 7RA